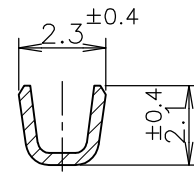
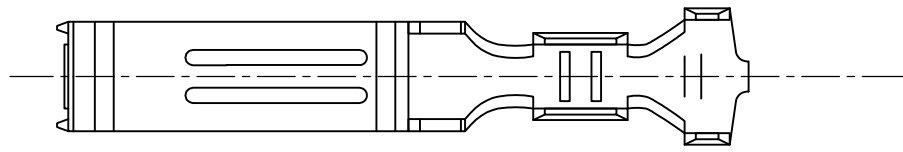
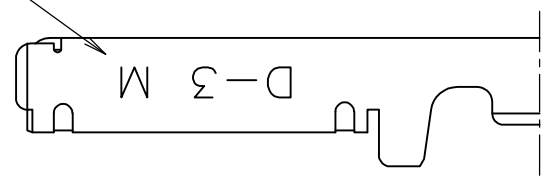


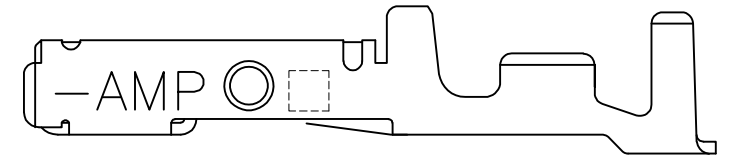
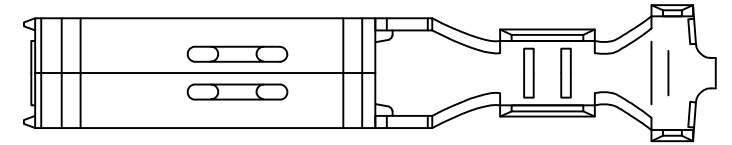
THIS DRAWING IS UNPUBLISHED. RELEASED FOR PUBLICATION JUN ,1990.  
 © COPYRIGHT 1990 By Tyco Electronics Japan G.K. ALL RIGHTS RESERVED.

LOC	DIST	REVISIONS 変更				
P	LTR	DESCRIPTION	DATE	DWN	APVD	
J	/	C	REVISED PER ECR-11-007143	07JUL2011	T.T	T.M

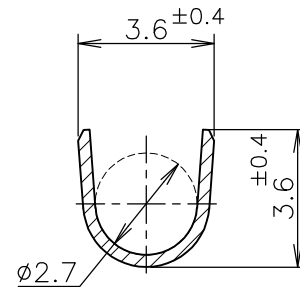
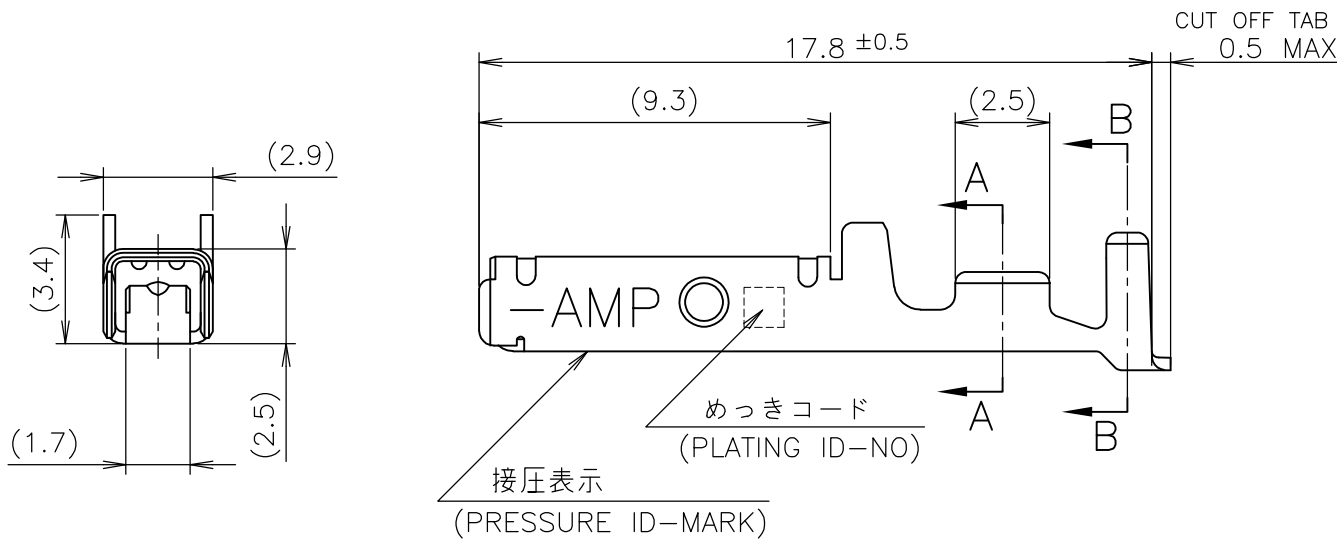
ワイヤーレンジ  
WIRE RANGE  
ID MARK



A-A



2-5 ONLY



B-B

- ① 標準接圧型コンタクト：一般向け及び多極用
- ② 高接圧型コンタクト：高電流用及び強振動用
- ③ 金めっきは接続部のみとする
- 4 製品規格：108-5349
- 5 取付け適用規格：114-5148

- ① CONTACT TYPE; LOW PRESSURE TYPE (FOR GENERAL)
- ② CONTACT TYPE; HIGH PRESSURE TYPE (FOR HIGH CURRENT OR ANTI-VIBRATION)
- ③ GOLD-PL. CONTACT AREA ONLY
- 4 PRODUCT SPEC: 108-5349
- 5 APPLICATION SPEC: 114-5148

OBSOLETE	接圧表示 (ID-MARK) (CONT. TYPE)	めっきコード (PL. ID NO)	仕上 (FINISH)	型番 (P/N)	
					②
			5	光沢錫めっき (BRIGHT TIN-PL.)	1-175217-5
			3	0.76μm 最小金めっき (0.76μm MIN. Au-PL.)	1-175217-3
			2	0.38μm 最小金めっき (0.38μm MIN. Au-PL.)	1-175217-2
	①	INACTIVE	5	光沢錫めっき (BRIGHT TIN-PL.)	175217-5
			3	0.76μm 最小金めっき (0.76μm MIN. Au-PL.)	175217-3
			2	0.38μm 最小金めっき (0.38μm MIN. Au-PL.)	175217-2

GENERAL TOLERANCE 一般公差
10 ≥ : ±0.2
30 ≥ > 10: ±0.25
100 ≥ > 30: ±0.3
ANGLES: ±3°

DIMENSIONS: 単位: 耗 mm		TOLERANCES UNLESS OTHERWISE SPECIFIED: 一般公差	
0 PLC	±	1 PLC	±
1 PLC	±	2 PLC	±
2 PLC	±	3 PLC	±
3 PLC	±	4 PLC	±
4 PLC	±	ANGLES	±

MATERIAL  
材料  
(COPPER ALLOY)  
銅合金

FINISH  
仕上  
(SEE TABLE)  
表参照

THIS DRAWING IS A CONTROLLED DOCUMENT.		DWN T-YONEBAYASHI 27JUN1990
DIMENSIONS: 単位: 耗 mm		CHK H.OBATA 14FEB1991
TOLERANCES UNLESS OTHERWISE SPECIFIED: 一般公差		APVD S.MANABE 14FEB1991
MATERIAL 材料 (COPPER ALLOY) 銅合金		PRODUCT SPEC 製品規格
FINISH 仕上 (SEE TABLE) 表参照		APPLICATION SPEC 取付適用規格
WEIGHT		WEIGHT

WIRE RANGE 包合電線断面積 AWG 24-20 (0.2-0.5mmSQ) mm <sup>2</sup>		INSULATION DIA 被覆外径 1.2-2.6 mmφ	
<b>STE</b> TE Connectivity			
M SIZE DYNAMIC SERIES REC. CONTACT L/P ダイナミックシリーズリセプタクルコンタクト L/P			
SIZE	CAGE CODE	DRAWING NO 番号	RESTRICTED TO
A3	00779	C-175217	-
CUSTOMER DRAWING		SCALE 尺度 5:1	SHEET 1 OF 1
		REV C	