

1-175217-5 Product Details

[Share](#) [Print](#) [Email](#)




1-175217-5

TE Internal Number: 1-175217-5

 Active

[View 3D PDF](#)

Dynamic Series Connectors

 Always EU RoHS/ELV Compliant
(Statement of Compliance)

Product Highlights:

- Dynamic Series Product Line
- D-3 Series
- Wire-to-Wire
- Applies To Wire/Cable
- Contact

[View all Features](#)

Quick Links

- ▶ [Pricing & Availability](#)
- ▶ [Search for Tooling](#)
- ▶ [View Housings \(7\)](#)
- ▶ [Product Feature Selector](#)
- ▶ [Contact Us About This Product](#)

[Add to My Part List](#)

[Request Sample](#)

[Find Similar Products](#)

[Buy Product](#)

Documentation & Additional Information

Product Drawings:

- [M SIZE DYNAMIC SERIES REC. CONTACT L/P](#) (PDF, English)

Catalog Pages/Data Sheets:

- None Available

Product Specifications:

- [Dynamic Connector D-3000 Series](#) (PDF, Japanese)
- [Dynamic D-3800 Series With HTS Connector](#) (PDF, Japanese)
- [DYNAMIC D-2600 SERIES HYBRID 48P CONN](#) (PDF, Japanese)

Application Specifications:

- [DYNAMIC Series D-3, Crimp-in Type Contacts](#) (PDF, Japanese)

Instruction Sheets:

- [EXTRACTION TOOL FOR DYNAMIC D-3000 SERIES](#) (PDF, English)
- [STRAIGHT ACTION HAND TOOL 919600-1,919601-1 and 9196...](#) (PDF, Japanese)
- [PEW12 HAND TOOL\(D3000-M\)](#) (PDF, Japanese)

CAD Files: (CAD Format & Compression Information)

- [2D Drawing](#) (DXF, Version B)
- [3D Model](#) (IGES, Version B)
- [3D Model](#) (STEP, Version B)

[List all Documents](#)

Related Products:

- [Tooling](#)
- [Housings \(7\)](#)

Product Features (Please use the Product Drawing for all design activity)

Product Type Features:

- Product Line = Dynamic Series
- Series = D-3
- Product Type = Contact
- Termination Method to Wire/Cable = Crimp
- [Insertion Force](#) = High
- Sealed = No
- Wire/Cable Type = Discrete Wire

Electrical Characteristics:

- Contact - Rated Current (A) = 7.5
- Operating Voltage Reference = AC/DC
- Operating Voltage (VAC) = 600

Industry Standards:

- [RoHS/ELV Compliance](#) = RoHS compliant, ELV compliant
- [Lead Free Solder Processes](#) = Not relevant for lead free process
- [RoHS/ELV Compliance History](#) = Always was RoHS compliant

Identification Marking:

- Wire Range Mark = M

Environmental:

- Operating Temperature (°C [°F]) = -55 - +105 [-67 - +221]

- Operating Voltage (VDC) = 600

Termination Features:

- Wire/Cable Size (mm²) = 0.2 - 0.5
- Wire/Cable Size (AWG) = 20 - 24

Body Features:

- Wire Type = Stranded

Contact Features:

- Contact Type = Socket
- Contact Base Material = Copper Alloy
- Contact Plating, Mating Area, Material = Tin
- Multiple Contact Types = Without

Conditions for Usage:

- Applies To = Wire/Cable
- For Use With = Tab Contact
- Accepts Wire Insulation Diameter, Range (mm [in]) = 1.20 - 2.60 [0.047 - 0.102]

Operation/Application:

- Application Use = Wire-to-Wire
- Contact Transmits (Typical Application) = Power

Packaging Features:

- Packaging Method = Bag
- Packaging Quantity = 1,000

Other:

- Brand = AMP

Corporate Information

- [About TE](#)
- [Investors](#)
- [News Room](#)
- [Supplier Portal](#)
- [Careers](#)
- [Terms & Conditions](#)
- [Privacy Policy](#)

Quick Links

- [Distributor Inventory](#)
- [Product Cross Reference](#)
- [Documents & Drawings](#)
- [Product Compliance Support Center](#)
- [Site Map](#)

Customer Support

- [Email or Chat With Us](#)
- [Find a Phone Number](#)
- [Knowledge Base](#)
- [Manage Your Account](#)

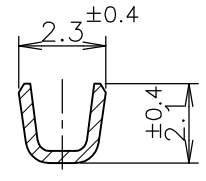
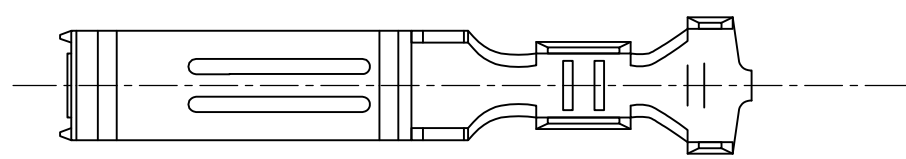
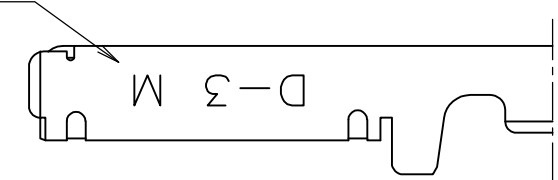
Keep Me Informed



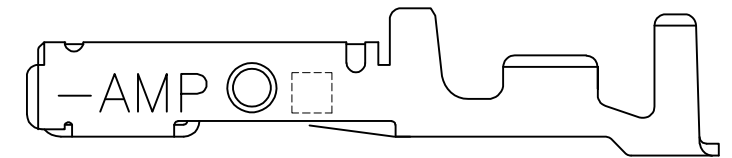
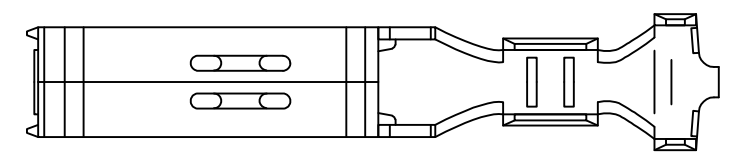
THIS DRAWING IS UNPUBLISHED. RELEASED FOR PUBLICATION JUN ,1990.
 © COPYRIGHT 1990 By Tyco Electronics Japan G.K. ALL RIGHTS RESERVED.

LOC	DIST	REVISIONS 変更					
J	/	P	LTR	DESCRIPTION	DATE	DWN	APVD
			C	REVISED PER ECR-11-007143	07JUL2011	T.T	T.M

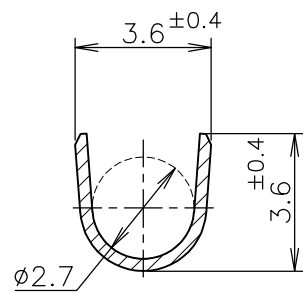
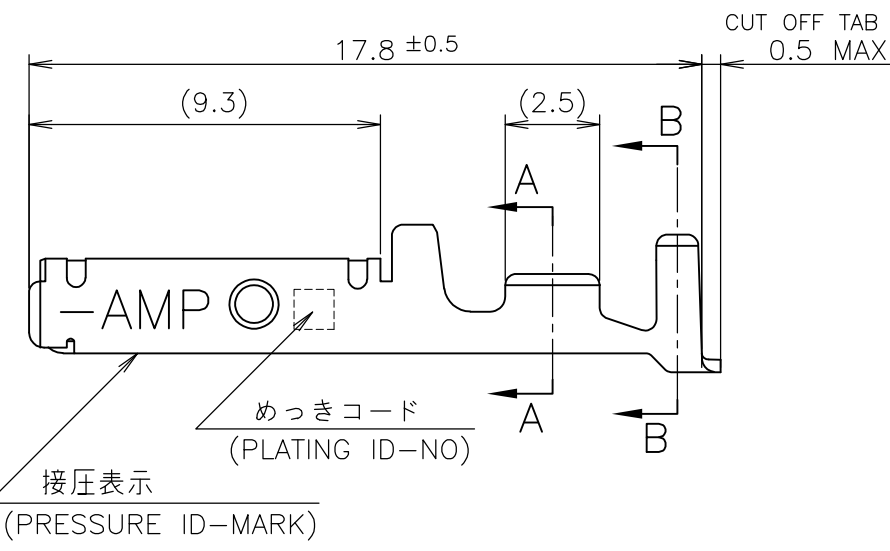
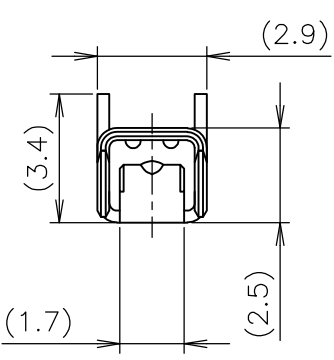
ワイヤーレンジ
WIRE RANGE
ID MARK



A-A



2-5 ONLY



B-B

- ① 標準接圧型コンタクト：一般向け及び多極用
- ② 高接圧型コンタクト：高電流用及び強振動用
- ③ 金めっきは接続部のみとする
- 4 製品規格：108-5349
- 5 取付け適用規格：114-5148

- ① CONTACT TYPE; LOW PRESSURE TYPE (FOR GENERAL)
- ② CONTACT TYPE; HIGH PRESSURE TYPE (FOR HIGH CURRENT OR ANTI-VIBRATION)
- ③ GOLD-PL. CONTACT AREA ONLY
- 4 PRODUCT SPEC: 108-5349
- 5 APPLICATION SPEC: 114-5148

OBSOLETE	H	5	光沢錫めっき (BRIGHT TIN-PL.)	2-175217-5
		5	光沢錫めっき (BRIGHT TIN-PL.)	1-175217-5
		3	0.76μm 最小金めっき (0.76μm MIN. Au-PL.)	1-175217-3
		2	0.38μm 最小金めっき (0.38μm MIN. Au-PL.)	1-175217-2
		2	0.38μm 最小金めっき (0.38μm MIN. Au-PL.)	175217-2
①	INACTIVE	5	光沢錫めっき (BRIGHT TIN-PL.)	175217-5
		3	0.76μm 最小金めっき (0.76μm MIN. Au-PL.)	175217-3
		2	0.38μm 最小金めっき (0.38μm MIN. Au-PL.)	175217-2
備考 (REMARK)	接圧表示 (ID-MARK)	めっきコード (PL. ID NO)	仕上 (FINISH)	型番 (P/N)
	接点タイプ (CONT. TYPE)			

GENERAL TOLERANCE
一般公差

10 ≥ :	±0.2
30 ≥ > 10:	±0.25
100 ≥ > 30:	±0.3
ANGLES:	±3°

THIS DRAWING IS A CONTROLLED DOCUMENT.

DIMENSIONS: 単位: 耗 mm	TOLERANCES UNLESS OTHERWISE SPECIFIED: 一般公差
	0 PLC ± 1 PLC ± 2 PLC ± 3 PLC ± 4 PLC ± ANGLES ±
MATERIAL 材料 (COPPER ALLOY) 銅合金	FINISH 仕上 (SEE TABLE) 表参照

DWN	27JUN1990
T-YONEBAYASHI	
CHK	14FEB1991
H.OBATA	
APVD	14FEB1991
S.MANABE	
PRODUCT SPEC	製品規格
APPLICATION SPEC	取付適用規格
WEIGHT	

WIRE RANGE
包合電線断面積 AWG 24-20
(0.2-0.5mmSQ) mm²

INSULATION DIA
被覆外径 1.2-2.6 mmφ

STE TE Connectivity

M SIZE
DYNAMIC SERIES REC. CONTACT L/P
ダイナミックシリーズリセプタクルコンタクト L/P

SIZE A3 CAGE CODE 00779 DRAWING NO. C-175217 RESTRICTED TO

CUSTOMER DRAWING SCALE 5:1 SHEET 1 OF 1 REV C