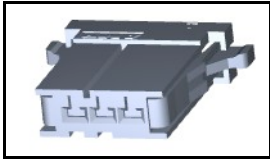


1-178288-3 Product Details

[Share](#) [Print](#) [Email](#)




1-178288-3

TE Internal Number: 1-178288-3

 Active

[View 3D PDF](#)

Dynamic Series Connectors

 Always EU RoHS/ELV Compliant
(Statement of Compliance)

Product Highlights:

- Dynamic Series Product Line
- D-3100S Series
- Series No. = 3000
- Wire-to-Board, Wire-to-Wire
- Applies To Printed Circuit Board, Applies To Wire/Cable

[View all Features](#)

Quick Links

- ▶ [Pricing & Availability](#)
- ▶ [Search for Tooling](#)
- ▶ [View Contacts \(40\)](#)
- ▶ [Product Feature Selector](#)
- ▶ [Contact Us About This Product](#)

[Add to My Part List](#)

[Request Sample](#)

[Find Similar Products](#)

[Buy Product](#)

Documentation & Additional Information

Product Drawings:

- [REC HSG FOR DYNAMIC,SINGLE ROW D-3100](#) (PDF, English)

Catalog Pages/Data Sheets:

- [D3000 Series Dynamic Connectors](#) (PDF, English)

Product Specifications:

- [Dynamic Connector D-3000 Series](#) (PDF, Japanese)

Application Specifications:

- None Available

Instruction Sheets:

- None Available

CAD Files: (CAD Format & Compression Information)

- [2D Drawing](#) (DXF, Version S)
- [3D Model](#) (IGES, Version S)
- [3D Model](#) (STEP, Version S)

[List all Documents](#)

Related Products:

- [Tooling](#)
- [Contacts \(40\)](#)

Product Features (Please use the Product Drawing for all design activity)

Product Type Features:

- Product Line = Dynamic Series
- Product Type = Connector
- Connector Type = Housing
- [PCB Mount Retention](#) = Without
- CSA File Number = LR7189

Mechanical Attachment:

- Mating Retention Type = Latching
- Panel Mount Retention = Without

Electrical Characteristics:

- Operating Voltage Reference = AC/DC
- Operating Voltage (VAC) = 250
- Operating Voltage (VDC) = 250

Body Features:

- Mating Retention = With

Industry Standards:

- [RoHS/ELV Compliance](#) = RoHS compliant, ELV compliant
- [Lead Free Solder Processes](#) = Not relevant for lead free process
- RoHS/ELV Compliance History = Always was RoHS compliant
- Agency/Standard = CSA, UL
- UL Rating = Recognized
- UL File Number = E28476
- CSA Rating = Certified
- UL Flammability Rating = UL 94V-0

Identification Marking:

- [Keying](#) = X
- Circuit Identification Feature = Without

Environmental:

Contact Features:

- Contact Type = Socket
- Contact Layout = Single Row
- Multiple Contact Types = Without

Housing Features:

- Connector Style = Receptacle
- Centerline (mm [in]) = 3.81 [0.1499]
- Housing Material = Polyester - GF
- Housing Color = Black
- Mating Alignment = With
- Mating Alignment Type = Keyed

Configuration Features:

- Number of Positions = 3
- Number of Rows = 1
- Strain Relief = Without

- Operating Temperature (°C [°F]) = -55 – +105 [-67 – +221]

Conditions for Usage:

- Applies To = Printed Circuit Board, Wire/Cable
- For Use With = Plug Housing & Header

Operation/Application:

- Application Use = Wire-to-Board, Wire-to-Wire

Packaging Features:

- Packaging Method = Bag
- Packaging Quantity = 250

Other:

- Series = D-3100S
- Series No. = 3000
- Brand = AMP

Corporate Information

[About TE](#)
[Investors](#)
[News Room](#)
[Supplier Portal](#)
[Careers](#)
[Terms & Conditions](#)
[Privacy Policy](#)
[AODA Accessibility Policy](#)
[AODA Multi-Year Accessibility Plan](#)

Quick Links

[Distributor Inventory](#)
[Product Cross Reference](#)
[Documents & Drawings](#)
[Product Compliance Support Center](#)
[Site Map](#)

Customer Support

[Email or Chat With Us](#)
[Find a Phone Number](#)
[Knowledge Base](#)
[Manage Your Account](#)

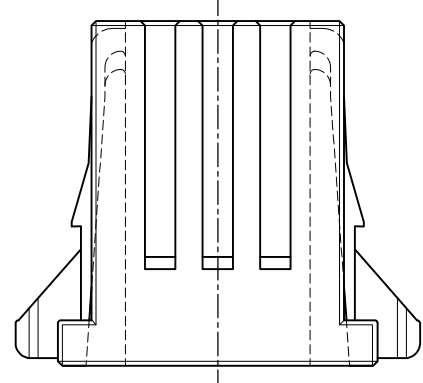
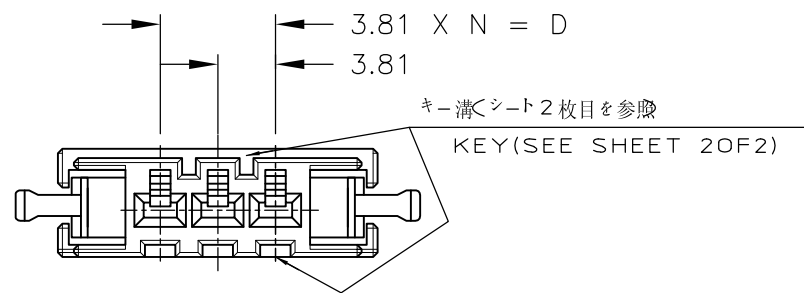
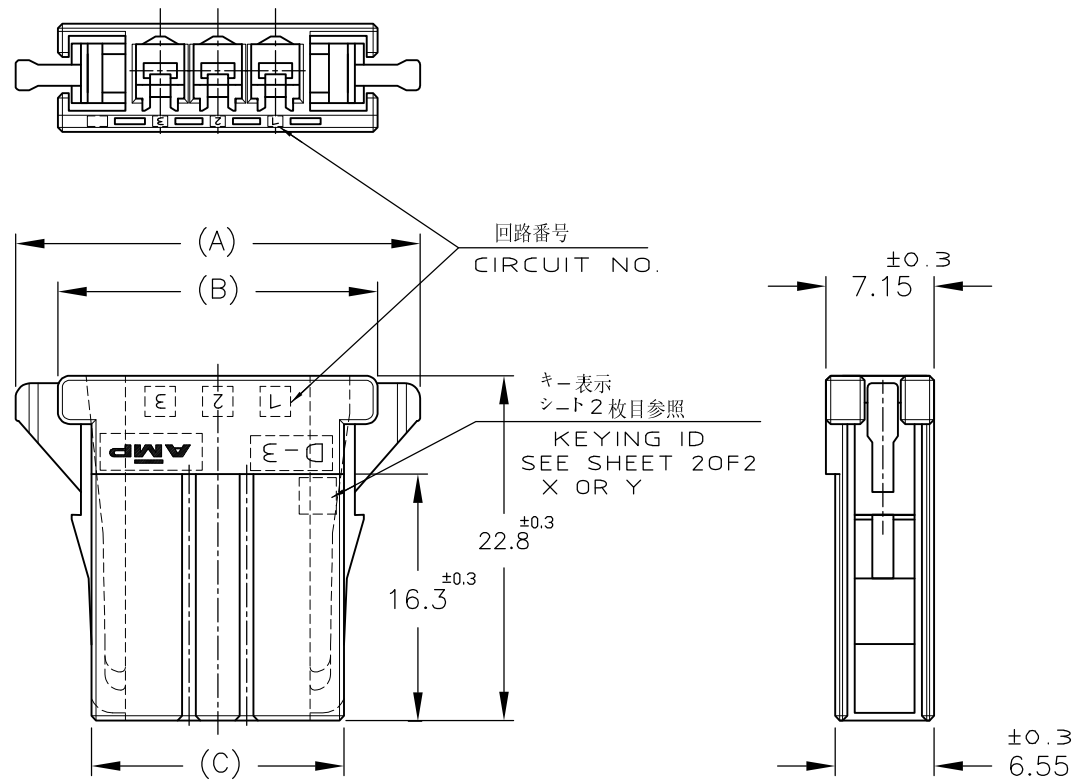
Keep Me Informed

NUMBER 178288



METRIC

PRINT DIST 単位 概 DIMENSIONS IN MM. DO NOT SCALE PRINT



NOTE

1 MATERIAL: GLASS FIELD THERMO PLASTIC, POLYESTER
 COLOR: BLACK
~~△ TO COAT ALL SURFACE OF HOUSING WITH TEFLON~~

注記

1 材料: ガラス入り熱可塑性ポリエステル樹脂
 色: 黒色
~~△ ハウジング全面にテフロン塗装のこと~~

	10 POS.	53.43	47.83	43.37	34.29	9	2-178288-8
	10 POS.	53.43	47.83	43.37	34.29	9	1-178288-8
	8 POS.	45.81	40.12	35.97	26.67	7	1-178288-7
	6 POS.	38.19	32.59	28.13	19.05	5	2-178288-6
	6 POS.	38.19	32.59	28.13	19.05	5	1-178288-6
	5 POS.	34.38	28.78	24.32	15.24	4	1-178288-5
	4 POS.	30.57	24.97	20.51	11.43	3	2-178288-4
	4 POS.	30.57	24.97	20.51	11.43	3	1-178288-4
OBSOLETE	△ 3 POS.	26.76	21.16	16.7	7.62	2	6-178288-3
OBSOLETE	△ 3 POS.	26.76	21.16	16.7	7.62	2	5-178288-3
	3 POS.	26.76	21.16	16.7	7.62	2	2-178288-3
	3 POS.	26.76	21.16	16.7	7.62	2	1-178288-3
FINISH	POS. / DIMENSION	A	B	C	D	N	PART NUMBER

				STE TE Connectivity					
				REC HSG FOR DYNAMIC, SINGLE ROW ダイナミック 3100リセハウジング					
				名稱 (NAME)					
				材料 (MATERIAL) SEE NOTE 注記参照					
				仕上 (FINISH)					
				一般公差 (GENERAL TOLERANCE)					
				10以下: ±0.2 10以上 30以下: ±0.25 30以上 100以下: ±0.3 角度: ±3°					
				SIZE A3		LOC J		番号 (No.) C-178288	
				尺度 (SCALE) 2-1		REV. E4		SHEET 1 OF 2	
E4	REVISED PER ECO-11-005030	RK	HMR	21MAR11	DR. N. Matsubara	9 JUL 91	DE. N. Matsubara	9 JUL 91	
LTR	変更 (REVISION RECORD)	DR	CHK	DATE	CHK. H. Obata	17 JUL 91	APP. S. MANABE	17-DEC-'91	

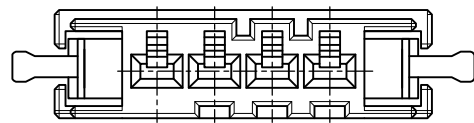
NUMBER
178288



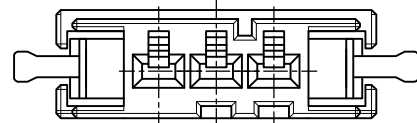
METRIC

PRINT DIST
単位 耗 DIMENSIONS IN MM. DO NOT SCALE PRINT

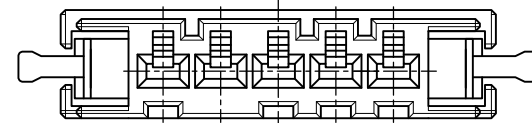
KEYING LOCATION



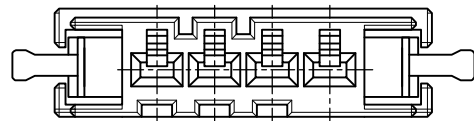
(P/N 2-178288-4 ONLY)
(KEYING: Y)



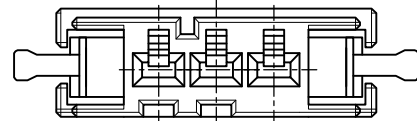
(P/N 2-178288-3 ONLY)
(KEYING: Y)



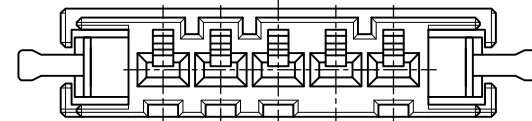
(P/N 2-178288-6,-8)
(KEYING: Y)



(P/N 1-178288-4 ONLY)
(KEYING: X)



(P/N 1-178288-3 ONLY)
(KEYING: X)



(P/N 1-178288-5,-6,-7,-8)
(KEYING: X)

					STE TE Connectivity	
					抱合電線断面(WIRE RANGE)	
					被覆外径(INSULATION DIA.)	
					名称(NAME)	
					REC HSG FOR DYNAMIC, SINGLE ROW	
					ダイナミック-3100リセハウジング	
					材料(MATERIAL)	
					仕上(FINISH)	
					一般公差 (GENERAL TOLERANCE)	
					10以下 : ±0.2	
					10を超え 30以下 : ±0.25	
					30を超え 100以下 : ±0.3	
					角度 : ±3°	
SEE 1 OF 2					SIZE A3	
					LOC J	
					番号(No.) 178288	
LTR 変更 (REVISION RECORD)					尺度(SCALE) 2-1	
DR CHK DATE					REV. E4	
CHK. SEE 1 OF 2 APP.					SHEET 2 OF 2	

(CUSTOMER DRAWING) 顧客用図面