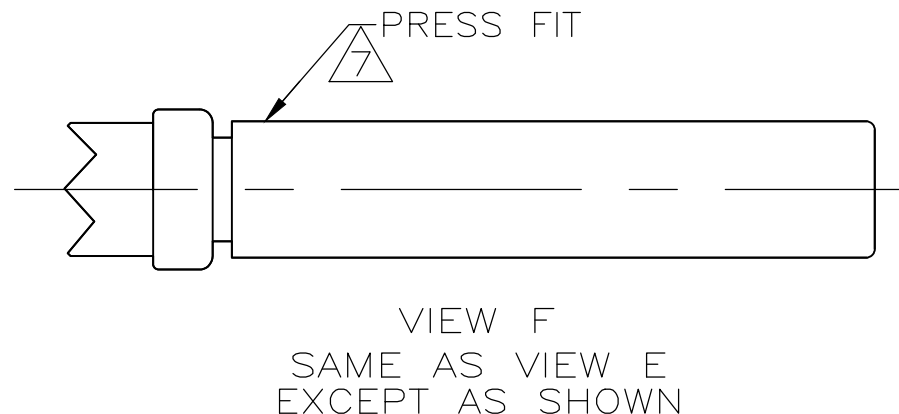
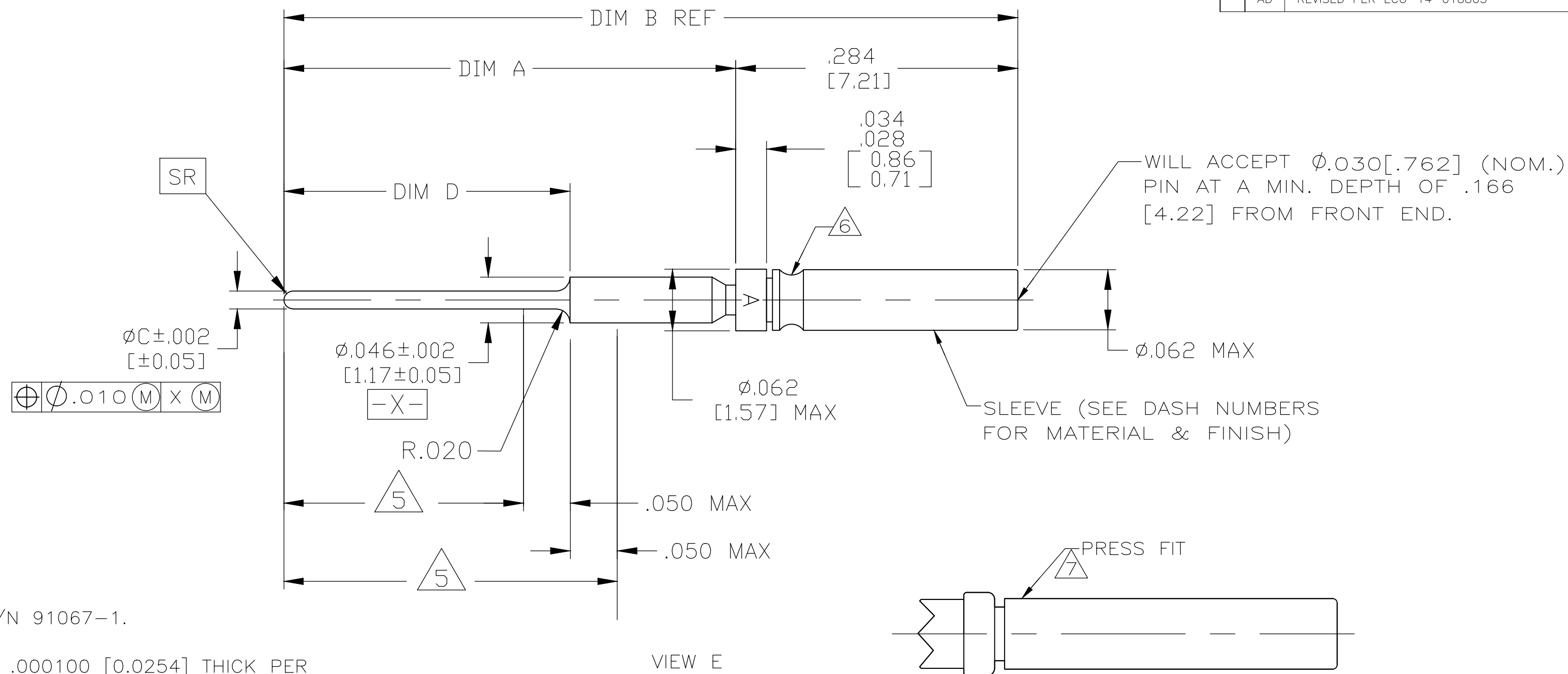


THIS DRAWING IS UNPUBLISHED. RELEASED FOR PUBLICATION
 © COPYRIGHT - By - ALL RIGHTS RESERVED.

LOC		DIST		REVISIONS			
P	LTR	DESCRIPTION		DATE	DWN	APVD	
AD		REVISED PER ECO-14-018805		10JAN15	MGM	CT	



- 1. INSERTION/EXTRACTION TOOL AMP P/N 91067-1.
- 2. CONTACT BODY AND HOOD FINISH:
GOLD PLATED .000050 [0.0127] TO .000100 [0.0254] THICK PER ASTM-B-488, TYPE I, CODE C OVER COPPER PLATE
.000100 [0.0254] TO .000250 [0.0635] THICK PER SAE-AMS 2418-1.
- 3. CONTACT BODY FINISH:
GOLD PLATED .000050 [0.0127] TO .000100 [0.0254] THICK PER ASTM-B-488, TYPE I, CODE C OVER COPPER PLATE
.000100 [0.0254] TO .000250 [0.0635] THICK PER SAE-AMS 2418-1.
HOOD FINISH:
PASSIVATED PER ASTM-A-380
- 4. CONTACT BODY FINISH:
GOLD PLATED .000050 [0.0127] TO .000100 [0.0254] THICK PER ASTM-B-488, TYPE I, CODE C OVER NICKEL PLATE
.000050 [0.0127] TO .000150 INCH THICK PER QQ-N-290,
- 5. THIS AREA IS SOLDER DIPPED. 207684-8 & 1-207684-0 ONLY.
- 6. SLEEVE MAY BE CRIMPED OR DIMPLED ONTO CONTACT BODY.
- 7. SLEEVE MAY BE PRESS FIT, CRIMPED OR DIMPLED ONTO CONTACT BODY.
- 8. CONTACTS MEET ALL APPLICABLE PERFORMANCE REQUIREMENTS OF SAE-AS39029.
- 9. CONTACT BODY MATERIAL:
LEADED NICKEL COPPER OR COPPER ALLOY PER ASTM-B-197
HOOD MATERIAL:
BRASS PER ASTM-B-36 OR COPPER ALLOY PER ASTM-B-197
- 10. CONTACT BODY MATERIAL:
LEADED NICKEL COPPER OR COPPER ALLOY PER ASTM-B-197
HOOD MATERIAL:
STAINLESS STEEL PER ASTM-A-240
- 11. CONTACT BODY MATERIAL:
BERYLLIUM COPPER PER ASTM-B-197 OR ASTM-B-196.
HOOD MATERIAL:
STAINLESS STEEL, UNS S30500 IAW ASTM A240/A240M OR AMS5514.
HOOD FINISH:
PASSIVATED IAW AMS2700, METHOD 1, TYPE OPTIONAL, CLASS 4.
- 12. PRELIMINARY NOT RELEASED FOR PRODUCTION

CALLOUT	VIEW	FINISH	MATERIAL	DIM D ± .010	ØC	DIM B	DIM A	PART NO
6	VIEW E	2	9	.268[6.8]	.018[0.46]	.719[18.26]	.435[11.05]	1-207684-2
5, 6	VIEW E	2	9	.393[9.98]	.018[0.46]	.844[21.44]	.560[14.22]	1-207684-0
6	VIEW E	2	9	.498[12.64]	.020[0.51]	.949 [24.10]	.665 [16.89]	207684-9
5, 6	VIEW E	2	9	.293[7.44]	.018[0.46]	.744[18.90]	.460[11.68]	207684-8
7	VIEW F	3	10	.393[9.98]	.025[0.64]	.844[21.44]	.560[14.22]	207684-7
7	VIEW F	4	11	.643[16.33]	.018[0.46]	1.094[27.79]	.810[20.57]	207684-6
7	VIEW F	4	11	.393[9.98]	.018[0.46]	.844[21.44]	.560[14.22]	207684-5
7	VIEW F	4	10	.393[9.98]	.025[0.64]	.844[21.44]	.560[14.22]	207684-4
6	VIEW E	2	9	.293[7.44]	.018[0.46]	.744[18.90]	.460[11.68]	207684-3
6	VIEW E	2	9	.643[16.33]	.018[0.46]	1.094[27.79]	.810[20.57]	207684-2
6	VIEW E	2	9	.393[9.98]	.018[0.46]	.844[21.44]	.560[14.22]	207684-1
REMARKS	SEE VIEW	FINISH	MATERIAL	DIM D ± .010	ØC	DIM B	DIM A	PART NO

THIS DRAWING IS A CONTROLLED DOCUMENT.

DWN T. ALEXANDER 11-15-91	 TE Connectivity
CHK F. KINSEY 11-18-91	
APVD F. KINSEY 11-18-91	
NAME F. KINSEY	
DIMENSIONS: INCHES [mm]	TOLERANCES UNLESS OTHERWISE SPECIFIED:
0 PLC ± -	1 PLC ± -
2 PLC ± -	3 PLC ± .005 [0.13]
4 PLC ± -	ANGLES ± -
MATERIAL SEE CALLOUT	FINISH SEE CALLOUT
WEIGHT -	CUSTOMER DRAWING
SIZE A2	CAGE CODE 00779
DRAWING NO C-207684	RESTRICTED TO -
SCALE 10:1	SHEET 1 OF 1
REV AD	

Mouser Electronics

Authorized Distributor

Click to View Pricing, Inventory, Delivery & Lifecycle Information:

[TE Connectivity:](#)

[1-207684-0](#)