

Quick Reference Guide Modular Jacks — Single Port PCB Mount

TE Connectivity's comprehensive single port modular jack product portfolio has been designed to meet the diverse design requirements of the data communications market. The product portfolio, which includes both right-angle jacks and vertical jacks, specifically suits applications that require performance in voice, data, and high-speed networking.

Available in a variety of styles and configurations, TE's single port modular jacks offer compact size, and meet FCC rules and regulations part 68 as supported by Telecommunications Industry Association (TIA-1096-A).

PRODUCT APPLICATIONS

- Communications
 - Telephones
 - Routers
 - Servers
 - Switches
- Computers
- Business equipment
- Consumer electronics

FEATURES AND BENEFITS

- Standardization for network connections
- Ease of use
- Broad portfolio
- RoHS compliant

Basic Information

PERFORMANCE CATEGORY	
Category	Applications
Cat 3	10 BASE-T
Cat 5	10/100 BASE-T
Cat 5e	10/100/1000 BASE-T or Gigabit Ethernet
Cat 6a	10 Gigabit Ethernet

RJ Designation

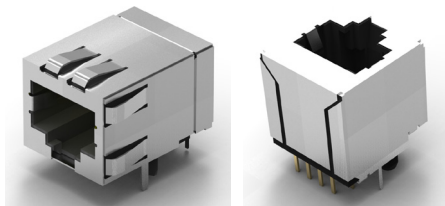
Modular jacks are commonly misrepresented by the Registered Jack (RJ) designations shown below. TE Connectivity modular jacks should be selected by position size and number of contacts loaded.

RJ DESIGNATION	
RJ Designation	Position/Contacts Loaded
RJ11	6/2
RJ14	6/4
RJ22	4/4
RJ25	6/6
RJ45	8/8

Product Features

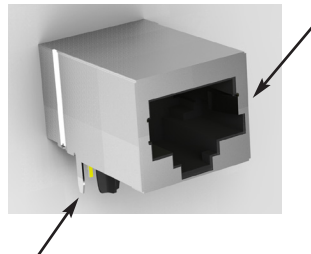
Shielded

A metal shell that provides EMI/RFI protection. EMI* RFI is unwanted electromagnetic energy (or "noise") in the frequency range that is generally used in radio communication.



Keyed

Designed for the use with a keyed plug to ensure proper mating and will also accept a standard plug

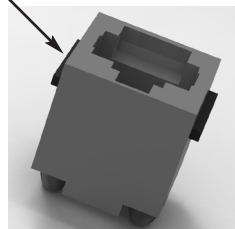


Mounting pegs

Provide location and retention support during soldering processes, but do not function as boardlocks. The majority of modular jacks have some type of mounting peg.

Panel Stops

Provides additional mechanical support, especially with top entry jacks.

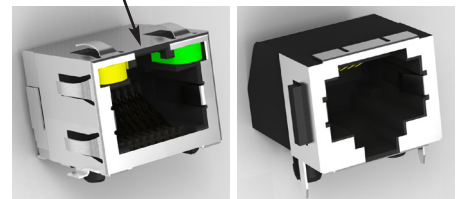


Inverted

Contacts are on the bottom and the latch is on the top to allow for alternate location of latch.

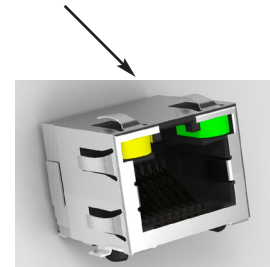
Inverted Latch
Tab Up

Standard Latch
Tab Down



LEDs

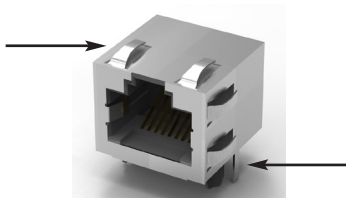
Integrated into the modular jack, eliminating the need for additional system space for indicators. Available in multiple colors and configurations.



Grounding Options

Panel Ground — Makes contact with the panel for ground connections

PCB Ground — Makes contact with the PCB for ground connections

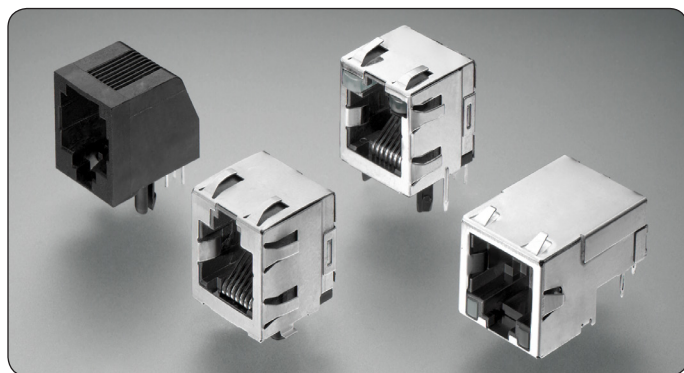


***Terminology Key**

EMI — Electro Magnetic Interference

RFI — Radio Frequency Interference

Right Angle Jacks



TE Connectivity's extensive product offering provides a broad selection of right angle modular jacks.

Features

- CAT 3, CAT 5, CAT 5e performance ratings
- Low-profile, through-hole, or SMT
- With and without shielding
- With and without LEDs
- Grounding and panel features

4 POSITIONS/ 4 CONTACTS

Part Number	Height (mm)	Mount Style	Shielded	Ground Option	Panel Stops	LEDs	Tail Length (mm)	Designed For..	Other Features	Inverted
215875-1	11.5	T/H	No	No	No	No	3.1	Cat 3		No
5555980-1	16.2	T/H	No	No	No	No	3.81	Cat 3		No
5520249-2	16.2	T/H	No	No	Yes	No	3.81	Cat 3		No
5520241-2	17.4	T/H	No	No	No	No	3.43	Cat 3	Flanged	No

6 POSITIONS/ 4 CONTACTS

Part Number	Height (mm)	Mount Style	Shielded	Ground Option	Panel Stops	LEDs	Tail Length (mm)	Designed For..	Other Features	Inverted
5520250-2	16.2	T/H	No	No	Yes	No	3.81	Cat 3		No
5555979-1	16.2	T/H	No	No	No	No	3.81	Cat 3		No
215876-2	11.5	T/H	No	No	No	No	3.2	Cat 3		No
5555163-2	12.7	T/H	No	No	Yes	No	3.81	Cat 3		No
5555165-2	12.7	T/H	No	No	No	No	3.81	Cat 3		No
5555140-2	12.7	T/H	Yes	Panel & PCB	Yes	No	3.81	Cat 3		No
5555154-2	12.7	T/H	Yes	PCB	Yes	No	3.81	Cat 3		No
5406545-1	12.4	SMT	No	No	Yes	No	N/A	Cat 3		Yes

6 POSITIONS/ 6 CONTACTS

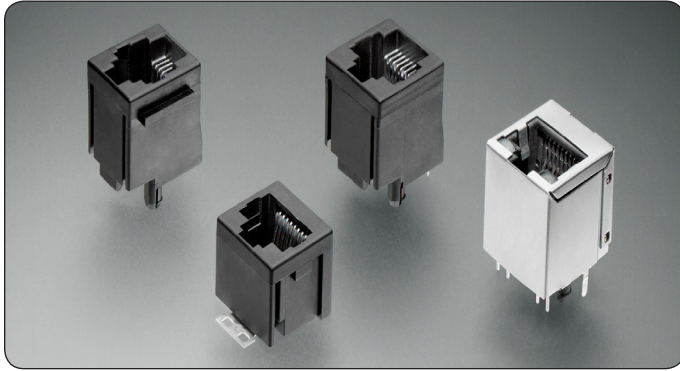
Part Number	Height (mm)	Mount Style	Shielded	Ground Option	Panel Stops	LEDs	Tail Length (mm)	Designed For..	Other Features	Inverted
215876-1	11.5	T/H	No	No	No	No	3.2	Cat 3		No
5555163-1	12.7	T/H	No	No	Yes	No	3.81	Cat 3		No
5555165-1	12.7	T/H	No	No	No	No	3.81	Cat 3		No
5520250-3	16.2	T/H	No	No	Yes	No	3.81	Cat 3		No
5555003-1	16.13	T/H	No	No	Yes	No	3.81	Cat 3	Offset Latch	No
5520470-3	16.13	T/H	No	No	No	No	3.81	Cat 3		No
5555154-1	12.7	T/H	Yes	PCB	Yes	No	3.81	Cat 3		No
5555140-1	12.7	T/H	Yes	Panel & PCB	Yes	No	3.81	Cat 3		No
5406514-1	12.4	SMT	No	No	Yes	No	N/A	Cat 3		Yes
5555077-1	12.7	SMT	No	No	Yes	No	N/A	Cat 3		No

Right Angle Jacks (Continued)

8 POSITIONS/ 8 CONTACTS										
Part Number	Height (mm)	Mount Style	Shielded	Ground Option	Panel Stops	LEDs	Tail Length (mm)	Designed For..	Other Features	Inverted
215877-1	11.5	T/H	No	No	No	No	3	Cat 3		No
5555162-1	12.7	T/H	No	No	Yes	No	3.81	Cat 3		No
5555164-1	12.7	T/H	No	No	No	No	3.81	Cat 3		No
5555166-1	12.7	T/H	No	No	Yes	No	3.81	Cat 3	Keyed	No
5555167-1	12.7	T/H	No	No	No	No	3.81	Cat 3	Keyed	No
5520251-4	16.13	T/H	No	No	Yes	No	3.81	Cat 3		No
5520252-4	16.2	T/H	No	No	Yes	No	3.81	Cat 3	Keyed	No
5520426-4	16.2	T/H	No	No	No	No	3.81	Cat 3		No
5554517-1	16.2	T/H	No	No	No	No	3.81	Cat 3	Keyed	No
2-5338556-1	12.1	T/H	Yes	Panel & PCB	No	No	3.1	Cat 3	Staggered side panels	No
3-5338556-1	12.1	T/H	Yes	Panel & PCB	No	No	3.1	Cat 3	No Side Panels	No
5555141-1	12.7	T/H	Yes	Panel & PCB	No	No	3.81	Cat 3		No
5555153-1	12.7	T/H	Yes	PCB	Yes	No	3.81	Cat 3		No
5556591-1	12.7	T/H	Yes	PCB	No	No	3.81	Cat 3	Keyed	No
5406216-1	13.72	T/H	Yes	Panel & PCB	No	No	3.56	Cat 3		No
5557786-1	13.64	T/H	Yes	PCB	No	No	3.56	Cat 3		No
5557789-1	13.64	T/H	Yes	PCB	No	No	3.56	Cat 3	Shorting Feature	No
5406298-1	13.72	T/H	Yes	Panel & PCB	No	No	3.56	Cat 3		No
5569564-1	13.64	T/H	Yes	Panel & PCB	No	G/Y	2.79	Cat 3		No
5406533-1	12.83	T/H	No	No	No	G/Y	2.54	Cat 5		Yes
5558341-1	13.39	T/H	No	No	No	No	3.56	Cat 5e	Non-traditional CAT 5 Pinout	No
5558343-1	13.39	T/H	No	No	Yes	No	3.56	Cat 5e	Non-traditional CAT 5 Pinout	No
1-406525-1	12.83	T/H	No	No	No	No	2.54	Cat 5		Yes
1116503-2	9.58	T/H	Yes	PCB	No	No	3.48	Cat 5		No
1116062-2	9.58	T/H	Yes	Panel & PCB	No	No	3.48	Cat 5	Bezel Grounds	No
1888542-2	9.58	T/H	Yes	Panel & PCB	No	No	3.48	Cat 5		No
1-406541-1	13.34	T/H	Yes	Panel & PCB	No	No	2.54	Cat 5		Yes
1-406541-5	13.34	T/H	Yes	PCB	No	No	2.54	Cat 5		Yes
6364288-1	13.34	T/H	Yes	Panel & PCB	No	No	2.6	Cat 5		Yes
5558344-1	13.64	T/H	Yes	Panel & PCB	No	No	3.56	Cat 5e	Non-traditional CAT 5 Pinout	No
6116526-1	13.64	T/H	Yes	PCB	No	No	3.56	Cat 5	RJ11 blocking feature	No
5406299-1	13.72	T/H	Yes	Panel & PCB	No	No	3.56	Cat 5e		No
5558342-1	13.64	T/H	Yes	PCB	No	No	3.56	Cat 5e		No
1888566-1	13.34	T/H	Yes	Panel & PCB	No	Y/G-Y/G	3.18	Cat 5		Yes
2-406549-1	13.34	T/H	Yes	Panel & PCB	No	G/Y	2.54	Cat 5		Yes
5406721-2	12.4	SMT	No	No	Yes	No	N/A	Cat 3		Yes
5555078-1	12.7	SMT	No	No	Yes	No	N/A	Cat 3	Keyed	No
5555764-1	12.7	SMT	No	No	No	No	N/A	Cat 3		No
6339191-1	13.34	SMT	Yes	Panel & PCB	No	G/Y	N/A	Cat 5		Yes
5558178-1	12.7	SMT	Yes	PCB	Yes	No	N/A	Cat 3		No
6339160-1	13.34	SMT	Yes	Panel & PCB	No	No	N/A	Cat 5		Yes
1888250-2	7.38	Press Fit	Yes	Panel & PCB	No	G/Y-G/Y	1.74	Cat 5	ATCA/AMC Module compliant	No
1888250-3	7.38	Press Fit	Yes	Panel & PCB	No	No	1.74	Cat 5	ATCA/AMC Module compliant	No

10 POSITIONS/ 10 CONTACTS										
Part Number	Height (mm)	Mount Style	Shielded	Ground Option	Panel Stops	LEDs	Tail Length (mm)	Designed For..	Other Features	Inverted
5558065-1	13.39	T/H	No	No	No	No	3.56	Cat 3		No
5558066-1	13.34	T/H	No	No	No	No	3.56	Cat 3	Keyed	No
5558067-1	13.64	T/H	Yes	PCB	No	No	3.56	Cat 3		No
5558070-1	13.64	T/H	Yes	Panel & PCB	No	No	3.56	Cat 3		No

Vertical Jacks



TE Connectivity's extensive product offering provides a broad selection of vertical modular jacks for your jack application needs.

Features

- CAT 3, CAT 5 performance ratings
- Low-profile, through-hole, or SMT
- With and without shielding
- With and without LEDs
- Grounding and panel features

4 POSITIONS/ 4 CONTACTS

Part Number	Height (mm)	Mount Style	Shielded	Ground Option	Panel Stops	LEDs	Tail Length (mm)	Designed For..	Other Features	Inverted	PCB Mount Angle
216444-1	12	T/H	No	No	No	No	2.79	Cat 3	W/ Solder Stop	N/A	Bottom Entry
216562-1	16.4	T/H	No	No	Yes	No	3.1	Cat 3		N/A	Top Entry
5558872-1	16.51	T/H	No	No	No	No	3.81	Cat 3		N/A	Top Entry
5520257-2	16.51	T/H	No	No	Yes	No	3.43	Cat 3		N/A	Top Entry
1-338084-3	12.7	SMT	No	No	No	No	N/A	Cat 3		No	Top Entry
2-338084-5	12.7	SMT	No	No	No	No	N/A	Cat 3		No	Bottom Entry

6 POSITIONS/ 2 CONTACTS

Part Number	Height (mm)	Mount Style	Shielded	Ground Option	Panel Stops	LEDs	Tail Length (mm)	Designed For..	Other Features	Inverted	PCB Mount Angle
5406010-2	16.51	T/H	No	No	No	No	3.81	Cat 3	RJ-11T Bridged	N/A	Top Entry
5569984-2	16.51	T/H	No	No	No	No	3.81	Cat 3		N/A	Top Entry

6 POSITIONS/ 4 CONTACTS

Part Number	Height (mm)	Mount Style	Shielded	Ground Option	Panel Stops	LEDs	Tail Length (mm)	Designed For..	Other Features	Inverted	PCB Mount Angle
5520258-2	16.51	T/H	No	No	Yes	No	3.81	Cat 3		N/A	Top Entry
5520425-2	16.51	T/H	No	No	No	No	3.81	Cat 3		N/A	Top Entry
1-338086-4	12.7	SMT	No	No	No	No	N/A	Cat 3		N/A	Top/ Bottom Entry

6 POSITIONS/ 6 CONTACTS

Part Number	Height (mm)	Mount Style	Shielded	Ground Option	Panel Stops	LEDs	Tail Length (mm)	Designed For..	Other Features	Inverted	PCB Mount Angle
216446-1	12	T/H	No	No	No	No	2.79	Cat 3	W/ Solder Stop	N/A	Bottom Entry
5520258-3	16.51	T/H	No	No	Yes	No	3.81	Cat 3		N/A	Top Entry
5554990-1	16.51	T/H	No	No	Yes	No	3.81	Cat 3	Offset Latch	N/A	Top Entry
5520425-3	16.51	T/H	No	No	No	No	3.81	Cat 3		N/A	Top Entry
1-338086-6	12.7	SMT	No	No	No	No	N/A	Cat 3		N/A	Top/ Bottom Entry

8 POSITIONS/ 8 CONTACTS

Part Number	Height (mm)	Mount Style	Shielded	Ground Option	Panel Stops	LEDs	Tail Length (mm)	Designed For..	Other Features	Inverted	PCB Mount Angle
216550-1	16.4	T/H	No	No	Yes	No	3.1	Cat 3		N/A	Top Entry
5520259-4	16.51	T/H	No	No	Yes	No	3.81	Cat 3		N/A	Top Entry
5520260-4	16.51	T/H	No	No	Yes	No	3.81	Cat 3	Keyed	N/A	Top Entry
5555799-1	16.51	T/H	No	No	No	No	3.81	Cat 3	Keyed	N/A	Top Entry
5556416-1	16.51	T/H	No	No	No	No	3.81	Cat 3		N/A	Top Entry
5569284-1	16.51	T/H	No	No	No	No	3.43	Cat 3		N/A	Top Entry
5557969-1	16.64	T/H	Yes	Panel & PCB	Yes	No	3.43	Cat 3		N/A	Top Entry
5557484-1	16.64	T/H	Yes	Panel & PCB	Yes	No	3.9	Cat 3	Low Panel Stop	N/A	Top Entry
100616-1	16.71	T/H	Yes	PCB	Yes	No	3.1	Cat 3		N/A	Top Entry
5557730-1	16.77	T/H	Yes	Panel & PCB	Yes	No	3.43	Cat 3	Keyed	N/A	Top Entry
1734577-1	16.51	T/H	Yes	PCB	No	G/Y	3.25	Cat 3		N/A	Top Entry
5558397-1	16.38	T/H	No	No	No	No	3.56	Cat 5	Non-traditional CAT 5 Pinout	N/A	Top Entry
6368150-1	16.82	T/H	Yes	PCB	No	No	3.99	Cat 5		N/A	Top Entry
6116202-1	16.82	Press Fit	Yes	PCB	No	No	3.99	Cat 5	Compliant Pin	N/A	Top Entry
6116418-1	16.82	Press Fit	Yes	Panel & PCB	No	No	3.99	Cat 5	Compliant Pin	N/A	Top Entry
1-338088-3	12.7	SMT	No	No	No	No	N/A	Cat 3		N/A	Top/ Bottom Entry

FOR MORE INFORMATION

TE Technical Support Center

USA:	+1 (800) 522-6752
Canada:	+1 (905) 475-6222
Latin/S. America:	+54 (0) 11-4733-2200
Mexico	+52 (0) 55-1106-0800
Germany:	+49 (0) 6251-133-1999
UK:	+44 (0) 800-267666
France:	+33 (0) 1-3420-8686
Netherlands:	+31 (0) 73-6246-999
China:	+86 (0) 400-820-6015

Part numbers in this brochure are RoHS Compliant*, unless marked otherwise.

*as defined www.te.com/leadfree

Visit Us On the WEB!

For your modular jack needs go to:

www.te.com/products/stdmodjacks

Sample Kits!

Sample kits are available for various Modular Jacks. Contact your local TE Sales Representative for more information or visit www.te.com

te.com

© 2012 Tyco Electronics Corporation, a TE Connectivity Ltd. company. All Rights Reserved.

1-1773464-9 CIS LUG PDF 4/2012

TE Connectivity and the TE connectivity (logo) are trademarks. Other logos, product and company names mentioned herein may be trademarks of their respective owners.

While TE has made every reasonable effort to ensure the accuracy of the information in this brochure, TE does not guarantee that it is error-free, nor does TE make any other representation, warranty or guarantee that the information is accurate, correct, reliable or current. TE reserves the right to make any adjustments to the information contained herein at any time without notice. TE expressly disclaims all implied warranties regarding the information contained herein, including, but not limited to, any implied warranties of merchantability or fitness for a particular purpose. The dimensions in this catalog are for reference purposes only and are subject to change without notice. Specifications are subject to change without notice. Consult TE for the latest dimensions and design specifications.

