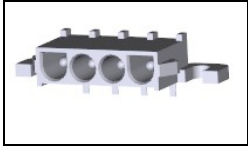


1-350944-0 Product Details

[Share](#) | [Print](#) | [Email](#)


1-350944-0

TE Internal Number: 1-350944-0

Active

[View 3D PDF](#)

.250" Centerline, 600 V, 19 - 36 A max

Always EU RoHS/ELV Compliant (Statement of Compliance)

Product Highlights:

- Universal MATE-N-LOK Product Line
- Wire-to-Board
- Applies To Printed Circuit Board
- Connector
- Header

[View all Features](#)

Quick Links

- ▶ Pricing & Availability
- ▶ Search for Tooling
- ▶ View Mating Products (3)
- ▶ Product Feature Selector
- ▶ Contact Us About This Product

[Add to My Part List](#) | [Request Sample](#) | [Find Similar Products](#) | [Buy Product](#)

Documentation & Additional Information

Product Drawings:

- PIN HEADER ASSEMBLY, RIGHT ANGLE MOUNT, 4 POSITION, U... (PDF, English)

Catalog Pages/Data Sheets:

- SOFT_SHELL_PIN_SOCKET_CONNECTORS_STANDARD_DENSITY (PDF, English)

Product Specifications:

- None Available

Application Specifications:

- Universal MATE-N-LOK Connectors (PDF, English)

Instruction Sheets:

- Universal MATE-N-LOK Connectors (PDF, English)

CAD Files: (CAD Format & Compression Information)

- 2D Drawing (DXF, Version N)
- 3D Model (IGES, Version N)
- 3D Model (STEP, Version N)

[List all Documents](#)

Additional Information:

- Product Line Information

Related Products:

- Tooling
- Mating Products (3)

Product Features (Please use the Product Drawing for all design activity)

Product Type Features:

- Product Line = Universal MATE-N-LOK
- Product Type = Connector
- Connector Type = Header
- PCB Mounting Orientation = Right Angle
- PCB Mount Retention = With
- PCB Mount Alignment = Without
- Sealed = No
- PCB Mount Retention Type = Mounting Hole(s)
- UL File Number = E28476
- CSA File Number = LR 7189

Mechanical Attachment:

- Contact Retention = Without
- Mating Retention Type = Positive Lock
- Panel Mount Retention = Without

Electrical Characteristics:

- Contact - Rated Current (A) = 19
- Operating Voltage Reference = AC
- Operating Voltage (VAC) = 600

Termination Features:

- Termination Method to Wire/Cable = Solder
- Termination Method to PC Board = Through Hole - Solder

Dimensions:

- Tail Length (mm [in]) = 4.06 [0.16]
- PCB Thickness, Recommended (mm [in]) = 1.57 [0.062]

Body Features:

- Mating Retention = With
- Assembly Integration Feature = Without

Contact Features:

- Contact Type = Pin
- Contact Style = Right-Angle
- Contact Layout = In-Line
- Contact Base Material = Phosphor Bronze
- Contact Plating, Mating Area, Material = Tin
- Tail Plating Material = Tin
- Multiple Contact Types = Without

Housing Features:

- Connector Style = Plug
- Centerline (mm [in]) = 6.35 [0.2499]
- Housing Material = Nylon
- Housing Color = White
- UL Flammability Rating = UL 94V-0
- Mating Alignment = With
- Mating Alignment Type = Polarization

Configuration Features:

- Number of Positions = 4
- Number of Rows = 1
- Strain Relief = Without

Industry Standards:

- Agency/Standard = CSA, UL
- RoHS/ELV Compliance = RoHS compliant, ELV compliant
- Lead Free Solder Processes = Wave solder capable to 240°C, Wave solder capable to 260°C, Wave solder capable to 265°C
- RoHS/ELV Compliance History = Always was RoHS compliant
- VDE Tested = Yes
- UL Rating = Recognized
- CSA Rating = Certified

Environmental:

- Operating Temperature (°C [°F]) = -55 - +105 [-67 - +221]

Conditions for Usage:

- Applies To = Printed Circuit Board
- Glow Wire Rating = Standard Part - Not Glow Wire
- For Use With = Universal MATE-N-LOK Plug Housing

Operation/Application:

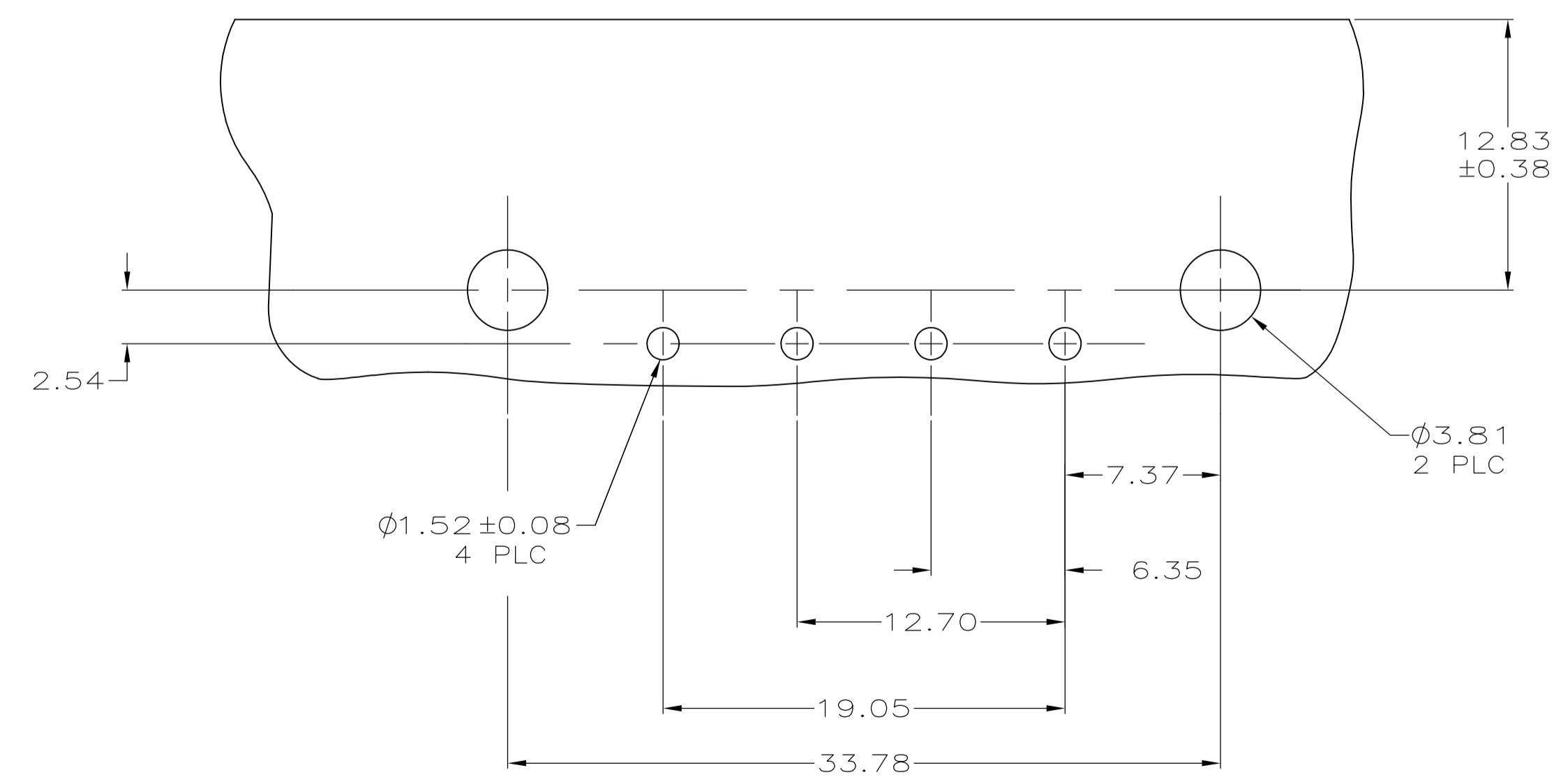
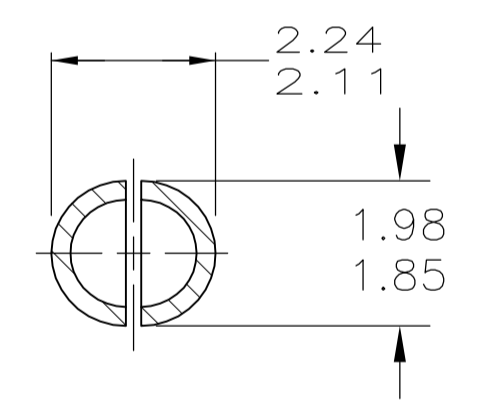
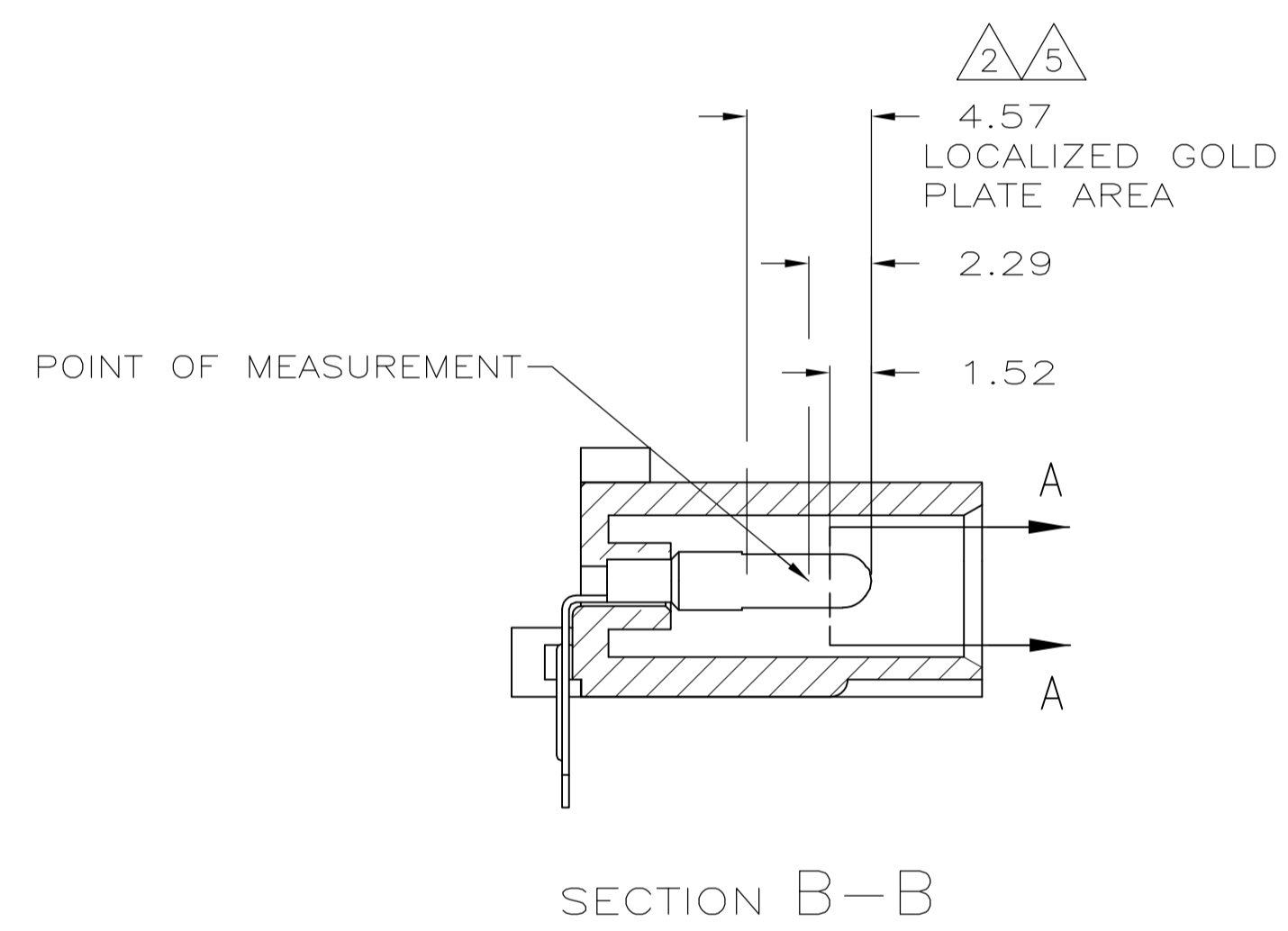
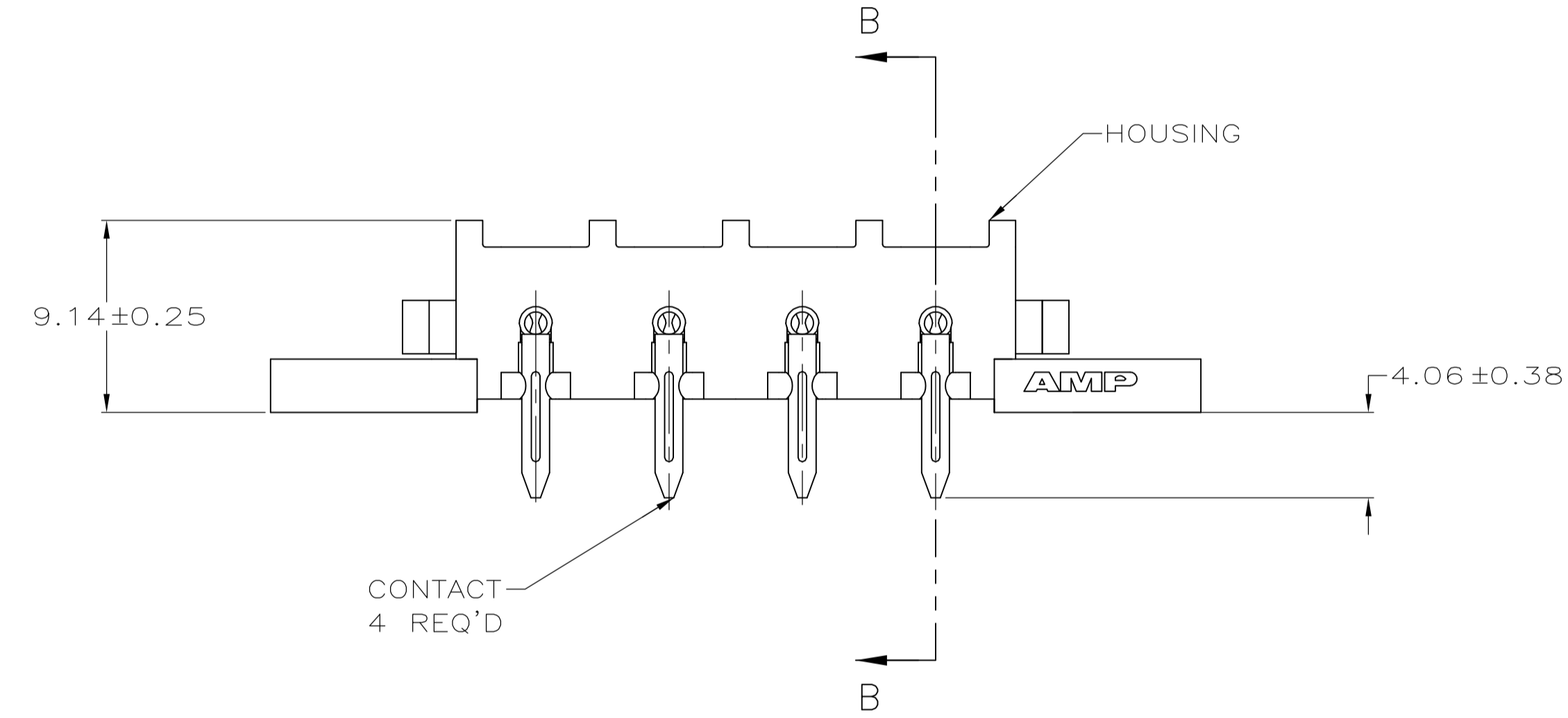
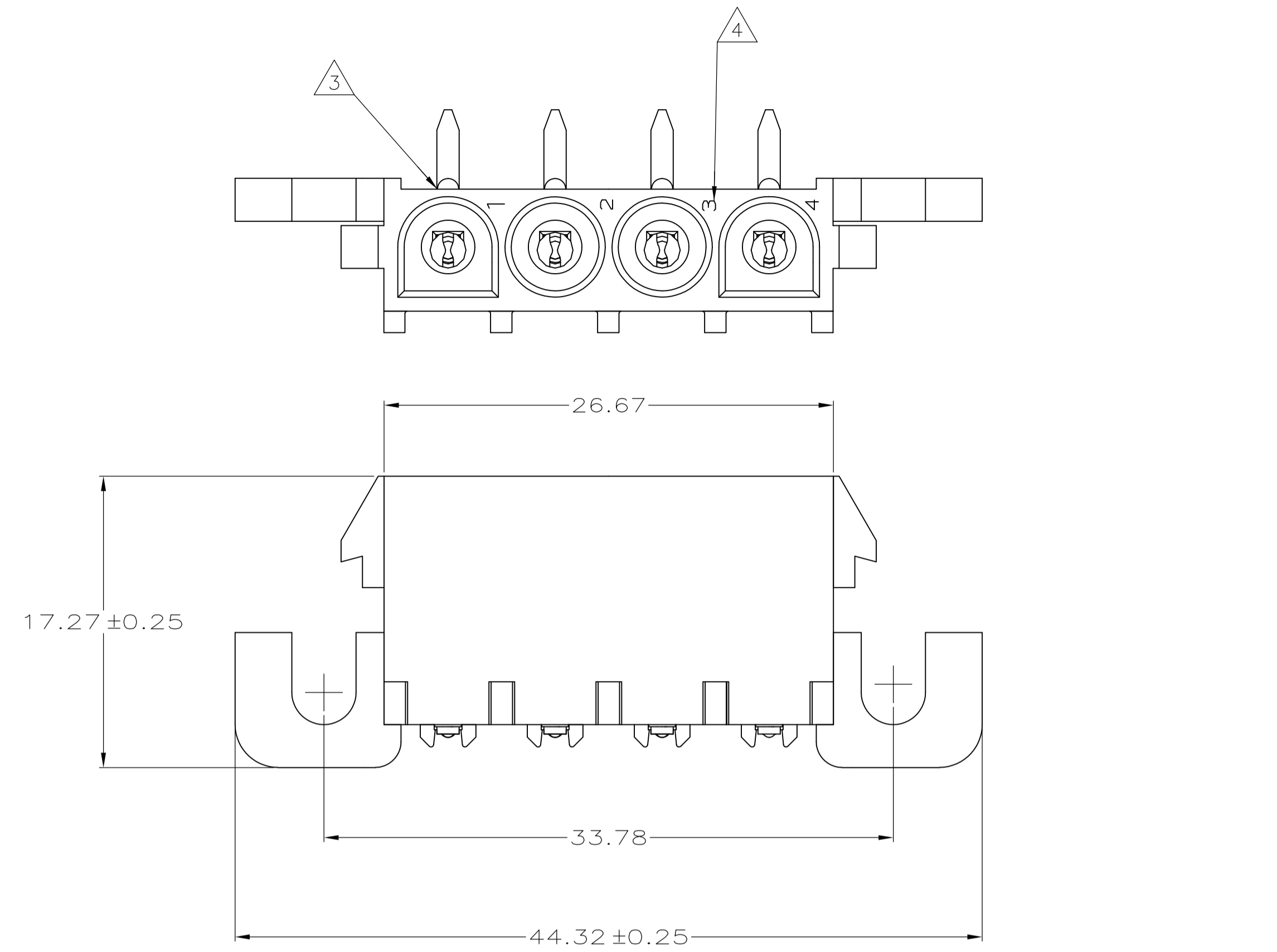
- Application Use = Wire-to-Board

Packaging Features:

- Packaging Method = Box/Carton
- Packaging Quantity = 140

Other:

- Brand = AMP



RECOMMENDED MOUNTING HOLE PATTERN FOR 1.57 THICK P.C. BOARD

- 1 PARTS COMPLY WITH AMP SOLDERABILITY SPECIFICATION 109-11-5.
- 2 CONTACT IS PLATED OVERALL WITH 0.00127 MIN NICKEL, THEN 0.00076 GOLD OVER CONTACT LENGTH INDICATED AND MATTE TIN-LEAD FINISH ON SOLDER TAIL END.
- 3 OPTIONAL CONSTRUCTION MAY DELETE THIS RIB.
- 4 CIRCUIT IDENTIFICATION CHARACTERS ARE ADJACENT TO THE INDICATED CAVITIES, BUT LOCATION AND ORIENTATION MAY BE DIFFER FROM PRINT.
- 5 CONTACT IS PLATED OVERALL WITH 0.00127 MIN NICKEL, THEN 0.00076 GOLD OVER CONTACT LENGTH INDICATED AND MATTE TIN FINISH ON SOLDER TAIL END.
- 6 SUPERSEDED BY 3-350944-0

2.54	.100		
2.29	.090	44.32	1.745
2.24	.088	33.78	1.330
2.11	.083	26.67	1.050
1.98	.078	19.05	.750
1.85	.073	17.27	.680
1.57	.062	12.83	.505
1.52	.060	12.70	.500
0.38	.015	9.14	.360
0.25	.010	7.37	.290
0.13	.005	6.35	.250
0.08	.003	4.57	.180
.00127	.000050	4.06	.160
.00076	.000030	3.81	.150
MM	IN	MM	IN

CONVERSION TABLE

PH BRZ GOLD, 5	NYLON UL 94V-0	3-350944-0
PH BRZ GOLD, 2	NYLON UL 94V-0	2-350944-0
PH BRZ PRE-TIN	NYLON UL 94V-0	1-350944-0
CONTACT	HOUSING	PART NUMBER

THIS DRAWING IS A CONTROLLED DOCUMENT.

DIMENSIONS: mm	TOLERANCES UNLESS OTHERWISE SPECIFIED:	DIN S. CARPENTER 23JUN2003	APVD S. RIDGILL 23JUN2003	NAME
0 PLC ±	1 PLC ±	2 PLC ± 0.13	3 PLC ±	4 PLC ±
ANGLES ±				
MATERIAL SEE TABLE	FINISH SEE TABLE	WEIGHT	SIZE A1	CAGE CODE 00779
CUSTOMER DRAWING		SCALE 4:1	SHEET 1 OF 1	REV N2

STE TE Connectivity

PIN HEADER ASSEMBLY, RIGHT ANGLE MOUNT, 4 POSITION, UNIVERSAL MATE-N-LOK