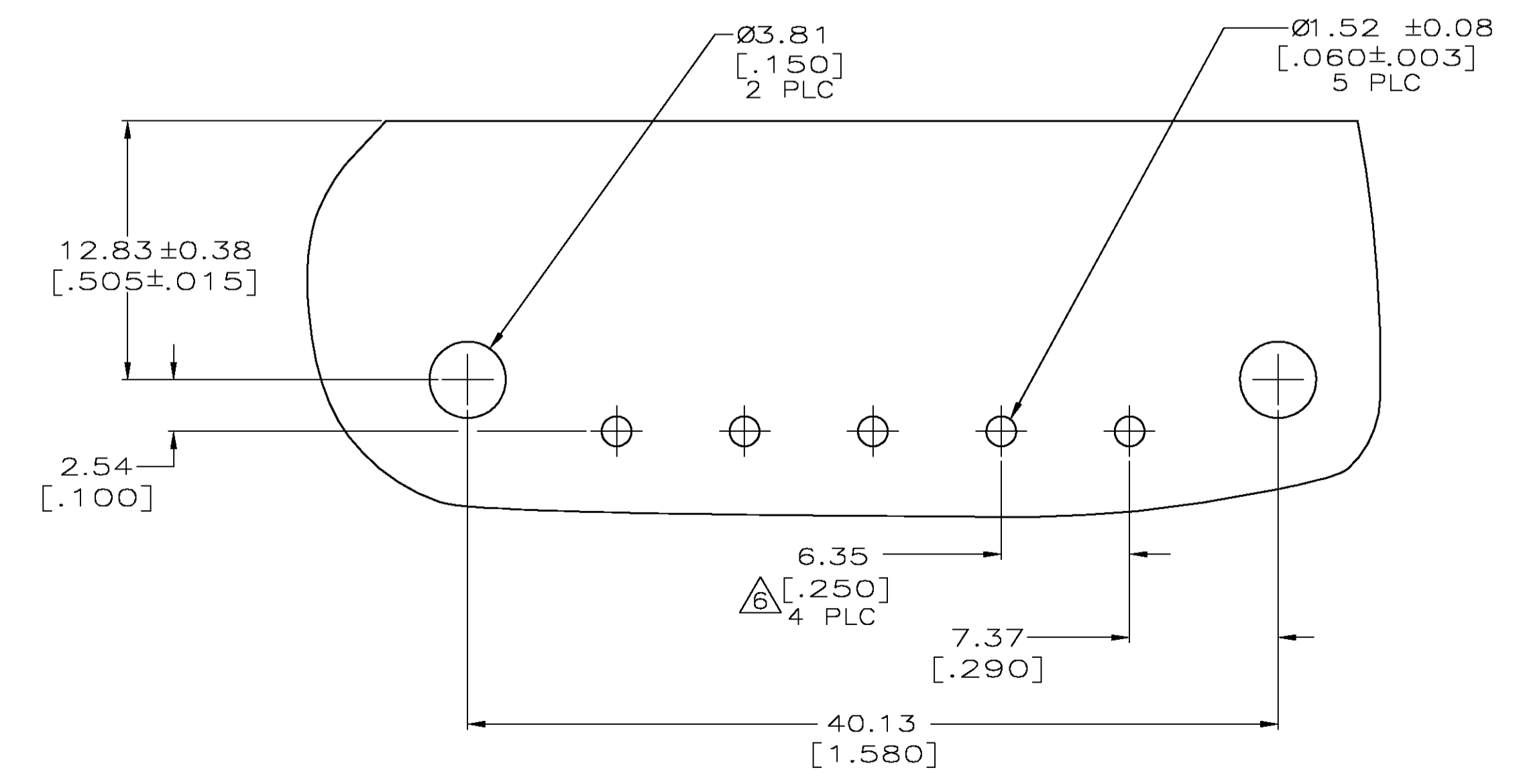
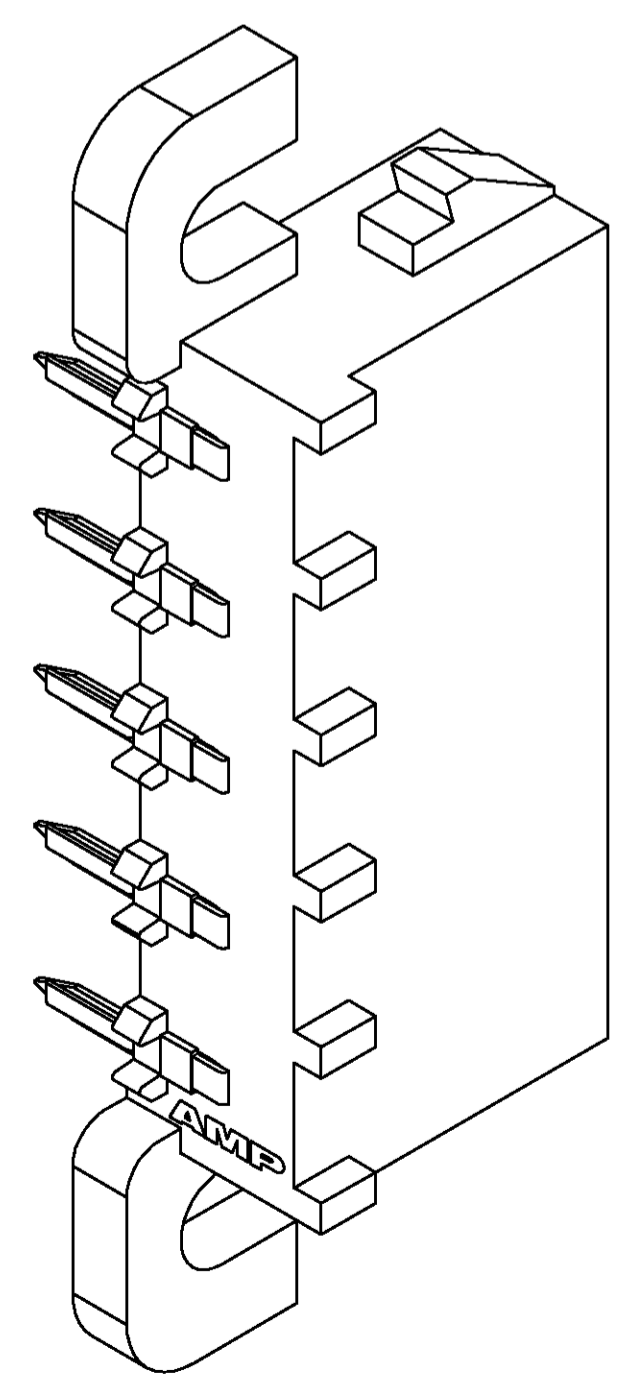
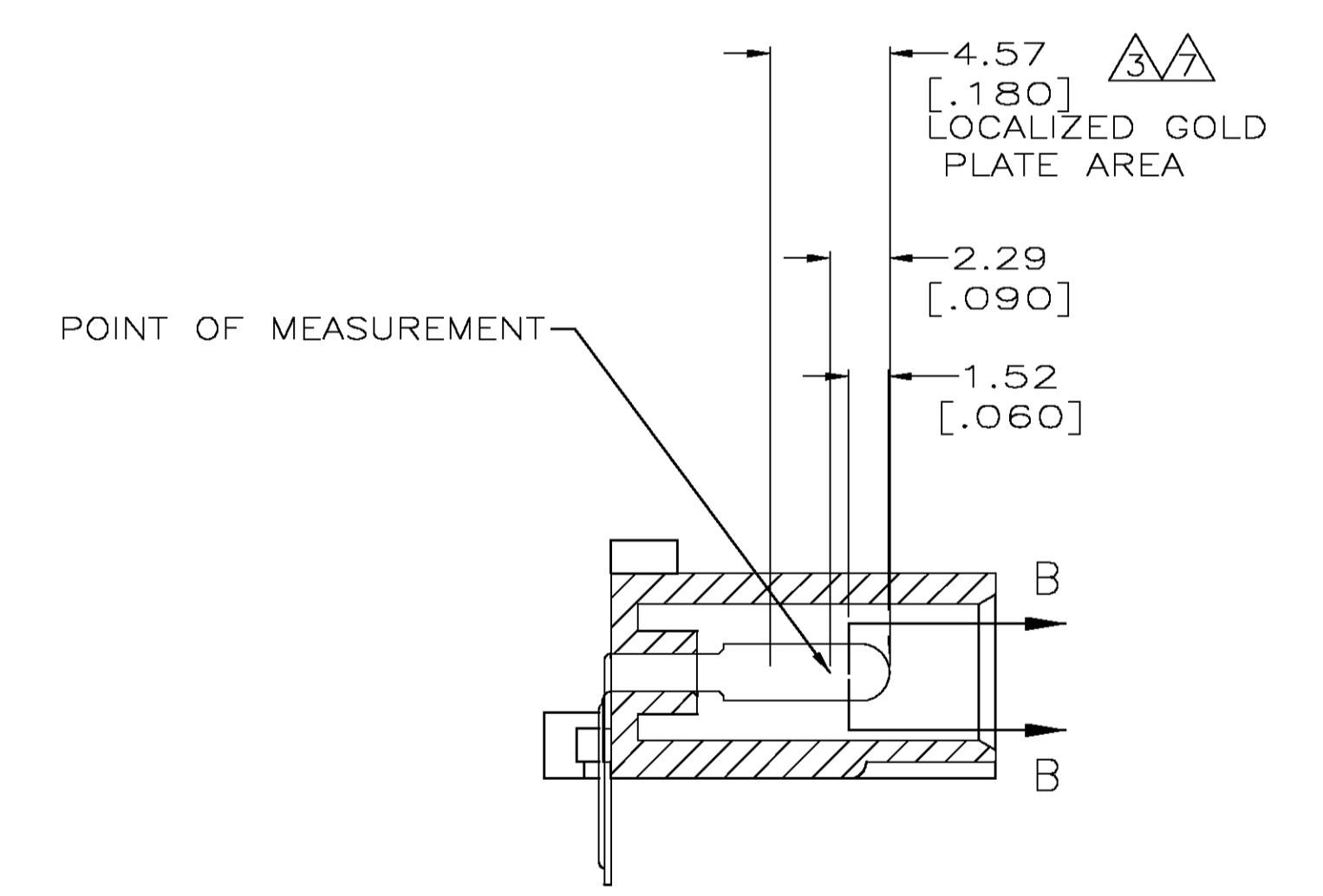
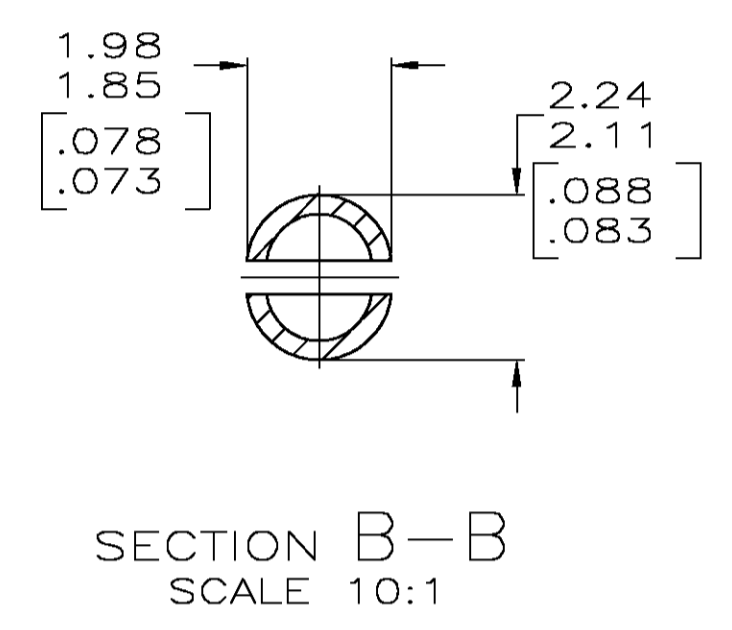
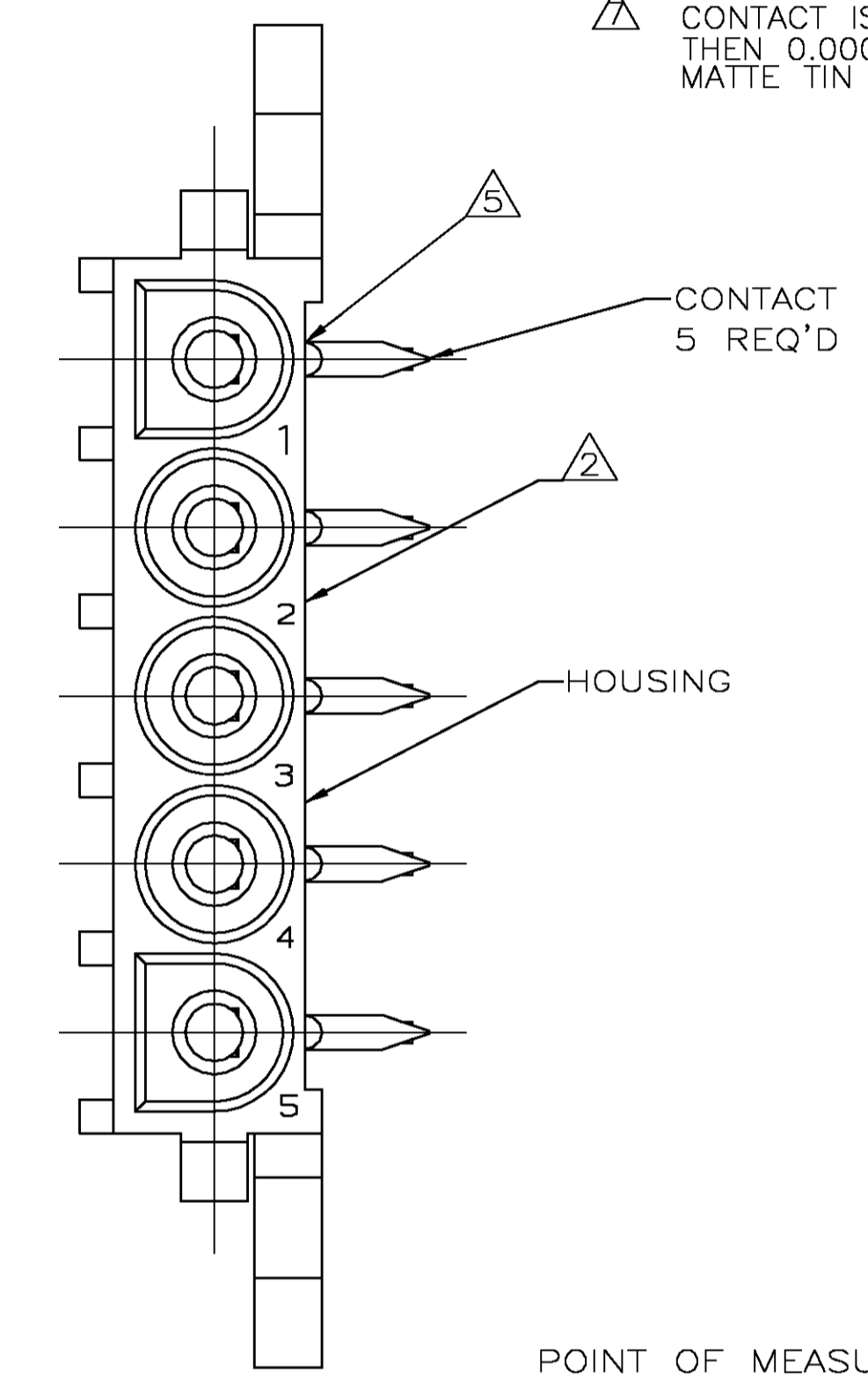
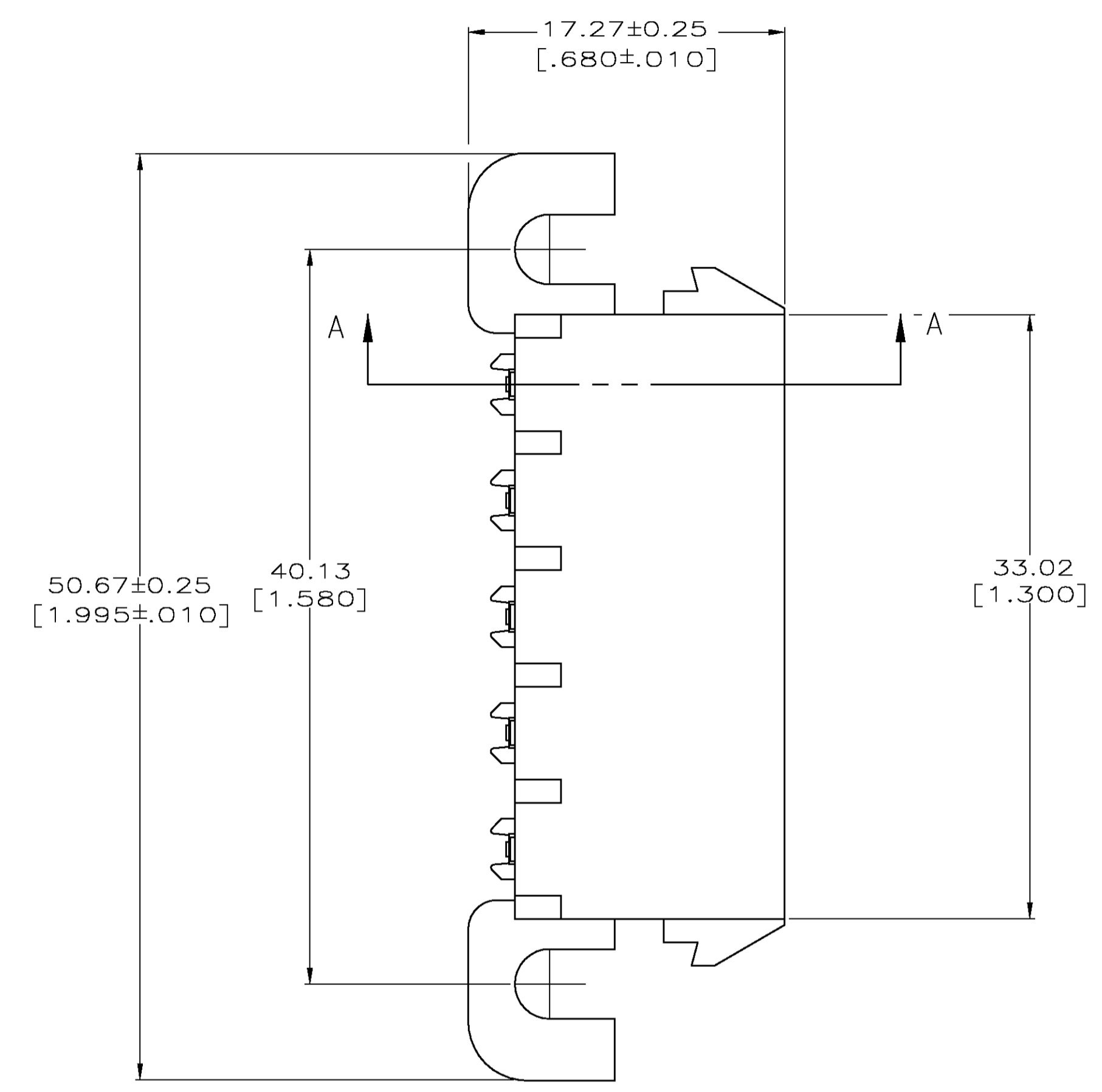
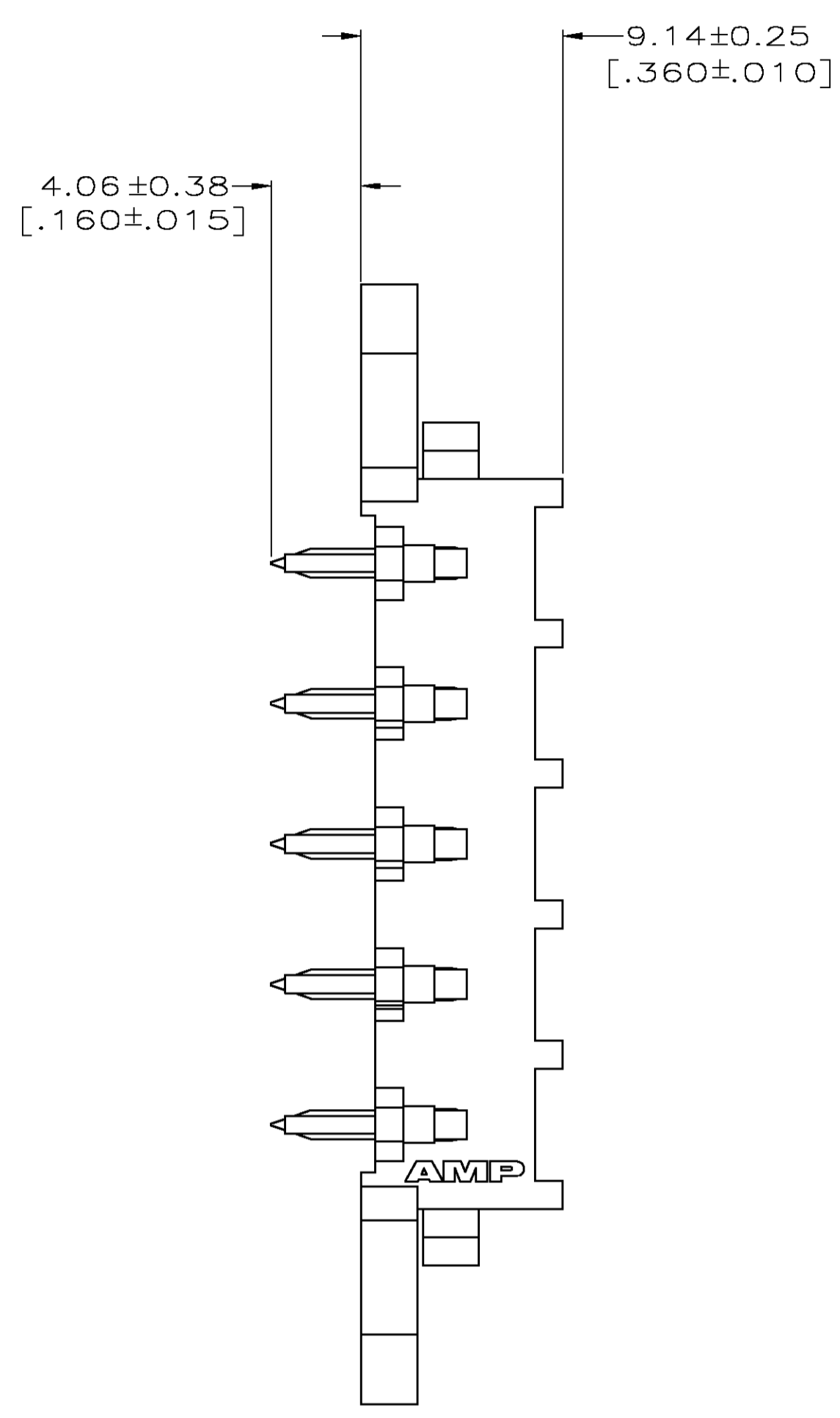


LOC		DIST		REVISIONS			
P	LR	DATE	BY	APPROV	DATE	BY	APPROV
L		21APR05	KW	SR	REVISED PER 063B-1094-04		



- PARTS COMPLY WITH AMP SOLDERABILITY SPECIFICATION 109-11-5.
- CIRCUIT IDENTIFICATION CHARACTERS ARE ADJACENT TO THE INDICATED CAVITIES, BUT LOCATION AND ORIENTATION MAY DIFFER FROM PRINT.
- CONTACT IS PLATED OVERALL WITH 0.00127 [.000050] MIN NICKEL, THEN 0.00076 [.000030] GOLD OVER CONTACT LENGTH INDICATED AND MATTE TIN LEAD FINISH ON SOLDER TAIL END.
- DIMENSIONS IN BRACKETS ARE IN INCHES.
- OPTIONAL CONSTRUCTION MAY DELETE THIS RIB.
- TOLERANCE NON-CUMULATIVE
- CONTACT IS PLATED OVERALL WITH 0.00127 [.000050] MIN NICKEL, THEN 0.00076 [.000030] GOLD OVER CONTACT LENGTH INDICATED AND MATTE TIN FINISH ON SOLDER TAIL END.

CONTACT	HOUSING	PART NO
PH BRZ GOLD	NYLON, UL94V-0	3-350945-0
PH BRZ GOLD	NYLON, UL94V-0	2-350945-0
PH BRZ TIN	NYLON, UL94V-0	1-350945-0

THIS DRAWING IS A CONTROLLED DOCUMENT.

DIMENSIONS: mm [INCHES]	TOLERANCES UNLESS OTHERWISE SPECIFIED:	DWG: K. WHITAKER 21APR2005	DATE: 21APR2005	NAME: S. RIDGILL	TYCO Electronics	TYCO Electronics Corporation
0 PLC ± -	1 PLC ± -	2 PLC ± -	3 PLC ± 0.13 [.005]	4 PLC ± -	5 PLC ± -	ANGLES ± 0.30°
MATERIAL: SEE TABLE	FINISH: SEE TABLE	APPROV: S. RIDGILL 21APR2005	PRODUCT SPEC: ---	APPLICATION SPEC: ---	SIZE: A1	SCALE: 4:1
CUSTOMER DRAWING		WEIGHT: ---	SIZE: 00779	DRAWING NO: 350945	RESTRICTED TO: ---	SHEET 1 OF 1

RECOMMENDED MOUNTING HOLE PATTERN FOR .062 [1.57] THICK P.C. BOARD

