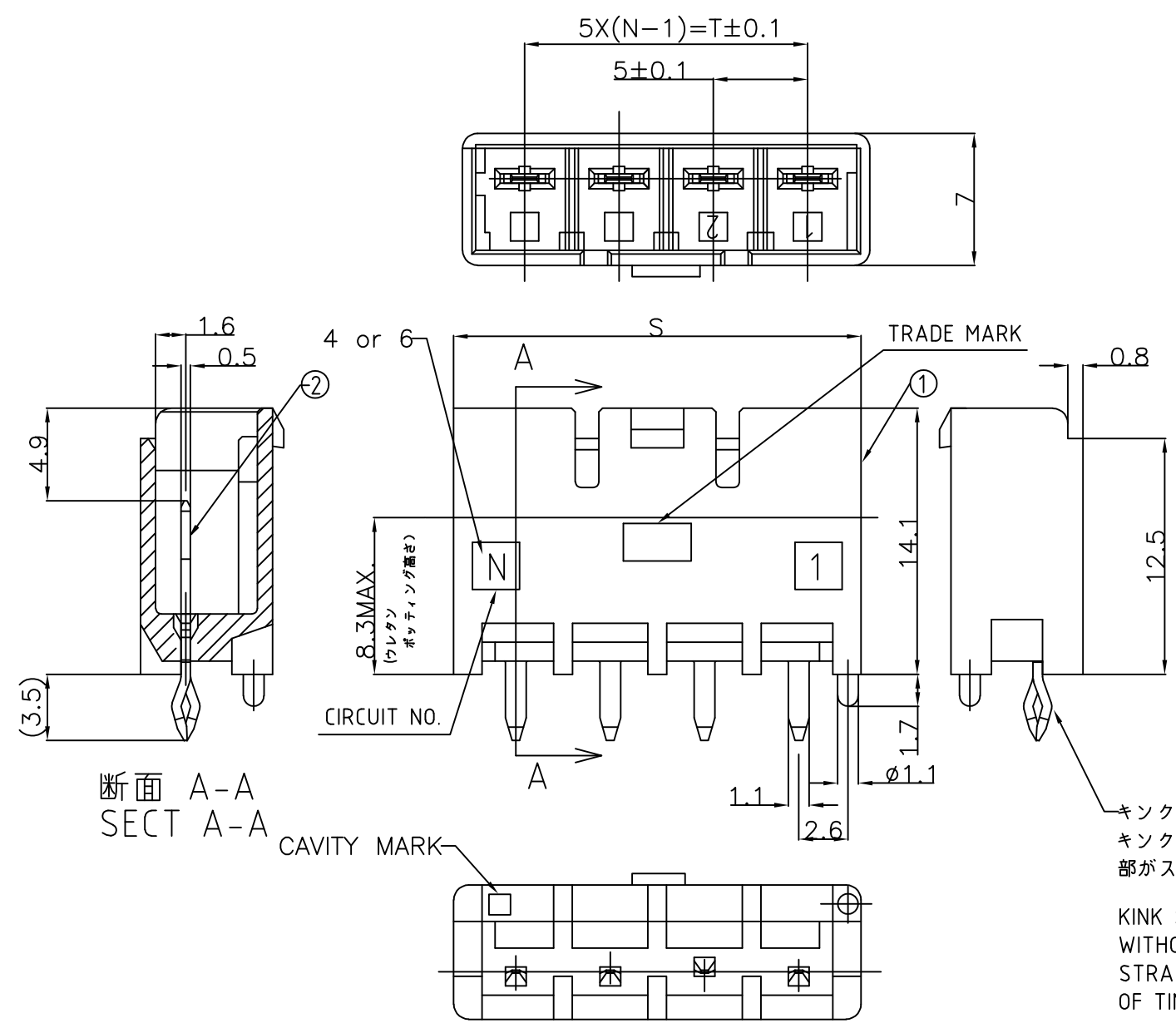
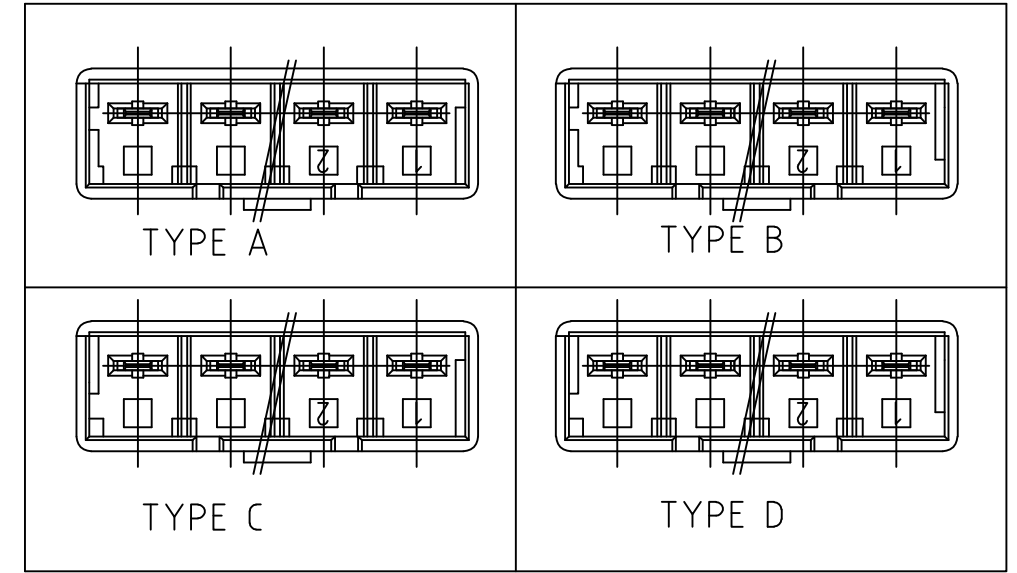


THIS DRAWING IS UNPUBLISHED. RELEASED FOR PUBLICATION
 © COPYRIGHT - By - ALL RIGHTS RESERVED.

LOC	DIST	REVISIONS 変更			
P	LTR	DESCRIPTION	DATE	DWN	APVD
J	-	E	REVISED PER ECR-12-015003	23AUG12	A.Z F.M
		E1	REVISED PER ECR-14-011125	23JUL14	W.W D.Z



キーイングタイプ
THE TYPE OF KEYING

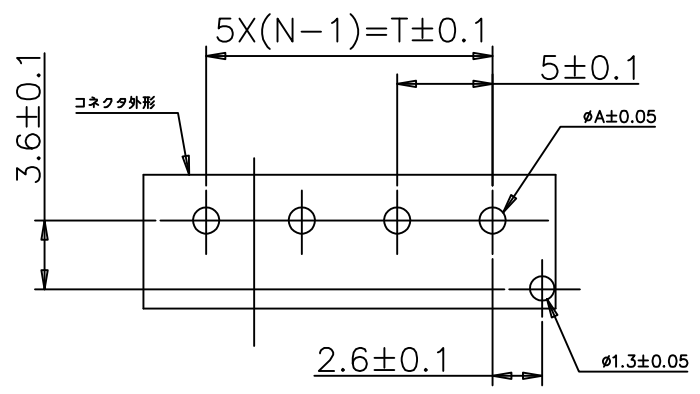


キンク形状:
キンク無し形状は本タイプ
部がストレートである。
KINK SHAPE:
WITHOUT KINK IS
STRAIGHT SHAPE
OF TINE.

寸法	DIMENSION	T	S	N	かん合相手 (プラグ) P/N MATING CONN. P/N	キンク有無 WITH/WITHOUT KINK	キーイングタイプ TYPE OF KEYING	色 Color	極数 Pos	型番 PART NO.
25	31.6	6			1376391-1	WITHOUT KINK	TYPE A	NATURAL	6Pos	5-1376385-1
25	31.6	6			3-1376391-4	WITH KINK	TYPE D	YELLOW	6Pos	3-1376385-4
25	31.6	6			2-1376391-3	WITH KINK	TYPE C	BLUE	6Pos	2-1376385-3
25	31.6	6			1-1376391-2	WITH KINK	TYPE B	RED	6Pos	1-1376385-2
25	31.6	6			1376391-1	WITH KINK	TYPE A	NATURAL	6Pos	1376385-1
15	21.6	4			1376390-5	WITH KINK	TYPE A	NATURAL	4Pos	1-1376384-6
15	21.6	4			1-1376390-5	WITH KINK	TYPE B	RED	4Pos	1-1376384-5
15	21.6	4			1376390-1	WITHOUT KINK	TYPE A	NATURAL	4Pos	5-1376384-1
15	21.6	4			3-1376390-4	WITH KINK	TYPE D	YELLOW	4Pos	3-1376384-4
15	21.6	4			2-1376390-3	WITH KINK	TYPE C	BLUE	4Pos	2-1376384-3
15	21.6	4			1-1376390-2	WITH KINK	TYPE B	RED	4Pos	1-1376384-2
15	21.6	4			1376390-1	WITH KINK	TYPE A	NATURAL	4Pos	1376384-1

NO.	NAME	MATERIAL
②	HEADER HOUSING	6/6 NYLON GRASS FILLED/ NYLON 6
①	TAB	COPPER ALLOY TIN PLATED

NOTES)
 1. RECOMMENDED P.C.B LAY OUT
 2. APPLICABLE P.C.B. THICKNESS:1.6
 3. MATING CONN. P/N
 PLUG HOUSING :SEE TABLE
 4. 1-1376384-5 AND 1-1376384-6 COMPLY
 WITH GLOW WIRE REQUIREMENT FOR
 PARTS OF NON-METALLIC MATERIAL
 SUPPORTING A CURRENT-CARRYING
 CONNECTION DETAILED IN IEC 60335-1,
 SECTION 30 (GWT).



パンチ加工	1.25
ドリル加工	1.4
	A 寸法

プリント基板推奨穴加工寸法

THIS DRAWING IS A CONTROLLED DOCUMENT.

DIMENSIONS: 単位: 耗 mm	TOLERANCES UNLESS OTHERWISE SPECIFIED: 一般公差
0 PLG	± 0.2
1 P/C	±
2 P/LC	±
3 P/C	±
4 P/LC ANGLES	± 1°
FINISH 仕上	SEE TABLE
MATERIAL 材料	SEE TABLE

STE TE Connectivity

5.0 POWER KEY CONNECTOR
4P HEADER ASSEMBLY

APVD: A.OISHI (28AUG'00), Y.KASHIWA (28AUG'00), Y.KASHIWA (28AUG'00)

PRODUCT SPEC: 108-5699

APPLICATION SPEC: 114-5292

WEIGHT: -

SIZE: A3, CAGE CODE: 00779, DRAWING NO: 1376384

SCALE: 3:1, SHEET: 1 OF 1, REV: E1