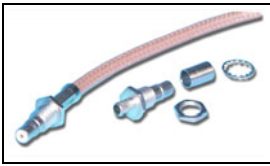


1408339-1 Product Details

[Share](#) [Print](#) [Email](#)



1408339-1

TE Internal Number: 1408339-1

Active

[View 3D PDF](#)

SMA/QMA RF Connectors

Always EU RoHS/ELV Compliant (Statement of Compliance)

Product Highlights:

- Applies To Coaxial Cable
- Connector - RF
- RF Connector Type = QMA
- Jack
- Without Snap-Lock

[View all Features](#)

Quick Links

- ▶ [Pricing & Availability](#)
- ▶ [Search for Tooling](#)
- ▶ [Product Feature Selector](#)
- ▶ [Contact Us About This Product](#)

[Add to My Part List](#)

[Request Sample](#)

[Find Similar Products](#)

[Buy Product](#)

Documentation & Additional Information

Product Drawings:

- [QMA STRAIGHT CABLE JACK CRIMP ATTACHMENT \(PDF, English\)](#)

Catalog Pages/Data Sheets:

- [QMA Connectors \(PDF, English\)](#)

Product Specifications:

- [QMA \(Snap-On Mating Style Coaxial Connector\) \(PDF, English\)](#)

Application Specifications:

- None Available

Instruction Sheets:

- [QMA Bulkhead Cable Connector Assemblies 1408339-1 th... \(PDF, English\)](#)

CAD Files: (CAD Format & Compression Information)

- [2D Drawing \(DXF, Version B\)](#)
- [3D Model \(IGES, Version B\)](#)
- [3D Model \(STEP, Version B\)](#)

[List all Documents](#)

Related Products:

- [Tooling](#)

Product Features (Please use the Product Drawing for all design activity)

Product Type Features:

- **Product Type** = Connector - RF
- **RF Connector Type** = QMA
- **Gender** = Jack
- **Retractable Collar** = Without
- **Dielectric Material** = PTFE
- **Coupling Nut Material** = Brass
- **Coupling Nut Finish** = Nickel

Mechanical Attachment:

- **Panel Mount Retention** = Without

Electrical Characteristics:

- **Impedance (Ω)** = 50

Termination Features:

- **Coaxial Cable Termination Type** = Crimp
- **Crimp Type** = Hex

Dimensions:

- **Length (mm [in])** = 25.95 [1.022]

Body Features:

- **Body Style** = Straight
- **Body Material** = Brass
- **Body Finish** = Nickel
- **Lockwasher Material** = Phosphor Bronze
- **Ferrule Material** = Copper
- **Ferrule Plating** = Nickel

Contact Features:

- **Center Contact** = With
- **Center Contact Material** = Beryllium Copper
- **Center Contact Plating** = Gold

Configuration Features:

- **Snap-Lock** = Without
- **Coaxial Cable Type (RG/U or Mfg.)** = 174, 188, 316

Industry Standards:

- **Government/Industry Qualification** = No
- **RoHS/ELV Compliance** = RoHS compliant, ELV compliant
- **Lead Free Solder Processes** = Not relevant for lead free process
- **RoHS/ELV Compliance History** = Always was RoHS compliant

Conditions for Usage:

- **Applies To** = Coaxial Cable

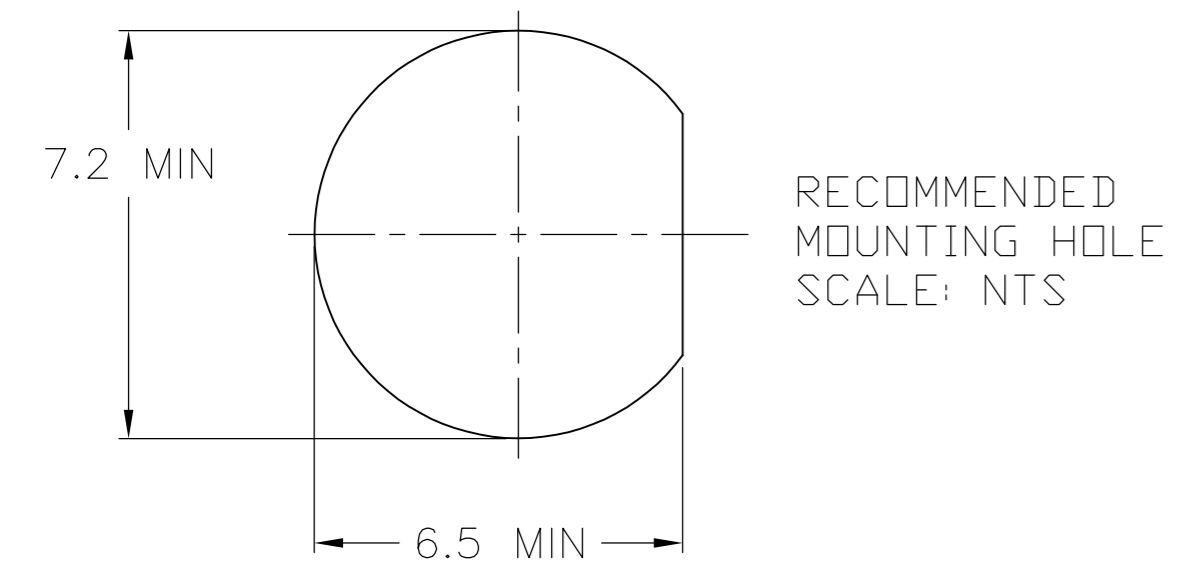
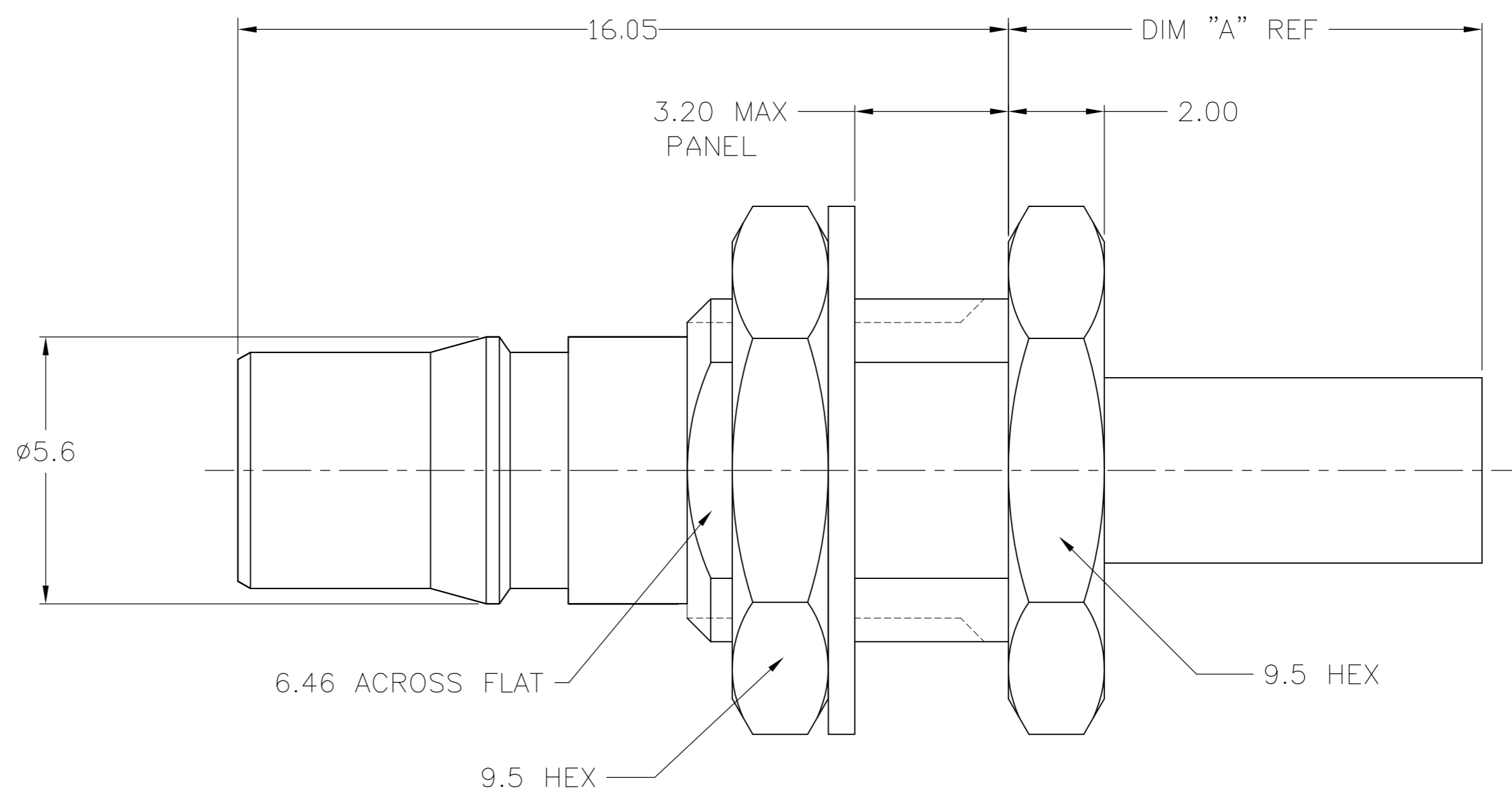
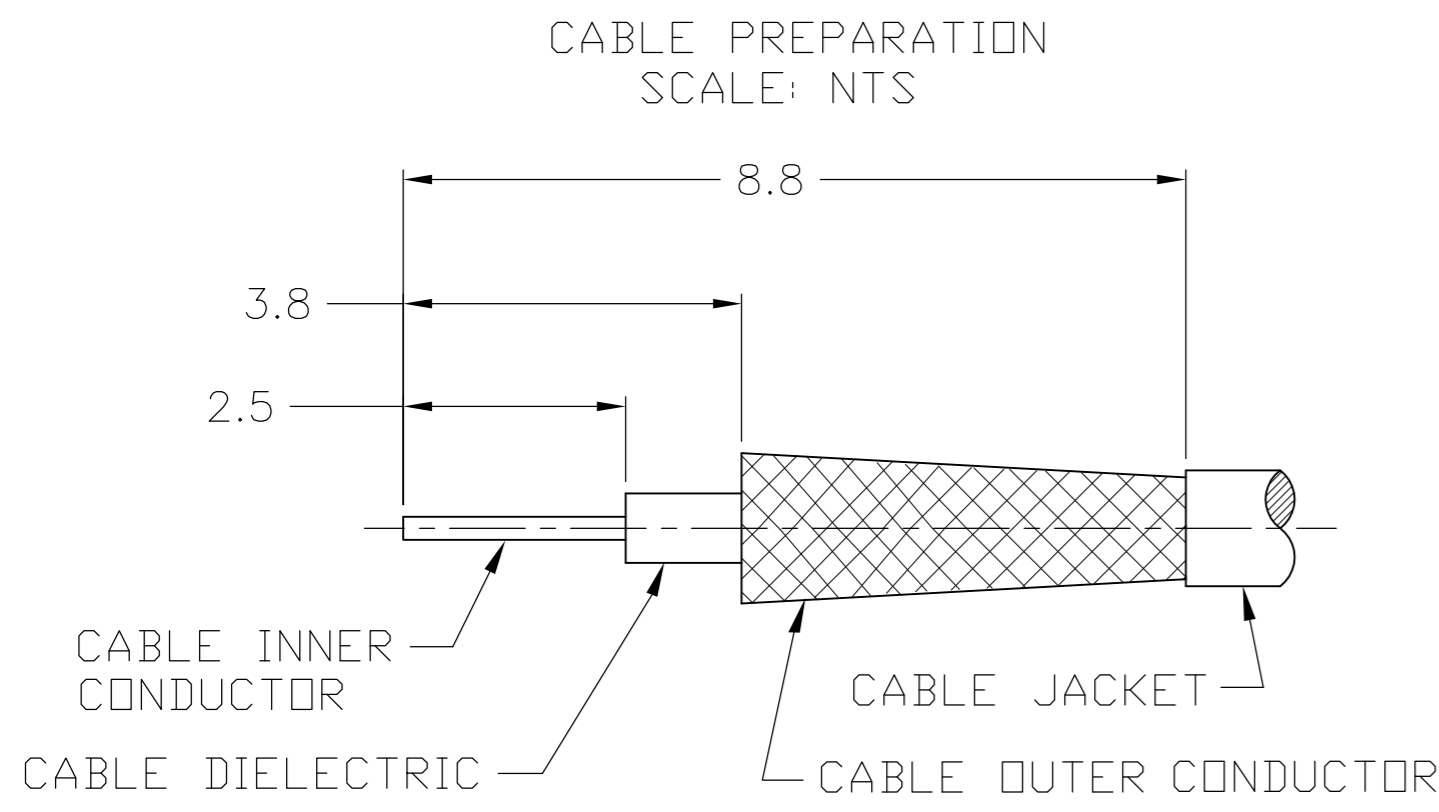
Other:

- **Brand** = TE Connectivity

THIS DRAWING IS UNPUBLISHED. RELEASED FOR PUBLICATION
 © COPYRIGHT BY TYCO ELECTRONICS CORPORATION. ALL RIGHTS RESERVED.

LOC	DIST	REVISIONS					
		P	LTR	DESCRIPTION	DATE	DWN	APVD
AJ	16		C2	REVISED PER ECO-08-000700	2/5/2008	DW	BW
			C3	REVISED PER ECO-09-024927	07NOV09	KK	AEG

- 1. CRIMP FERRULE USING CRIMP DIE HEX SIZE SPECIFIED IN TABLE.
- 2. SINGLE PACKED
- 3. BULK PACKED IN QUANTITIES OF 100
- 4. ASSEMBLE USING INSTRUCTION SHEET IS 408-8817
- 5. OBSOLETE PARTS: OBSOLETE CIS STREAMLINING PER D.RENAUD/D.SINISI



OBSOLETE	3	12.2	5.41	RG58/U, 141, 303 & SF142	8-1403077-0	5-1403080-8	1408411-8	9-446556-2	1408408-2	1408339-8
	2	12.2	5.41	RG58/U, 141, 303 & SF142	8-1403077-0	5-1403080-8	1408411-8	9-446556-2	1408408-2	1408339-7
	3	12.2	5.41	RG55/U, 142, 223 & 400	8-1403077-0	5-1403080-8	1408411-8	2-1403102-5	1408408-2	1408339-6
	2	12.2	5.41	RG55/U, 142, 223 & 400	8-1403077-0	5-1403080-8	1408411-8	2-1403102-5	1408408-2	1408339-5
	3	9.9	3.83	RD316/U	8-1403077-0	5-1403080-8	1408411-4	2-413889-7	1408408-1	1408339-4
	2	9.9	3.83	RD316/U	8-1403077-0	5-1403080-8	1408411-4	2-413889-7	1408408-1	1408339-3
	3	9.9	3.25	RG316/U, 174 & 188	8-1403077-0	5-1403080-8	1408411-4	2-413889-4	1408408-1	1408339-2
	2	9.9	3.25	RG316/U, 174 & 188	8-1403077-0	5-1403080-8	1408411-4	2-413889-4	1408408-1	1408339-1
PACK	DIM A	HEX	CABLE	MTG NUT	WASHER	CONTACT	FERRULE	HSG ASSY	PART NO.	

CENTER CONTACT	BERYLLIUM COPPER	GOLD
HOUSING NUT	BRASS	NICKEL
FERRULE	COPPER OR BRASS	NICKEL
WASHER	BRONZE	NICKEL
DIELECTRIC	PTFE	N/A
COMPONENT	MATERIAL	FINISH

THIS DRAWING IS A CONTROLLED DOCUMENT.

DWN	DCam	25SEP2002
CHK	DG	4/15/03
APVD	DCam	4/15/03
PRODUCT SPEC	108-2087	
APPLICATION SPEC	-	
WEIGHT	-	-
CUSTOMER DRAWING	SCALE 10:1	SHEET 1 OF 1

Tyco Electronics Corporation
Harrisburg, PA 17105-3608

QMA STRAIGHT CABLE JACK CRIMP ATTACHMENT

SIZE A2 CAGE CODE 00779 DRAWING NO C=1408339 RESTRICTED TO -