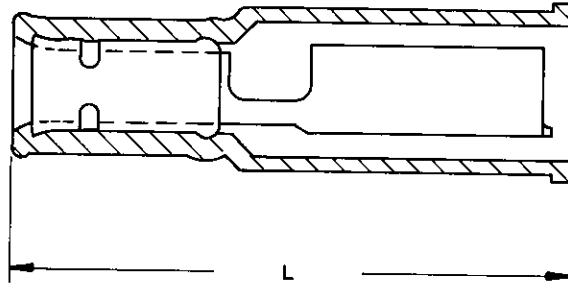


**AMP SHUR PLUG**

Rundstifte und  
Buchsen,  
mit Kupferhülse  
für Leiterunterstützung

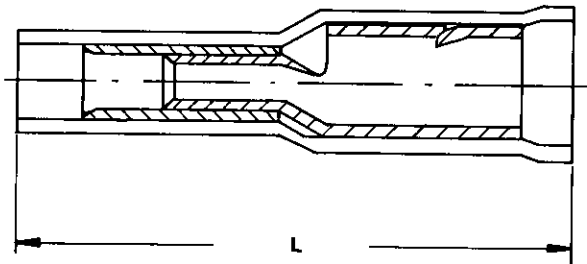
Typ A



Type A

**AMP SHUR PLUG**  
Circular Pins  
and Receptacles,  
Insulated  
with Copper Sleeve  
for Wire Support

Typ B



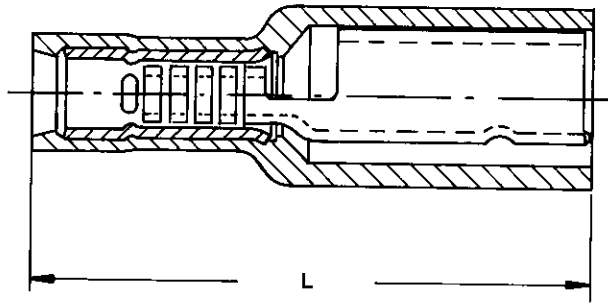
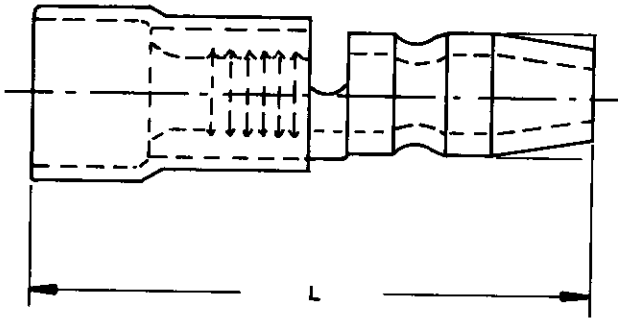
Type B

Typ C

Type C

Typ C

Type C



Pins ← Recept

Typ Type	Stift- durchmesser Pin Diameter (mm)	Leiterquer- schnittsbereich Wire Size Range (mm <sup>2</sup> )	Rundstecker/Receptacles			Stifte/Pins		
			Isolierungs- durchmesser Insulation Diameter	Maß Dimension L max. (mm)	Bestell-Nummer Part Number	Isolierungs- durchmesser Insulation Diameter	Maß Dimension L max. (mm)	Bestell-Nummer Part Number
● A	3,0	0,5-1,5	3,3	24,0	141462-1	● 3,3	25,0	141456-1
● B	4,0	0,5-1,5	3,5	20,2	165590-1	● 2,7	24,0	165591-1
● B	4,0	0,5-1,5	-	-	-	● 3,4	24,1	141455-1
● C	4,0	0,5-1,5	-	-	-	● 2,9	22,9	165399-1
● A	3,0	1,0-2,5	4,0	24,0	141460-1	● 4,0	25,0	141452-1
● C	4,0	1,0-2,5	4,0	19,5	160214-0*	● 4,0	24,7	165429-1
● C	4,0	1,0-2,5	-	-	-	● 4,2	24,0	141451-1
● C	5,0	1,0-2,5	4,3	19,2	160215-0*	● 4,0	24,7	165400-1
● B	5,0	1,0-2,5	4,3	20,7	165621-0	● 3,2	25,0	165622-1

\* ohne Kupferhülse

Handzange: AMP SUPER-CHAMP, Best.-Nr. 169060-8

\* without Copper Sleeve

Hand Tool: AMP SUPER-CHAMP, Part No. 169060-8