



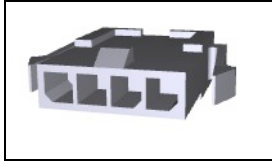
Have a Question?
Chat with a Product Information Specialist

What can we help you find?

Products Industries Resources About TE My Account Innovation Support Center

1445048-4 Product Details

Share Print Email



1445048-4

TE Internal Number: 1445048-4

Active

View 3D PDF

3mm Centerline, 250V, 5 A max.

Always EU RoHS/ELV Compliant (Statement of Compliance)

Product Highlights:

- Wire-to-Wire, Wire-to-Panel
- Applies To Panel, Applies To Wire/Cable
- Connector
- Housing
- Connector Style = Plug

View all Features

Quick Links

- ▶ Pricing & Availability
- ▶ Search for Tooling
- ▶ View Mating Products (1)
- ▶ Product Feature Selector
- ▶ Contact Us About This Product

Add to My Part List Request Sample Find Similar Products Buy Product

Documentation & Additional Information	
<p>Product Drawings:</p> <ul style="list-style-type: none"> • PLUG HOUSING, 2 TO 12 POSITION SINGLE ROW, PANEL MOUNT... (PDF, English) <p>Catalog Pages/Data Sheets:</p> <ul style="list-style-type: none"> • 1773458-4_MICRO_MATE_N_LOK_CONNECTOR_SYSTEM_QRG (PDF, English) • SOFT_SHELL_PIN_AND_SOCKET_CONNECTORS_CATALOG (PDF, English) <p>Product Specifications:</p> <ul style="list-style-type: none"> • None Available <p>Application Specifications:</p> <ul style="list-style-type: none"> • Micro MATE-N-LOK Connectors (PDF, English) <p>Instruction Sheets:</p> <ul style="list-style-type: none"> • None Available <p>CAD Files: (CAD Format & Compression Information)</p> <ul style="list-style-type: none"> • 2D Drawing (DXF, Version 0) • 3D Model (IGES, Version 0) • 3D Model (STEP, Version 0) 	<p>Additional Information:</p> <ul style="list-style-type: none"> • Product Line Information <p>Related Products:</p> <ul style="list-style-type: none"> • Tooling • Mating Products (1)

List all Documents

Product Features (Please use the Product Drawing for all design activity)	
<p>Product Type Features:</p> <ul style="list-style-type: none"> • Product Type = Connector • Connector Type = Housing • Strain Relief = Without • UL File Number = E28476 • CSA File Number = LR 7189 <p>Mechanical Attachment:</p> <ul style="list-style-type: none"> • Panel Mount Retention = With • Mating Retention Type = Locking Tab • Panel Mount Retention Type = Locking Latch <p>Electrical Characteristics:</p> <ul style="list-style-type: none"> • Operating Voltage Reference = AC/DC • Operating Voltage (VAC) = 250 • Operating Voltage (VDC) = 250 <p>Dimensions:</p> <ul style="list-style-type: none"> • Panel Thickness (mm [in]) = 1.57 - 2.30 [0.062 - 0.091] <p>Body Features:</p> <ul style="list-style-type: none"> • Mating Retention = With <p>Contact Features:</p> <ul style="list-style-type: none"> • Contact Type = Pin • Contact Layout = In-Line 	<p>Configuration Features:</p> <ul style="list-style-type: none"> • Number of Positions = 4 • Number of Rows = 1 <p>Industry Standards:</p> <ul style="list-style-type: none"> • RoHS/ELV Compliance = RoHS compliant, ELV compliant • Lead Free Solder Processes = Not relevant for lead free process • RoHS/ELV Compliance History = Always was RoHS compliant • VDE Tested = Yes • Agency/Standard = UL, CSA • UL Rating = Recognized • CSA Rating = Certified <p>Environmental:</p> <ul style="list-style-type: none"> • Operating Temperature (°C [°F]) = -40 - +105 [-40 - +221] <p>Conditions for Usage:</p> <ul style="list-style-type: none"> • Applies To = Panel, Wire/Cable <p>Operation/Application:</p> <ul style="list-style-type: none"> • Application Use = Wire-to-Wire, Wire-to-Panel <p>Packaging Features:</p> <ul style="list-style-type: none"> • Packaging Method = Bag • Packaging Quantity = 1,000

Housing Features:

- Connector Style = Plug
- Housing Color = Black
- Housing Material = Nylon 66/6
- Centerline (mm [in]) = 3.00 [0.118]
- Mating Alignment = With
- Mating Alignment Type = Polarization
- UL Flammability Rating = UL 94V-0

Other:

- Brand = AMP

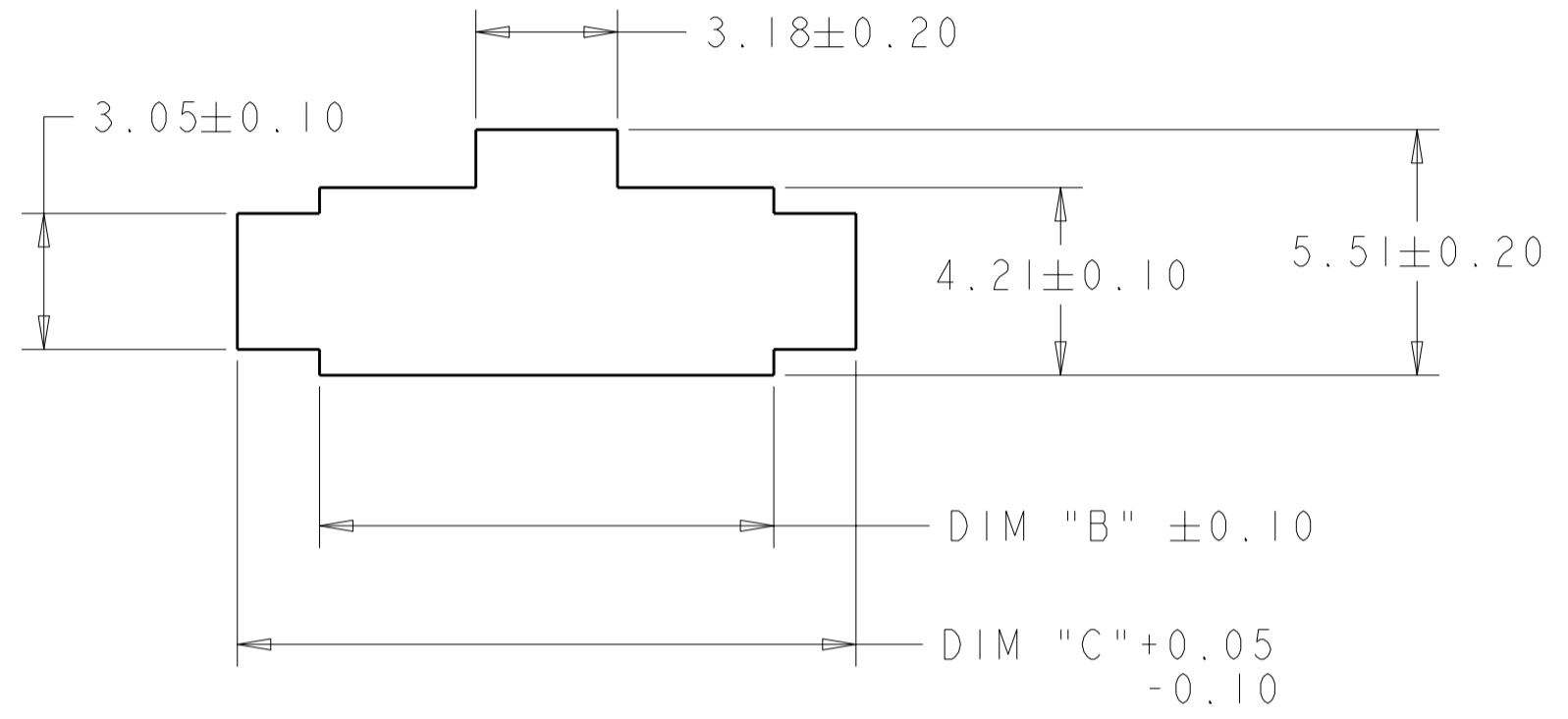
Corporate Information[About TE](#)[Investors](#)[News Room](#)[Supplier Portal](#)[Careers](#)[Terms & Conditions](#)[Privacy Policy](#)**Quick Links**[Distributor Inventory](#)[Product Cross Reference](#)[Documents & Drawings](#)[Product Compliance Support Center](#)[Site Map](#)**Customer Support**[Email or Chat With Us](#)[Find a Phone Number](#)[Knowledge Base](#)[Manage Your Account](#)**Keep Me Informed**

© 2013 Tyco Electronics Corporation, a TE Connectivity Ltd. company. All Rights Reserved |

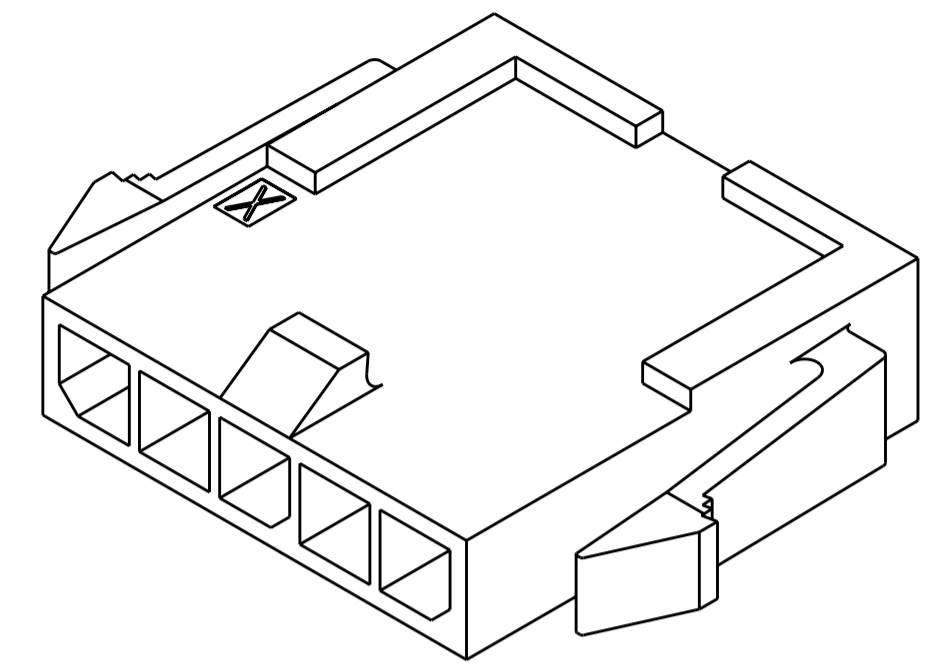
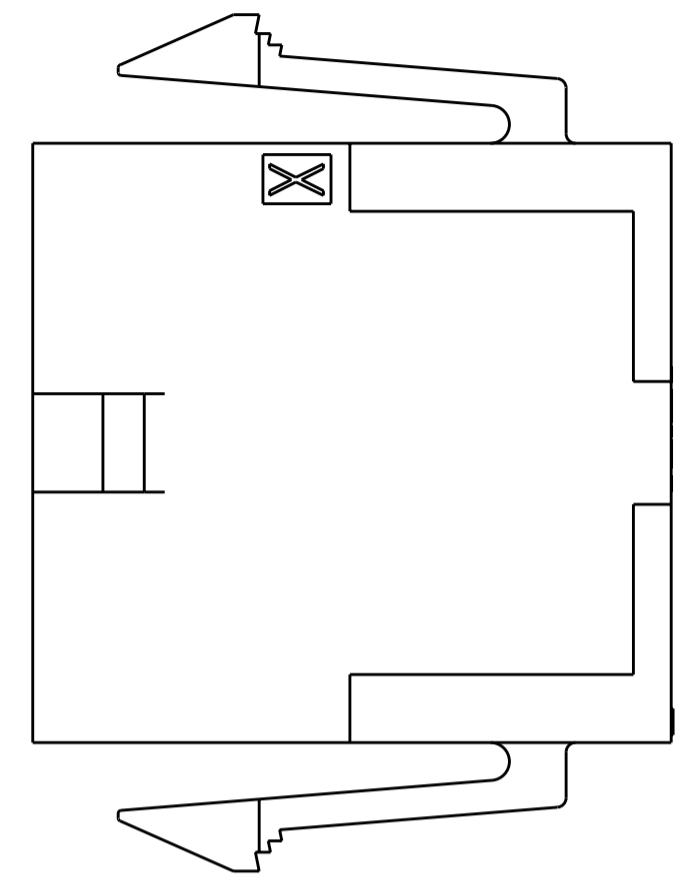
[Provide Website Feedback](#)

THIS DRAWING IS UNPUBLISHED. RELEASED FOR PUBLICATION 20
 © COPYRIGHT 20 ALL RIGHTS RESERVED.

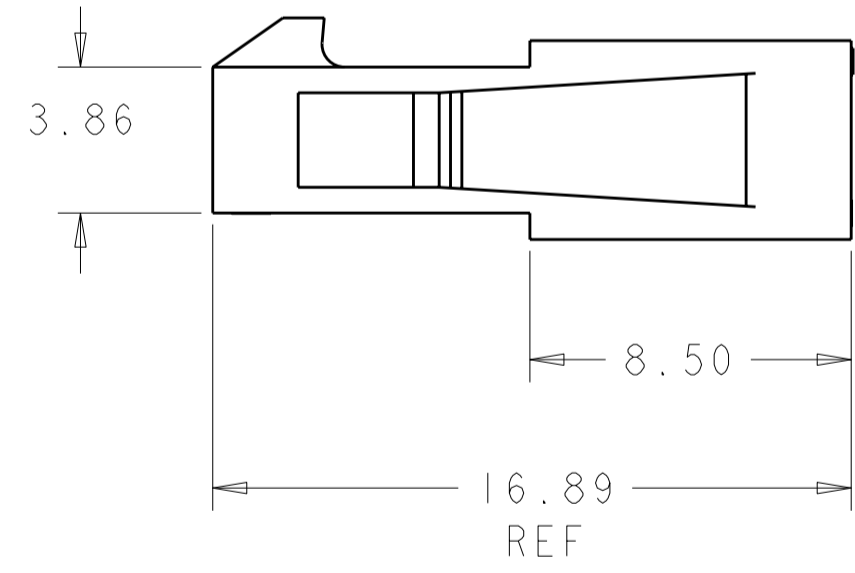
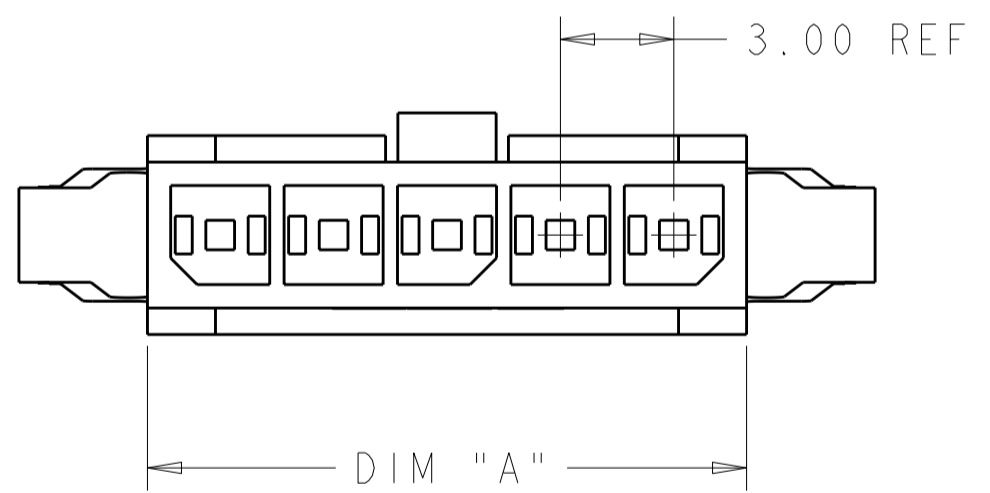
LOC		DIST		REVISIONS				
P	LTR	DESCRIPTION	DATE	DWN	APVD			
CM	00	P		REVISD PER ECO-11-005294	06APR2011	RK	HMR	



PANEL CUT-OUT



SCALE 5:1



40.88	37.20	36.85	12	1-1445048-2
37.88	34.20	33.85	11	1-1445048-1
34.88	31.20	30.85	10	1-1445048-0
31.88	28.20	27.85	9	1445048-9
28.88	25.20	24.85	8	1445048-8
25.88	22.20	21.85	7	1445048-7
22.88	19.20	18.85	6	1445048-6
19.88	16.20	15.85	5	1445048-5
16.88	13.20	12.85	4	1445048-4
13.88	10.20	9.85	3	1445048-3
10.88	7.20	6.85	2	1445048-2
DIM C	DIM B	DIM A	NO. OF POS.	PART NUMBER

RECOMMENDED PANEL THICKNESS 1.57-2.3.

2. PANEL MUST BE PUNCHED SO THAT HOUSING ENTERS THE PANEL IN THE SAME DIRECTION AS THE PUNCH.



THIS DRAWING IS A CONTROLLED DOCUMENT.

DIMENSIONS: mm	TOLERANCES UNLESS OTHERWISE SPECIFIED:	DWN W. J. RUDY 29AUG2000	TE Connectivity NAME PLUG HOUSING, 2 TO 12 POSITION SINGLE ROW, PANEL MOUNT MICRO MATE-N-LOK™ SIZE A2 CAGE CODE 00779 DRAWING NO. 1445048 RESTRICTED TO - SCALE 6:1 SHEET 1 OF 1 REV P
	0 PLC ±	CHK W. DAVIS 29AUG2000	
	1 PLC ±	APVD W. DAVIS 29AUG2000	
	2 PLC ±0.13	PRODUCT SPEC -	
	3 PLC ±	APPLICATION SPEC -	
	4 PLC ±	WEIGHT -	
	ANGLES ±	CUSTOMER DRAWING	
	FINISH ±		

MATERIAL: NYLON, UL94V-0, BLACK