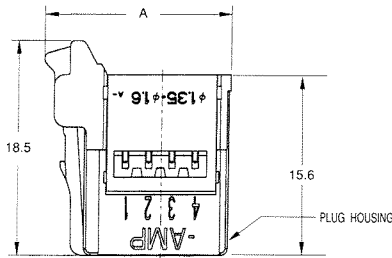


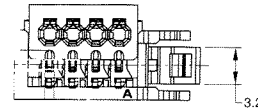
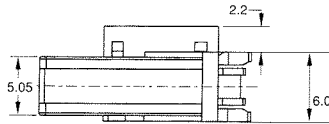
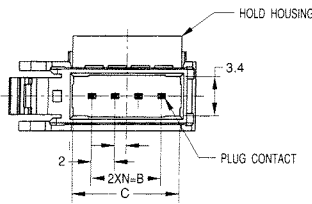
プラグ・アセンブリ
Plug Assembly

X-1473562-X
 3~8 コネクタの極数を示す
 3~8 It shows position of connectors
 適用電線範囲を示す It shows wire range
 Blank:Yellow 1:-Red 2:-Blue 3:-Orange 4:-Green



極数 No. of	寸法 (Dimensions)	型番 (Part Number)				
		ホールド・ハウジングの色 (Hold Housing Color)				
Pos.	N A B C	黄色 (Yellow)	赤色 (Red)	青色 (Blue)	橙色 (Orange)	緑色 (Green)
3	2 14.1 4 7.2	1473562-3	1-1473562-3	2-1473562-3	3-1473562-3	4-1473562-3
4	3 16.1 6 9.2	1473562-4	1-1473562-4	2-1473562-4	3-1473562-4	4-1473562-4
5*	5 20.1 10 13.2	1473562-5	1-1473562-5	2-1473562-5	3-1473562-5	4-1473562-5
6	5 20.1 10 13.2	1473562-6	1-1473562-6	2-1473562-6	3-1473562-6	4-1473562-6
7*	7 24.1 14 17.2	1473562-7	1-1473562-7	2-1473562-7	3-1473562-7	4-1473562-7
8	7 24.1 14 17.2	1473562-8	1-1473562-8	2-1473562-8	3-1473562-8	4-1473562-8

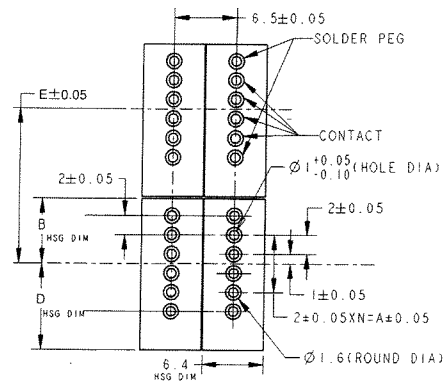
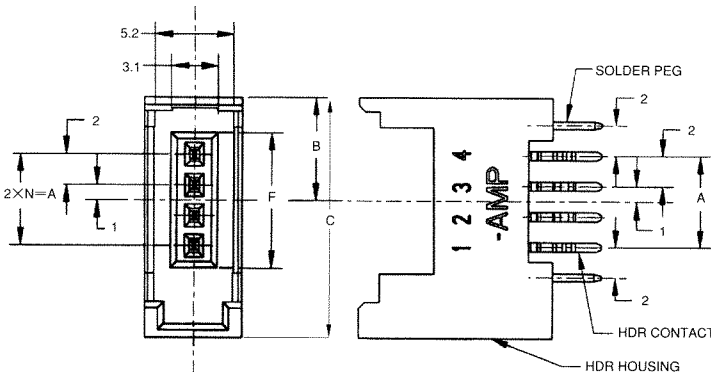
*5極と7極は回路番号6と8にコンタクトが装着されません。
 *The 5-position and the 7-position assemblies do not have contacts at the circuit number 6 and 8 respectively.



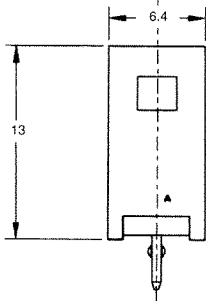
基板取付けヘッダー
1列タイプ

Board Mount Header
1Row Type

1473565-X
 3~8 コネクタの極数を示す
 3~8 It shows position of connectors



プリント基板取付寸法 推奨基板寸法:1.6±0.2
 PC Board Layout Board thickness:1.6±0.2



極数 No. of	寸法 (Dimensions)	型番 (Part Number)
3	2 4 5.75 13.8 8.05 14 6.9	1473565-3
4	3 6 6.75 15.8 9.05 16 8.9	1473565-4
5*	5 8 8.75 19.8 11.05 20 12.9	1473565-5
6	5 10 8.75 19.8 11.05 20 12.9	1473565-6
7*	7 12 10.75 23.8 13.05 24 16.9	1473565-7
8	7 14 10.75 23.8 13.05 24 16.9	1473565-8

*5極と7極は回路番号6と8にコンタクトが装着されません。
 *The 5-position and the 7-position assemblies do not have contacts at their circuit number 6 and 8 respectively.