



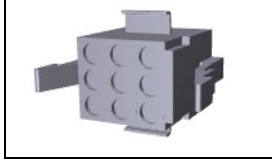
Have a Question?  
Chat with a Product  
Information Specialist

What can we help you find?

[Products](#) [Industries](#) [Resources](#) [About TE](#) [My Account](#) [Innovation](#) [Support Center](#)

**1-480274-0 Product Details**

[Share](#) [Print](#) [Email](#)



**1-480274-0**

TE Internal Number: 1-480274-0

Active

[View 3D PDF](#)

**.200" Centerline, 250 V, 13 A max.**

Always EU RoHS/ELV Compliant (Statement of Compliance)

**Product Highlights:**

- Commercial MATE-N-LOK Product Line
- Wire-to-Panel / Wire-to-Wire
- Applies To Panel, Applies To Wire/Cable
- Connector
- Housing

[View all Features](#)

**Quick Links**

- ▶ Pricing & Availability
- ▶ Search for Tooling
- ▶ View Mating Products (1)
- ▶ View Contacts (139)
- ▶ Product Feature Selector
- ▶ Contact Us About This Product

[Add to My Part List](#) [Request Sample](#) [Find Similar Products](#) [Buy Product](#)

**Documentation & Additional Information**

**Product Drawings:**

- mounting information for 9 cir panel mt mate-n-lok ... (PDF, English)

**Catalog Pages/Data Sheets:**

- SOFT\_SHELL\_PIN\_SOCKET\_CONNECTORS\_STANDARD\_DENSITY (PDF, English)

**Product Specifications:**

- MATE-N-LOK Commercial Connector (PDF, English)

**Application Specifications:**

- Commercial MATE-N-LOK Pin And Socket Contacts (PDF, English)
- MATE-N-LOK Commercial Pin and Socket Contacts (PDF, Japanese)

**Instruction Sheets:**

- MATE-N-LOK PANEL-MOUNT CONNECTORS (PDF, English)
- Universal, Commercial, and .140 MATE-N-LOK Contact ... (PDF, English)

**CAD Files: (CAD Format & Compression Information)**

- 2D Drawing (DXF, Version P)
- 3D Model (IGES, Version P)
- 3D Model (STEP, Version P)

[List all Documents](#)

**Additional Information:**

- Product Line Information

**Related Products:**

- Tooling
- Mating Products (1)
- Contacts (139)

**Product Features (Please use the Product Drawing for all design activity)**

**Product Type Features:**

- Product Line = Commercial MATE-N-LOK
- Product Type = Connector
- Connector Type = Housing
- Sealed = No
- UL File Number = E28476
- CSA File Number = LR 16455

**Mechanical Attachment:**

- Mating Retention Type = Positive Lock
- Panel Mount Retention = With
- Panel Mount Retention Type = Locking Leg

**Electrical Characteristics:**

- Operating Voltage Reference = AC
- Operating Voltage (VAC) = 250

**Dimensions:**

- Panel Thickness (mm [in]) = 0.64 - 1.65 [0.025 - 0.065]

**Body Features:**

- Row-to-Row Spacing (mm [in]) = 6.09 [0.240]
- Mating Retention = With

**Contact Features:**

- Contact Type = Socket

**Configuration Features:**

- Number of Positions = 9
- Number of Rows = 3

**Industry Standards:**

- RoHS/ELV Compliance = RoHS compliant, ELV compliant
- Lead Free Solder Processes = Not relevant for lead free process
- RoHS/ELV Compliance History = Always was RoHS compliant

- VDE Tested = No
- Agency/Standard = CSA, UL
- UL Rating = Certified, Recognized

**Identification Marking:**

- Circuit Identification Feature = With

**Environmental:**

- Operating Temperature (°C [°F]) = -55 - +105 [-67 - +221]

**Conditions for Usage:**

- Applies To = Panel, Wire/Cable
- For Use With = Pin (Cap) Housing

**Operation/Application:**

- Application Use = Wire-to-Panel / Wire-to-Wire

- Contact Layout = Matrix

**Housing Features:**

- Connector Style = Socket (Plug)
- Housing Color = Natural
- Centerline (mm [in]) = 5.13 [0.202]
- Mating Alignment = With
- Mating Alignment Type = Polarization
- Housing Material = Nylon
- UL Flammability Rating = UL 94V-2

**Packaging Features:**

- Packaging Method = Package
- Packaging Quantity = 1500

**Other:**

- Brand = AMP

**Corporate Information**

- [About TE](#)
- [Investors](#)
- [News Room](#)
- [Supplier Portal](#)
- [Careers](#)
- [Terms & Conditions](#)
- [Privacy Policy](#)

**Quick Links**

- [Distributor Inventory](#)
- [Product Cross Reference](#)
- [Documents & Drawings](#)
- [Product Compliance Support Center](#)
- [Site Map](#)

**Customer Support**

- [Email or Chat With Us](#)
- [Find a Phone Number](#)
- [Knowledge Base](#)
- [Manage Your Account](#)

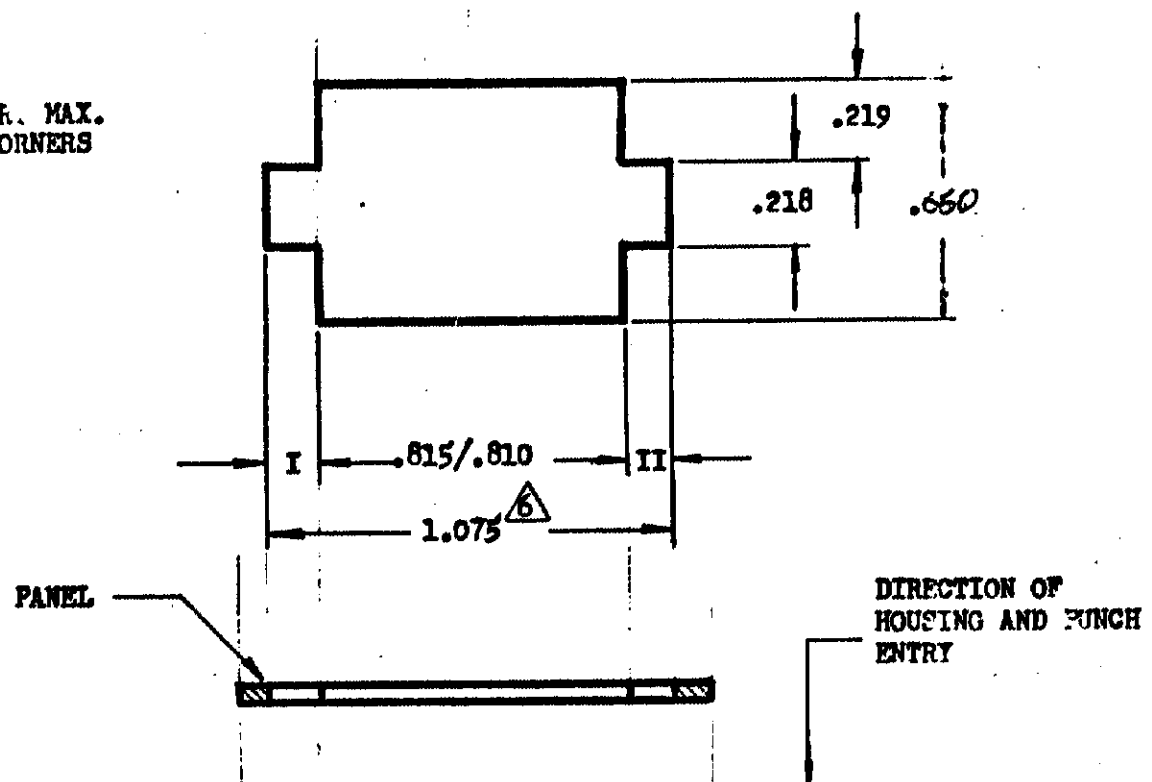
**Keep Me Informed**





SHEET 2 OF  
NUMBER  
480274

.015 R. MAX.  
ALL CORNERS



- NOTE: 1. Recommended panel thickness .025-.065.
2. Both locking legs to be squeezed together and housing to be inserted straight-in, as opposed to a rocking manner of insertion.
3. The panel must be punched so that the housing enters the panel in the same direction as the punch.
4. Dimensions I and II to be equal within .005.
5. Panel must not have any material (paint, porcelain, etc.) applied in the mounting hole area that would decrease retention of the housing in the panel.
- △ If Notes 3 and/or 5 are not complied with, the 1.075 dimension should be reduced to 1.055 to assure proper housing retention in the panel.

DIMENSIONS IN INCHES. DO NOT SCALE PRINT.

PRINT DIST  
53  
K

				©1972 BY AMP INCORPORATED. ALL RIGHTS RESERVED. AMP PRODUCTS COVERED BY PATENTS AND/OR PATENTS PENDING		CUSTOMER COPY REFERENCE ONLY			
				MATERIAL AND FINISH		AMP INCORPORATED HARRISBURG, PENNA.			
				WIRE — RANGE — INSULATION		CLASS			
				TYPE					
LYR	REVISION RECORD	ECN	DR CHK	DATE	TOLERANCE EXCEPT AS NOTED ± .005	SCALE E 1" = 0'	L' CM	NO A 480274	REV P
DR DAYTON HOLMES 7-26-72		DE		NAME RECOMMENDED MOUNTING INFORMATION		9 CIRCUIT MATE-N-LOK™ PANEL MOUNT PLUG			
CHK Thumler 7-26-72		APP Thumler 7-26-72							