



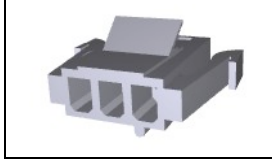
Have a Question?
Chat with a Product Information Specialist

What can we help you find?

[Products](#) [Industries](#) [Resources](#) [About TE](#) [My Account](#) [Innovation](#) [Support Center](#)

1-480304-0 Product Details

[Share](#) [Print](#) [Email](#)



1-480304-0

TE Internal Number: 1-480304-0

Active

[View 3D PDF](#)

.200" Centerline, 250 V, 13 A max.

Always EU RoHS/ELV Compliant (Statement of Compliance)

Product Highlights:

- Commercial MATE-N-LOK Product Line
- Wire-to-Panel / Wire-to-Wire
- Applies To Panel, Applies To Wire/Cable
- Connector
- Housing

[View all Features](#)

Quick Links

- ▶ Pricing & Availability
- ▶ Search for Tooling
- ▶ View Mating Products (3)
- ▶ View Contacts (139)
- ▶ Product Feature Selector
- ▶ Contact Us About This Product

[Add to My Part List](#) [Request Sample](#) [Find Similar Products](#) [Buy Product](#)

Documentation & Additional Information

Product Drawings:

- [PLUG, 3 CIRCUIT, MATE-N-LOK](#) (PDF, English)

Catalog Pages/Data Sheets:

- [SOFT_SHELL_PIN_SOCKET_CONNECTORS_STANDARD_DENSITY](#) (PDF, English)

Product Specifications:

- [MATE-N-LOK Commercial Connector](#) (PDF, English)

Application Specifications:

- [Commercial MATE-N-LOK Pin And Socket Contacts](#) (PDF, English)
- [MATE-N-LOK Commercial Pin and Socket Contacts](#) (PDF, Japanese)

Instruction Sheets:

- [Dentent-Engagement MATE-N-LOK Connectors](#) (PDF, English)
- [Universal, Commercial, and .140 MATE-N-LOK Contact ...](#) (PDF, English)

CAD Files: ([CAD Format & Compression Information](#))

- [2D Drawing](#) (DXF, Version U)
- [3D Model](#) (IGES, Version U)
- [3D Model](#) (STEP, Version U)

[List all Documents](#)

Additional Information:

- [Product Line Information](#)

Related Products:

- [Tooling](#)
- [Mating Products \(3\)](#)
- [Contacts \(139\)](#)

Product Features (Please use the Product Drawing for all design activity)

Product Type Features:

- Product Line = Commercial MATE-N-LOK
- Product Type = Connector
- Connector Type = Housing
- Sealed = No
- UL File Number = E28476
- CSA File Number = LR 16455

Mechanical Attachment:

- Mating Retention Type = Positive Lock
- Panel Mount Retention = With
- Panel Mount Retention Type = Locking Leg

Electrical Characteristics:

- Operating Voltage Reference = AC
- Operating Voltage (VAC) = 250

Dimensions:

- Panel Thickness (mm [in]) = 0.64 - 1.65 [0.025 - 0.065]

Body Features:

- Mating Retention = With

Contact Features:

- Contact Type = Socket
- Contact Layout = In-Line

Configuration Features:

- Number of Positions = 3
- Number of Rows = 1

Industry Standards:

- [RoHS/ELV Compliance](#) = RoHS compliant, ELV compliant
- [Lead Free Solder Processes](#) = Not relevant for lead free process
- [RoHS/ELV Compliance History](#) = Always was RoHS compliant

- VDE Tested = No
- Agency/Standard = UL, CSA
- UL Rating = Recognized, Certified

Identification Marking:

- Circuit Identification Feature = With

Environmental:

- Operating Temperature (°C [°F]) = -55 - +105 [-67 - +221]

Conditions for Usage:

- Applies To = Panel, Wire/Cable
- For Use With = Pin (Cap) Housing

Operation/Application:

- Application Use = Wire-to-Panel / Wire-to-Wire

Housing Features:

- Connector Style = Socket (Plug)
- Housing Color = Natural
- Centerline (mm [in]) = 5.08 [0.200]
- Mating Alignment = With
- Mating Alignment Type = Polarization
- Housing Material = Nylon
- UL Flammability Rating = UL 94V-2

Packaging Features:

- Packaging Method = Package
- Packaging Quantity = 1

Other:

- Brand = AMP

Corporate Information

- [About TE](#)
- [Investors](#)
- [News Room](#)
- [Supplier Portal](#)
- [Careers](#)
- [Terms & Conditions](#)
- [Privacy Policy](#)

Quick Links

- [Distributor Inventory](#)
- [Product Cross Reference](#)
- [Documents & Drawings](#)
- [Product Compliance Support Center](#)
- [Site Map](#)

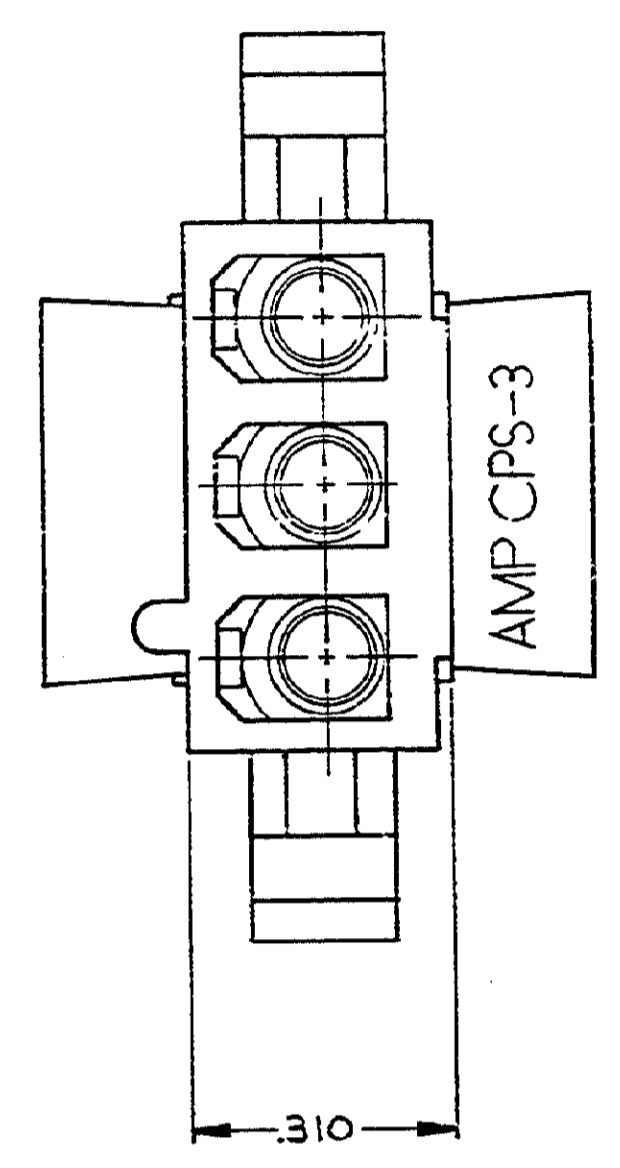
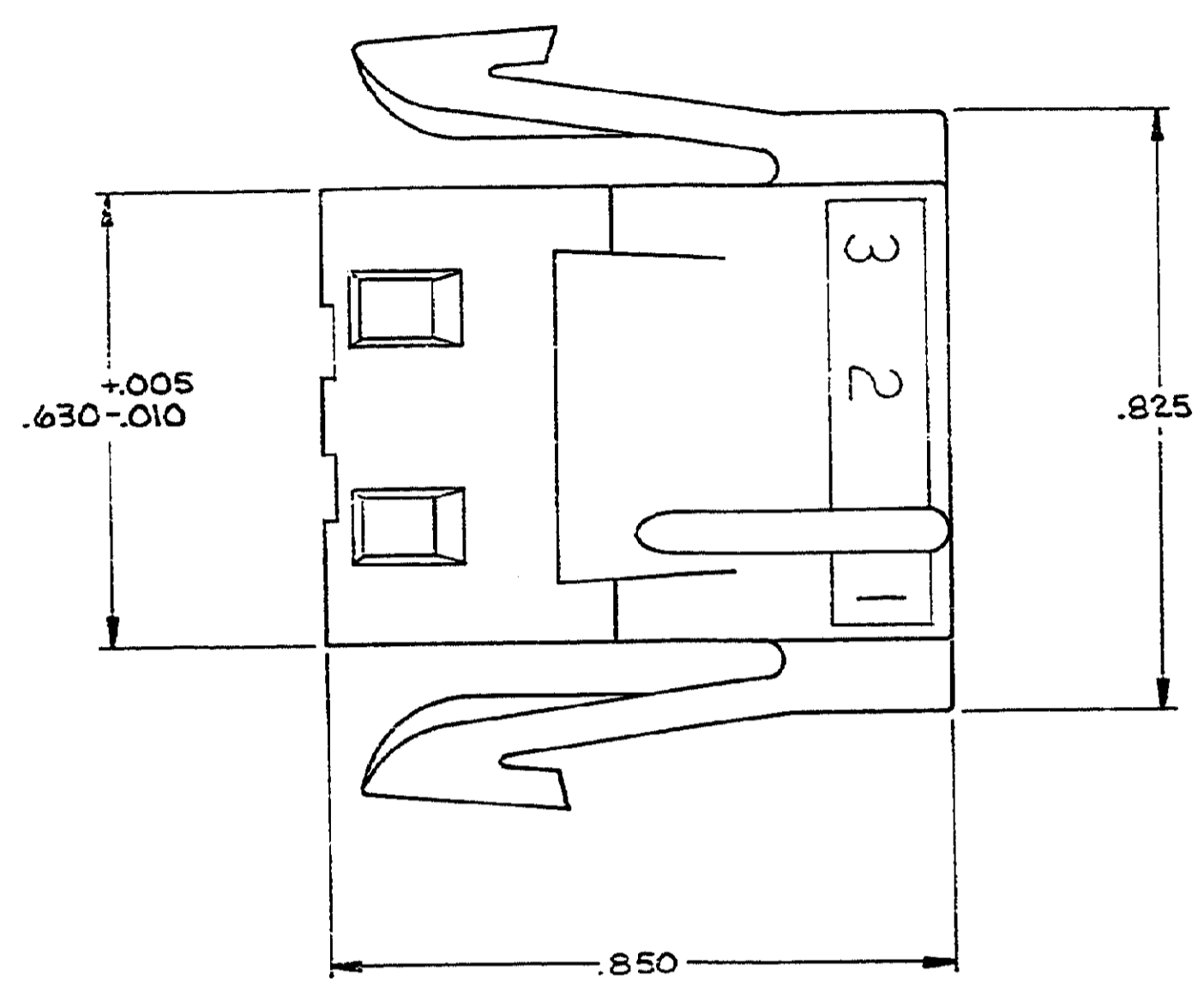
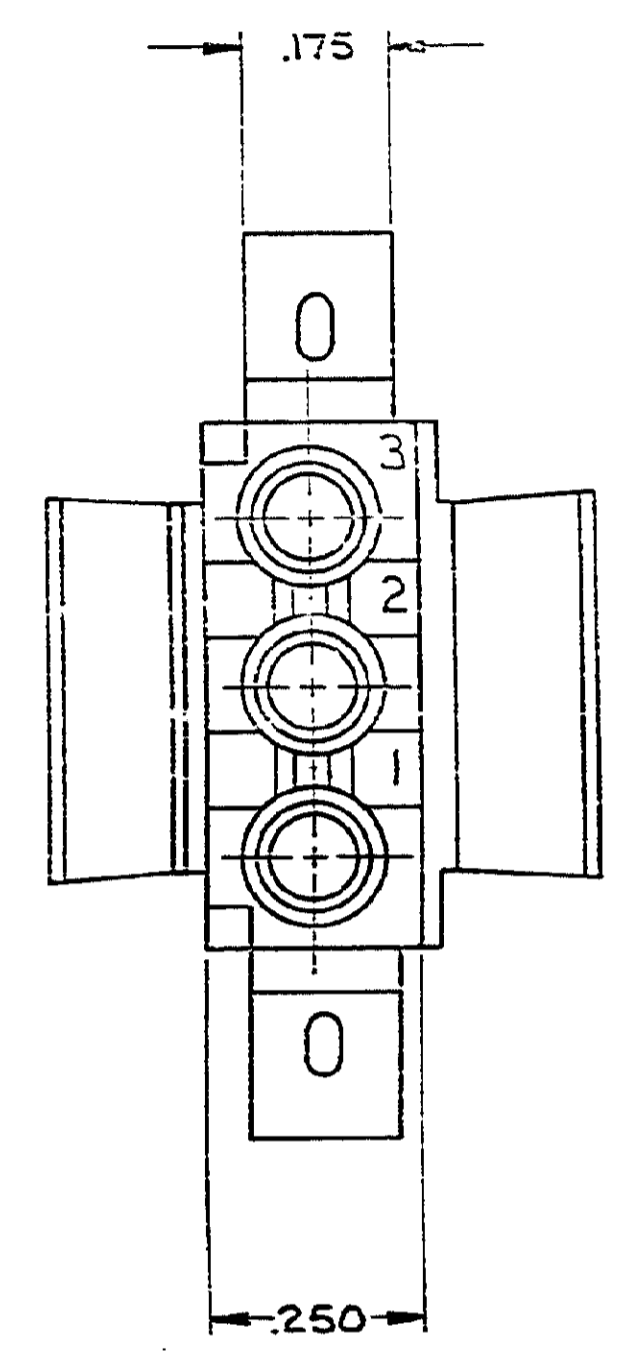
Customer Support

- [Email or Chat With Us](#)
- [Find a Phone Number](#)
- [Knowledge Base](#)
- [Manage Your Account](#)

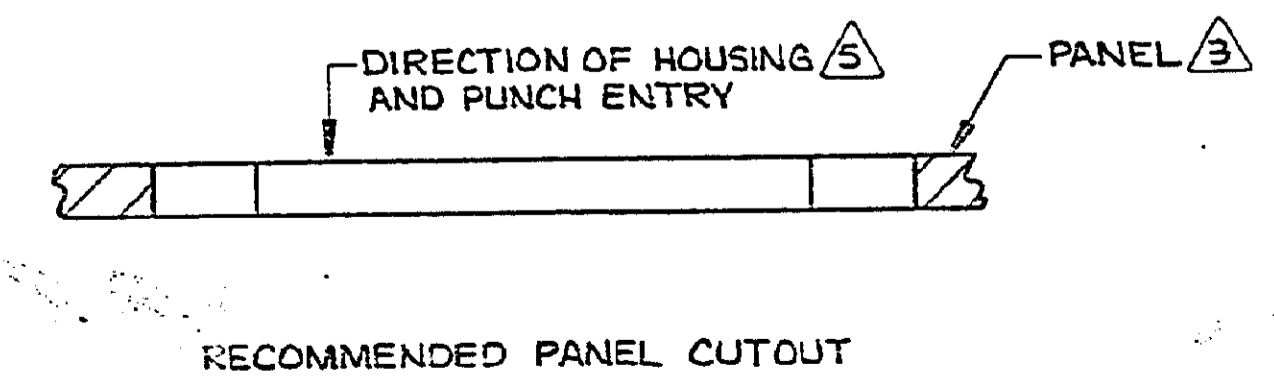
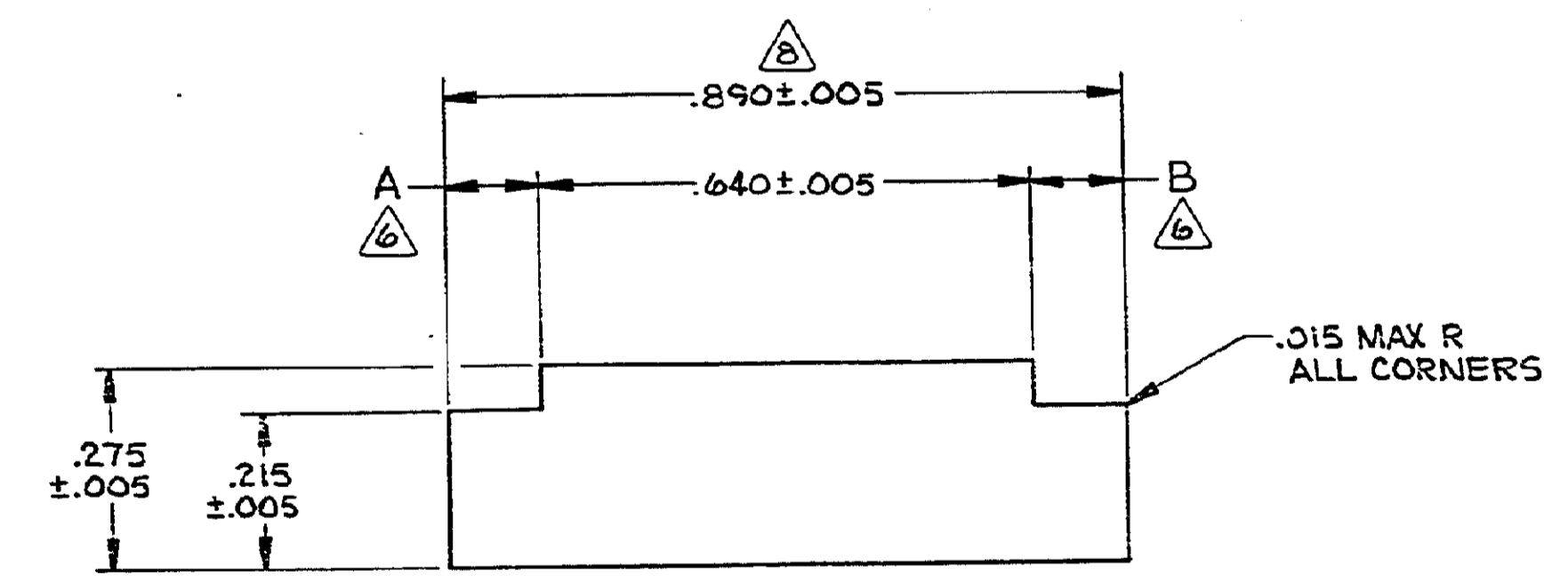
Keep Me Informed



REVISIONS				
REV	ZONE	DESCRIPTION	DATE	APPROVED
U1		REVISED PER ECO-11-005294	11APR11	HMR



1. MATES WITH CAP PART NUMBER 480305.
2. ACCEPTS MATE-N-LOK SOCKET CONTACTS.
3. RECOMMENDED PANEL THICKNESS .025-.065.
4. BOTH LOCKING LEGS TO BE SQUEEZED TOGETHER AND HOUSING TO BE INSERTED "STRAIGHT-IN" AS OPPOSED TO A ROCKING MANNER OF INSERTION.
5. PANEL MUST BE PUNCHED SO THAT THE HOUSING ENTERS THE PANEL IN THE SAME DIRECTION AS THE PUNCH.
6. DIMENSIONS A AND B TO BE EQUAL WITHIN .005.
7. PANEL MUST NOT HAVE ANY MATERIAL (PAINT, PORCELAIN, ETC.) APPLIED IN THE MOUNTING HOLE AREA THAT WOULD DECREASE RETENTION OF THE HOUSING IN THE PANEL.
8. IF NOTES 5 AND/OR 7 ARE NOT COMPLIED WITH, THE .890 DIMENSION SHOULD BE REDUCED TO .880 TO ASSURE PROPER HOUSING RETENTION IN THE PANEL.



UNLESS OTHERWISE SPECIFIED DIMENSIONS ARE IN INCHES. TOLERANCES ON: DECIMALS ± .010 ANGLES =		CONTRACT NO.		NATURAL		NYLON, UL94V-2		1-480304-0	
MATERIAL		DR <i>White</i> 5-30-86		COLOR		MATERIAL		PART NO.	
FINISH		CHK <i>R. Sherry</i> 6-3-86		STE TE Connectivity PLUG, 3 CIRCUIT, MATE-N-LOK™					
		APPD <i>M. Sherry</i> 6-3-86							
		DESIGN APPD		SIZE	FSCM NO.	DRAWING NO.			
		OTHER APPD		D	00779	480304			
				SCALE 5:1		SHEET 1 OF 1			