



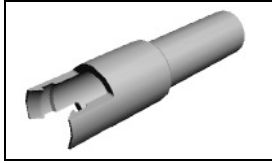
Have a Question?
Chat with a Product Information Specialist

What can we help you find?

[Products](#) [Industries](#) [Resources](#) [About TE](#) [My Account](#) [Innovation](#) [Support Center](#)

1-480350-0 Product Details

[Share](#) [Print](#) [Email](#)



1-480350-0

TE Internal Number: 1-480350-0

Active

[View 3D PDF](#)

.200" Centerline, 250 V, 13 A max.

Always EU RoHS/ELV Compliant (Statement of Compliance)

Product Highlights:

- Commercial MATE-N-LOK Product Line
- Wire-to-Wire
- Applies To Wire/Cable
- Connector
- Housing

[View all Features](#)

Quick Links

- ▶ [Pricing & Availability](#)
- ▶ [Search for Tooling](#)
- ▶ [View Mating Products \(2\)](#)
- ▶ [View Contacts \(139\)](#)
- ▶ [Product Feature Selector](#)
- ▶ [Contact Us About This Product](#)

[Add to My Part List](#) [Request Sample](#) [Find Similar Products](#) [Buy Product](#)

Documentation & Additional Information	
<p>Product Drawings:</p> <ul style="list-style-type: none"> • CAP, SINGLE CIRCUIT, COMMERCIAL MATE-N-LOK(TM) (PDF, English) <p>Catalog Pages/Data Sheets:</p> <ul style="list-style-type: none"> • SOFT_SHELL_PIN_SOCKET_CONNECTORS_STANDARD_DENSITY (PDF, English) <p>Product Specifications:</p> <ul style="list-style-type: none"> • None Available <p>Application Specifications:</p> <ul style="list-style-type: none"> • Commercial MATE-N-LOK Pin And Socket Contacts (PDF, English) • MATE-N-LOK Commercial Pin and Socket Contacts (PDF, Japanese) <p>Instruction Sheets:</p> <ul style="list-style-type: none"> • Single Circuit Commercial MATE-N-LOK Connectors (PDF, English) • Universal, Commercial, and .140 MATE-N-LOK Contact ... (PDF, English) <p>CAD Files: (CAD Format & Compression Information)</p> <ul style="list-style-type: none"> • 2D Drawing (DXF, Version M) • 3D Model (IGES, Version M) • 3D Model (STEP, Version M) 	<p>Additional Information:</p> <ul style="list-style-type: none"> • Product Line Information <p>Related Products:</p> <ul style="list-style-type: none"> • Tooling • Mating Products (2) • Contacts (139)

[List all Documents](#)

Product Features (Please use the Product Drawing for all design activity)	
<p>Product Type Features:</p> <ul style="list-style-type: none"> • Product Line = Commercial MATE-N-LOK • Product Type = Connector • Connector Type = Housing • Sealed = No • UL File Number = E28476 • CSA File Number = LR 16455 <p>Mechanical Attachment:</p> <ul style="list-style-type: none"> • Mating Retention Type = Detent Lock • Panel Mount Retention = Without <p>Electrical Characteristics:</p> <ul style="list-style-type: none"> • Operating Voltage Reference = AC • Operating Voltage (VAC) = 250 <p>Body Features:</p> <ul style="list-style-type: none"> • Mating Retention = With <p>Contact Features:</p> <ul style="list-style-type: none"> • Contact Type = Pin <p>Housing Features:</p> <ul style="list-style-type: none"> • Connector Style = Pin (Cap) • Housing Color = Natural • Mating Alignment = With 	<p>Configuration Features:</p> <ul style="list-style-type: none"> • Number of Positions = 1 <p>Industry Standards:</p> <ul style="list-style-type: none"> • RoHS/ELV Compliance = RoHS compliant, ELV compliant • Lead Free Solder Processes = Not relevant for lead free process • RoHS/ELV Compliance History = Always was RoHS compliant • VDE Tested = No • Agency/Standard = UL, CSA • UL Rating = Recognized, Certified <p>Identification Marking:</p> <ul style="list-style-type: none"> • Circuit Identification Feature = Without <p>Environmental:</p> <ul style="list-style-type: none"> • Operating Temperature (°C [°F]) = -55 - +105 [-67 - +221] <p>Conditions for Usage:</p> <ul style="list-style-type: none"> • Applies To = Wire/Cable • For Use With = Socket (Plug) Housing <p>Operation/Application:</p> <ul style="list-style-type: none"> • Application Use = Wire-to-Wire <p>Packaging Features:</p>

- Mating Alignment Type = Polarization
- Housing Material = Nylon
- UL Flammability Rating = UL 94V-2

- Packaging Method = Package
- Packaging Quantity = 1,000

Other:

- Brand = AMP

Corporate Information

- [About TE](#)
- [Investors](#)
- [News Room](#)
- [Supplier Portal](#)
- [Careers](#)
- [Terms & Conditions](#)
- [Privacy Policy](#)

Quick Links

- [Distributor Inventory](#)
- [Product Cross Reference](#)
- [Documents & Drawings](#)
- [Product Compliance Support Center](#)
- [Site Map](#)

Customer Support

- [Email or Chat With Us](#)
- [Find a Phone Number](#)
- [Knowledge Base](#)
- [Manage Your Account](#)

Keep Me Informed



4

3

2

1


THIS DRAWING IS UNPUBLISHED. RELEASED FOR PUBLICATION 20
 © COPYRIGHT 20 BY - ALL RIGHTS RESERVED.

LOC	DIST	REVISIONS			
P	LTR	DESCRIPTION	DATE	DWN	APVD
CM	00	MI	REVISED PER ECO-11-005027	17MAR2011	RK HMR

1. TO BE USED WITH MATE-N-LOK™ PINS
 2. MATES WITH PLUG 480349.
 3 RIBS ARE OPTIONAL CONSTRUCTION AND MAY NOT APPEAR ON PART.

RED	1-480350-2
NATURAL	1-480350-0
COLOR	PART NUMBER

METRIC

THIS DRAWING IS A CONTROLLED DOCUMENT.		DWN K. WHITAKER 22-MAR-2002	 TE Connectivity	
DIMENSIONS: mm [INCHES]		CHK D. COLEY 22-MAR-2002		
TOLERANCES UNLESS OTHERWISE SPECIFIED:		APVD D. COLEY 22-MAR-2002	NAME CAP, SINGLE CIRCUIT, COMMERCIAL MATE-N-LOK(TM)	
0 PLC ±-	1 PLC ±-	PRODUCT SPEC	SIZE CAGE CODE DRAWING NO RESTRICTED TO	
2 PLC ±0.13 [.005]	3 PLC ±-	APPLICATION SPEC	A300779 C-480350 -	
4 PLC ±-	ANGLES ±-	WEIGHT	SCALE 5:1 SHEET 1 OF 1 REV MI	
MATERIAL NYLON, 94V-2	FINISH -	CUSTOMER DRAWING		

1470-19 (3/11)

Pro/ENGINEER DRAWING