



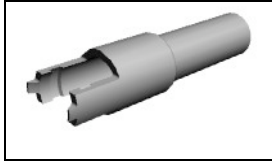
Have a Question?  
Chat with a Product Information Specialist

What can we help you find?

[Products](#) [Industries](#) [Resources](#) [About TE](#) [My Account](#) [Innovation](#) [Support Center](#)

**1-480351-0 Product Details**

[Share](#) [Print](#) [Email](#)



**1-480351-0**

TE Internal Number: 1-480351-0

Active

[View 3D PDF](#)

**.200" Centerline, 250 V, 13 A max.**

Always EU RoHS/ELV Compliant (Statement of Compliance)

**Product Highlights:**

- Commercial MATE-N-LOK Product Line
- Wire-to-Wire
- Applies To Wire/Cable
- Connector
- Housing

[View all Features](#)

**Quick Links**

- ▶ Pricing & Availability
- ▶ Search for Tooling
- ▶ View Mating Products (2)
- ▶ View Contacts (139)
- ▶ Product Feature Selector
- ▶ Contact Us About This Product

[Add to My Part List](#) [Request Sample](#) [Find Similar Products](#) [Buy Product](#)

Documentation & Additional Information	
<p><b>Product Drawings:</b></p> <ul style="list-style-type: none"> <li>• <a href="#">CAP, SINGLE CIRCUIT, COMMERCIAL MATE-N-LOK(TM)</a> (PDF, English)</li> </ul> <p><b>Catalog Pages/Data Sheets:</b></p> <ul style="list-style-type: none"> <li>• <a href="#">SOFT_SHELL_PIN_SOCKET_CONNECTORS_STANDARD_DENSITY</a> (PDF, English)</li> </ul> <p><b>Product Specifications:</b></p> <ul style="list-style-type: none"> <li>• None Available</li> </ul> <p><b>Application Specifications:</b></p> <ul style="list-style-type: none"> <li>• <a href="#">Commercial MATE-N-LOK Pin And Socket Contacts</a> (PDF, English)</li> <li>• <a href="#">MATE-N-LOK Commercial Pin and Socket Contacts</a> (PDF, Japanese)</li> </ul> <p><b>Instruction Sheets:</b></p> <ul style="list-style-type: none"> <li>• <a href="#">Single Circuit Commercial MATE-N-LOK Connectors</a> (PDF, English)</li> <li>• <a href="#">Universal, Commercial, and .140 MATE-N-LOK Contact ...</a> (PDF, English)</li> </ul> <p><b>CAD Files:</b> (<a href="#">CAD Format &amp; Compression Information</a>)</p> <ul style="list-style-type: none"> <li>• <a href="#">2D Drawing</a> (DXF, Version H1)</li> <li>• <a href="#">3D Model</a> (IGES, Version H1)</li> <li>• <a href="#">3D Model</a> (STEP, Version H1)</li> </ul>	<p><b>Additional Information:</b></p> <ul style="list-style-type: none"> <li>• <a href="#">Product Line Information</a></li> </ul> <p><b>Related Products:</b></p> <ul style="list-style-type: none"> <li>• <a href="#">Tooling</a></li> <li>• <a href="#">Mating Products (2)</a></li> <li>• <a href="#">Contacts (139)</a></li> </ul>

[List all Documents](#)

Product Features (Please use the Product Drawing for all design activity)	
<p><b>Product Type Features:</b></p> <ul style="list-style-type: none"> <li>• Product Line = Commercial MATE-N-LOK</li> <li>• Product Type = Connector</li> <li>• Connector Type = Housing</li> <li>• Sealed = No</li> <li>• UL File Number = E28476</li> <li>• CSA File Number = LR 16455</li> </ul> <p><b>Mechanical Attachment:</b></p> <ul style="list-style-type: none"> <li>• Mating Retention Type = Positive Lock</li> <li>• Panel Mount Retention = Without</li> </ul> <p><b>Electrical Characteristics:</b></p> <ul style="list-style-type: none"> <li>• Operating Voltage Reference = AC</li> <li>• Operating Voltage (VAC) = 250</li> </ul> <p><b>Body Features:</b></p> <ul style="list-style-type: none"> <li>• Mating Retention = With</li> </ul> <p><b>Contact Features:</b></p> <ul style="list-style-type: none"> <li>• Contact Type = Pin</li> </ul> <p><b>Housing Features:</b></p> <ul style="list-style-type: none"> <li>• Connector Style = Pin (Cap)</li> <li>• Housing Color = Natural</li> <li>• Mating Alignment = With</li> </ul>	<p><b>Configuration Features:</b></p> <ul style="list-style-type: none"> <li>• Number of Positions = 1</li> </ul> <p><b>Industry Standards:</b></p> <ul style="list-style-type: none"> <li>• <a href="#">RoHS/ELV Compliance</a> = RoHS compliant, ELV compliant</li> <li>• <a href="#">Lead Free Solder Processes</a> = Not relevant for lead free process</li> <li>• RoHS/ELV Compliance History = Always was RoHS compliant</li> <li>• VDE Tested = No</li> <li>• Agency/Standard = CSA, UL</li> <li>• UL Rating = Certified, Recognized</li> </ul> <p><b>Identification Marking:</b></p> <ul style="list-style-type: none"> <li>• Circuit Identification Feature = Without</li> </ul> <p><b>Environmental:</b></p> <ul style="list-style-type: none"> <li>• Operating Temperature (°C [°F]) = -55 - +105 [-67 - +221]</li> </ul> <p><b>Conditions for Usage:</b></p> <ul style="list-style-type: none"> <li>• Applies To = Wire/Cable</li> <li>• For Use With = Socket (Plug) Housing</li> </ul> <p><b>Operation/Application:</b></p> <ul style="list-style-type: none"> <li>• Application Use = Wire-to-Wire</li> </ul> <p><b>Packaging Features:</b></p>

- Mating Alignment Type = Polarization
- Housing Material = Nylon
- UL Flammability Rating = UL 94V-2

- Packaging Method = Package
- Packaging Quantity = 1

**Other:**

- Brand = AMP

---

### Corporate Information

- [About TE](#)
- [Investors](#)
- [News Room](#)
- [Supplier Portal](#)
- [Careers](#)
- [Terms & Conditions](#)
- [Privacy Policy](#)

### Quick Links

- [Distributor Inventory](#)
- [Product Cross Reference](#)
- [Documents & Drawings](#)
- [Product Compliance Support Center](#)
- [Site Map](#)

### Customer Support

- [Email or Chat With Us](#)
- [Find a Phone Number](#)
- [Knowledge Base](#)
- [Manage Your Account](#)

### Keep Me Informed



THIS DRAWING IS UNPUBLISHED. RELEASED FOR PUBLICATION  
 © COPYRIGHT BY TYCO ELECTRONICS CORPORATION. ALL RIGHTS RESERVED.

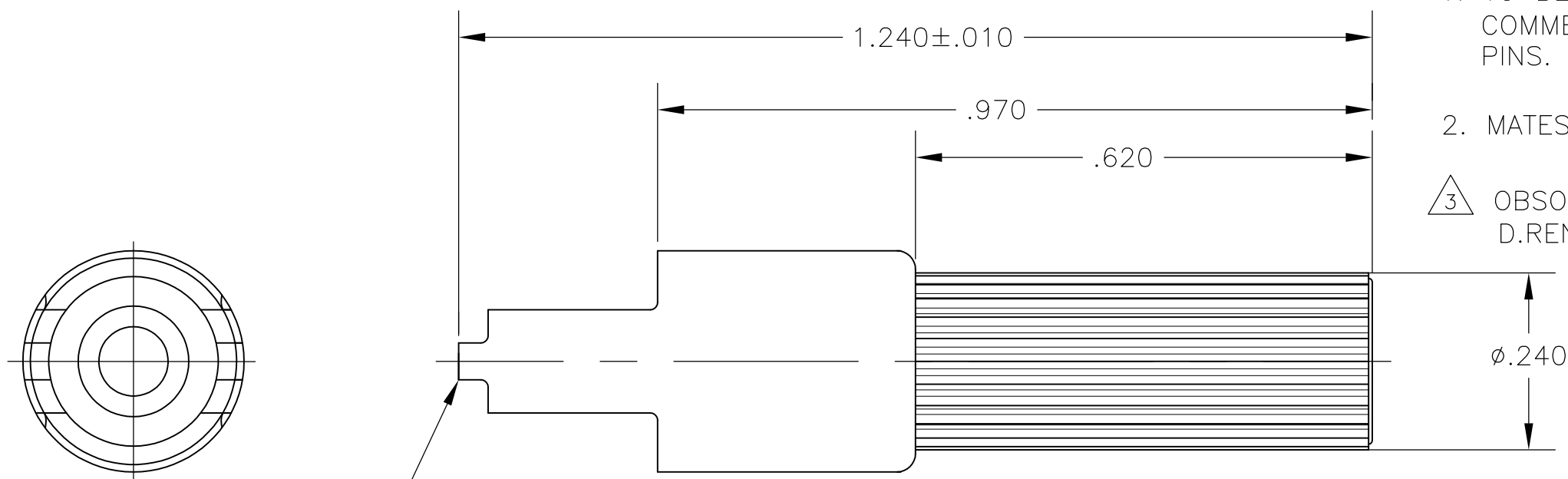
LOC CM DIST 00

REVISIONS					
P	LTR	DESCRIPTION	DATE	DWN	APVD
H1		REVISED PER ECO-06-021983	15SEP06	KW	DC
H2		REVISED PER ECO-09-021826	07SEP09	KK	AEG

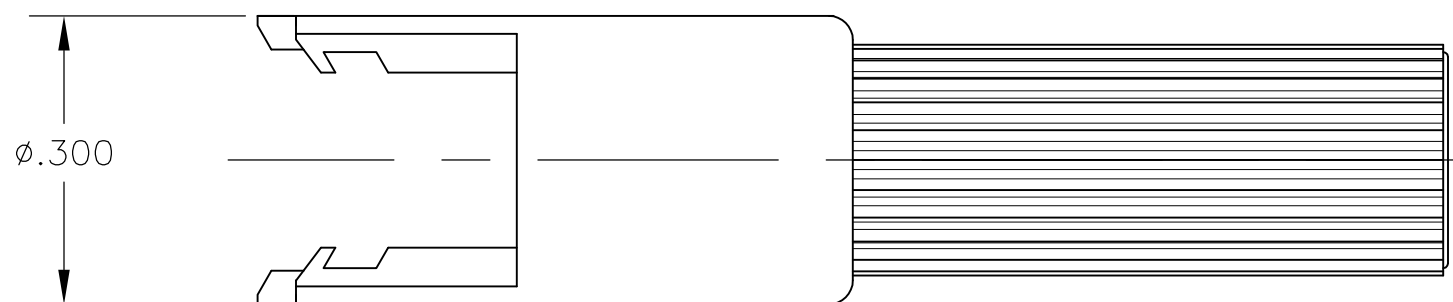
1. TO BE USED WITH APPROPRIATE COMMERCIAL MATE-N-LOK(TM) PINS.

2. MATES WITH PLUG 480349.

3 OBSOLETE PARTS: OBSOLETE CIS STREAMLINING PER D.RENAUD/D.SINISI



POSITIVE LOCK IDENTIFICATION



3	OBSOLETE	COLOR	PART NUMBER
		BLACK	<del>1-480351-9</del>
		GREEN	1-480351-5
		RED	1-480351-2
		NATURAL	1-480351-0
		COLOR	PART NUMBER

THIS DRAWING IS A CONTROLLED DOCUMENT.		DWN K. WHITAKER 15SEP2006	Tyco Electronics Corporation Harrisburg, PA 17105-3608		
DIMENSIONS: INCHES	TOLERANCES UNLESS OTHERWISE SPECIFIED:	CHK D. COLEY 15SEP2006	NAME		
	0 PLC ±	APVD D. COLEY 15SEP2006	CAP, SINGLE CIRCUIT, COMMERCIAL MATE-N-LOK(TM)		
	1 PLC ±	PRODUCT SPEC	-		
	2 PLC ±.005	APPLICATION SPEC	SIZE	CAGE CODE	DRAWING NO
	3 PLC ±				
	4 PLC ±	WEIGHT	A3 00779		C-480351
	ANGLES ± 0°30'		RESTRICTED TO		
MATERIAL NYLON,94V-2	FINISH -	CUSTOMER DRAWING		SCALE 5:1	SHEET 1 OF 1
				REV H2	