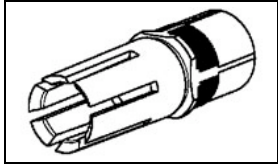


## 148375-1 Product Details



**148375-1**

TE Internal Number: 148375-1



### Eurocard Contacts

 Always EU RoHS/ELV Compliant (Statement of Compliance)

### Product Highlights:

- Eurocard Product Line
- Contact Type = Socket
- Contact Angle = Straight
- Applies To Printed Circuit Board
- Contact Configuration = High Current Power Contact

### Documentation & Additional Information

#### Product Drawings:

- [POWER CONTACT, FEMALE BOARD MOUNT, SOLDER](#) (PDF, English)

#### Catalog Pages/Data Sheets:

- None Available

#### Product Specifications:

- None Available

#### Application Specifications:

- [Eurocard Connectors Types B,C,M,Q,R, & Enhanced Typ...](#) (PDF, English)

#### Instruction Sheets:

- [Printed Circuit \(PC\) Board Power Contacts 148375-1, ...](#) (PDF, English)

#### CAD Files: (CAD Format & Compression Information)

- [2D Drawing](#) (DXF, Version A)
- [3D Model](#) (IGES, Version A)
- [3D Model](#) (STEP, Version A)

#### Additional Information:

- [Product Line Information](#)

#### Related Products:

- [Tooling](#)

### Product Features (Please use the Product Drawing for all design activity)

#### Product Type Features:

- Product Line = Eurocard
- [Make First / Break Last](#) = No
- [DIN Level](#) = II
- [Used For](#) = Type M Connector

#### Electrical Characteristics:

- [Contact - Rated Current \(A\)](#) = 40

#### Termination Features:

- [Solder Tail Contact Plating](#) = Gold over Nickel

#### Body Features:

- [Retaining Ring Material](#) = Copper Alloy

#### Contact Features:

- [Contact Type](#) = Socket
- [Contact Angle](#) = Straight
- [Contact Configuration](#) = High Current Power Contact
- [Contact Base Material](#) = Copper Alloy

#### Industry Standards:

- [RoHS/ELV Compliance](#) = RoHS compliant, ELV compliant
- [Lead Free Solder Processes](#) = Wave solder capable to 260°C, Wave solder capable to 240°C, Wave solder capable to 265°C, Reflow solder capable to 245°C, Reflow solder capable to 260°C, Pin-in-Paste capable to 245°C, Pin-in-Paste capable to 260°C
- [RoHS/ELV Compliance History](#) = Always was RoHS compliant

#### Conditions for Usage:

- [Applies To](#) = Printed Circuit Board

#### Packaging Features:

- [Packaging Method](#) = Loose Piece

#### Other:

- [Brand](#) = AMP

THIS DRAWING IS UNPUBLISHED.

RELEASED FOR PUBLICATION

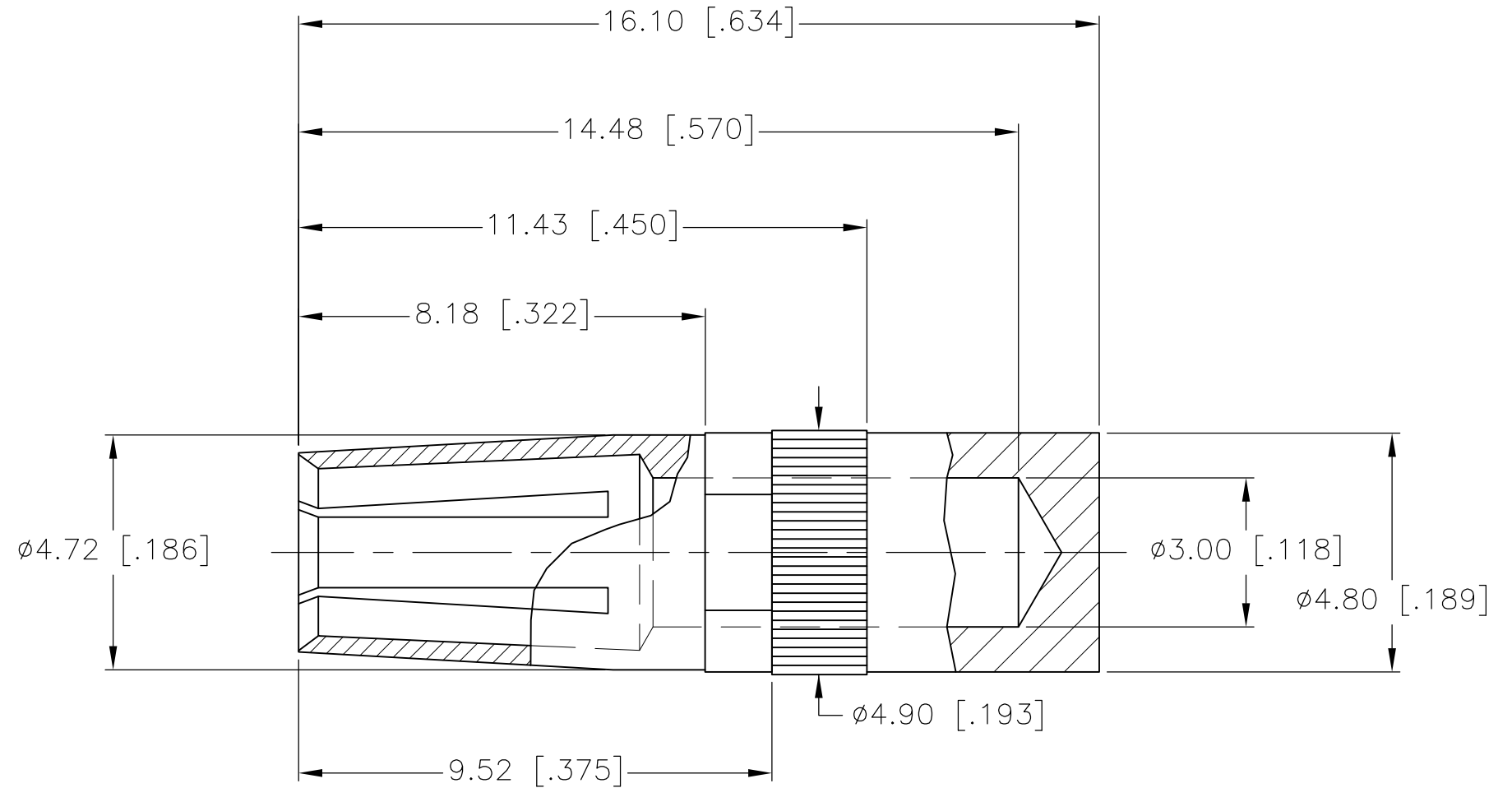
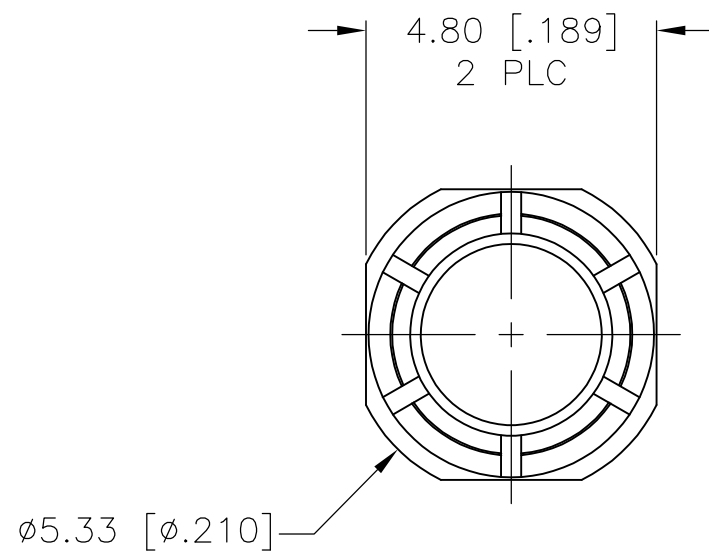
---

LOC AD DIST 00

REVISIONS

© COPYRIGHT - BY TYCO ELECTRONICS CORPORATION. ALL RIGHTS RESERVED.

P	LTR	DESCRIPTION	DATE	DWN	APVD
	A	REV PER EC 0S12-0450-04	13JAN05	BC	RP
	A1	REVISED PER ECO-09-023313	12OCT09	KK	AEG



1 CONTACT: BERYLLIUM COPPER

2 OBSOLETE PARTS: OBSOLETE CIS STREAMLINING PER D.RENAUD/D.SINISI

2	OBSOLETE	1.27µm [0.000050] MIN GOLD	1	<del>148375-2</del>
		0.76µm [0.000030] MIN GOLD	1	148375-1
		FINISH	MATERIAL	PART NUMBER

THIS DRAWING IS A CONTROLLED DOCUMENT.		DWN L. BRINER 3/3/97	Tyco Electronics Corporation Harrisburg, Pa 17105-3608	
DIMENSIONS: mm	TOLERANCES UNLESS OTHERWISE SPECIFIED:	CHK R. PATTERSON 3/3/97	NAME	
	0 PLC ± - 1 PLC ± - 2 PLC ± 0.13 [0.005] 3 PLC ± - 4 PLC ± - ANGLES ± -	APVD R. PATTERSON 3/3/97	POWER CONTACT, FEMALE BOARD MOUNT, SOLDER	
MATERIAL 1	FINISH SEE TABLE	PRODUCT SPEC -	SIZE A3	CAGE CODE 00779
		APPLICATION SPEC -	DRAWING NO C-148375	RESTRICTED TO -
		WEIGHT -	CUSTOMER DRAWING	
			SCALE 4:1	SHEET 1 OF 1
				REV A1