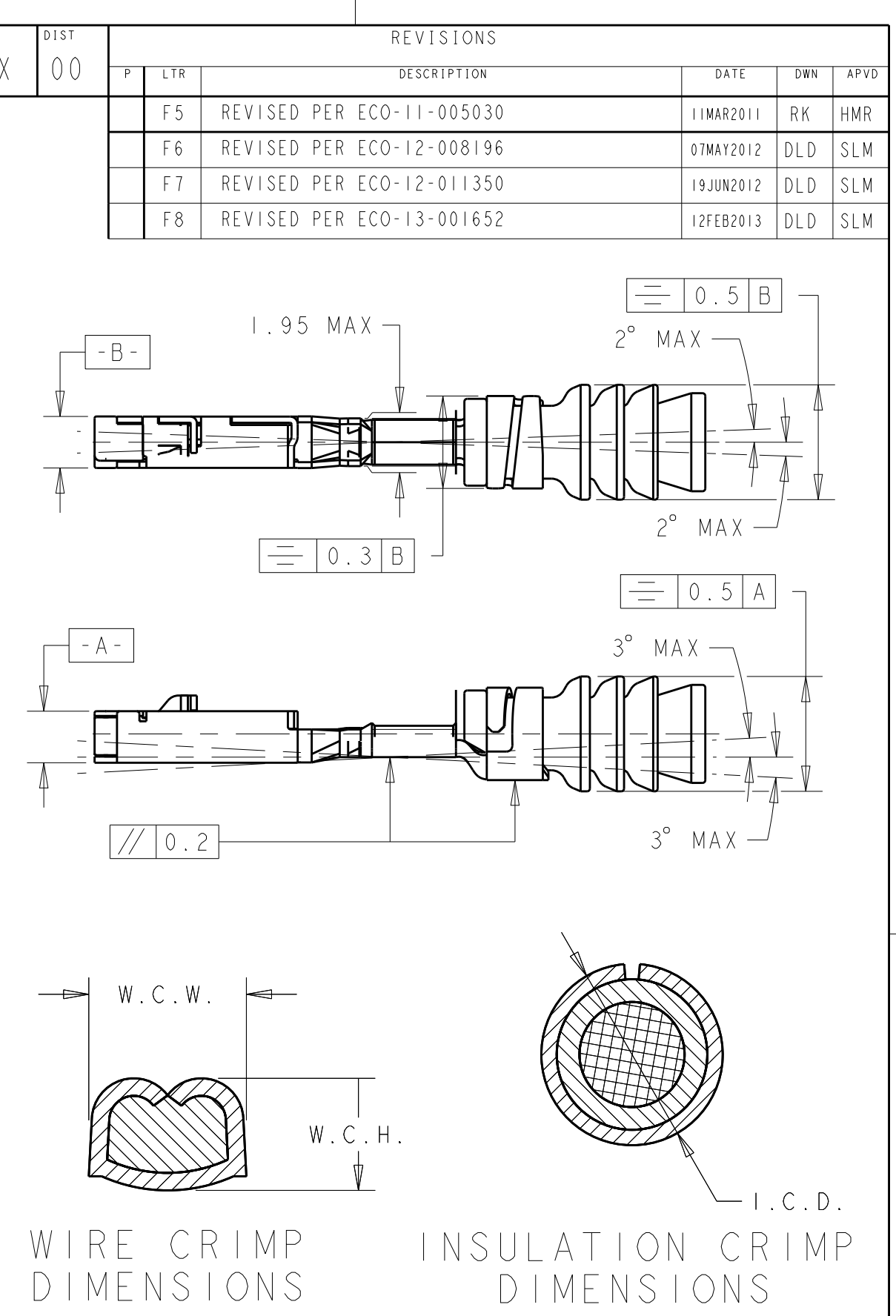
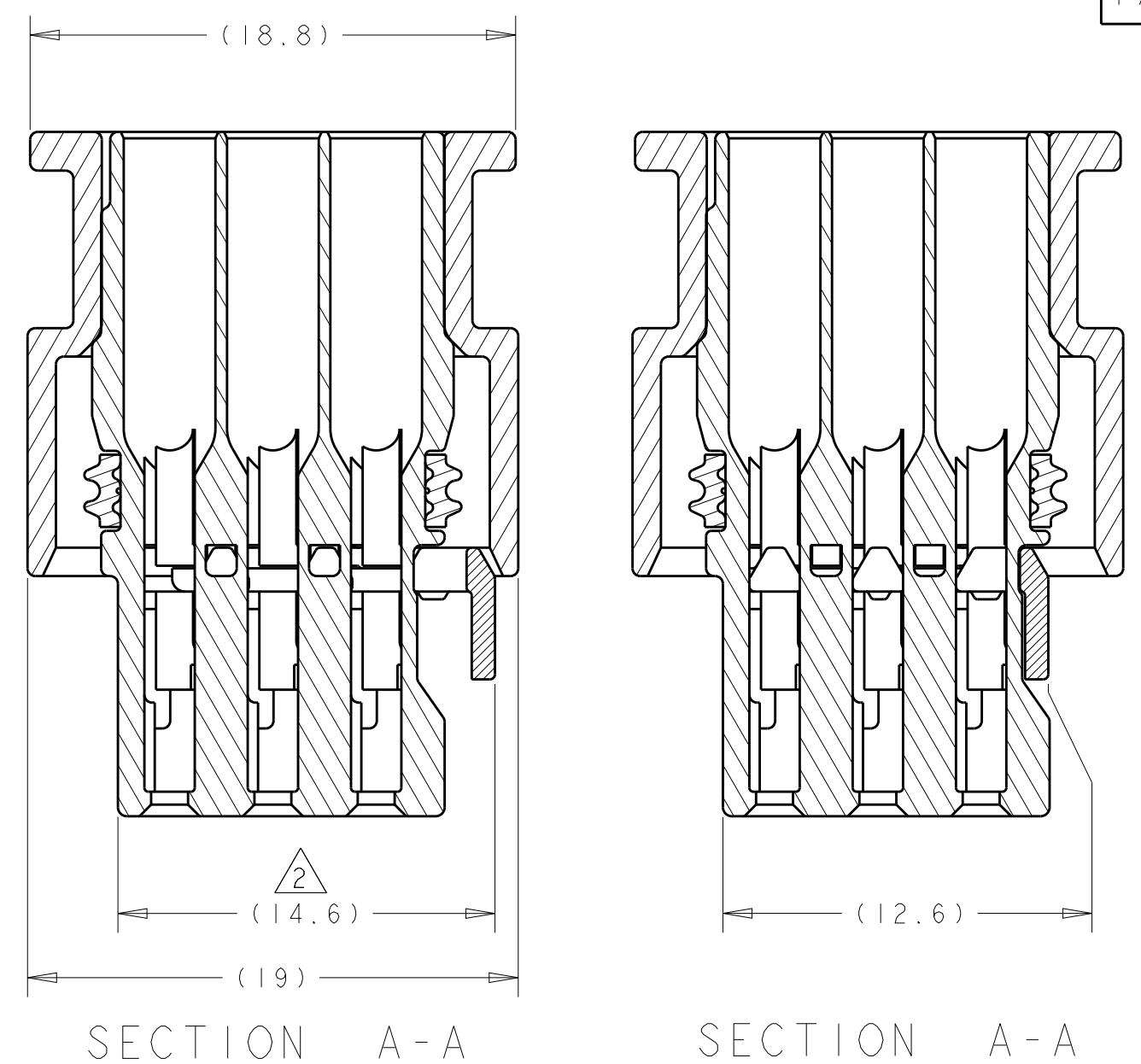
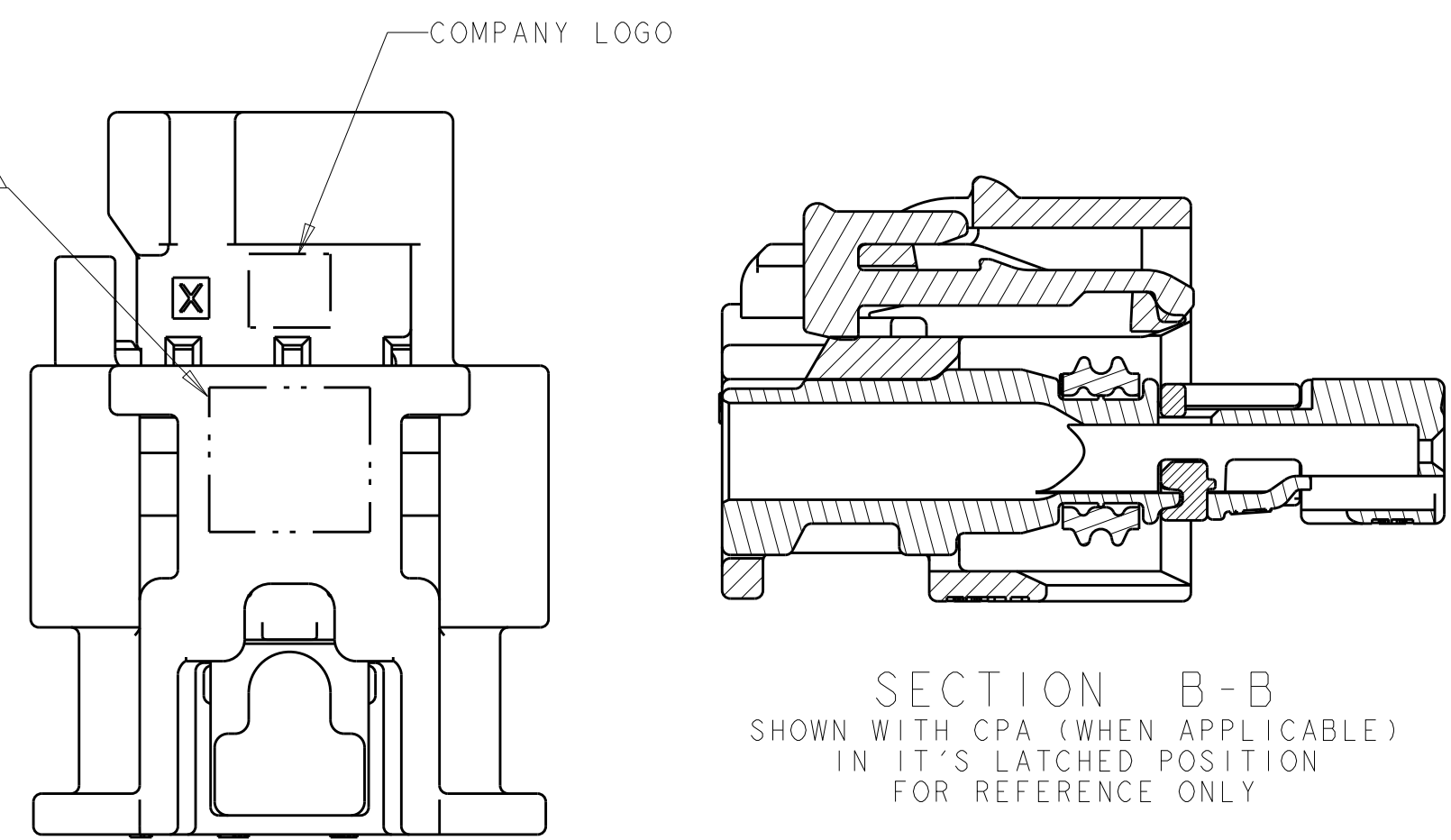
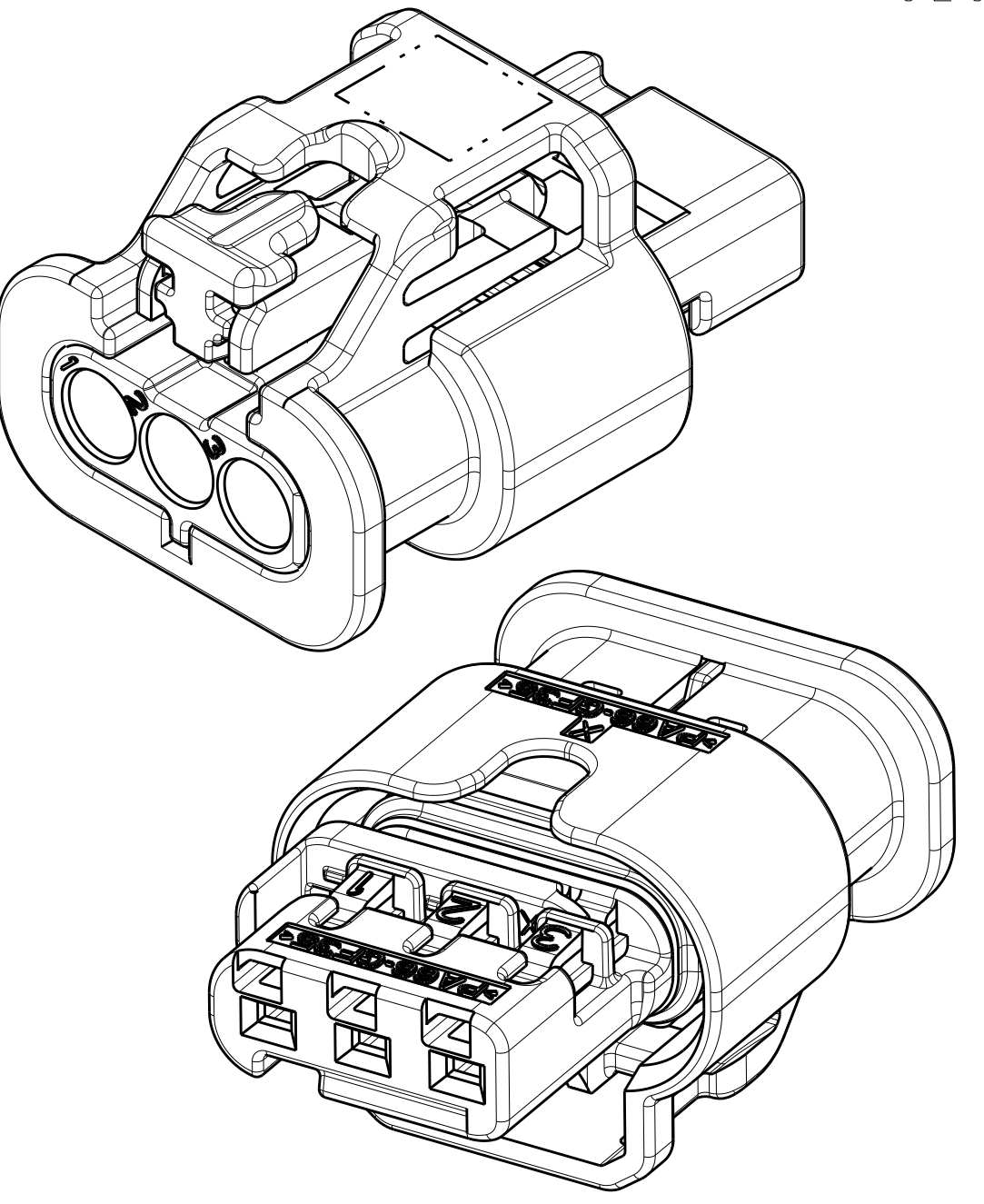
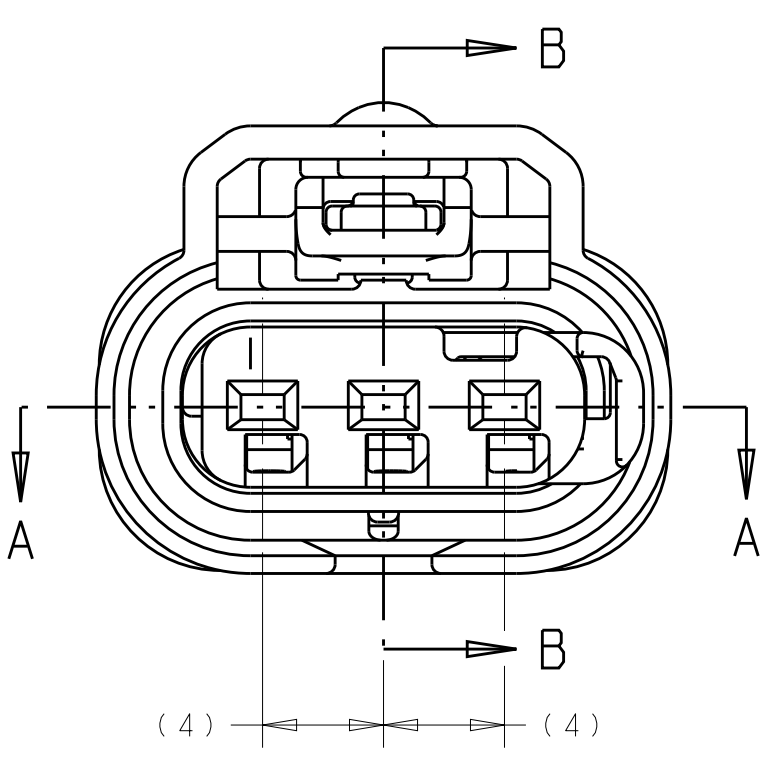
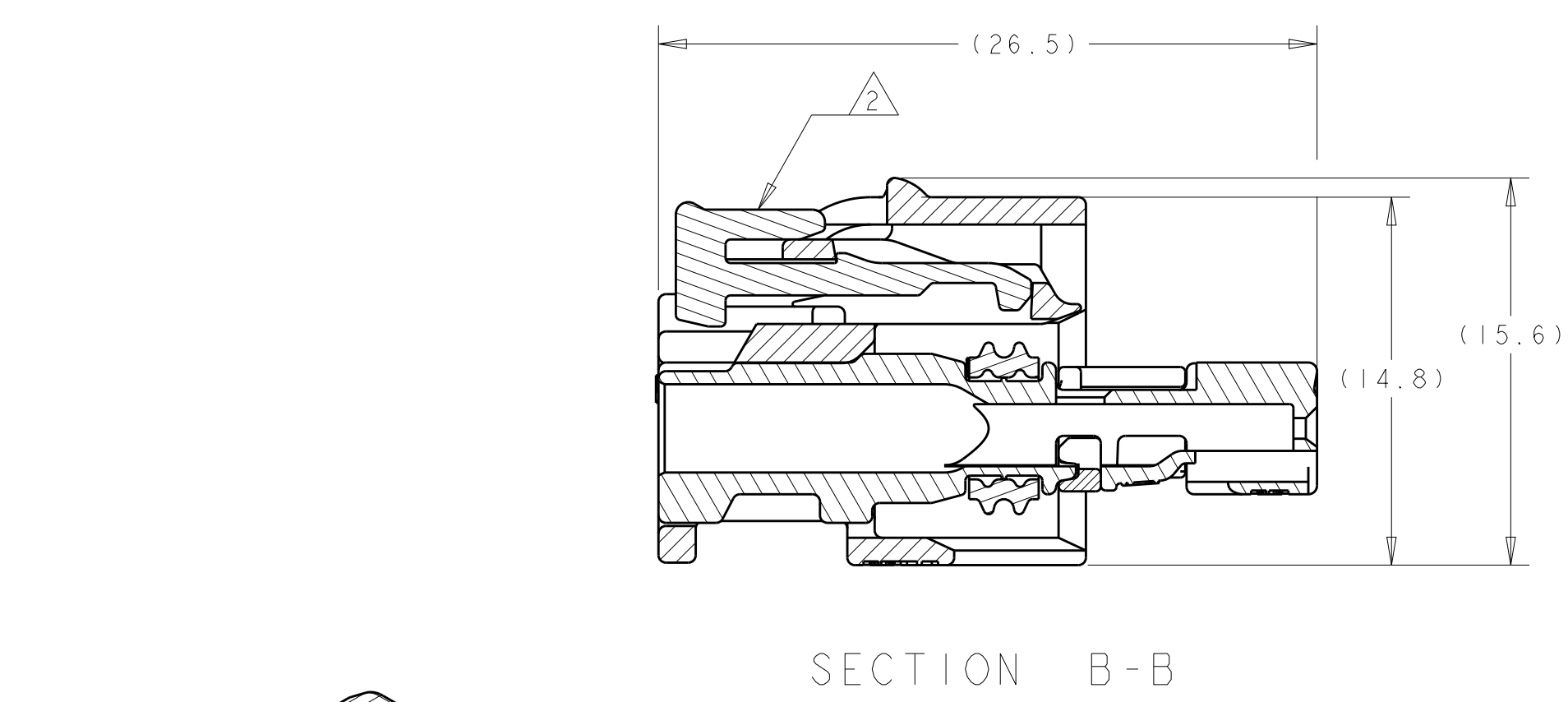


- PART NUMBER 1488991-5 SHOWN ON DRAWING.
- TPA AND CPA (WHEN APPLICABLE) ARE SHIPPED IN THEIR PRE-LATCHED POSITIONS. SEE INSTRUCTION SHEET 408-8928 FOR DIRECTIONS ON MOVING THE CPA AND TPA TO THE PRE-LATCHED POSITION, IF NECESSARY.
- TERMINALS SOLD SEPARATELY. FOR USE WITH TE CONNECTIVITY MCON 1.2mm CLEAN BODY CONTACT WITH WIRE SEAL. SEE MCON 1.2-CB (CLEAN BODY) TABLE FOR APPLICABLE PART NUMBERS.
- APPLICABLE HEADER INTERFACE DRAWING 1488738 IS AVAILABLE UPON REQUEST. A COPY OF THIS DRAWING CAN BE OBTAINED FROM THE TE CONNECTIVITY PRODUCT MANAGER, VIA YOUR TE CONNECTIVITY SALES REPRESENTATIVE OR CUSTOMER SERVICE.
- MINIMUM FEED THROUGH CONDITION WITH 0.5mm CLEARANCE ALL AROUND.
- A "X" IN THIS TABLE INDICATES THAT THE TERMINAL CAVITY IS BLOCKED AND WILL NOT ALLOW INSERTION OF THE MATING TERMINAL. A "O" IN THIS TABLE INDICATES THAT THE TERMINAL CAVITY IS OPEN AND WILL ALLOW INSERTION OF THE MATING TERMINAL.
- TRACEABILITY PRINTED IN THIS LOCATION AT ASSEMBLY.
- CONNECTOR SYSTEM MEETS THE REQUIREMENTS OF USCAR-2, REVISION 3, EXCEPT WHERE NOTED:
TPA ENGAGE FORCE IS 11N MIN.
PRIMARY TERMINAL-CONNECTOR FORCE IS 30N MIN.
SECONDARY TERMINAL-CONNECTOR FORCE IS 75N MIN.
- FOR OPTIONAL TERMINAL CAVITY BLOCKING, USE TE CONNECTIVITY BLIND PLUG PART NUMBER: 967056-1.
- TERMINAL 1670146-X REPLACES 1418847-X
- REFERENCE ISOMETRIC VIEWS ON SHEET 2.



LOC	DIST	REV	DESCRIPTION	DATE	BY	CHK	APPD
FX	00	F5	REVISED PER ECO-11-005030	11MAR2011	RK	HMR	
		F6	REVISED PER ECO-12-008196	07MAY2012	DLD	SLM	
		F7	REVISED PER ECO-12-011350	19JUN2012	DLD	SLM	
		F8	REVISED PER ECO-13-001652	12FEB2013	DLD	SLM	

KEYING CONFIGURATIONS	TERMINAL CAVITY CONFIGURATIONS
KEYING OPTION A	ALL TERMINAL CAVITIES OPEN
KEYING OPTION B	TERMINAL CAVITY #3 CLOSED
KEYING OPTION C	TERMINAL CAVITY #2 CLOSED
KEYING OPTION D	TERMINAL CAVITY #1 CLOSED



MCON 1.2-CB (CLEAN BODY)								
PART NUMBER	PLATING	WIRE STRIP LENGTH	AWG	INSL. RANGE	W.C.H.	W.C.W.	I.C.D.	WIRE SEAL PART NUMBER
1418844-3	SILVER	3.3 ± 0.3	22	1.2 TO 1.4	0.86 ± 0.03	1.27 ± 0.05	3.15 ± 0.05	967067-2
1418844-2	GOLD							
1418844-1	TIN							
1670146-3	SILVER	3.6 ± 0.3	20	1.4 TO 1.9	0.84 ± 0.03	1.57 ± 0.05	3.25 ± 0.05	967067-1
1670146-2	GOLD							
1670146-1	TIN							
1418850-3	SILVER	3.6 ± 0.3	18 TO 16	1.9 TO 2.4	1.11 ± 0.05	1.31 ± 0.05	1.78 ± 0.05	964972-1
1418850-2	GOLD							
1418850-1	TIN							

STATUS	CPA	INNER HOUSING	TERMINAL CAVITY CONFIGURATION	PART NUMBER
RELEASED				4-1488991-4
RELEASED				4-1488991-3
RELEASED				4-1488991-2
RELEASED				4-1488991-1
NOT RELEASED				3-1488991-2
NOT RELEASED				3-1488991-1
NOT RELEASED				3-1488991-0
RELEASED				2-1488991-9
RELEASED				2-1488991-8
NOT RELEASED				2-1488991-7
NOT RELEASED				2-1488991-6
RELEASED				2-1488991-5
NOT RELEASED				2-1488991-4
NOT RELEASED				2-1488991-3
NOT RELEASED				2-1488991-2
NOT RELEASED				2-1488991-1
NOT RELEASED				2-1488991-0
NOT RELEASED				1-1488991-9
NOT RELEASED				1-1488991-8
NOT RELEASED				1-1488991-7
NOT RELEASED				1-1488991-6
NOT RELEASED				1-1488991-5
NOT RELEASED				1-1488991-4
NOT RELEASED				1-1488991-3
NOT RELEASED				1-1488991-2
NOT RELEASED				1-1488991-1
NOT RELEASED				1-1488991-0
RELEASED				1488991-9
RELEASED				1488991-8
RELEASED				1488991-7
RELEASED				1488991-6
RELEASED				1488991-5
RELEASED				1488991-4
RELEASED				1488991-3
RELEASED				1488991-2
RELEASED				1488991-1

THIS DRAWING IS A CONTROLLED DOCUMENT.

OWN: M. FORLSKA 08MAR2004
CHK: G. MARTIN 08MAR2004
APPD: G. MARTIN 08MAR2004

TE Connectivity

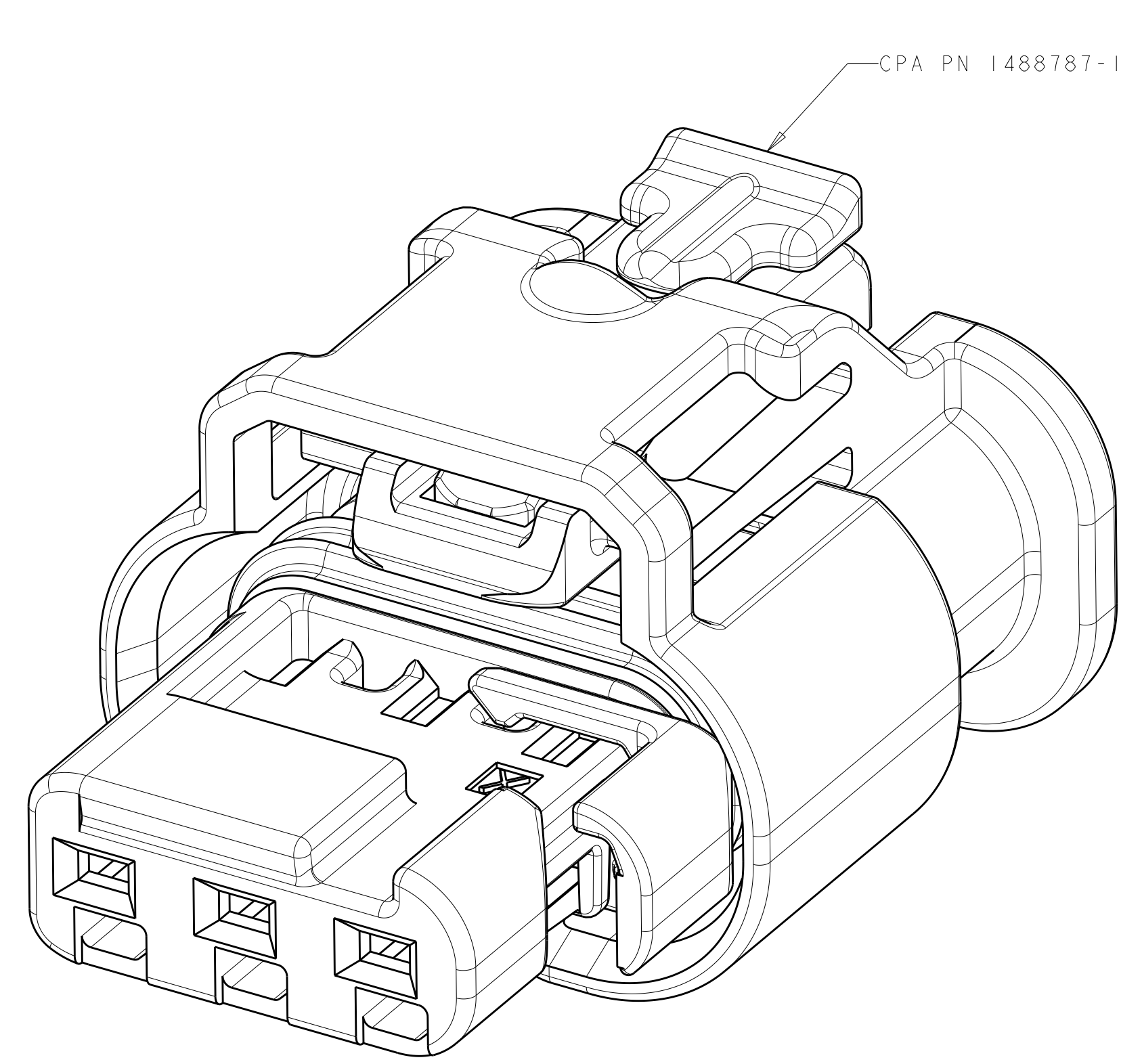
CONNECTOR ASSEMBLY, FEMALE, 3 POSITION, SEALED, 1.2mm (STANDARD LATCH VERSION)

IS 408-8928
WEIGHT: 3.0 GRAMS
CUSTOMER DRAWING

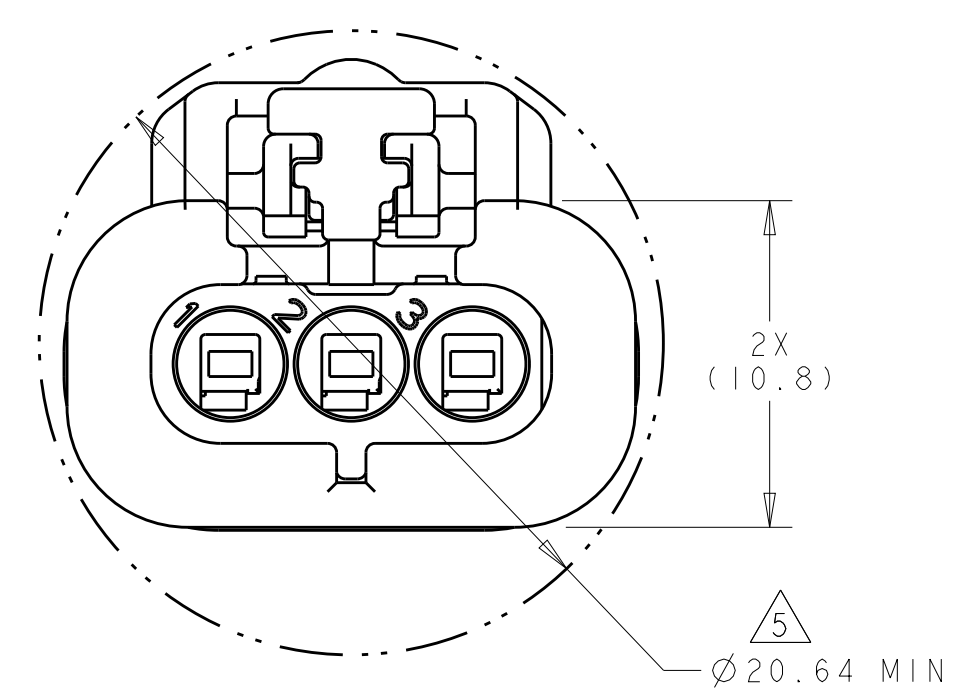
SCALE: 4:1 SHEET 1 OF 2 REV F8

LOC	DIST	REVISIONS			
P	LTN	DESCRIPTION	DATE	DMN	APVD
FX	00	SEE SHEET 1	-	-	-

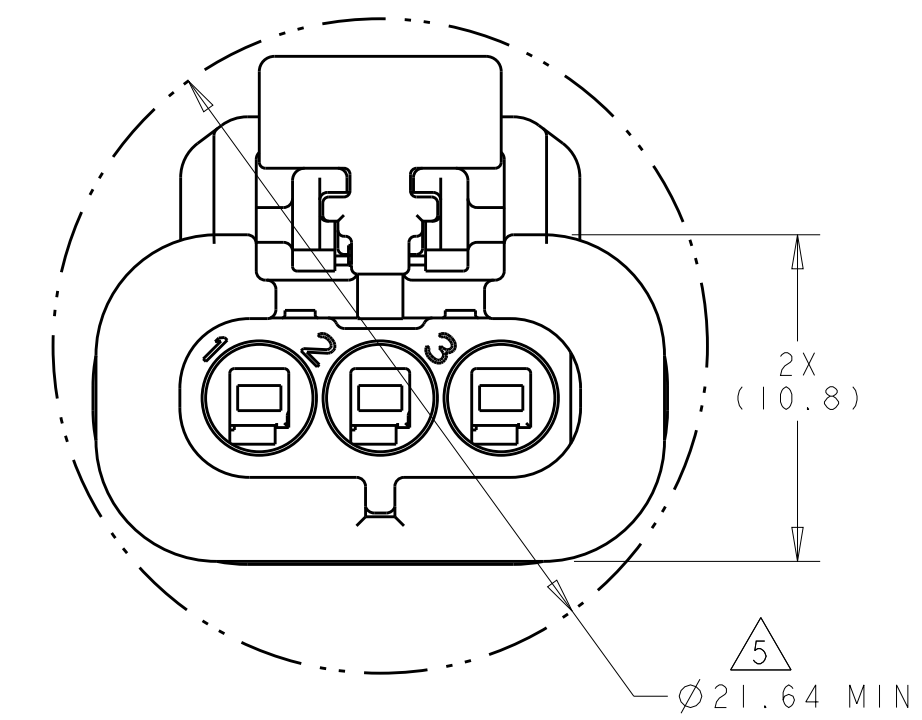
ISOMETRIC VIEWS



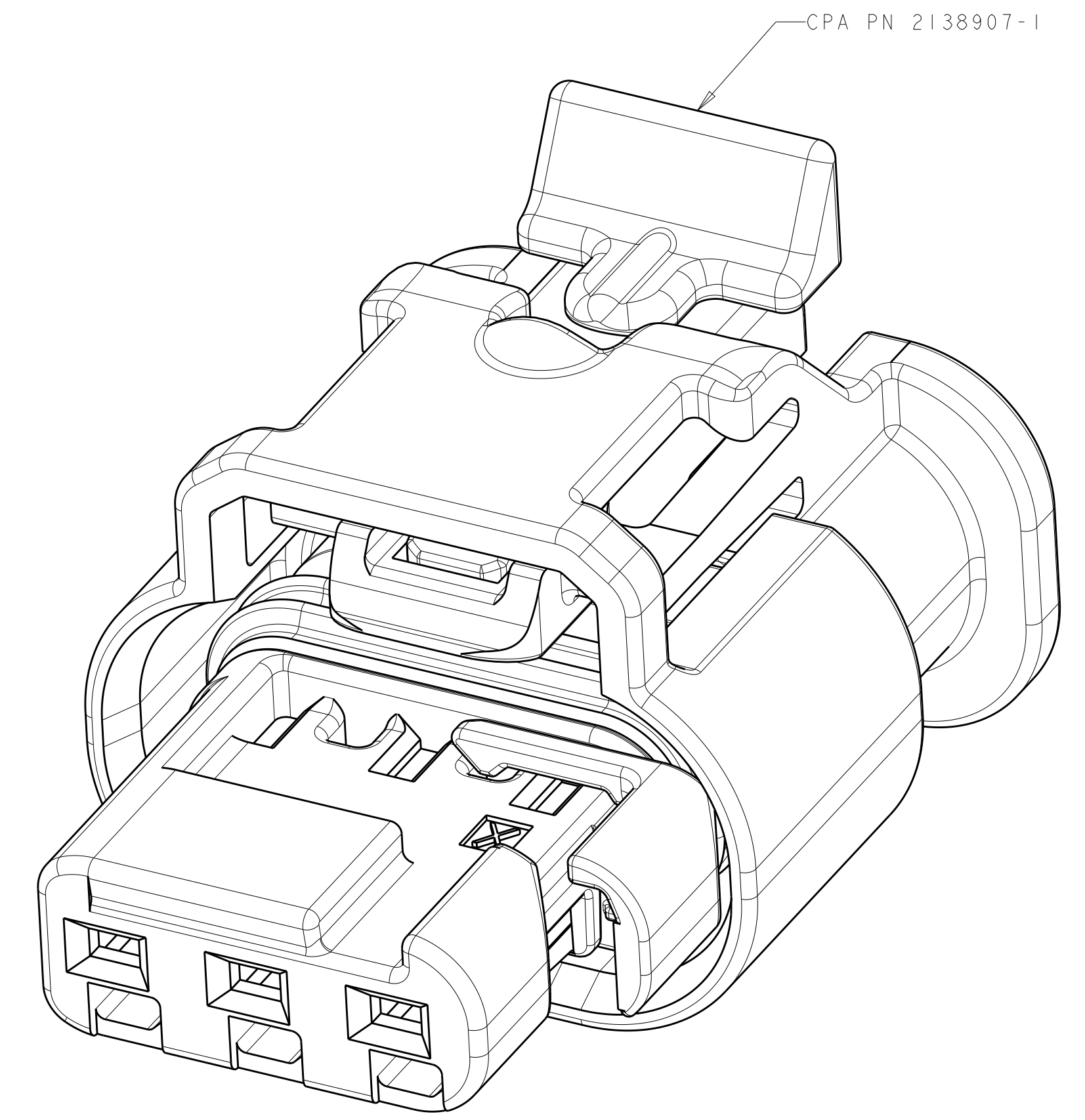
PN 1488991-5 SHOWN
SCALE 8:1



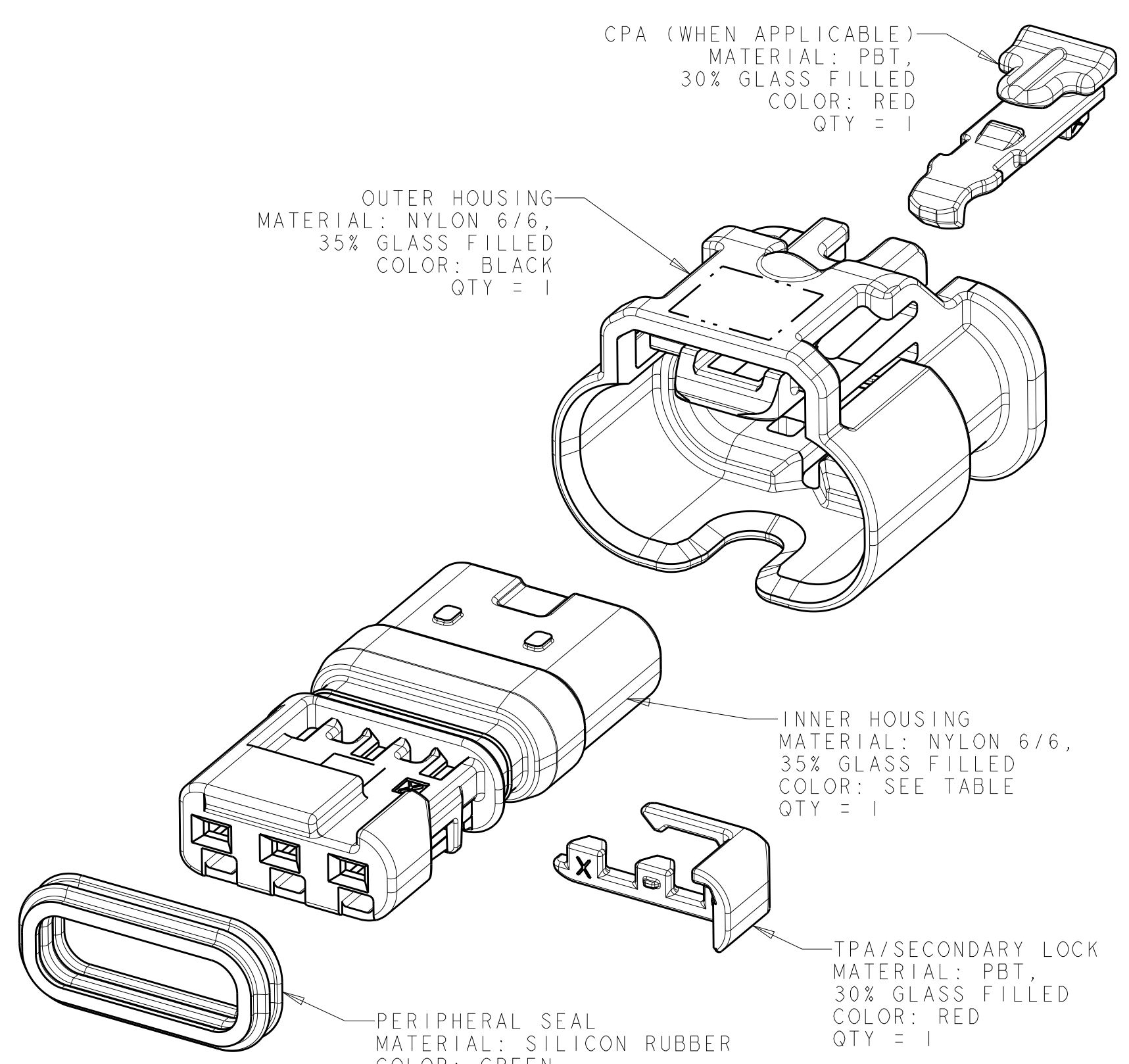
FEED THROUGH CONDITION



FEED THROUGH CONDITION



PN 4-1488991-1 SHOWN
SCALE 8:1



- CPA (WHEN APPLICABLE)
MATERIAL: PBT,
30% GLASS FILLED
COLOR: RED
QTY = 1
- OUTER HOUSING
MATERIAL: NYLON 6/6,
35% GLASS FILLED
COLOR: BLACK
QTY = 1
- INNER HOUSING
MATERIAL: NYLON 6/6,
35% GLASS FILLED
COLOR: SEE TABLE
QTY = 1
- TPA/SECONDARY LOCK
MATERIAL: PBT,
30% GLASS FILLED
COLOR: RED
QTY = 1
- PERIPHERAL SEAL
MATERIAL: SILICON RUBBER
COLOR: GREEN
QTY = 1

EXPLODED ISOMETRIC VIEW

THIS DRAWING IS A CONTROLLED DOCUMENT.		DMN M. FORISKA 08MAR2004	TE Connectivity
DIMENSIONS:		CHK G. MARTIN 08MAR2004	
mm	TOLERANCES UNLESS OTHERWISE SPECIFIED:	APVD G. MARTIN 08MAR2004	NAME CONNECTOR ASSEMBLY, FEMALE, 3 POSITION, SEALED, 1.2mm (STANDARD LATCH VERSION)
0 PLC	±	PRODUCT SPEC	SIZE IS 408-8928
1 PLC	±0.3	APPLICATION SPEC	RESTRICTED TO
2 PLC	±0.10	WEIGHT 3.0 GRAMS	A100779C=1488991
3 PLC	±	CUSTOMER DRAWING	SCALE 4:1 SHEET 2 OF 2 REV F8
4 PLC	±		
ANGLES	±1°		
MATERIAL	FINISH		
SEE TABLE			