

Distributed by:

**JAMECO**<sup>®</sup>  
ELECTRONICS

**www.Jameco.com ♦ 1-800-831-4242**

The content and copyrights of the attached  
material are the property of its owner.

Jameco Part Number 745707

4

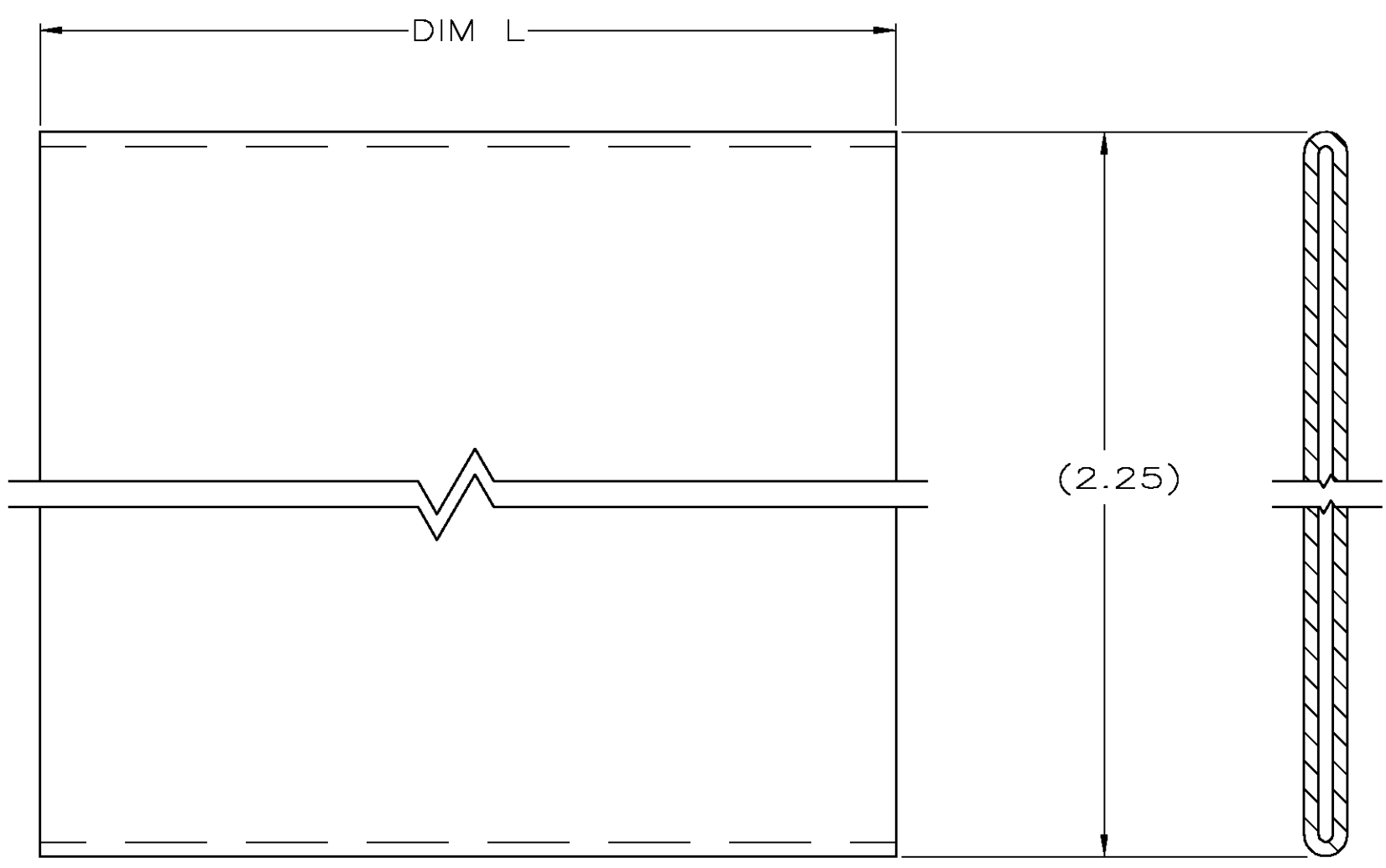
3

2

1

THIS DRAWING IS UNPUBLISHED. RELEASED FOR PUBLICATION  
 © COPYRIGHT BY TYCO ELECTRONICS CORPORATION. ALL RIGHTS RESERVED.

LOC	DIST	REVISIONS			
P	LTR	DESCRIPTION	DATE	DWN	APVD
GP	00	0	RELEASED PER EC OS13-0622-04	1JUNE05	RR JG



2.80±.20	60 POSN CONN	1-5088450-1
2.32±.18	50 POSN CONN	1-5088450-0
1.82±.18	40 POSN CONN	5088450-9
1.58±.12	34 POSN CONN	5088450-8
1.18±.12	26 POSN CONN	5088450-7
.88±.12	20 POSN CONN	5088450-5
.74±.06	16 POSN CONN	5088450-4
.64±.06	14 POSN CONN	5088450-3
.44±.06	10 POSN CONN	5088450-2
120.00±2.00	-	5088450-1

L	USED WITH	PART NUMBER

① PVC LAY FLAT TUBING 94V-1 RATED, COLOR NATURAL.

THIS DRAWING IS A CONTROLLED DOCUMENT.		DWN R.RICHARDSON 1JUNE05	Tyco Electronics Corporation Harrisburg, Pa 17105-3608	
DIMENSIONS: INCHES		CHK C.ROHDE 1JUNE05		
TOLERANCES UNLESS OTHERWISE SPECIFIED:		APVD M.WALMSLEY 1JUNE05	NAME PULL LOOP, AMP-LATCH	
0 PLC ± - 1 PLC ± - 2 PLC ± - 3 PLC ± - 4 PLC ± - ANGLES ± -		PRODUCT SPEC -	-	
MATERIAL ①		FINISH -	APPLICATION SPEC -	RESTRICTED TO -
		WEIGHT -	SIZE A3	CAGE CODE 00779
		CUSTOMER DRAWING	DRAWING NO C-5088450	REV 0
			SCALE 10:1	SHEET 1 OF 1