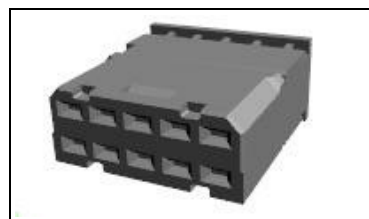




1534181-1 Product Details

[Share](#) [Print](#) [Email](#)


1534181-1

TE Internal Number: 1534181-1



Active

[View 3D PDF](#)

Multiple Contact Point (MCP) & MCON Contact Systems

Always EU RoHS/ELV Compliant (Statement of Compliance)

Product Highlights:

- Multiple Contact Point (MCP) Product Line
- Wire-to-Wire
- Applies To Wire/Cable
- Connector
- Housing

[View all Features](#)

Quick Links

- ▶ [Pricing & Availability](#)
- ▶ [Search for Tooling](#)
- ▶ [Product Feature Selector](#)
- ▶ [Contact Us About This Product](#)

[Add to My Part List](#) [Request Sample](#) [Find Similar Products](#) [Buy Product](#)

Documentation & Additional Information

Product Drawings:

- [REC. HOUSING 10POSN., 1.5MM MCP Buchsengehaeuse 10po...](#) (PDF, English)

Catalog Pages/Data Sheets:

- None Available

Product Specifications:

- [PRODUCT SPECIFICATION FOR 32/38POSN. RECEPTACLE HOUS...](#) (PDF, English)
- [PRODUCT SPECIFICATION FOR 32/38POSN. RECEPTACLE HOUS...](#) (PDF, German)

Application Specifications:

- [32/38POSN. SOCKET HOUSING FOR AMPLIFIER-BOSE SOUND SYSTE](#) (PDF, German)

Instruction Sheets:

- None Available

CAD Files: (CAD Format & Compression Information)

- [2D Drawing](#) (DXF, Version B1)
- [3D Model](#) (IGES, Version B1)
- [3D Model](#) (STEP, Version B1)

Related Products:

- [Tooling](#)

[List all Documents](#)

Feedback

Product Features (Please use the Product Drawing for all design activity)

Product Type Features:

- Product Line = Multiple Contact Point (MCP)
- Product Type = Connector
- Connector Type = Housing
- [Wire/Cable Type](#) = FLR (Thin Walled Cable)
- Key Type = Standard
- Sealed = No

Mechanical Attachment:

- Contact Retention = Without
- Mating Retention Type = Latching

Termination Features:

- Termination Method to Wire/Cable = Crimp

Dimensions:

- Mating Area Interface Dimensions (mm [in]) = 1.50 [.059]

Body Features:

- Cable Exit Angle = 180°
- Mating Retention = With
- Wire Type = Stranded
- Used With = 32 Position Connector

Contact Features:

- Contact Type = Socket

Housing Features:

Configuration Features:

- Number of Positions = 10
- Number of Rows = 2

Industry Standards:

- [RoHS/ELV Compliance](#) = RoHS compliant, ELV compliant
- [Lead Free Solder Processes](#) = Not relevant for lead free process
- RoHS/ELV Compliance History = Always was RoHS compliant

Identification Marking:

- Keying = A

Conditions for Usage:

- Applies To = Wire/Cable

Operation/Application:

- Application Use = Wire-to-Wire

Packaging Features:

- Packaging Method = Box/Carton
- Packaging Quantity = 1,000

Other:

- Brand = AMP
- Comment = Use in combination with 22 position receptacle P/Ns 1534180-1 and 1534180-2.

- Connector Style = Receptacle
- Housing Material = PBT - GF
- Housing Color = Black
- Mating Alignment = With
- Mating Alignment Type = Keyed

Corporate Information

[About TE](#)
[Investors](#)
[News Room](#)
[Supplier Portal](#)
[Careers](#)
[Terms & Conditions](#)
[Privacy Policy](#)
[AODA Accessibility Policy](#)
[AODA Multi-Year Accessibility Plan](#)

Quick Links

[Distributor Inventory](#)
[Product Cross Reference](#)
[Documents & Drawings](#)
[Product Compliance Support Center](#)
[Site Map](#)

Customer Support

[Email or Chat With Us](#)
[Find a Phone Number](#)
[Knowledge Base](#)
[Manage Your Account](#)

Keep Me Informed

