

1546148-1 Product Details

[Share](#) [Print](#) [Email](#)



1546148-1

TE Internal Number: 1546148-1

Active

[View 3D PDF](#)

NEMA Terminal Blocks

Always EU RoHS/ELV Compliant (Statement of Compliance)

Product Highlights:

- 900 Series Block Series
- NEMA Product Line
- Block Type = Dovetail Base
- Contact Configuration = Tubular Screw
- Medium Duty Application

[View all Features](#)

Quick Links

- ▶ [Pricing & Availability](#)
- ▶ [Search for Tooling](#)
- ▶ [Product Feature Selector](#)
- ▶ [Contact Us About This Product](#)

[Add to My Part List](#) [Request Sample](#) [Find Similar Products](#) [Buy Product](#)

Documentation & Additional Information

Product Drawings:

- [ASSEMBLY, TERMINAL BLOCK, NEMA, DOVETAIL BASE, MEDIU...](#) (PDF, English)

Catalog Pages/Data Sheets:

- [BUCHANAN TERMINAL BLOCKS CATALOG - NEMA TERMINAL BLOCKS](#) (PDF, English)

Product Specifications:

- None Available

Application Specifications:

- None Available

Instruction Sheets:

- None Available

CAD Files: [\(CAD Format & Compression Information\)](#)

- [2D Drawing](#) (DXF, Version F)
- [3D Model](#) (IGES, Version F)
- [3D Model](#) (STEP, Version F)

[List all Documents](#)

Additional Information:

- [Product Line Information](#)

Related Products:

- [Tooling](#)

Product Features (Please use the Product Drawing for all design activity)

Product Type Features:

- [Block Series](#) = 900 Series
- Product Line = NEMA
- [Block Type](#) = Dovetail Base
- Screw Size = 10-32

Electrical Characteristics:

- Voltage Rating (VAC) = 600
- Amperes (A) = 55.0

Body Features:

- Mount Style = Channel Mount (Dovetail Base)
- [Wire Range \(Solid and Stranded\)\[MCM\] \(AWG\)](#) = 22-8
- [Blown Fuse Indicator](#) = Without
- [Blown Fuse Indicator Type](#) = None
- Screw Material = Steel, Zinc Plated, Clear Chromate
- Torque = 8 in-lbs

Contact Features:

- Contact Configuration = Tubular Screw
- Pitch (mm [in]) = 9.53 [0.375]
- Contact Base Material = Copper Alloy
- Contact Plating = Zinc

Housing Features:

- [Housing Material](#) = Polyester
- UL Flammability Rating = UL 94V-0
- Housing Color = Gray

Industry Standards:

- [RoHS/ELV Compliance](#) = RoHS compliant, ELV compliant
- [Lead Free Solder Processes](#) = Not relevant for lead free process
- RoHS/ELV Compliance History = Always was RoHS compliant

Conditions for Usage:

- Temperature, Max. (°C) = 150

Operation/Application:

- Application = Medium Duty

Other:

- Brand = Buchanan

Corporate Information

[About TE](#)
[Investors](#)
[News Room](#)

Quick Links

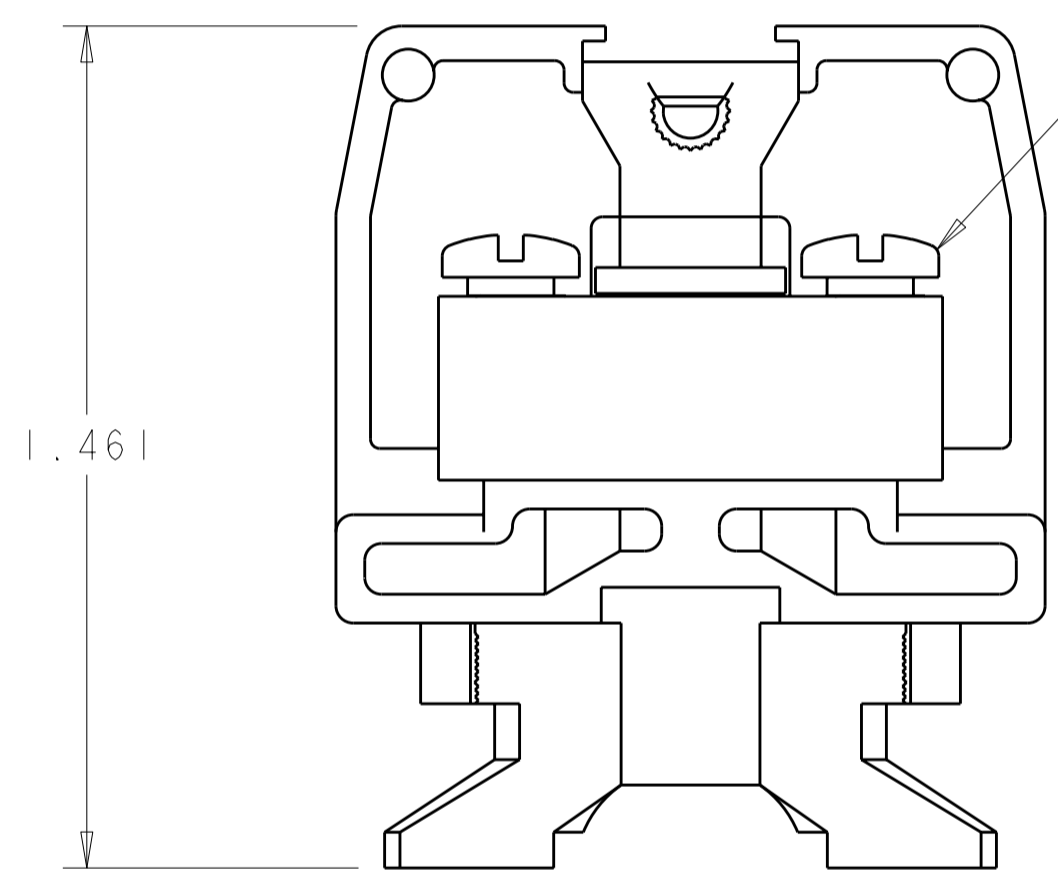
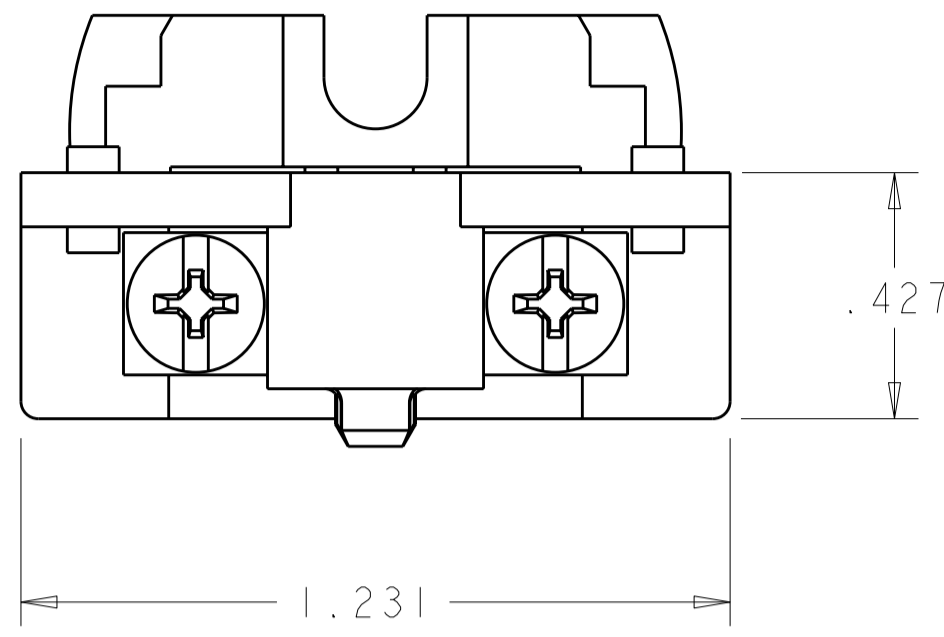
[Distributor Inventory](#)
[Product Cross Reference](#)
[Documents & Drawings](#)

Customer Support

[Email or Chat With Us](#)
[Find a Phone Number](#)
[Knowledge Base](#)

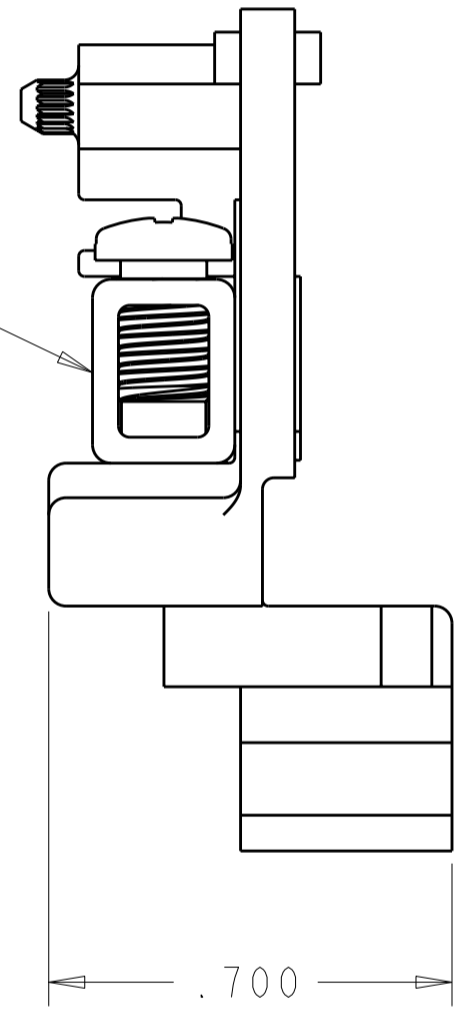
THIS DRAWING IS UNPUBLISHED. RELEASED FOR PUBLICATION 20
 © COPYRIGHT 20 BY - ALL RIGHTS RESERVED.

| LOC | | DIST | | REVISIONS | | | |
|-----|-----|---------------------------|-----------|-----------|------|--|--|
| P | LTR | DESCRIPTION | DATE | DWN | APVD | | |
| | EI | REVISED PER ECO-11-004917 | 12MAR2011 | RK | HMR | | |

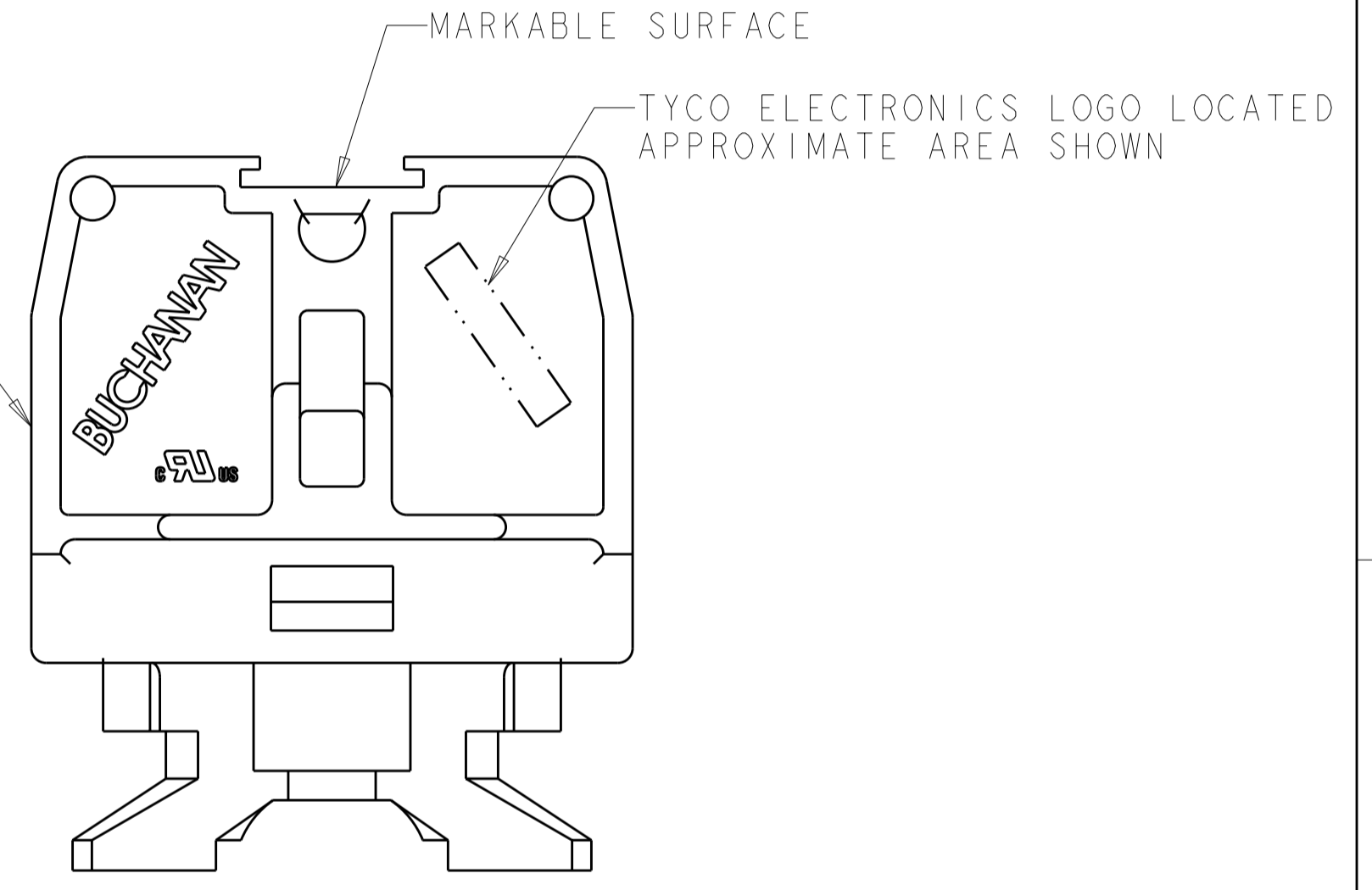


10-32 SCREW
QTY: 2

TUBULAR CONTACT



HOUSING



- 1. PHYSICAL PROPERTIES (STANDARD)
 HOUSING: POLYESTER, UL 94V-0 RATED, COLOR: GRAY.
 TUBULAR CONTACT: COPPER ALLOY, ZINC PLATED.
 SCREW: STEEL, ZINC PLATED CLEAR CHROMATE.
- 2. PHYSICAL PROPERTIES (DURAMAX)
 HOUSING: POLYESTER, UL 94V-0 RATED, COLOR: GRAY.
 TUBULAR CONTACT: COPPER ALLOY, NICKEL PLATED.
 SCREW: COPPER ALLOY, NICKEL PLATED.
- 3. MECHANICAL
 PITCH: .375
 MOUNTING: STANDARD CHANNEL AND CLAMP.
 OPERATING TEMPERATURE: 150°C MAX.
 TORQUE: RECOMMENDED TIGHTENING TORQUE IS 8 IN-LBS.
- 4. ELECTRICAL
 MAXIMUM CURRENT: 50A
 OPERATING VOLTAGE: 600 V
 WIRE RANGE: 8-22 AWG.
- 5. SEE RESTRICTED CUSTOMER DRAWING 4-1437394-7.

| | | |
|-------------------|-------------|-------------|
| - | 4-1437394-7 | 5 |
| 2 | 1546148-2 | |
| 1 | 1546148-1 | |
| MATERIAL / FINISH | | PART NUMBER |

| | | | | |
|---|--|--|-----------------|-------------------------------|
| THIS DRAWING IS A CONTROLLED DOCUMENT. | | DWN S. WELDON 15JAN2002 | TE Connectivity | |
| DIMENSIONS: INCHES | | CHK S. YODER 15JAN2002 | | |
| TOLERANCES UNLESS OTHERWISE SPECIFIED: | | APVD S. YODER 15JAN2002 | | |
| 0 PLC ± 1 PLC ± 2 PLC ± 3 PLC ±.010 4 PLC ± ANGLES ± FINISH | | PRODUCT SPEC - APPLICATION SPEC - WEIGHT - | | |
| MATERIAL SEE TABLE | | NAME ASSEMBLY, TERMINAL BLOCK, NEMA, DOVETAIL BASE, MEDIUM DUTY, TUBULAR SCREW | | RESTRICTED TO - |
| SEE TABLE | | SIZE A2 CAGE CODE 00779 DRAWING NO. 1546148 | | SCALE 3:1 SHEET 1 OF 1 REV EI |