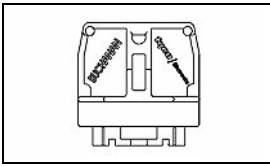


1546163-1 Product Details

[Share](#) [Print](#) [Email](#)



1546163-1

TE Internal Number: 1546163-1

Active

[View 3D PDF](#)

NEMA Terminal Blocks

Always EU RoHS/ELV Compliant (Statement of Compliance)

Product Highlights:

- 900 Series Block Series
- NEMA Product Line
- Block Type = Flat Base
- Contact Configuration = End Section
- Medium Duty Application

[View all Features](#)

Quick Links

- ▶ [Pricing & Availability](#)
- ▶ [Search for Tooling](#)
- ▶ [Product Feature Selector](#)
- ▶ [Contact Us About This Product](#)

[Add to My Part List](#) [Request Sample](#) [Find Similar Products](#) [Buy Product](#)

Documentation & Additional Information

Product Drawings:

- [TERMINAL BLOCK, END SECTION MEDIUM DUTY, FLAT BASE \(PDF, English\)](#)

Catalog Pages/Data Sheets:

- [BUCHANAN TERMINAL BLOCKS CATALOG - NEMA TERMINAL BLOCKS \(PDF, English\)](#)

Product Specifications:

- None Available

Application Specifications:

- None Available

Instruction Sheets:

- None Available

CAD Files: [\(CAD Format & Compression Information\)](#)

- [2D Drawing \(DXF, Version H\)](#)
- [3D Model \(IGES, Version H\)](#)
- [3D Model \(STEP, Version H\)](#)

[List all Documents](#)

Additional Information:

- [Product Line Information](#)

Related Products:

- [Tooling](#)

Product Features (Please use the Product Drawing for all design activity)

Product Type Features:

- [Block Series](#) = 900 Series
- [Product Line](#) = NEMA
- [Block Type](#) = Flat Base

Electrical Characteristics:

- [Voltage Rating \(VAC\)](#) = 300, 600

Body Features:

- [Mount Style](#) = Direct Mount (Flat Base)
- [Blown Fuse Indicator](#) = Without
- [Blown Fuse Indicator Type](#) = None
- [Torque](#) = 10 in-lbs

Contact Features:

- [Contact Configuration](#) = End Section

Housing Features:

- [Housing Material](#) = Polyester
- [UL Flammability Rating](#) = UL 94V-0
- [Housing Color](#) = Gray

Industry Standards:

- [RoHS/ELV Compliance](#) = RoHS compliant, ELV compliant
- [Lead Free Solder Processes](#) = Not relevant for lead free process
- [RoHS/ELV Compliance History](#) = Always was RoHS compliant

Operation/Application:

- [Application](#) = Medium Duty

Other:

- [Brand](#) = Buchanan

Corporate Information

- [About TE](#)
- [Investors](#)
- [News Room](#)
- [Supplier Portal](#)
- [Careers](#)
- [Terms & Conditions](#)
- [Privacy Policy](#)

Quick Links

- [Distributor Inventory](#)
- [Product Cross Reference](#)
- [Documents & Drawings](#)
- [Product Compliance Support Center](#)
- [Site Map](#)

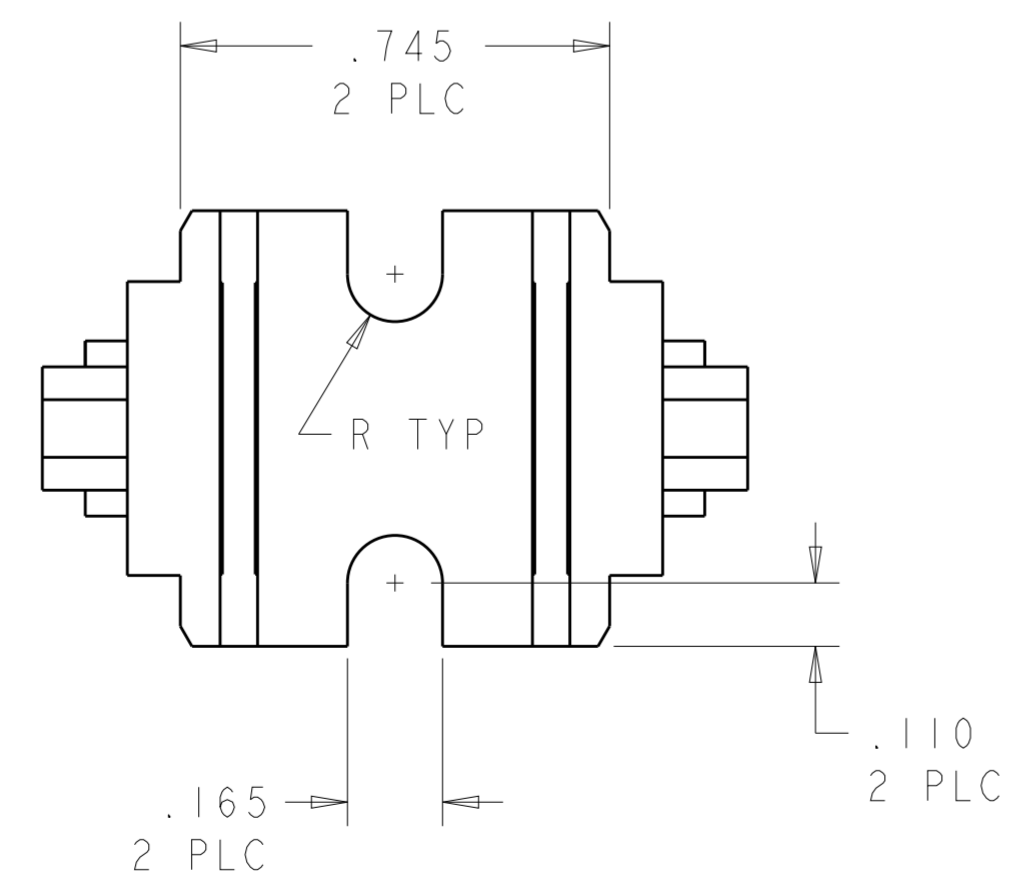
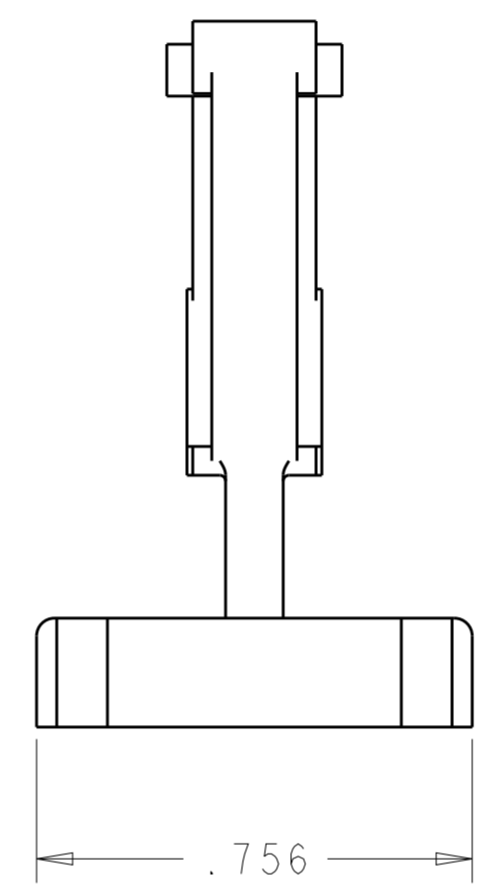
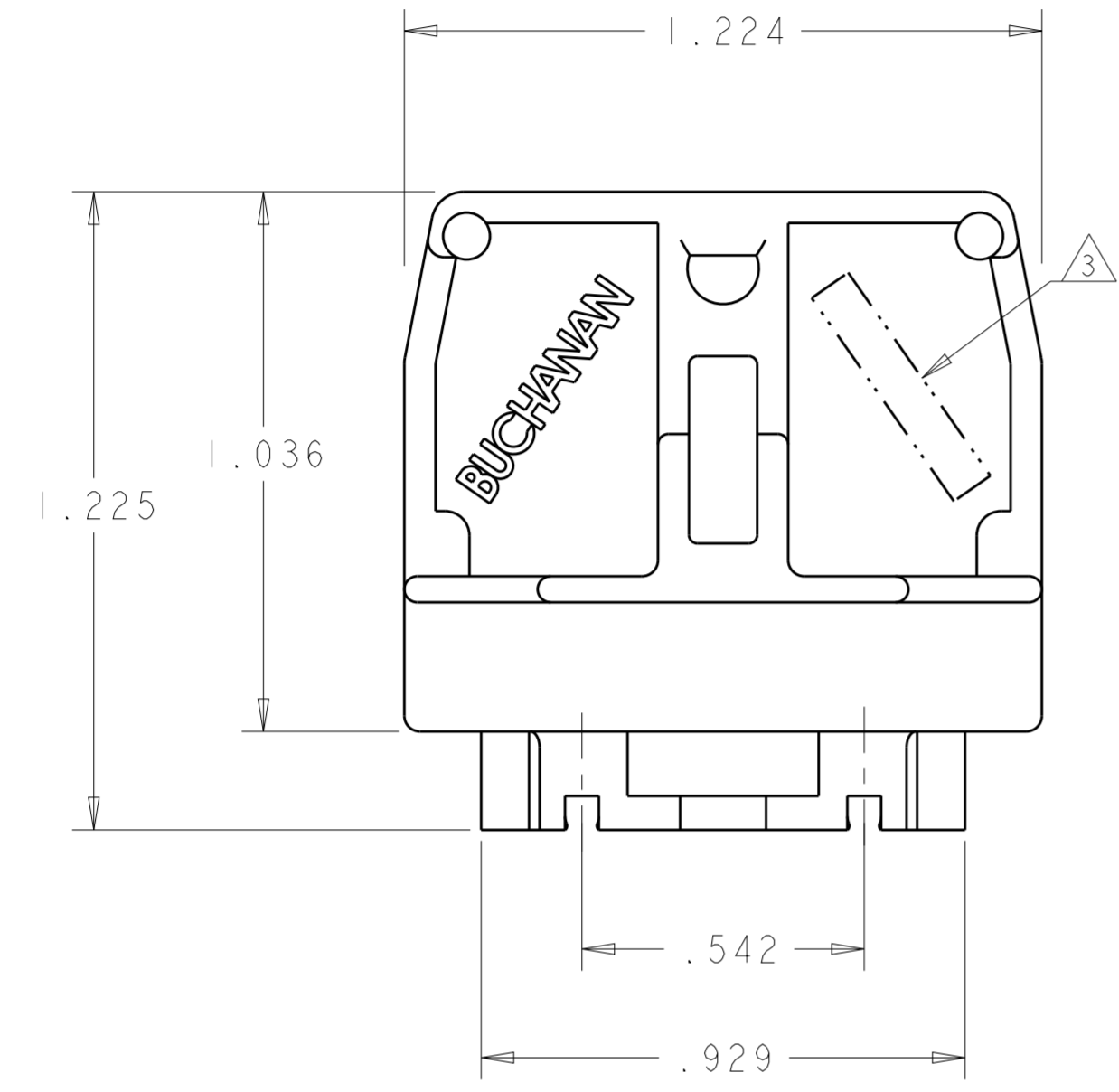
Customer Support

- [Email or Chat With Us](#)
- [Find a Phone Number](#)
- [Knowledge Base](#)
- [Manage Your Account](#)

Keep Me Informed

THIS DRAWING IS UNPUBLISHED. RELEASED FOR PUBLICATION 20
 © COPYRIGHT 20 BY - ALL RIGHTS RESERVED.

LOC		DIST		REVISIONS			
P	LTR	DESCRIPTION	DATE	DWN	APVD		
	E	REVISED PER ECO-13-000447	11JAN2013	KH	MB		



- ① POLYESTER, UL 94V-0 RATED, COLOR: GRAY.
- ② SEE RESTRICTED CUSTOMER DRAWING 3-1437394-9.
- ③ TYCO ELECTRONICS LOGO LOCATED APPROXIMATELY AS SHOWN

3-1437394-9	②
1546163-1	
PART NUMBER	

THIS DRAWING IS A CONTROLLED DOCUMENT.		DWN S. WELDON 13JUN2002	STE TE Connectivity	
DIMENSIONS: INCHES		CHK S. YODER 13JUN2002		
TOLERANCES UNLESS OTHERWISE SPECIFIED:		APVD S. YODER 13JUN2002	NAME	
0 PLC ±		PRODUCT SPEC	TERMINAL BLOCK, END SECTION	
1 PLC ±		APPLICATION SPEC	MEDIUM DUTY, FLAT BASE	
2 PLC ±		WEIGHT	SIZE	CAGE CODE
3 PLC ±.010			A200779	C-1546163
4 PLC ±		CUSTOMER DRAWING	SCALE 3:1	SHEET 1 OF 1
ANGLES ±				REV E
FINISH				