

# Tri-Barrier Strips with Attached Safety Covers, .325" Centerline

## DESCRIPTION

Issued 1/05 1773389

- Tri-Barrier Strips for printed circuit board mounted power applications
- Flip-open safety cover is attached to housing
- Accommodates wire range from 22 to 14 AWG

## APPLICATIONS

- Industrial Controls
- Power Supplies
- HVAC
- Test Equipment
- Telecom



## KEY FEATURES

- Screwdriver access holes in cover allow for efficient wiring; cover may remain closed
- Molded-to-length
- Standard SEMS screws accommodate bare wire termination
- 2 thru 8 positions available

## ELECTRICAL

- Current Rating: 15 A
- Voltage Rating: 300 VAC/DC
- Wire Range: 22-14 AWG, Cu, Solid or Stranded
- Operating Temperature: -40°C to +120°C

## MECHANICAL

- Recommended screw tightening torque: 12 in-lbs
- Combination drive screws with #2 Phillips recess and standard slot

## MATERIALS

- Insulator Body: UL 94V-0 Thermoplastic, black
- Terminal: Brass, tin-plated

## FOR MORE INFORMATION

### Technical Support

Internet: [www.tycoelectronics.com](http://www.tycoelectronics.com)  
E-mail: [newproducts@tycoelectronics.com](mailto:newproducts@tycoelectronics.com)

USA: 1-800-522-6752  
Canada: 1-905-470-4425  
Mexico: 01-800-733-8926  
C. America: 52-55-5-792-0425

South America: 55-11-3611-1514  
Hong Kong: 852-2735-1628  
Japan: 81-44-844-8013  
UK: 44-141-810-8967

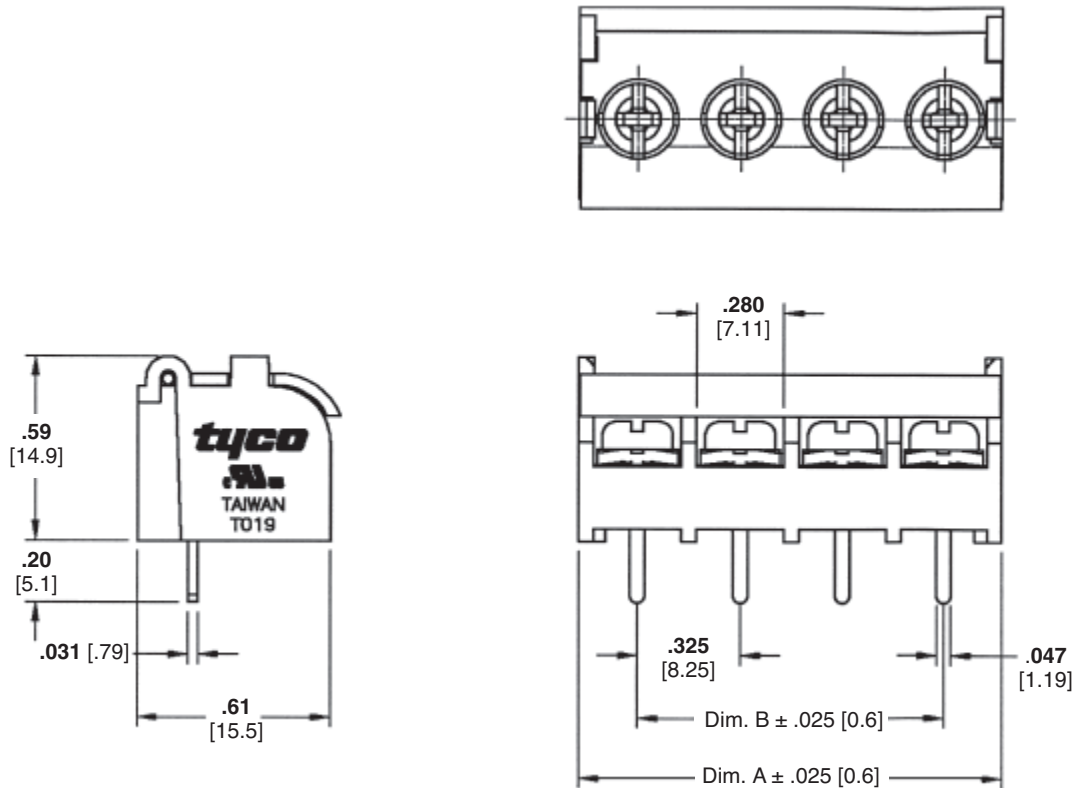
new product

# Tri-Barrier Strips with Attached Safety Covers, .325" Centerline

## STANDARDS & SPECS

- Product has been submitted for UL Component Recognition Evaluation
- RoHS compatible

## PRODUCT DIMENSIONS



## PRODUCT OFFERING

No. of Pos.*	Dimension		Part Numbers
	A	B	
2	.697 [17.7]	.325 [ 8.3]	1546927-2
3	1.022 [26.0]	.650 [16.5]	1546927-3
4	1.347 [34.2]	.975 [24.8]	1546927-4
5	1.672 [42.5]	1.300 [33.0]	1546927-5
6	1.997 [50.7]	1.625 [41.3]	1546927-6
7	2.322 [59.0]	1.950 [49.5]	1546927-7
8	2.647 [67.2]	2.275 [57.8]	1546927-8

\*Contact Tyco Electronics for larger position sizes.

Note: Samples available in Sample Room.