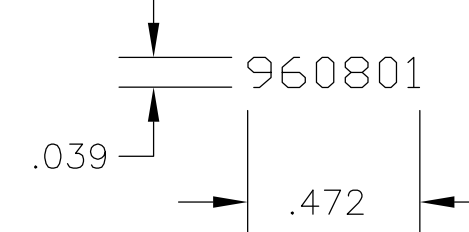


THIS DRAWING IS UNPUBLISHED. RELEASED FOR PUBLICATION
 © COPYRIGHT BY TYCO ELECTRONICS CORPORATION. ALL RIGHTS RESERVED.

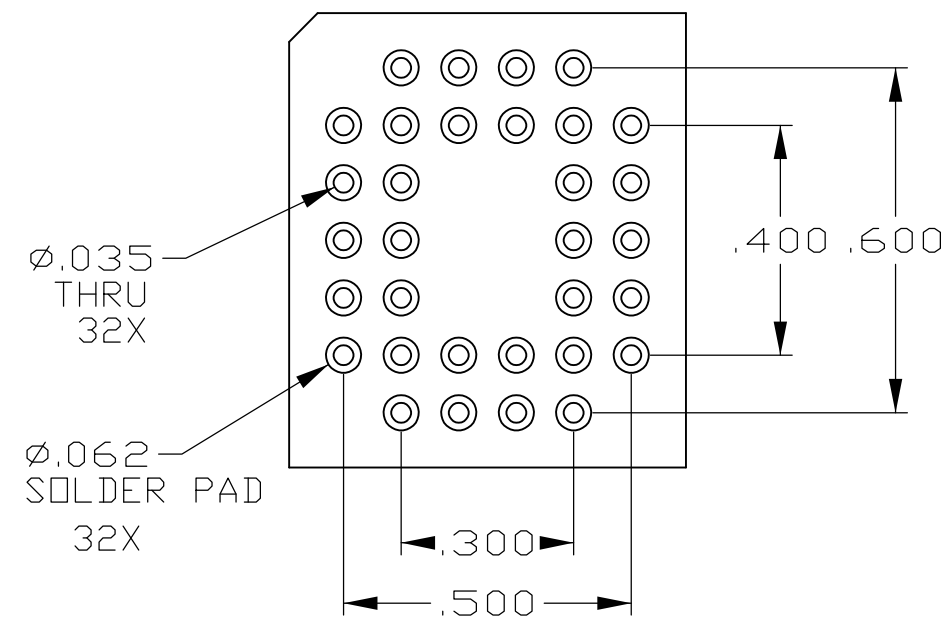
LOC		DIST		REVISIONS			
P	LTR	DESCRIPTION	DATE	DWN	APVD		
B1		ECO-07-005143	10JUL2007	RB	DR		

NOTES:

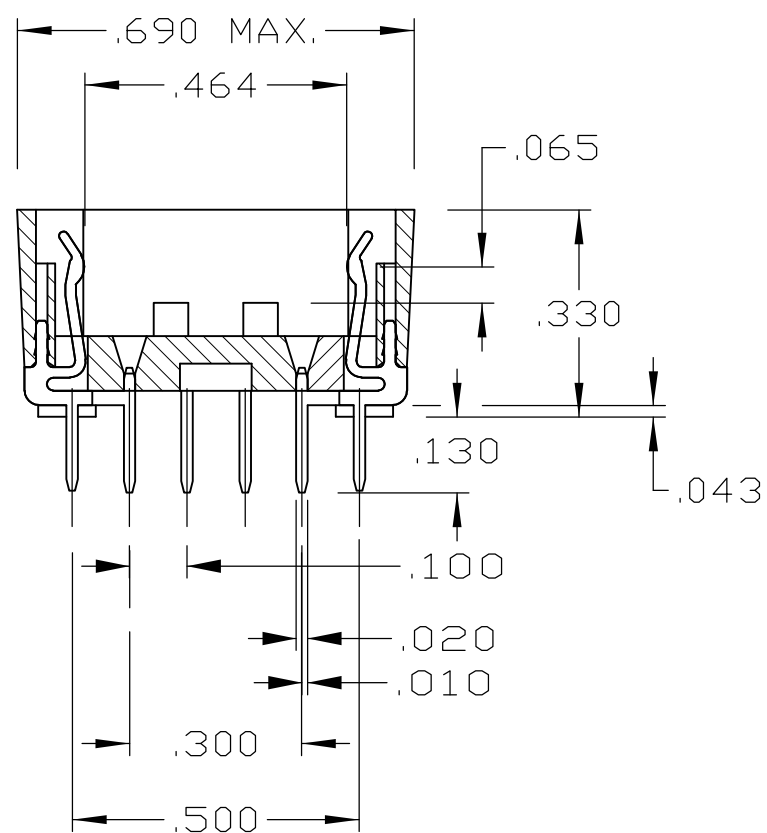
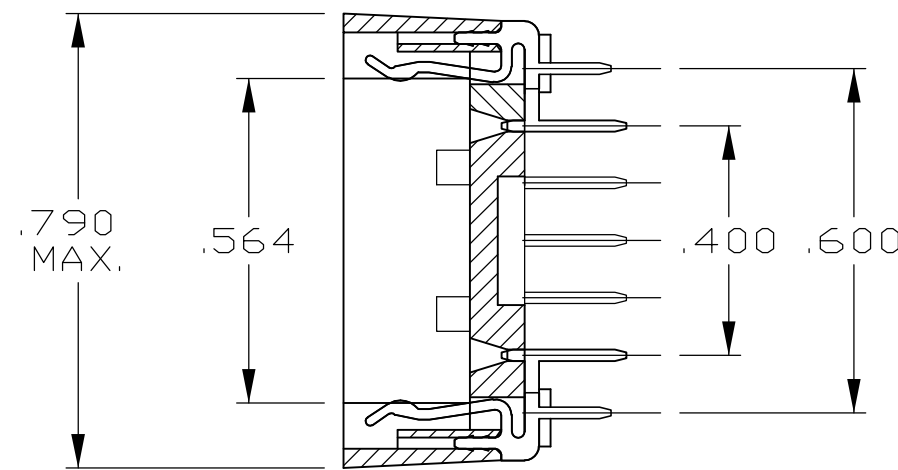
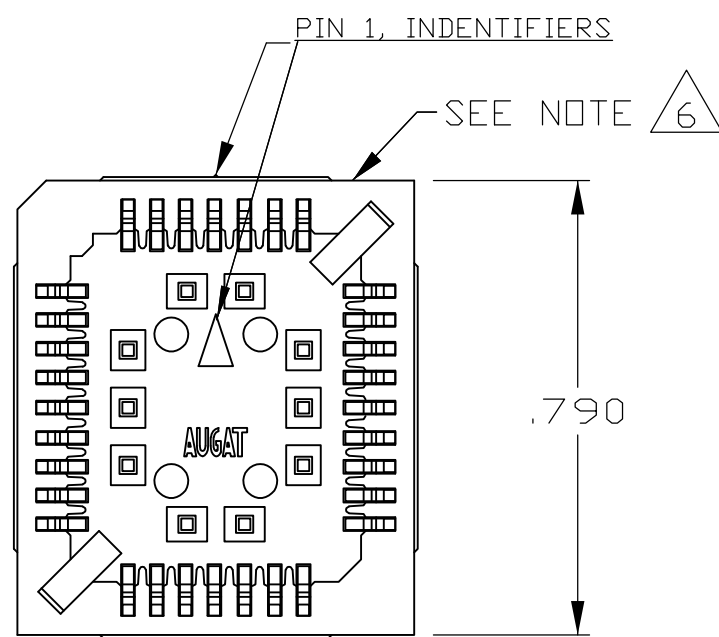
1. MATERIALS:
 CONTACT: COPPER ALLOY, .000180 MIN TIN PLATE OVER .000050 MIN NICKEL.
 INSULATOR: PPS, 40% GLASS FILLED, UL 94V-0
2. ELECTRICAL:
 CURRENT CAPACITY: 1 AMP.
 LOW LEVEL CONTACT RESISTANCE: 30 MILLIOHMS MAX.
 CAPACITANCE (CONTACT TO CONTACT): 1 pF MAX.
 @ 1kHz, MIL-STD-202, METHOD 305.
 DIELECTRIC WITHSTANDING VOLTAGE: 600 VAC PER MIL-STD-1344, METHOD 3001.1.
3. MECHANICAL:
 FORCE, INSERTION: 310g MAX. PER LINE.
 FORCE, WITHDRAWAL: 31g MIN. PER LINE
4. ENVIRONMENTAL:
 OPERATING TEMPERATURE: -67°F TO +221°F (-55°C TO +105°C.)
 STORAGE TEMPERATURE: -67°F TO +221°F (-55°C TO +105°C.)
5. INTERPRET DRAWING PER ASME Y14.5M-1994.
6. DATE CODE (PER BELOW) TO BE LASER CODED AND CENTERED ON THIS SURFACE.



7. UL RECOGNITION E28476.



RECOMMENDED HOLE LAYOUT
 TOLERANCE: $\pm .002$
 UNLESS OTHERWISE NOTED



32	1571540-1
POSITION	PT. NO.

THIS DRAWING IS A CONTROLLED DOCUMENT.		DWN D. MURREN 26AUG03	Tyco Electronics Corporation Harrisburg, Pa. 17105	
DIMENSIONS: INCHES		CHK K. WRIGHT 26AUG03	NAME OUTLINE DRAWING PLCC SOCKET	
TOLERANCES UNLESS OTHERWISE SPECIFIED:		APVD K. WRIGHT 26AUG03	SIZE A2	
0 PLC \pm		PRODUCT SPEC	CAGE CODE 00779	DRAWING NO. 1571540
1 PLC \pm		APPLICATION SPEC	RESTRICTED TO	
2 PLC \pm			-	
3 PLC $\pm .010$				
4 PLC \pm				
ANGLES $\pm 1^\circ$				
FINISH		WEIGHT		
1		CUSTOMER DRAWING		
		SCALE 1:1	SHEET 1 OF 1	REV B1