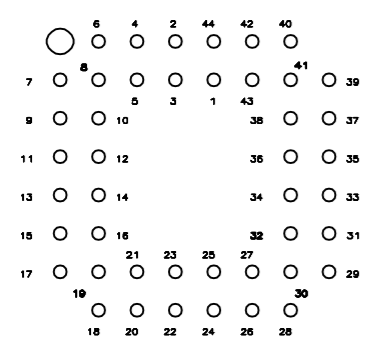
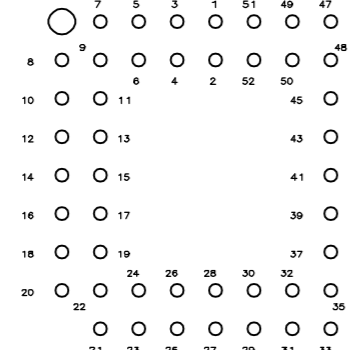


THIS DRAWING IS UNPUBLISHED. RELEASED FOR PUBLICATION
 © COPYRIGHT BY TYCO ELECTRONICS CORPORATION. ALL RIGHTS RESERVED.

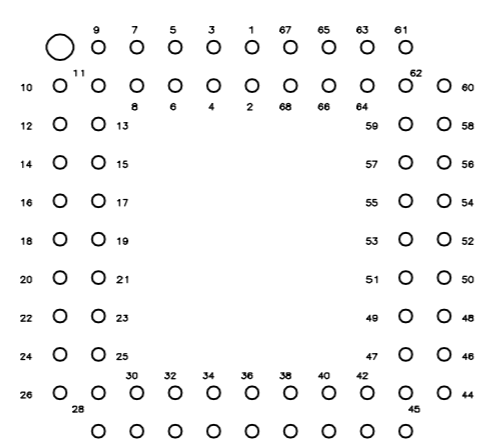
LOC	DIST	REVISIONS			
P	LTR	DESCRIPTION	DATE	DWN	APVD
AG	86	C	ECO-05-010524	19JUL2006	RB DR



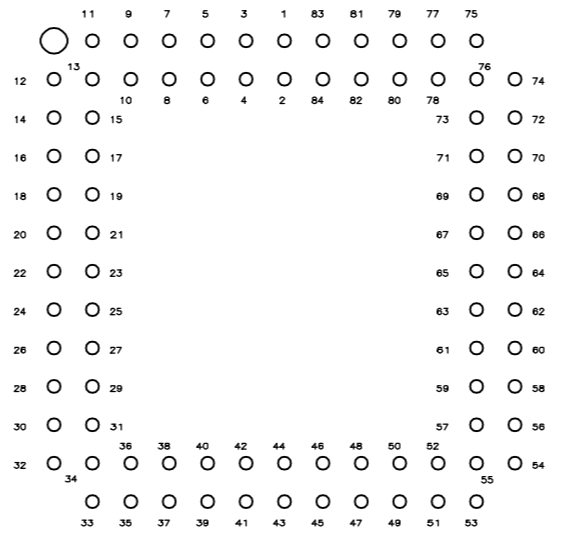
44 POS.



52 POS.

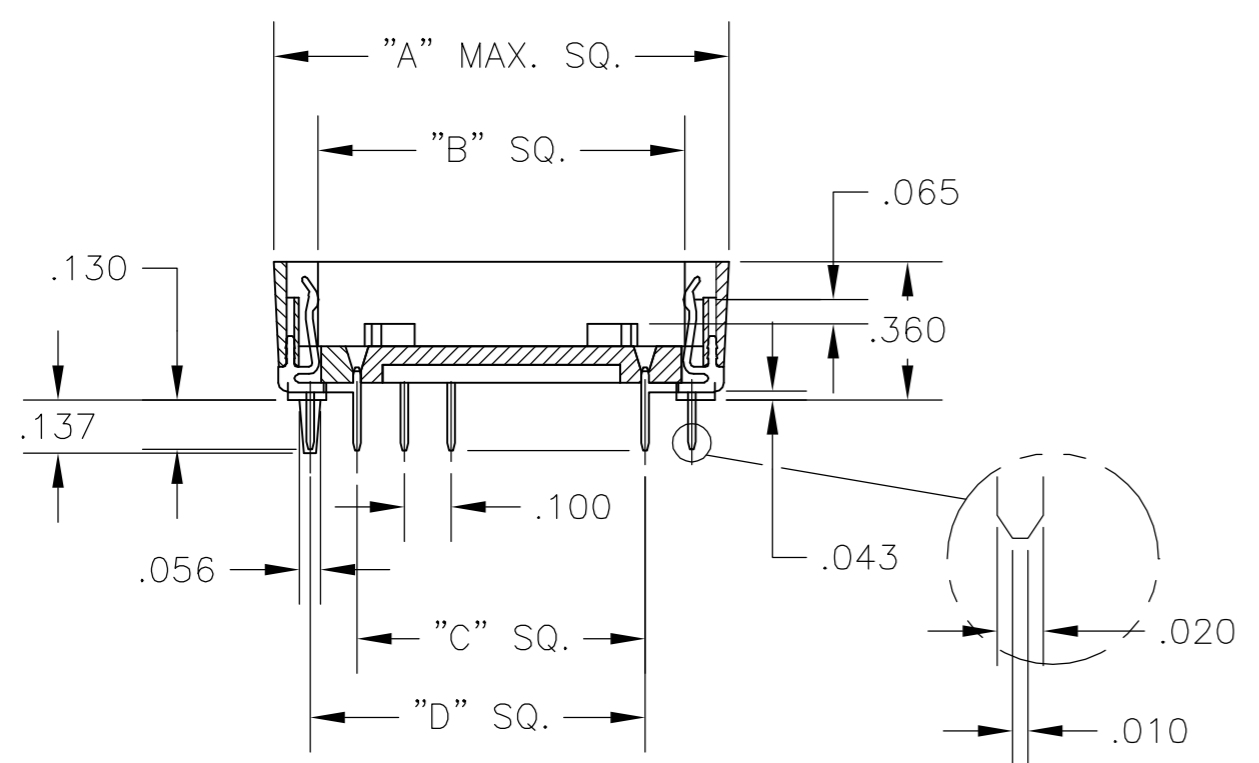
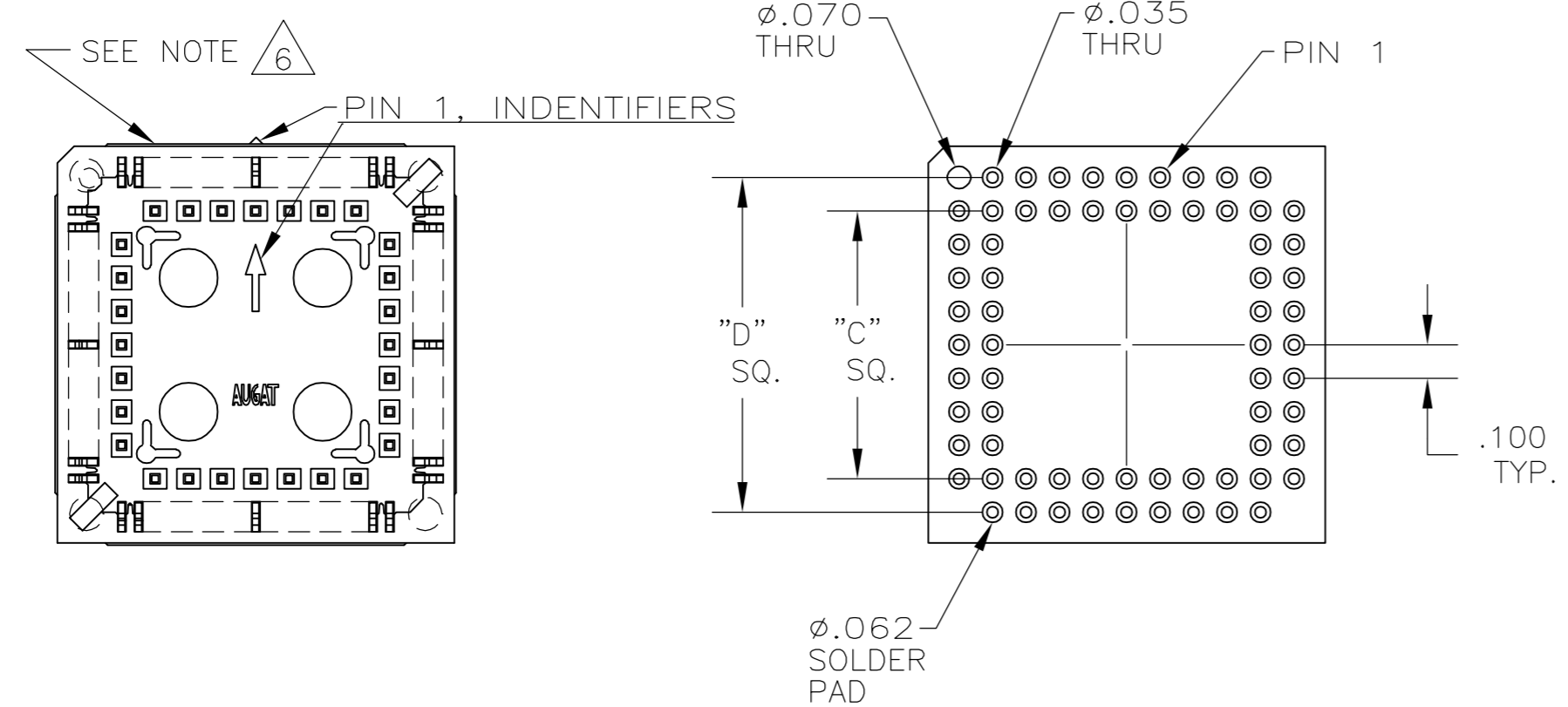


68 POS.



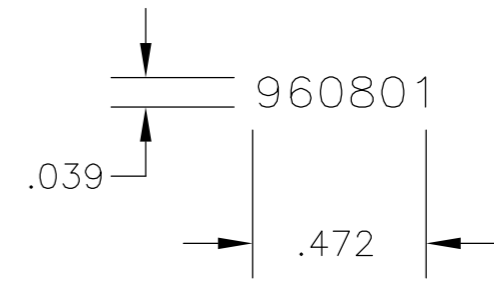
84 POS.

RECOMMENDED HOLE LAYOUT
 TOLERANCE: +.002 UNLESS OTHERWISE NOTED



NOTES:

- MATERIALS:**
 CONTACT: COPPER ALLOY, .000180-.000340 TIN PLATE OVER .000050 MIN NICKEL.
 INSULATOR: PPS, BROWN, UL 94V-0
- ELECTRICAL:**
 CURRENT CAPACITY: 1 AMP.
 LOW LEVEL CONTACT RESISTANCE: 30 MILLIOHMS MAX.
 CAPACITANCE (CONTACT TO CONTACT): 1 pF MAX. @ 1kHz, MIL-STD-202, METHOD 305.
 DIELECTRIC WITHSTANDING VOLTAGE: 600 VAC PER MIL-STD-1344, METHOD 3001.1.
- MECHANICAL:**
 FORCE, INSERTION: 310g MAX. PER LINE.
 FORCE, WITHDRAWAL: 31g MIN. PER LINE.
 FORCE, NORMAL: 200g MIN. PER LINE.
- ENVIRONMENTAL:**
 OPERATING TEMPERATURE: -67°F TO +221°F (-55°C TO +105°C.)
 STORAGE TEMPERATURE: -67°F TO +221°F (-55°C TO +105°C.)
- INTERPRET DRAWING PER ASME Y14.5M-1994.**
 DATE CODE (PER BELOW) TO BE LASER CODED AND CENTERED ON THIS SURFACE.



PART NO.	POS.	DIM. "A"	DIM. "B"	DIM. "C"	DIM. "D"
1571541-1	44	.890	.660	.500	.700
1571541-2	52	.990	.760	.600	.800
1571541-3	68	1.190	.960	.800	1.000
1571541-4	84	1.390	1.160	1.000	1.200

THIS DRAWING IS A CONTROLLED DOCUMENT.		DWN D. MURREN 26AUG2003	tyco Electronics Tyco Electronics Corporation Harisburg, Pa 17105-3808			
DIMENSIONS: INCHES		CHK K. WRIGHT 24APR03				
TOLERANCES UNLESS OTHERWISE SPECIFIED:		APVD K. WRIGHT 24APR03	NAME OUTLINE DRAWING PCS SOCKET			
0 PLC ± 1 PLC ± 2 PLC ± 3 PLC ± .010 4 PLC ± ANGLES ± 1°		APPLICATION SPEC	SIZE A2	CAGE CODE 00779	DRAWING NO C=1571541	RESTRICTED TO -
MATERIAL 1		FINISH 1	SCALE 2:1		SHEET 1 OF 1	REV C
CUSTOMER DRAWING						