

Distributed by:

JAMECO[®]
ELECTRONICS

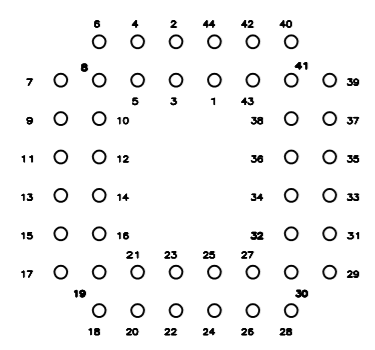
www.Jameco.com ♦ 1-800-831-4242

The content and copyrights of the attached
material are the property of its owner.

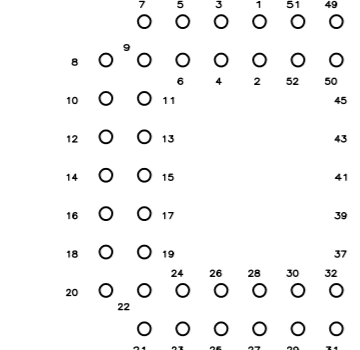
Jameco Part Number 1962383

THIS DRAWING IS UNPUBLISHED. RELEASED FOR PUBLICATION
 © COPYRIGHT BY TYCO ELECTRONICS CORPORATION. ALL RIGHTS RESERVED.

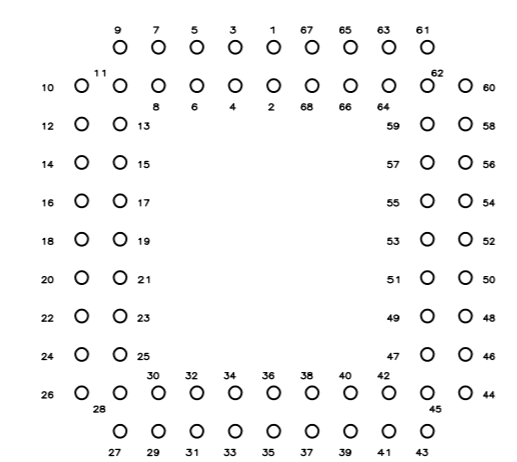
LOC		DIST		REVISIONS			
P	LTR	DESCRIPTION	DATE	DWN	APVD		
	C1	ECO-07-005143	10JUL2007	RB	DR		



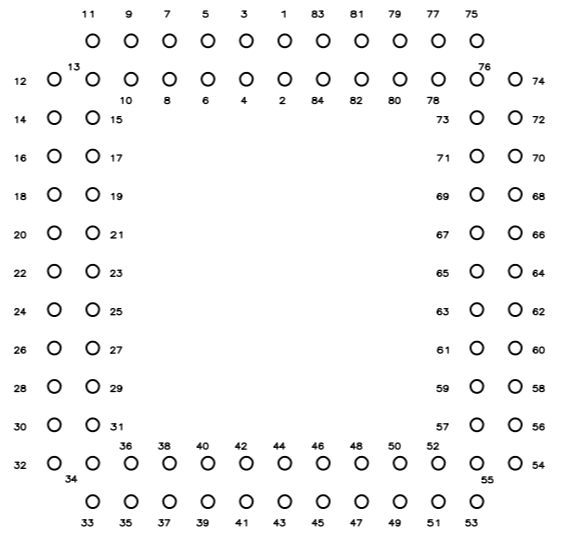
44 POS.



52 POS.

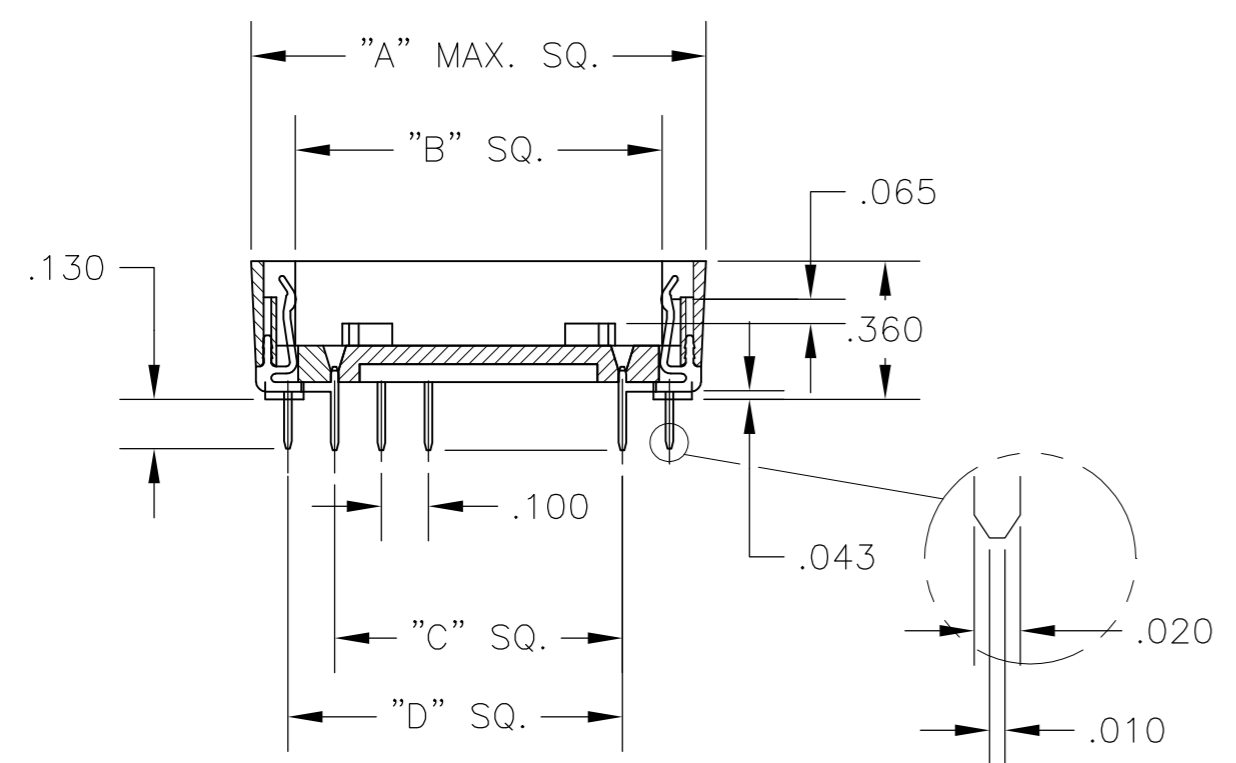
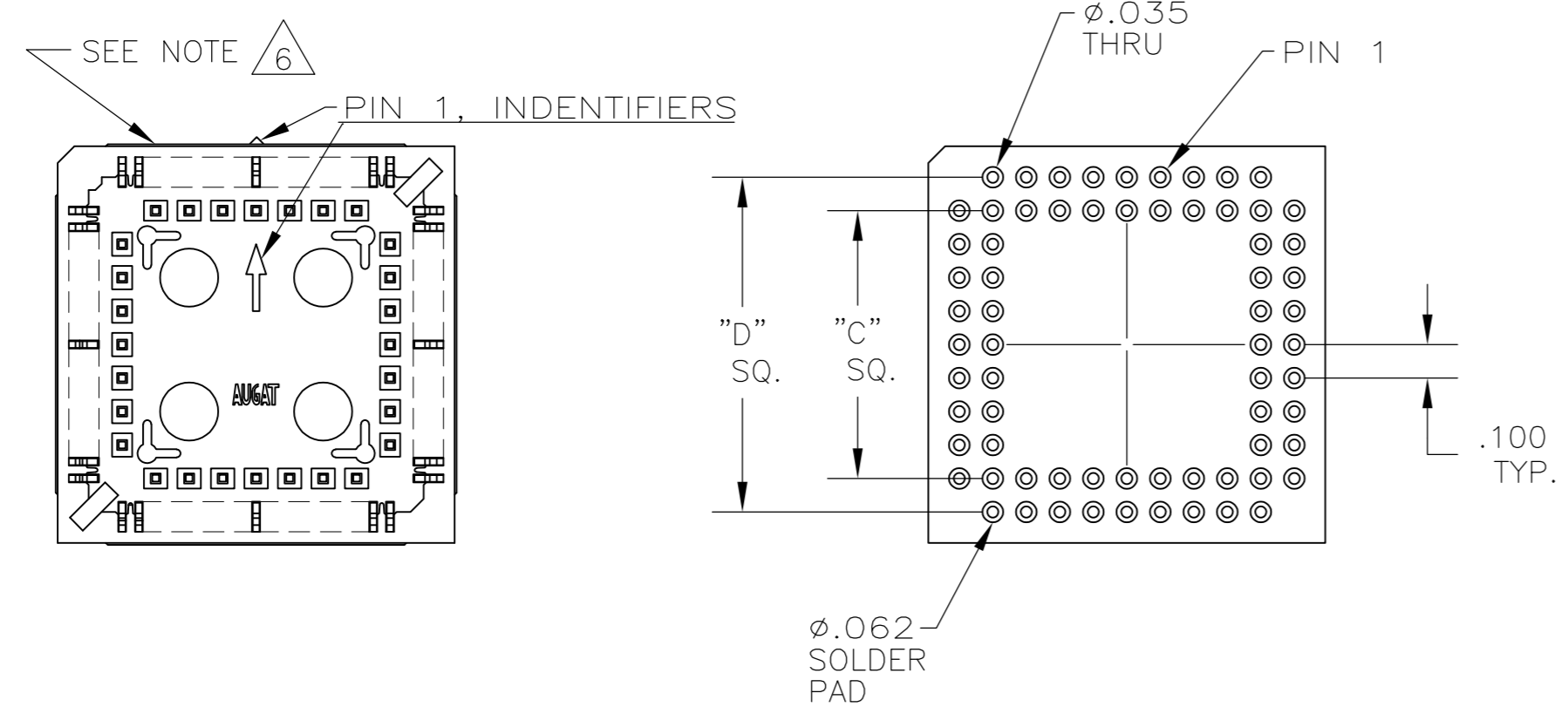


68 POS.



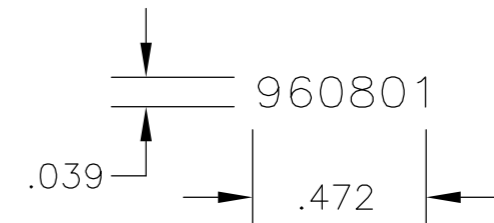
84 POS.

RECOMMENDED HOLE LAYOUT
 TOLERANCE: +.002 UNLESS OTHERWISE NOTED



NOTES:

- MATERIALS:**
 CONTACT: COPPER ALLOY, .000180 MIN TIN PLATE OVER .000050 MIN NICKEL.
 INSULATOR: PPS, 40% GLASS FILLED, UL 94V-0
- ELECTRICAL:**
 CURRENT CAPACITY: 1 AMP.
 LOW LEVEL CONTACT RESISTANCE: 30 MILLIOHMS MAX.
 CAPACITANCE (CONTACT TO CONTACT): 1 pF MAX. @ 1kHz, MIL-STD-202, METHOD 305.
 DIELECTRIC WITHSTANDING VOLTAGE: 600 VAC PER MIL-STD-1344, METHOD 3001.1.
- MECHANICAL:**
 FORCE, INSERTION: 310g MAX. PER LINE.
 FORCE, WITHDRAWAL: 31g MIN. PER LINE.
 FORCE, NORMAL: 200g MIN. PER LINE.
- ENVIRONMENTAL:**
 OPERATING TEMPERATURE: -67°F TO +221°F (-55°C TO +105°C.)
 STORAGE TEMPERATURE: -67°F TO +221°F (-55°C TO +105°C.)
- INTERPRET DRAWING PER ASME Y14.5M-1994.
- DATE CODE (PER BELOW) TO BE LASER CODED AND CENTERED ON THIS SURFACE.



7. UL RECOGNITION E28476

PART NO.	POS.	DIM. "A"	DIM. "B"	DIM. "C"	DIM. "D"
1571541-1	44	.890	.660	.500	.700
1571541-2	52	.990	.760	.600	.800
1571541-3	68	1.190	.960	.800	1.000
1571541-4	84	1.390	1.160	1.000	1.200

THIS DRAWING IS A CONTROLLED DOCUMENT.		DWN D. MURREN 26AUG2003	Tyco Electronics Tyco Electronics Corporation Harrisburg, Pa 17105-3808	
DIMENSIONS: INCHES	TOLERANCES UNLESS OTHERWISE SPECIFIED:	CHK K. WRIGHT 24APR03	NAME OUTLINE DRAWING PLCC SOCKET	
	0 PLC ±	APVD K. WRIGHT 24APR03	PRODUCT SPEC	
	1 PLC ±	APPLICATION SPEC	SIZE A2	
	2 PLC ±	WEIGHT	CAGE CODE 00779	DRAWING NO 1571541
	3 PLC ± .010	CUSTOMER DRAWING	SCALE 2:1	SHEET 1 OF 1
	4 PLC ±	FINISH	RESTRICTED TO	REV C1
	ANGLES ± 1°			