

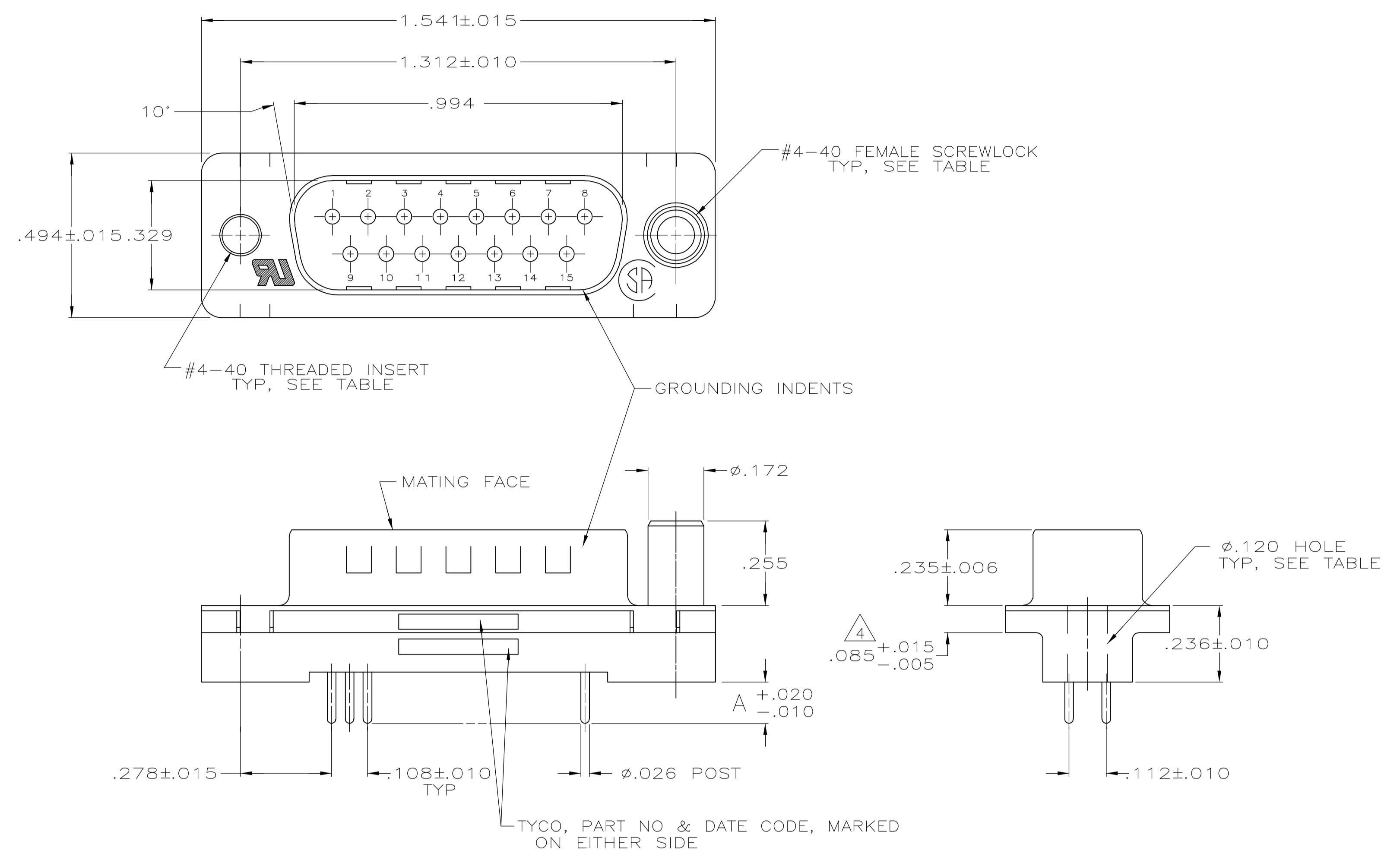
Distributed by:

JAMECO[®]
ELECTRONICS

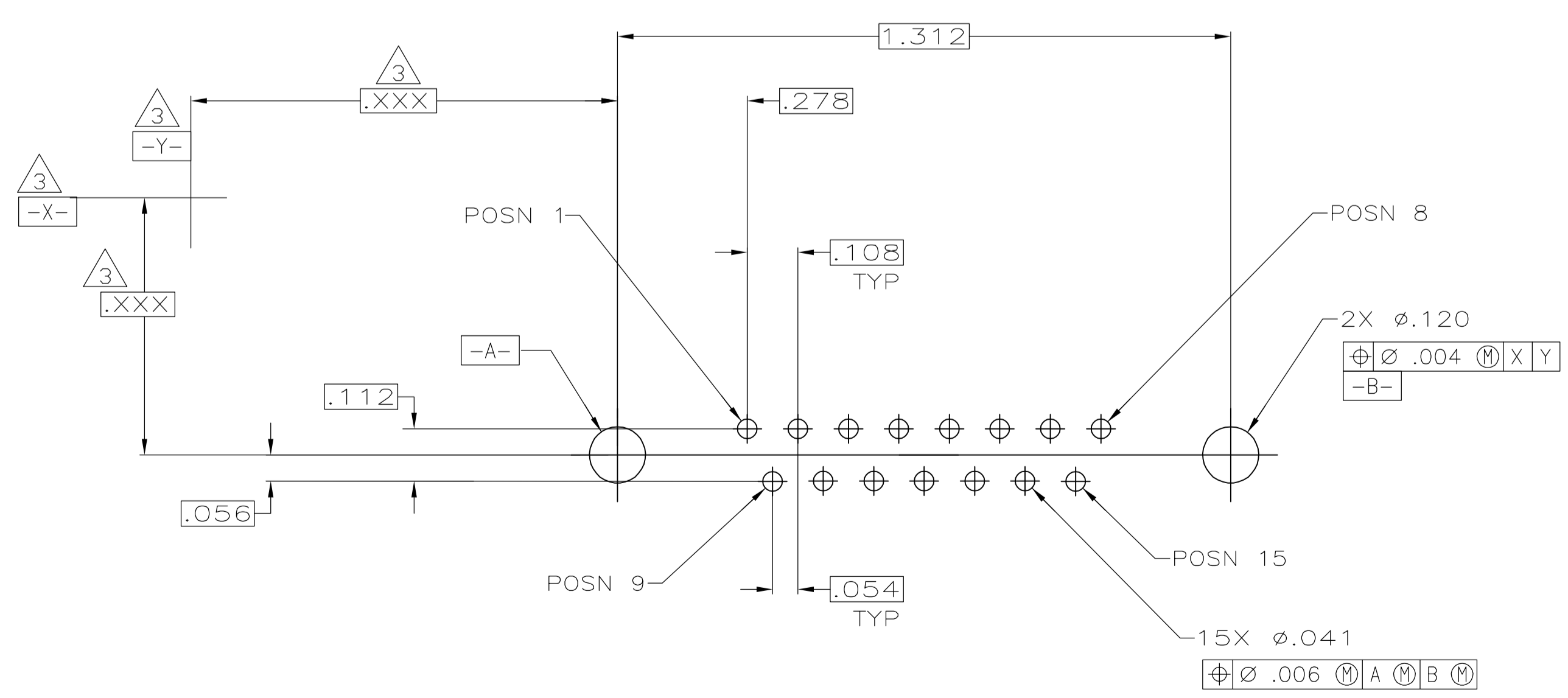
www.Jameco.com ♦ 1-800-831-4242

The content and copyrights of the attached
material are the property of its owner.

Jameco Part Number 1962421



- 1 HOUSING: FLAME RETARDANT, 94V-0 RATED, THERMOPLASTIC;
 COLOR: BLACK
 SHELL: CARBON STEEL
 CONTACTS: BRASS
 INSERTS: BRASS
 SCREWLOCKS: ZINC
- 2 SHELL: .000200 MIN TIN OVER .000100 MIN COPPER.
 INSERTS: UNPLATED.
 SCREWLOCKS: CLEAR CHROMATE.
 CONTACTS: GOLD PLATED FOR A LENGTH OF .150 MIN FROM MATING END, .000030 MIN GOLD IN MATED AREA, .000100 MIN TIN ON OPPOSITE END, ALL OVER .000050 MIN NICKEL.
 -OR-
 GOLD FLASH OVER PALLADIUM NICKEL PLATED FOR A LENGTH OF .150 MIN FROM MATING END, .000030 MIN PALLADIUM NICKEL IN MATED AREA, .000100 MIN TIN ON OPPOSITE END, ALL OVER .000050 MIN NICKEL.
- 3 DATUMS AND BASIC DIMENSIONS ESTABLISHED BY CUSTOMER.
- 4 .110 MAX IN SHELL TAB CLINCH AREAS.



RECOMMENDED PC BOARD MOUNTING DIMENSIONS

W/FEMALE SCREWLOCKS	.170	1-5747872-6
W/THREADED INSERTS	.125	5747872-8
W/Ø.120	.170	5747872-4
HARDWARE	A	PART NO

THIS DRAWING IS A CONTROLLED DOCUMENT.		DWG: B.LATTUCA	20SEP05	Tyco Electronics Corporation Harrisburg, PA 17105-3608
DIMENSIONS: INCHES		CHK: S.BOLASH	20SEP05	
TOLERANCES UNLESS OTHERWISE SPECIFIED:		APP'D: M.WALMSLEY	20SEP05	NAME: PLUG ASSEMBLY, SIZE 2, 15 POS., VERTICAL, .026 DIA POSTS, FRONT SHELL, AMPLIMITE HD-20
0 PLC	± -	PRODUCT SPEC: 108-40025		RESTRICTED TO: -
1 PLC	± -	APPLICATION SPEC: 114-40023		SIZE: A1
2 PLC	± -	DRAWING NO: 00779		SCALE: 4:1
3 PLC	± .005	DRAWING NO: 5747872		SHEET: 1 OF 1
4 PLC	± -	CUSTOMER DRAWING		REV: B
ANGLES	± ± -			
MATERIAL				
FINISH				