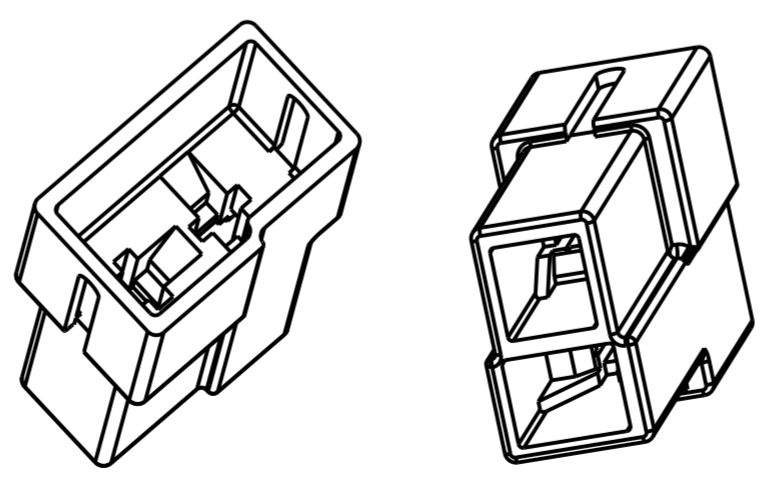
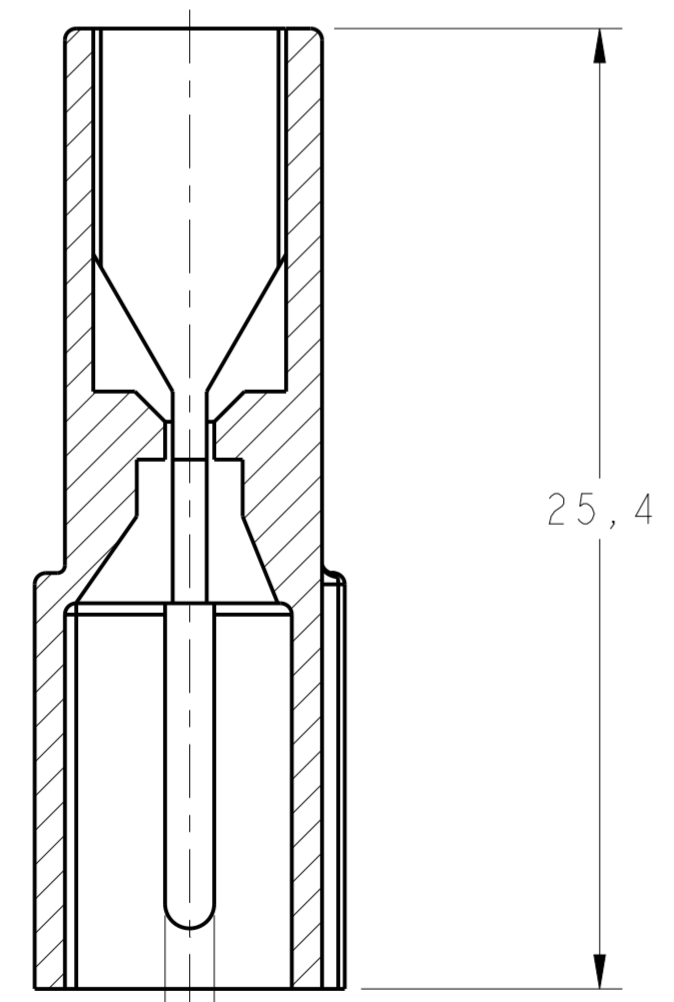
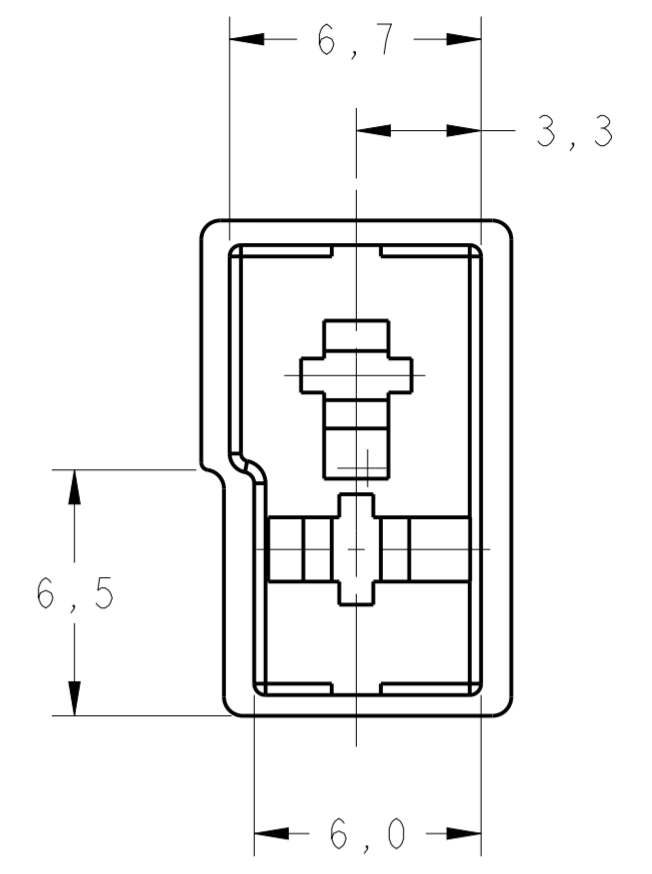
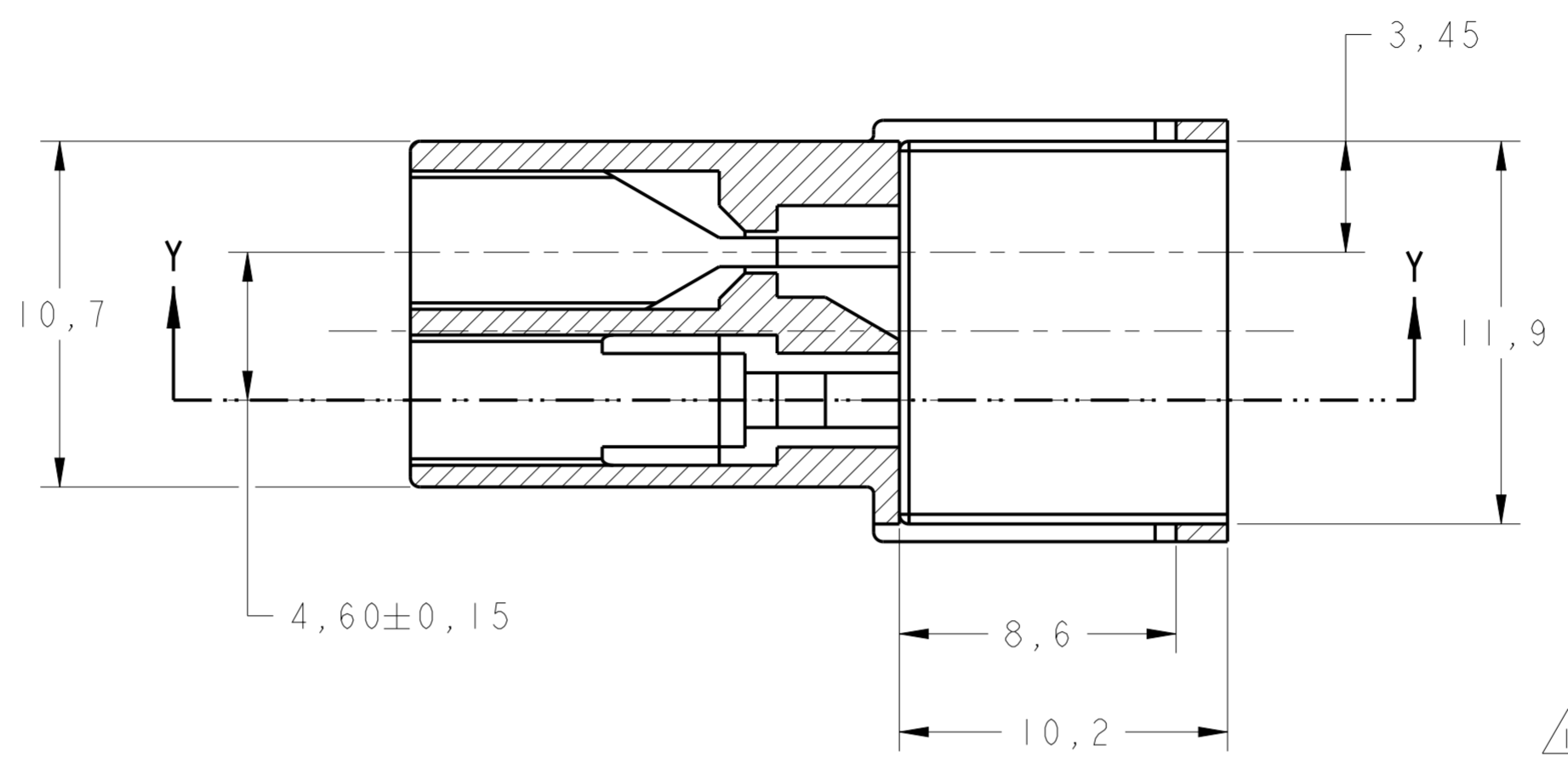
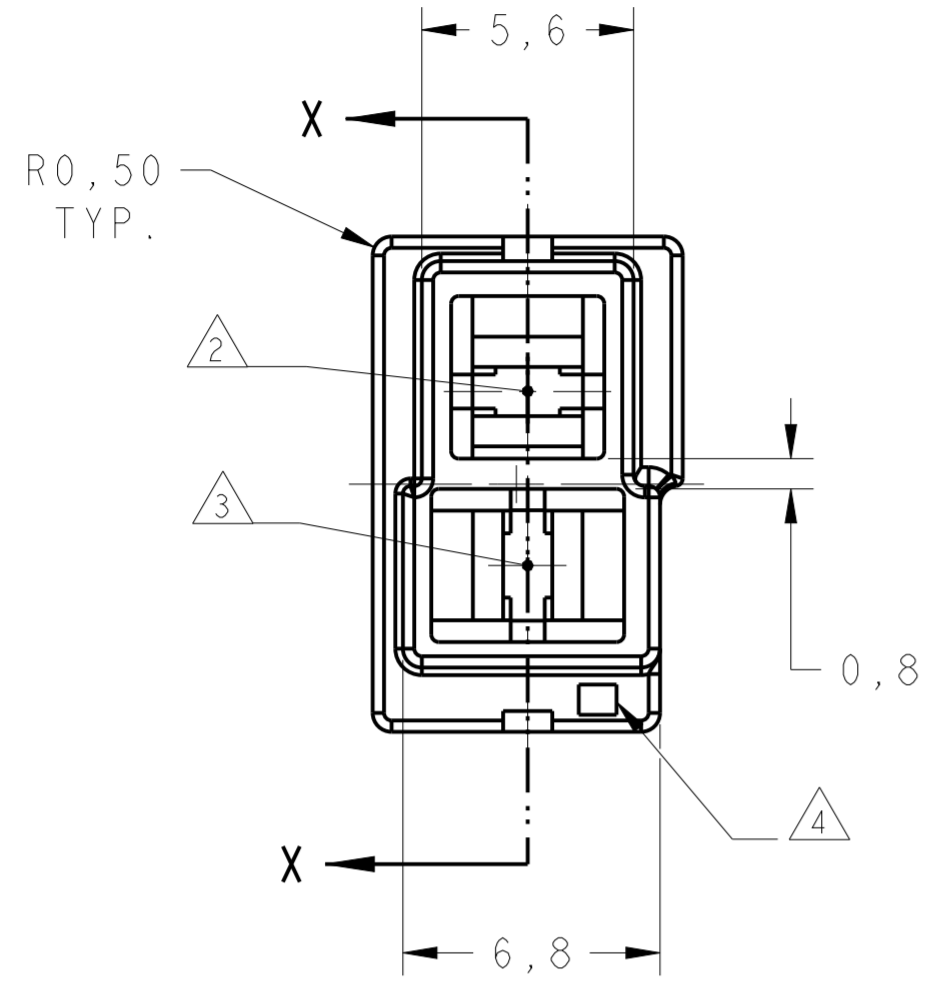


THIS DRAWING IS UNPUBLISHED. RELEASED FOR PUBLICATION 20  
 © COPYRIGHT 20 BY - ALL RIGHTS RESERVED.

**creo**  
 CreoParametri2.0  
**DO NOT REVISE**  
**EXCEPT BY CAD**

REVISIONS					
P	LTR	DESCRIPTION	DATE	DWN	APVD
M		REVISED DESIGN ECO-14-005638	16APR2014	NCL	GOJ
MI		REVISED DRAWING ECO-14-012763	16OCT2014	NCL	DAO



- 1- MATERIA PRIMA CONFORME ESPECIF. IEC 60335-1  
 GWT 750° C, SEM CHAMAS.  
 - RAW MATERIAL ACC. TO SPEC 60335-1  
 GWT 750° C, WITHOUT FRAME.
- 2- CIRCUITO 1-SOMENTE PARA REFERENCIA.  
 - CIRCUIT 1- FOR REFERENCE ONLY.
- 3- CIRCUITO 2- SOMENTE PARA REFERENCIA.  
 - CIRCUIT 2- FOR REFERENCE ONLY.
- 4- NÚMERO DA CAVIDADE DO MOLDE.  
 - MOLD CAVITY NUMBER.
- 5- OBSOLETE PARTS: OBSOLETE CIS STREAMLINING  
 PER D.RENAUD/D.SINISI

FINISH	MATERIAL	PART NUMBER
NATURAL	PA6.6 V-0	5 1-626065 -2
NATURAL	PA6.6-ZYTEL 103 HSL	5 1-626065 -1
NATURAL	PBT V-0	5 1-626065 -0
ORANGE	POLIAMIDA 6.6	5 626065 -9
VIOLET	POLIAMIDA 6.6	5 626065 -8
GRAY	POLIAMIDA 6.6	5 626065 -7
BROWN	POLIAMIDA 6.6	5 626065 -6
BLACK	POLIAMIDA 6.6	626065 -5
YELLOW	POLIAMIDA 6.6	5 626065 -4
BLUE	POLIAMIDA 6.6	5 626065 -3
GREEN	POLIAMIDA 6.6	5 626065 -2
RED	POLIAMIDA 6.6	5 626065 -1
NATURAL	POLIAMIDA 6.6	626065 -0

SECTION Y-Y

PERSPECTIVE VIEW  
 SCALE 3:1

THIS DRAWING IS A CONTROLLED DOCUMENT.

DIMENSIONS: mm	TOLERANCES UNLESS OTHERWISE SPECIFIED: 0 PLC ±0,2 1 PLC ±0,3 2 PLC ± 3 PLC ± 4 PLC ± ANGLES ±30' FINISH	DWN NCLAPRESA 18FEB2011 CHK JRGOLDSCHIMDT 18FEB2011 APVD MBGODOY 18FEB2011	NAME - HOUSING 2 POSN., FASTIN-ON .110 TAB
MATERIAL SEE TABLE		PRODUCT SPEC - APPLICATION SPEC - WEIGHT -	SIZE A2 CAGE CODE 00779 DRAWING NO C-626065 RESTRICTED TO -
		Customer Drawing	SCALE 5:1 SHEET OF REV MI

STC TE Connectivity