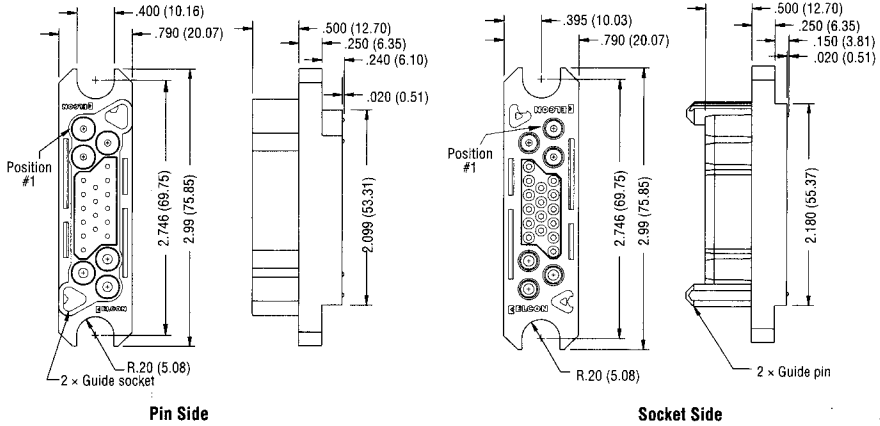


ELCON Drawer Series Connectors

Mini Drawer

- Dimensions**—
2.99" x 0.79" (75.9 x 20.1 mm)
- Housing Variations**—See Part Numbers
- Guides and Polarization**—Built in
- Available Contacts**—
Size 12 / 16 x 6 contacts
Size 20 x 16 contacts
- Current Rating**—Up to 35 Amps per size 12 contact
- Contact Features**—Hot Plug size 12 contact option
- Contact Sequencing**—Multi-level for power and signal
- Contact Terminations**—
Size 12: Crimp and PCB tail
Size 16: Crimp and PCB tail
Size 20: Crimp and PCB tail

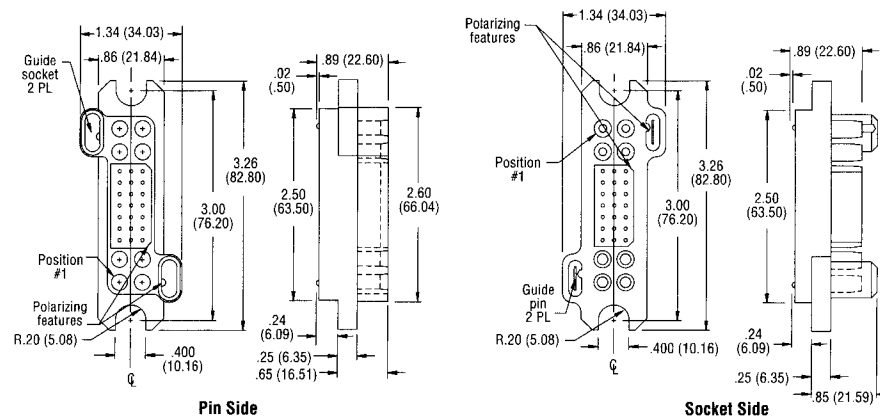


Base Housing Part Numbers

Pin Housing		Socket Housing	
1648110-1	Size 12 + Size 20 + Size 12	1648115-1	Size 12 + Size 20 + Size 12
1648111-1	Size 16 + Size 20 + Size 16	1648116-1	Size 16 + Size 20 + Size 16
1648112-1	Size 12 + Size 20 + Size 16	1648117-1	Size 12 + Size 20 + Size 16

Lower Drawer (catalog or 499-037)

- Dimensions**—
3.26" x 1.34" (82.8 x 34.0 mm)
- Housing Variations**—See Part Numbers
- Guides and Polarization**—Built in
- Available Contacts**—
Size 12 / 16 x 8 contacts
Size 20 x 21 contacts
- Current Rating**—Up to 35 Amps per size 12 contact
- Contact Features**—Hot Plug size 12 contact option
- Contact Sequencing**—Multi-level for power and signal
- Contact Terminations**—
Size 12: Crimp and PCB tail
Size 16: Crimp and PCB tail
Size 20: Crimp and PCB tail



Base Housing Part Numbers

Pin Housing		Socket Housing	
1648203-1	Size 12 + Size 20 + Size 12	1648206-1	Size 12 + Size 20 + Size 12
1648204-1	Size 16 + Size 20 + Size 16	1648207-1	Size 16 + Size 20 + Size 16
1648205-1	Size 12 + Size 20 + Size 16	1648208-1	Size 12 + Size 20 + Size 16