

## 1648325-1 Product Details

[Share](#) [Print](#) [Email](#)




**1648325-1**

TE Internal Number: 1648325-1

 Active

[View 3D PDF](#)

### High Current ELCON Drawer Connectors

 Always EU RoHS/ELV Compliant  
(Statement of Compliance)

#### Product Highlights:

- Contact
- Contact Type = Socket
- Contact Size = 20
- Termination Type = Crimp (Standard)
- Not Hot Pluggable

[View all Features](#)

### Quick Links

- ▶ [Pricing & Availability](#)
- ▶ [Search for Tooling](#)
- ▶ [Product Feature Selector](#)
- ▶ [Contact Us About This Product](#)

[Add to My Part List](#)

[Request Sample](#)

[Find Similar Products](#)

[Buy Product](#)

### Documentation & Additional Information

#### Product Drawings:

- [CONTACT, SOCKET, SIZE NO. 20 CRIMP STYLE, LOW INSERT...](#) (PDF, English)

#### Catalog Pages/Data Sheets:

- [POWER CONNECTORS CATALOG SEC02 CABLE MOUNTED](#) (PDF, English)
- [AMP & ELCON Power Connector Layout Forms Datasheet 6...](#) (PDF, English)

#### Product Specifications:

- None Available

#### Application Specifications:

- [ELCON Drawer Series Connectors](#) (PDF, English)

#### Instruction Sheets:

- None Available

#### CAD Files: (CAD Format & Compression Information)

- [2D Drawing](#) (DXF, Version A)
- [3D Model](#) (IGES, Version A)
- [3D Model](#) (STEP, Version A)

[List all Documents](#)

#### Additional Information:

- [Product Line Information](#)

#### Related Products:

- [Tooling](#)

### Product Features (Please use the Product Drawing for all design activity)

#### Product Type Features:

- Product Type = Contact

#### Electrical Characteristics:

- Hot Pluggable = No
- Current Rating (A) = 5

#### Termination Features:

- Termination Type = Crimp (Standard)

#### Contact Features:

- Contact Type = Socket
- Contact Size = 20
- Contact Base Material = Copper
- Contact Plating = Gold

#### Industry Standards:

- [RoHS/ELV Compliance](#) = RoHS compliant, ELV compliant
- [Lead Free Solder Processes](#) = Not relevant for lead free process
- [RoHS/ELV Compliance History](#) = Always was RoHS compliant

#### Other:

- Brand = Elcon

4

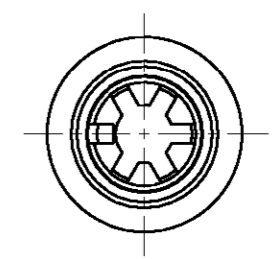
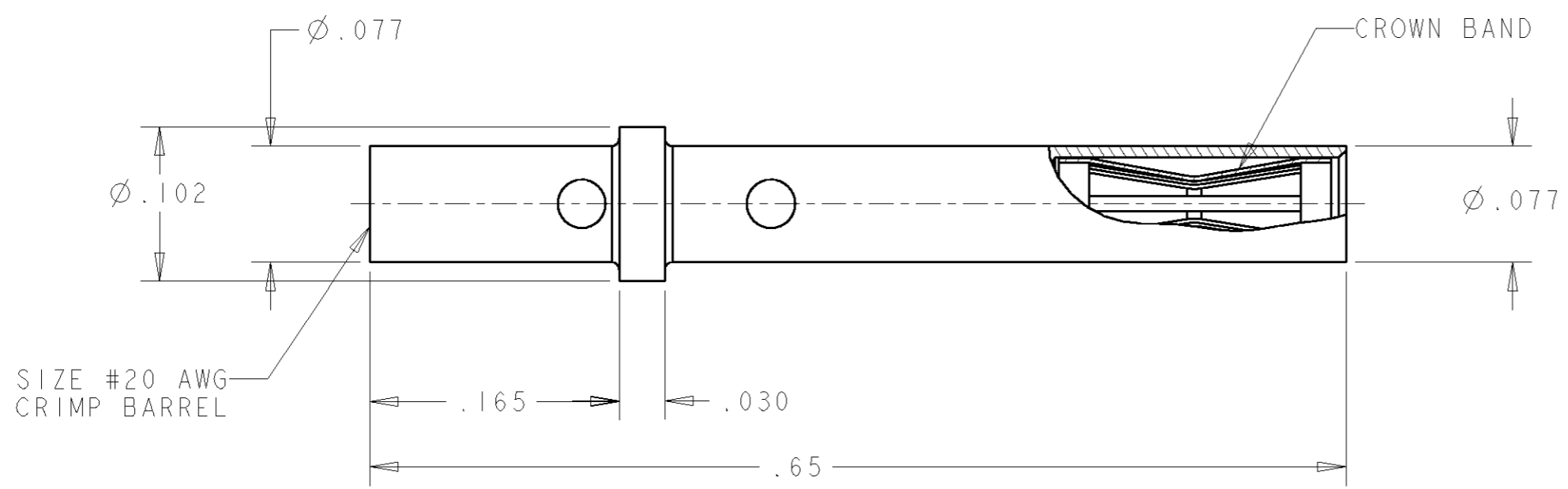
3

2

1

THIS DRAWING IS UNPUBLISHED. RELEASED FOR PUBLICATION 20  
 © COPYRIGHT BY ALL RIGHTS RESERVED.

LOC	DIST	REVISIONS					
GP	00	P	LTR	DESCRIPTION	DATE	DWN	APVD
		A1		REVISED PER ECO-11-005294	30APR11	RK	HMR



1. PART NUMBER CHANGES AND/OR DESIGN CHANGES AFFECTING ITEM INTERCHANGEABILITY REQUIRES PRIOR TYCO APPROVAL AND AUTHORIZATION BY REVISION TO THIS DRAWING.

2 MATERIAL:  
 BODY: COPPER ALLOY  
 CROWN BAND: BERYLLIUM COPPER

3 FINISH:  
 BODY: GOLD PLATE .000010 MIN THK. OVER NICKEL  
 .000040 MIN THK.  
 CROWN BAND: GOLD PLATE .000030 MIN THK. IN CONTACT AREA  
 OVER NICKEL .000040 MIN THK.

4. ITEMS PROVIDED TO THIS SPECIFICATION TO BE PERMANENTLY IDENTIFIED ON THE CONTAINER PER THE FOLLOWING IDENTIFIER:

AS SHOWN	1648325-1
DESCRIPTION	PART NUMBER

TE CONNECTIVITY NUMBER: XXXXXXXX-X  
 DATE CODE (eg. 0216): YEAR WEEK  
 XXXX

DOWNS: R.GRZYBOWSKI 07 JUN 2006		<b>TE</b> TE Connectivity	
CHECKED: S.FLICKINGER 07 JUN 2006			
APPROVED: S.FLICKINGER 07 JUN 2006		NAME: CONTACT, SOCKET, SIZE NO. 20 CRIMP STYLE, LOW INSERTION FORCE	
DIMENSIONS: INCHES		PRODUCT SPEC: -	
TOLERANCES UNLESS OTHERWISE SPECIFIED:		APPLICATION SPEC: -	
0 PLC ±-		WEIGHT: -	
1 PLC ±-		SIZE: A3	
2 PLC ±.01		CAGE CODE: 00779	
3 PLC ±.005		DRAWING NO: C-1648325	
4 PLC ±-		RESTRICTED TO: -	
ANGLES ±.5		SCALE: 10:1	
MATERIAL: 2		SHEET: 1 OF 1	
FINISH: 3		REV: A1	
CUSTOMER DRAWING			