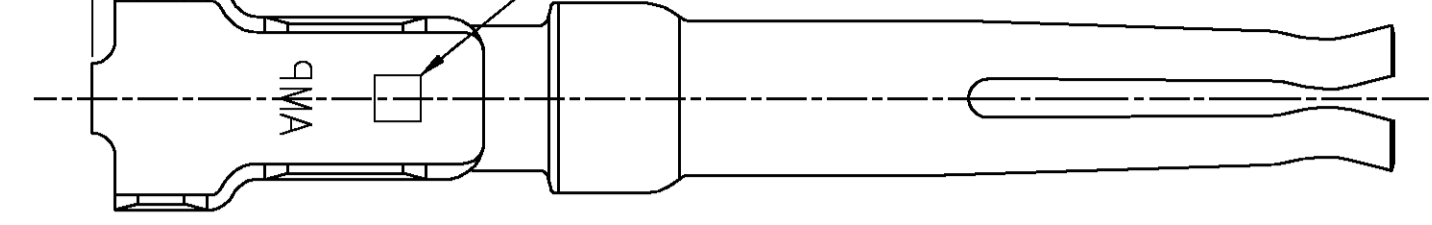
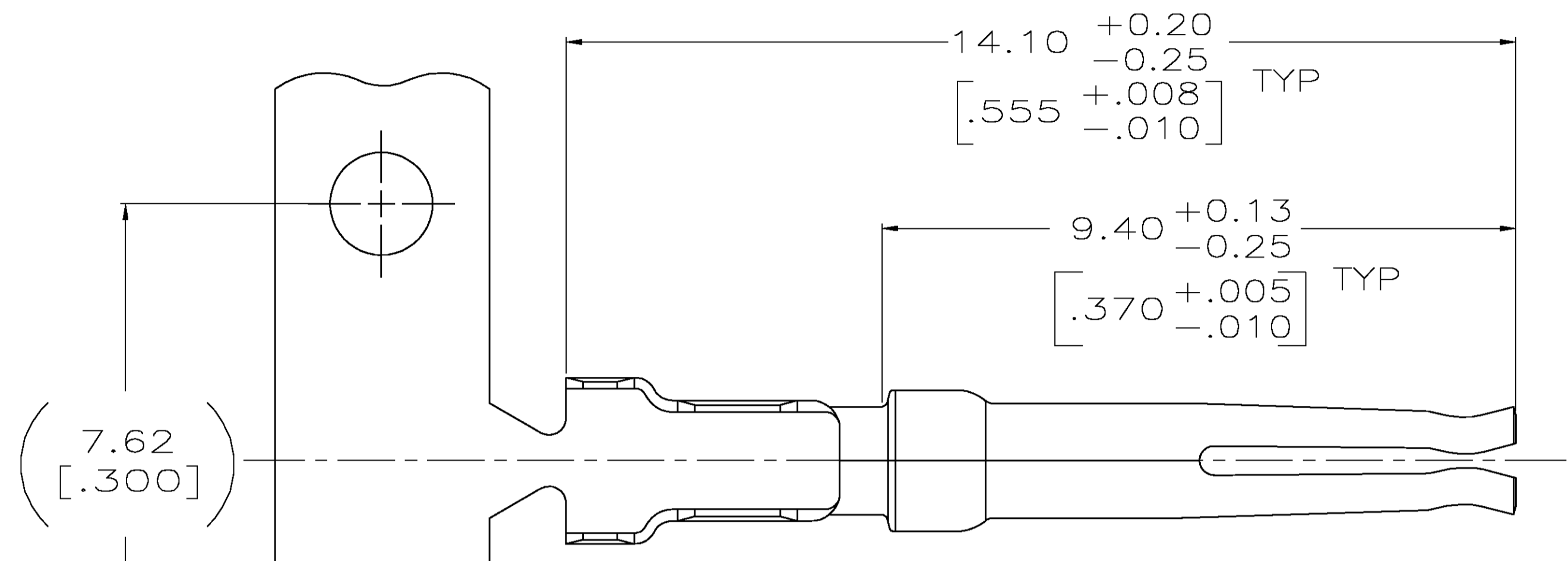


0.25 MAX
[.010]
 COLOR CODED RED, ON FAR SIDE,
 INDICATES 20-24 AWG WIRE RANGE,
 LOOSE PIECE ONLY

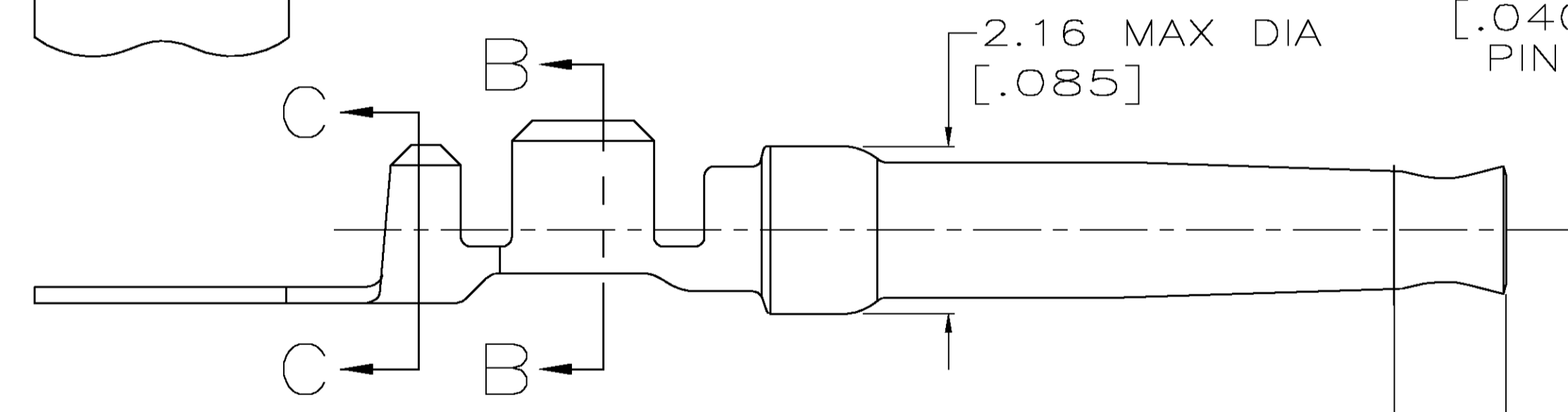


DETAIL Z
SCALE 8:1

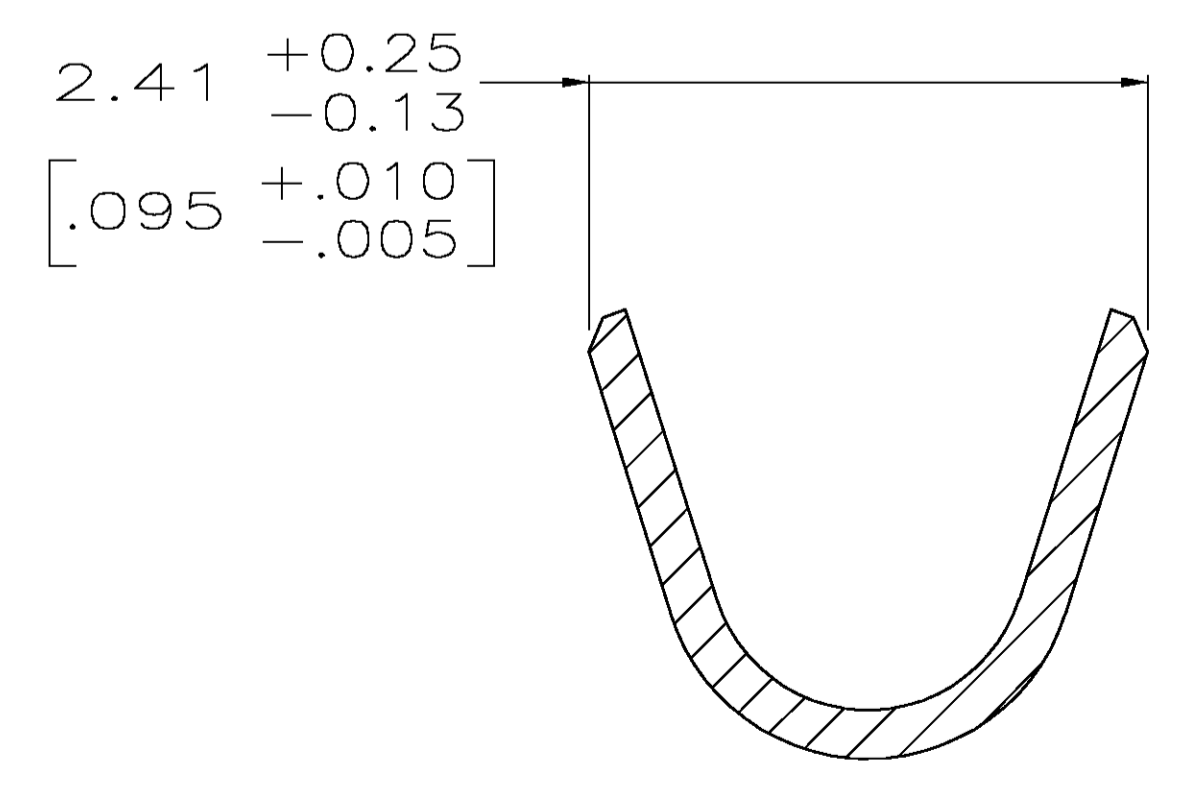
- △1 FOR MINI-APPLICATOR AND STRIPPER CRIMPER.
- △2 FOR HAND TOOL USE ONLY.
- 3. WIRE RANGE OF 20-24 AWG. INSULATION RANGE OF 1.27/1.52 [.050-.060].
- 4. TIN PLATING MAY NOT APPEAR ON CARRIER STRIP.
- △5 GOLD FLASH IN LOCALIZED GOLD PLATE AREA, 2.54 μm [.000100] MIN TIN ON WIRE BARRELS, ALL OVER 0.76 μm [.000030] MIN NICKEL UNDERPLATE.
- △6 0.76 μm [.000030] MIN GOLD IN LOCALIZED GOLD PLATE AREA, 2.54 μm [.000100] MIN TIN ON WIRE BARRELS, ALL OVER 1.27 μm [.000050] MIN NICKEL UNDERPLATE.
- △7 GOLD FLASH IN LOCALIZED GOLD PLATE AREA, 0.76 μm [.000030] MIN TIN ON WIRE BARRELS, ALL OVER 0.76 μm [.000030] MIN NICKEL UNDERPLATE.
- △8 SPECIAL PACKAGING.



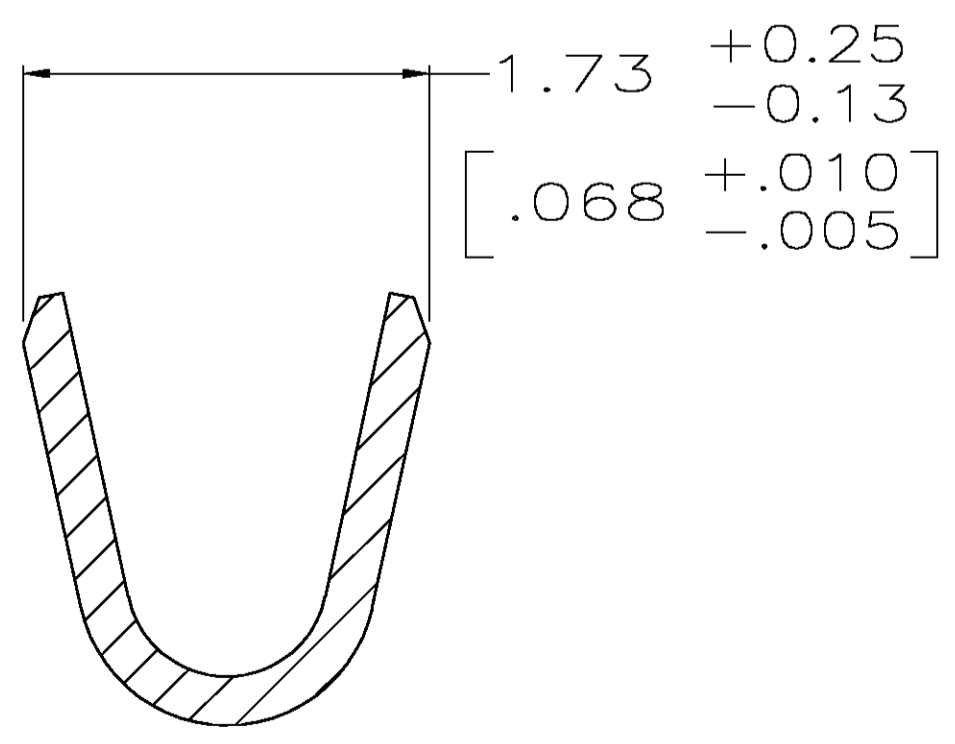
ID ACCOMMODATES
 1.02±0.04 DIA
 [.0400±.0015]
 PIN CONTACT



LOCALIZED GOLD
 PLATE AREA
 1.40 MIN
 [.055]



SECTION C-C
SCALE 20:1
INSULATION BARREL



SECTION B-B
SCALE 20:1
WIRE BARREL

△6	△1	-	△8 1658537-6
△7	△1	-	1658537-5
△6	△2	SEE DETAIL Z	1658537-4
△6	△1	-	1658537-3
△5	△2	SEE DETAIL Z	1658537-2
△5	△1	-	1658537-1
FINISH	USE	LOOSE PIECE	PART NUMBER

THIS DRAWING IS A CONTROLLED DOCUMENT.

DIMENSIONS: mm [inches]	TOLERANCES UNLESS OTHERWISE SPECIFIED: 0 PLC ± - 1 PLC ± - 2 PLC ± 0.13 [.005] 3 PLC ± - 4 PLC ± - ANGLES ± -	FINISH SEE TABLE	APVD W. WALMSLEY	DATE 01-10-05	NAME	DMN G. ATTADIA - DOCKS	DATE 01-10-05	TYCO Electronics	Tyco Electronics Corporation Harrisburg, PA 17105-3608
MATERIAL PHOSPHOR BRONZE	WEIGHT -	SIZE A1	CAGE CODE 00779	DRAWING NO. 1658537	RESTRICTED TO	CUSTOMER DRAWING	SCALE -	SHEET 1 OF 1	REV A

PRODUCT SPEC: 108-40005
 APPLICATION SPEC: 114-10000
 SOCKET CONTACT, 20 DF, 20-24 AWG, AMPLIMITE