



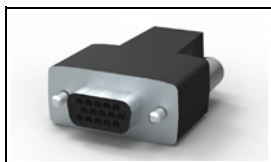
Have a Question?
 Chat with a Product
 Information Specialist

What can we help you find?

[Products](#) |
 [Industries](#) |
 [Resources](#) |
 [About TE](#) |
 [My Account](#) |
 [Innovation](#) |
 [Support Center](#)

1658688-1 Product Details

[Share](#) |
 [Print](#) |
 [Email](#)



1658688-1

TE Internal Number: 1658688-1

Active

View 3D PDF

Standard Cable Connectors

Always EU RoHS/ELV Compliant (Statement of Compliance)

Product Highlights:

- Connector
- Product Series = HDP-22 (Crimp Snap)
- 15 Positions
- With Enclosure
- Shielded

[View all Features](#)

Quick Links

- ▶ [Pricing & Availability](#)
- ▶ [Search for Tooling](#)
- ▶ [View Mating Products \(4\)](#)
- ▶ [View Receptacle Kits \(4\)](#)
- ▶ [Product Feature Selector](#)
- ▶ [Contact Us About This Product](#)

[Add to My Part List](#) |
 [Request Sample](#) |
 [Find Similar Products](#) |
 [Buy Product](#)

Documentation & Additional Information

Product Drawings:

- [SHIELDING ENCLOSURE KIT, RCPT, SIZE 1, 15 POSN, HDP-...](#) (PDF, English)

Catalog Pages/Data Sheets:

- [AMPLIMITE Subminiature D Connectors - Cable Connectors](#) (PDF, English)

Product Specifications:

- [AMPLIMITE* HDP-22 Subminiature D Connector with Remo...](#) (PDF, English)

Application Specifications:

- None Available

Instruction Sheets:

- [Shielding Hardware Enclosure Kits with AMPLIMITE* HD...](#) (PDF, English)
- [AMPLIMITE HDP-22 Connectors \(Plugs and Receptacles w...](#) (PDF, English)
- [Insertion/Extraction Tool 91285-1 and Replacement Ti...](#) (PDF, English)

CAD Files: (CAD Format & Compression Information)

- [2D Drawing](#) (DXF, Version 0)
- [3D Model](#) (IGES, Version 0)
- [3D Model](#) (STEP, Version 0)

[List all Documents](#)

Additional Information:

- [Product Line Information](#)

Related Products:

- [Tooling](#)
- [Mating Products \(4\)](#)
- [Receptacle Kits \(4\)](#)

Product Features (Please use the Product Drawing for all design activity)

Product Type Features:

- [Product Type](#) = Connector
- [Product Series](#) = HDP-22 (Crimp Snap)
- [Mating Connector Lock](#) = With
- [Mating Connector Lock Type](#) = Jackscrews
- [Shell Size](#) = 1
- [Shell Type](#) = Full Metal Shell
- [Grounding Indents](#) = Without
- [Grade](#) = Standard
- [Enclosure Material](#) = PVC
- [Color](#) = Electrodeposited Polyurethane, Black
- [Shell Material](#) = Steel
- [Shield Material](#) = Steel

Electrical Characteristics:

- [Shielded](#) = Yes

Dimensions:

- [Cable Insulation Diameter \(mm \[in\]\)](#) = 4.83 - 9.53 [0.190 - 0.375]
- [Cable Diameter \(Max.\) \(mm \[in\]\)](#) = 9.53 [0.375]

Body Features:

- [Jackscrew Material](#) = Zinc Alloy
- [Shell Plating](#) = Tin
- [Shield Plating](#) = Tin
- [Insert Material](#) = Thermoplastic

Contact Features:

- [Contact Size](#) = 22

Housing Features:

- [Enclosure](#) = With
- [Connector Style](#) = Receptacle

Configuration Features:

- [Number of Positions](#) = 15
- [Preloaded](#) = No
- [Pre-Assembled](#) = No

Industry Standards:

- [RoHS/ELV Compliance](#) = RoHS compliant, ELV compliant
- [Lead Free Solder Processes](#) = Not relevant for lead free process
- [RoHS/ELV Compliance History](#) = Always was RoHS compliant
- [Insert Flammability Rating](#) = UL 94V-0

Packaging Features:

- [Packaging Method](#) = Bulk
- [Packaging Quantity](#) = 100

Other:

- [Brand](#) = AMP
- [Comment](#) = There is a maximum Cable O.D. of 11.56 [.455] for Shielding Enclosure Expansion Tool 58241-1.; Components shipped unassembled, each part bulk-packaged.; Expansion Tool P/N 58241-4 is for use with Cable with a Maximum Outer Diameter of 9.02 [.355] .

4

3

2

1

THIS DRAWING IS UNPUBLISHED. RELEASED FOR PUBLICATION
 © COPYRIGHT - By - ALL RIGHTS RESERVED.

LOC	DIST	REVISIONS			
P	LTR	DESCRIPTION	DATE	DWN	APVD
GP	00	C	REVISED PER ECO-11-019152	25OCT2011	CJV CWR

- 1 RECEPTACLE ACCEPTS 22 DF SOCKET CONTACTS PURCHASED SEPARATELY.
- 2 ALL PARTS SHIPPED UNASSEMBLED.
- 3 FLAME RETARDANT 94V-0 RATED, STYRENE POLYOLEFIN OR PVC, BLACK.
- 4 FLAME RETARDANT 94V-0 RATED GLASS FILLED, NYLON OR POLYESTER, BLACK.
- 5 CARBON STEEL.
- 6 .000200 MIN. TIN PLATE OVER .000200 MIN. COPPER UNDERPLATE.
- 7 ELECTRODEPOSITED POLYURETHANE, BLACK.
- 8 COMPONENTS INDIVIDUALLY BULK PACKED.
- 9 ZINC ALLOY.

EXPANDING NECK ACCOMMODATES CABLE FROM .190-.375 DIA

1.355 MAX

FERRULE (MUST BE PURCHASED SEPARATELY AS REQD BY CABLE DIA)

4-40 JACKSCREW QTY:2

.125 MAX

1.467 TYP

.812 TYP

SHIELD QTY:2

ENCLOSURE

HDP-22 RCPT CONNECTOR

.984 ±.005

.630 MAX

CABLE REF

1.640 MAX

8	W/ LOGOS	1658688-1
PACKAGING	REMARKS	PART NUMBER

THIS DRAWING IS A CONTROLLED DOCUMENT.		DWN L. BAUM 02JAN04	TE TE Connectivity	
DIMENSIONS: INCHES		CHK S. BOLASH 02JAN04		
TOLERANCES UNLESS OTHERWISE SPECIFIED:		APVD M. WALMSLEY 02JAN04	NAME	
0 PLC ± -		PRODUCT SPEC	SHIELDING ENCLOSURE KIT, RCPT, SIZE 1, 15 POSN, HDP-22, AMPLIMITE™	
1 PLC ± -		APPLICATION SPEC	SIZE CAGE CODE DRAWING NO RESTRICTED TO	
2 PLC ± -		108-1268	A2 00779 C=1658688	
3 PLC ± .005		114-10001	SCALE 2:1 SHEET 1 of 1 REV C	
4 PLC ± -		WEIGHT -		
ANGLES ± 2°		CUSTOMER DRAWING		
FINISH				

1471-9 (3/11)

1658688