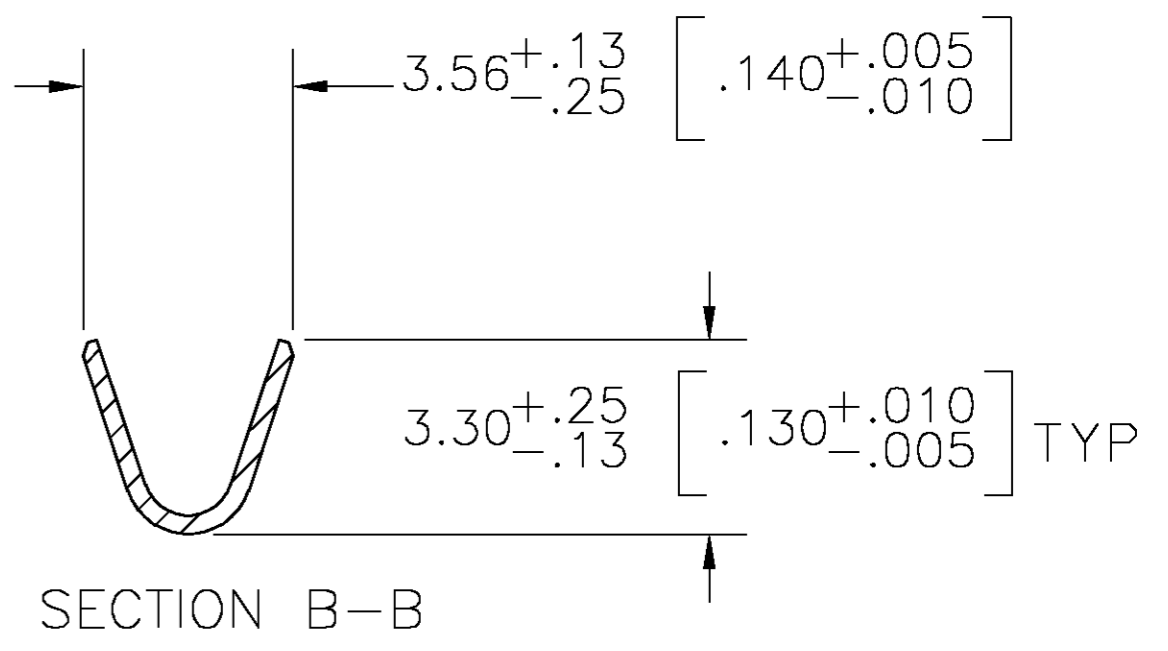
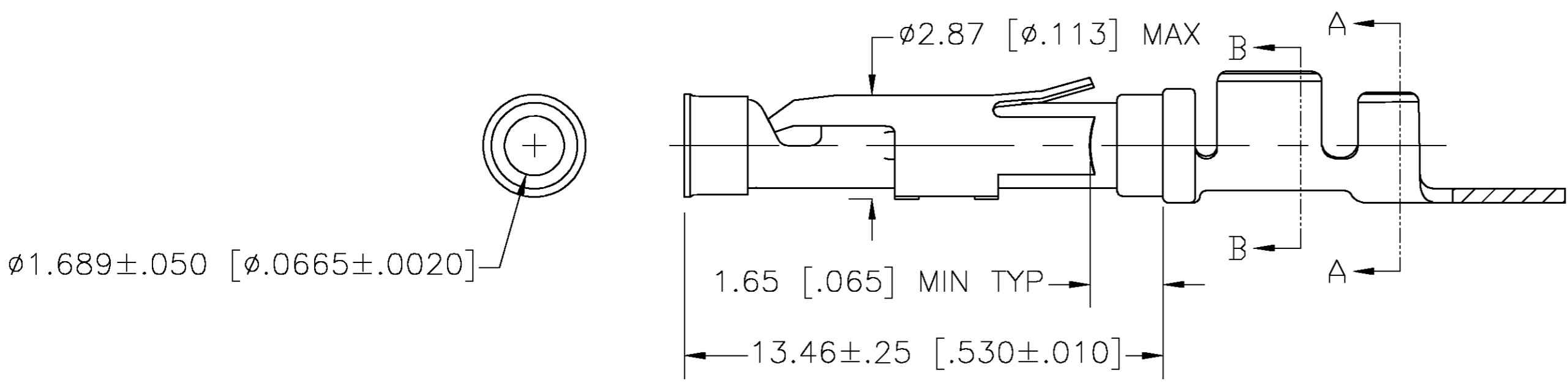
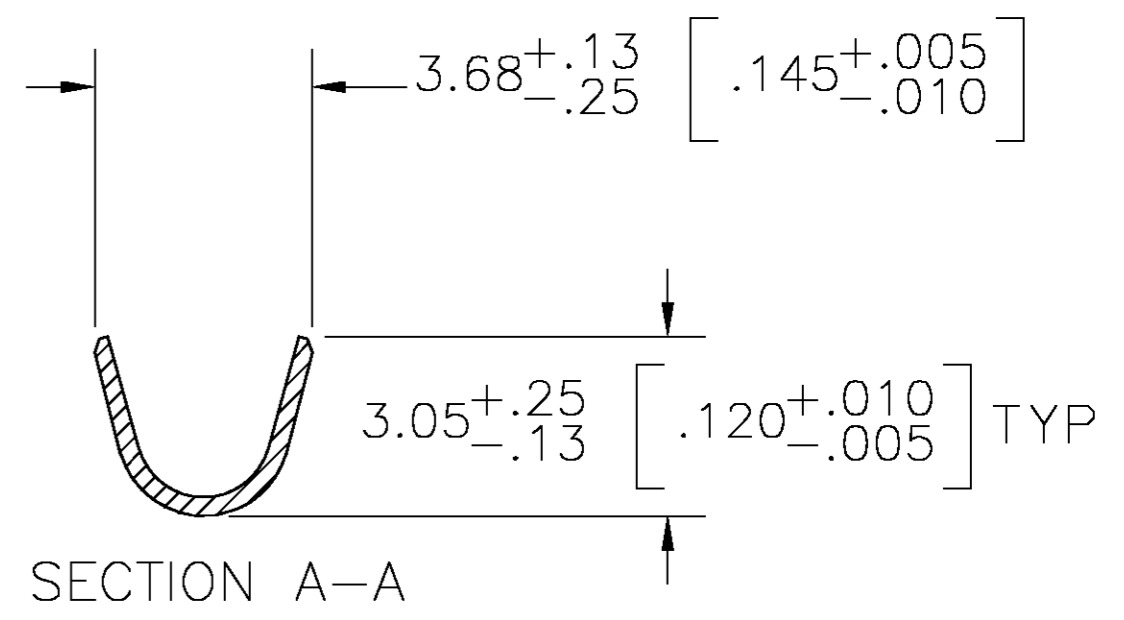
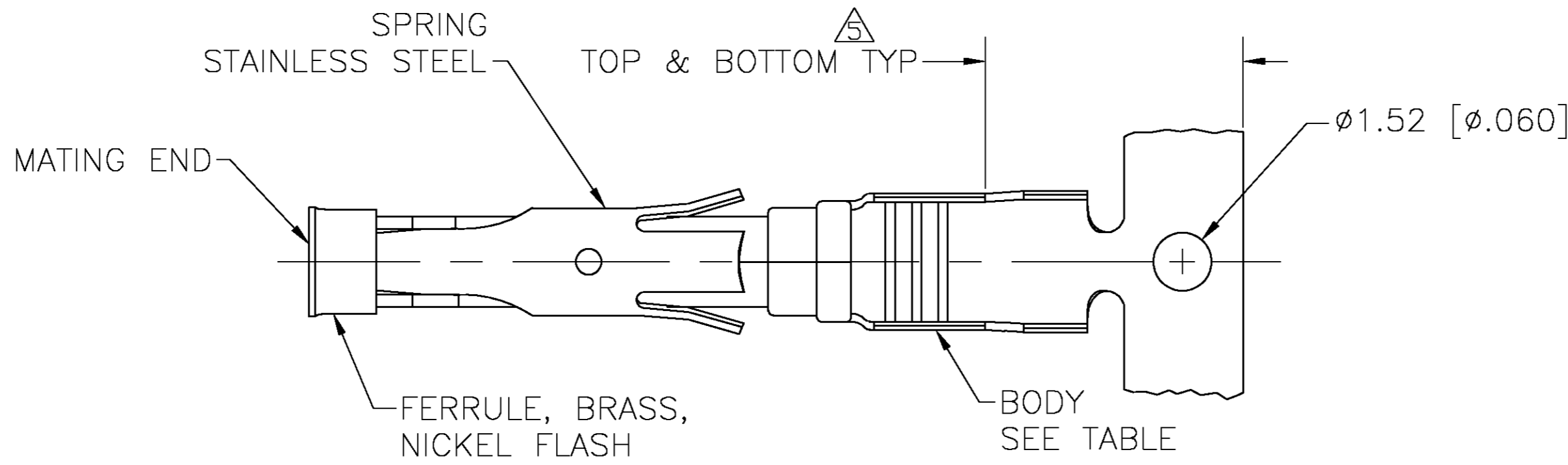


THIS DRAWING IS UNPUBLISHED. RELEASED FOR PUBLICATION
 © COPYRIGHT BY TYCO ELECTRONICS CORPORATION. ALL RIGHTS RESERVED.

LOC		DIST		REVISIONS			
P	LTR	DESCRIPTION		DATE	DWN	APVD	
		AD		REVISED PER 0G3B-0956-04	11/18/04	SS	GS



- ① 0.76µm [.000030] MIN GOLD PER MIL-G-45204 ON MATING END FOR A LENGTH OF 5.08 [.200] MIN WITH GOLD FLASH ON THE REMAINDER OVER 0.76µm [.000030] MIN NICKEL PER QQ-N-290.
- ② 1.27µm [.000050] MIN TIN-LEAD PER MIL-T-10727 OVER 0.76µm [.000030] MIN NICKEL PER QQ-N-290.
- ③ 0.76µm [.000030] MIN GOLD PER MIL-G-45204 ON MATING END FOR A LENGTH OF 5.08 [.200] MIN WITH A UNIFORM GRADIENT TO 0.25 [.000010] MIN GOLD PER MIL-G-45204 ON THE REMAINDER OVER 0.76µm [.000030] MIN NICKEL PER QQ-N-290.
- ④ 0.38µm [.000015] MIN GOLD PER MIL-G-45204 ON MATING END FOR A LENGTH OF 5.08 [.200] MIN WITH GOLD FLASH ON THE REMAINDER OVER 0.76µm [.000030] MIN NICKEL PER QQ-N-290.
- ⑤ GOLD PLATING NEED NOT APPEAR IN THIS AREA.
- ⑥ REVERSE REELED FOR MINI-APPLICATOR.
- ⑦ WIRE RANGE 18-14 AWG. INSULATION RANGE 2.03[.080]-2.54[.100].
- ⑧ 0.38µm [.000015] MIN GOLD PER MIL-G-45204 ON MATING END FOR A LENGTH OF 5.08 [.200] MIN, 1.27µm [.000050] MIN TIN-LEAD PER MIL-T-10727 FOR A LENGTH OF 5.69 [.224] MIN ON OPPOSITE END, BOTH OVER 1.27µm [.000050] MIN NICKEL PER QQ-N-290 ON ENTIRE CONTACT.
- ⑨ 1.27µm [.000050] MIN TIN PER MIL-T-10727 OVER 0.76µm [.000030] MIN NICKEL PER QQ-N-290.

⑥	⑨	BRASS	-	2-66358-2
⑥	⑨	CU-NI ALLOY	1-66360-6	2-66358-1
⑥	②	CU-NI ALLOY	1-66360-5	2-66358-0
⑥	①	CU-NI ALLOY	1-66360-4	1-66358-9
⑥	⑨	PHOSPHOR BRONZE	-	1-66358-8
STANDARD	⑨	BRASS	1-66360-2	1-66358-7
⑥	⑨	BRASS	1-66360-2	1-66358-6
OBSOLETE	⑥	BRASS	66360-9	1-66358-5
⑥	②	BRASS	-	1-66358-4
⑥	①	PHOSPHOR BRONZE	66360-8	1-66358-3
⑥	②	PHOSPHOR BRONZE	66360-7	1-66358-2
⑥	①	BRASS	66360-4	1-66358-0
⑥	②	BRASS	66360-3	66358-9
⑥	②	BRASS	66360-2	66358-6
⑥	②	BRASS	66360-1	66358-5
STANDARD	①	BRASS	66360-4	66358-4
OBSOLETE	STANDARD	BRASS	66360-3	66358-3
STANDARD	②	BRASS	66360-2	66358-2
STANDARD	③	BRASS	66360-1	66358-1
REELING	BODY FINISH	BODY MATERIAL	LOOSE PIECE REF	PART NO.

THIS DRAWING IS A CONTROLLED DOCUMENT.

DWN	V. FURLER	23JUL2003	Tyco Electronics Corporation Harrisburg, PA 17105
CHK	G. STEINHAUER	23JUL03	
APVD	G. STEINHAUER	23JUL03	
PRODUCT SPEC			
DIMENSIONS: MM [INCHES] TOLERANCES UNLESS OTHERWISE SPECIFIED: 0 PLC ± - 1 PLC ± - 2 PLC ± 0.13 [.005] 3 PLC ± - 4 PLC ± - ANGLES ± - FINISH SEE CALLOUTS			NAME SOCKET ASSEMBLY, .062, TYPE III+
MATERIAL	SEE CALLOUTS	WEIGHT	SIZE A2 CAGE CODE 00779 DRAWING NO C=66358 RESTRICTED TO -
CUSTOMER DRAWING			SCALE 8:1 SHEET 1 OF 1 REV AD