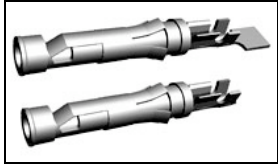


1-66360-3 Product Details



1-66360-3

TE Internal Number: 1-66360-3



Multimate

 Always EU RoHS/ELV Compliant (Statement of Compliance)

Product Highlights:

- Contact Type = Socket
- Contact Classification = Signal
- Type III+ Series
- Bright Tin Contact Plating, Mating Area, Material
- Wire Range = 0.80-2.00² [18-14] mm [AWG]

Documentation & Additional Information

Product Drawings:

- [SOCKET ASSEMBLY, LOOSE PIECE, TYPE III+](#) (PDF, English)

Catalog Pages/Data Sheets:

- None Available

Product Specifications:

- None Available

Application Specifications:

- None Available

Instruction Sheets:

- None Available

CAD Files: (CAD Format & Compression Information)

- [2D Drawing](#) (DXF, Version H)
- [3D Model](#) (IGES, Version H)
- [3D Model](#) (STEP, Version H)

Additional Information:

- [Product Line Information](#)

Additional Product Images:

- [Line Drawing](#)

Related Products:

- [Tooling](#)

Product Features (Please use the Product Drawing for all design activity)

Product Type Features:

- Series = Type III+
- [Insulation Support](#) = Yes
- [Termination Method to Wire/Cable](#) = Crimp
- Wire/Cable Type = Discrete Wire
- Grade = Commercial

Electrical Characteristics:

- High Current = No

Termination Features:

- [Termination End Plating](#) = Bright Tin

Dimensions:

- Pin Diameter (mm [in]) = 1.57 [0.062]

Body Features:

- [Wire Range \(mm \[AWG\]\)](#) = 0.80-2.00² [18-14]
- Spring Material = Stainless Steel
- Used With = G Series Connectors, M Series Connectors, CPC Connectors

Contact Features:

- Contact Type = Socket
- Contact Classification = Signal
- [Contact Plating, Mating Area, Material](#) = Bright Tin
- [Contact Base Material](#) = Brass
- [Contact Size](#) = 16

Industry Standards:

- [RoHS/ELV Compliance](#) = RoHS compliant, ELV compliant
- [Lead Free Solder Processes](#) = Not relevant for lead free process
- RoHS/ELV Compliance History = Always was RoHS compliant

Conditions for Usage:

- [Accepts Wire Insulation Diameter, Range \(mm \[in\]\)](#) = 2.03 - 2.54 [0.080 - 0.100]
- [Applies To](#) = Wire/Cable
- Test Current (A) = 13.0

Packaging Features:

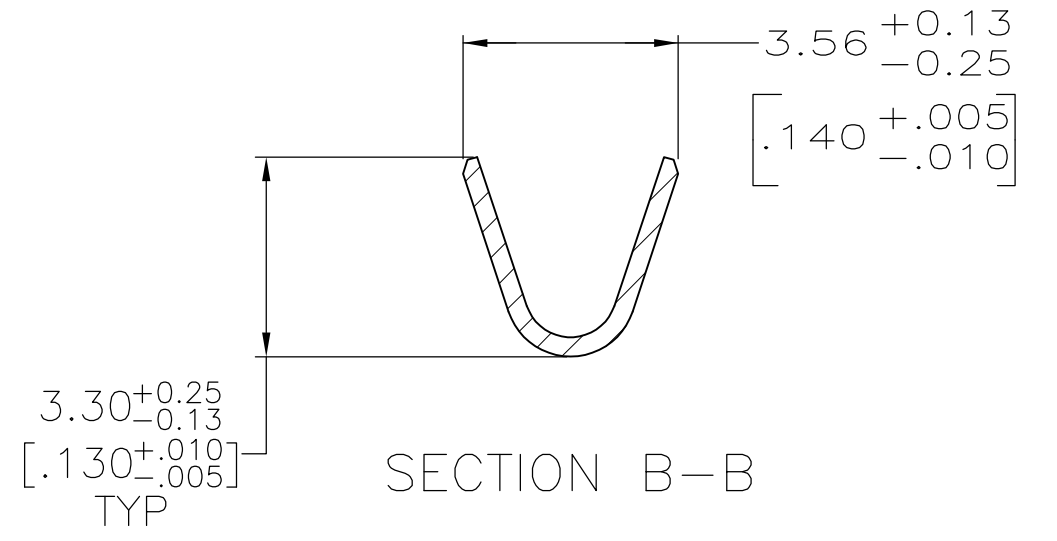
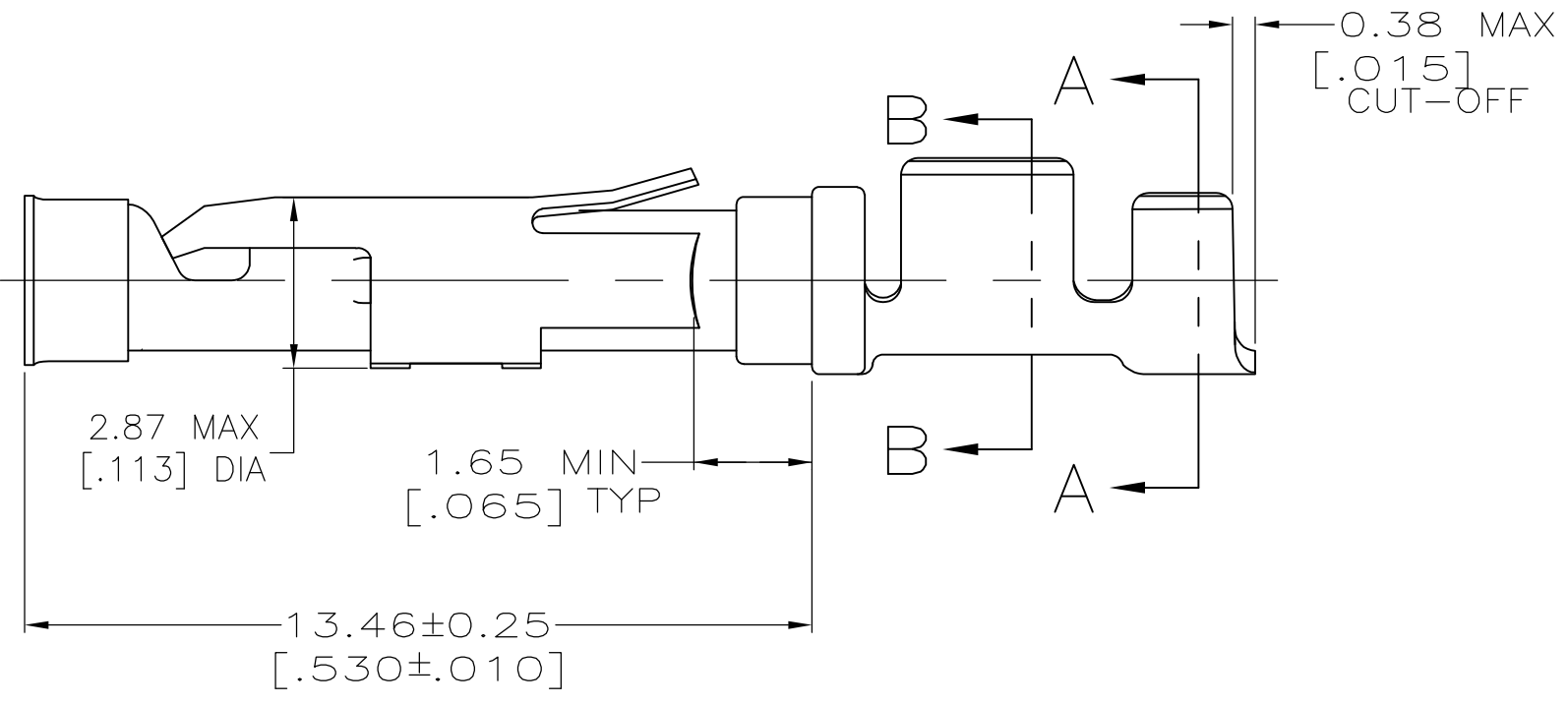
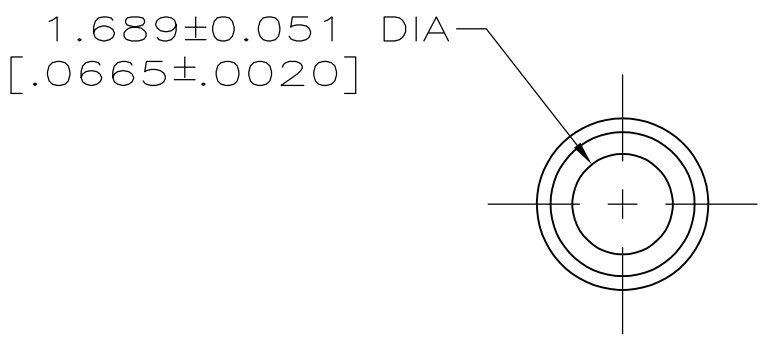
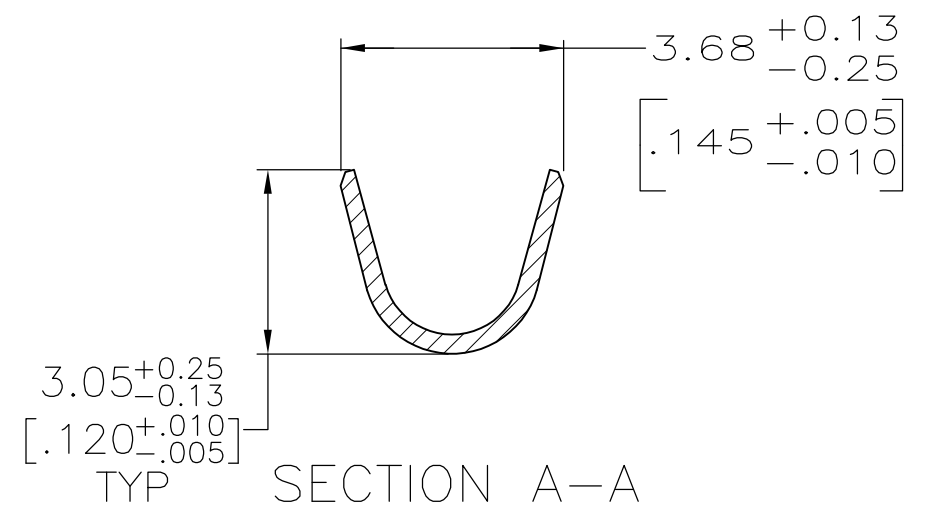
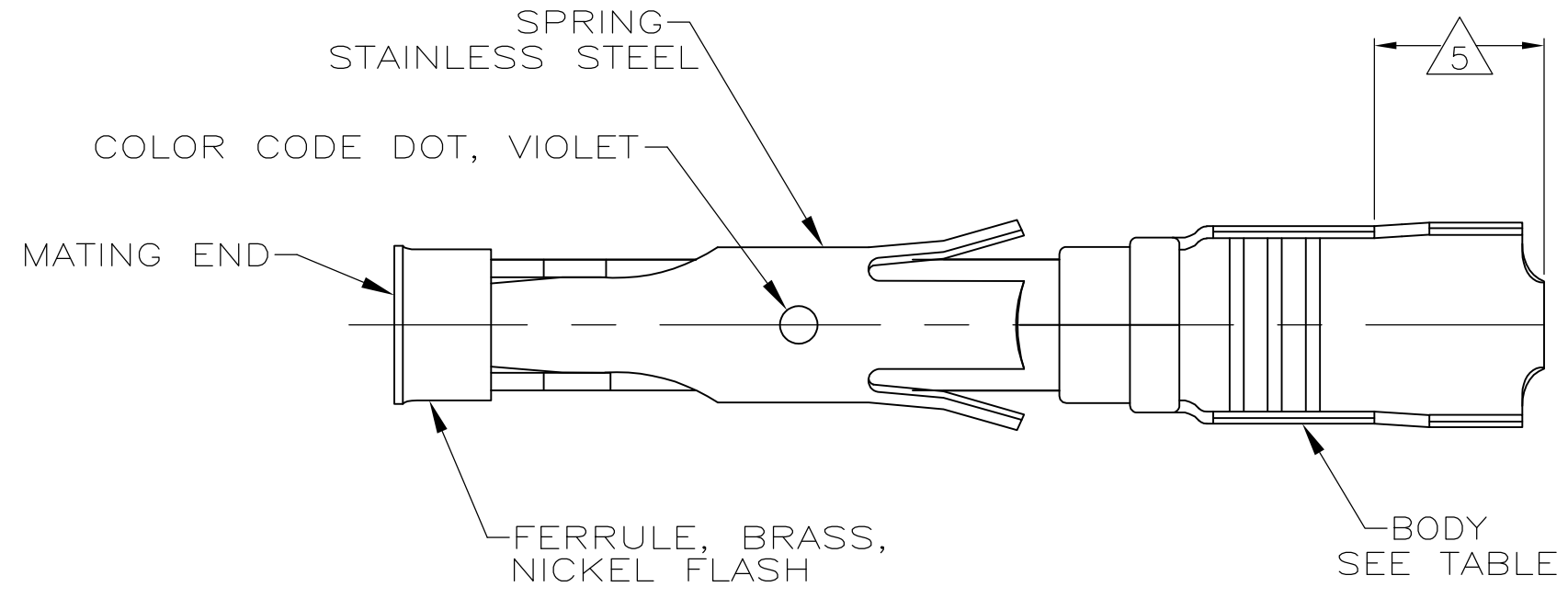
- [Packaging Method](#) = Loose Piece
- Packaging Quantity = 100/Box

Other:

- Brand = AMP
- Comment = Overall insulation crimp diameter, including crimp barrel, must not exceed 3.18 [.125].; Insertion Tool No. 91002-1 (for Insulation Dia. 1.78 [.070] or less), No. 200893-2 (for Insulation Dia. .090 [2.29] max.) Extraction Tool No. 305183.

THIS DRAWING IS UNPUBLISHED. RELEASED FOR PUBLICATION
 © COPYRIGHT - By - ALL RIGHTS RESERVED.

LOC	DIST	REVISIONS					
FT	0	P	LTR	DESCRIPTION	DATE	DWN	APVD
		J		REVISED PER ECO-12-012320	05JUL12	KH	MZ



- 1 0.76µm [.000030] MIN GOLD PER MIL-G-45204 ON MATING END FOR A LENGTH OF 5.08 [.200] MIN WITH GOLD FLASH ON THE REMAINDER OVER 0.76µm [.000030] MIN NICKEL PER QQ-N-290.
- 2 1.27µm [.000050] MIN TIN-LEAD PER MIL-T-10727 OVER 0.76µm [.000030] MIN NICKEL PER QQ-N-290.
- 3 0.76µm [.000030] MIN GOLD PER MIL-G-45204 ON MATING END FOR A LENGTH OF 5.08 [.200] MIN WITH A UNIFORM GRADIENT TO 0.25µm [.000010] MIN GOLD PER MIL-G-45204 ON THE REMAINDER OVER 0.76µm [.000030] MIN NICKEL PER QQ-N-290.
- 4 0.38µm [.000015] MIN GOLD PER MIL-G-45204 ON MATING END FOR A LENGTH OF 5.08 [.200] MIN WITH 1.27µm [.000050] MIN MATTE TIN PLATE IN WIRE CRIMP AREA, BOTH OVER 0.76µm [.000030] MIN NICKEL PER QQ-N-290.
- 5 GOLD PLATING NOT REQUIRED IN THIS AREA.
- 6 WIRE RANGE 18-16 AWG. INSULATION RANGE 2.03 [.080]-2.54 [.100].
- 7 0.38µm [.000015] MIN GOLD PER MIL-G-45204 ON MATING END FOR A LENGTH OF 5.08 [.200] MIN, 1.27µm [.000050] MIN TIN-LEAD PER MIL-T-10727 FOR A LENGTH OF 5.69 [.224] MIN ON OPPOSITE END, BOTH OVER 1.27µm [.000050] MIN NICKEL PER QQ-N-290 ON ENTIRE CONTACT.
- 8 1.27µm [.000050] MIN TIN PER MIL-T-10727 OVER 0.76µm [.000030] MIN NICKEL PER QQ-N-290.
- 9 0.76µm [.000030] MIN GOLD PER MIL-G-45204 ON MATING END FOR A LENGTH OF 5.08 [.200] MIN WITH 1.27µm [.000050] MIN MATTE TIN PLATE IN WIRE CRIMP AREA, BOTH OVER 0.76µm [.000030] MIN NICKEL PER QQ-N-290.

	STANDARD	8	CU-NI ALLOY	2-66358-1	1-66360-6
	STANDARD	2	CU-NI ALLOY	2-66358-0	1-66360-5
	STANDARD	1	CU-NI ALLOY	1-66358-9	1-66360-4
	SMALL PACK	8	BRASS	1-66358-6	1-66360-3
	STANDARD	8	BRASS	1-66358-6	1-66360-2
	SMALL PACK	9	BRASS	66358-4	1-66360-1
	SMALL PACK	2	BRASS	66358-2	1-66360-0
OBSOLETE	STANDARD	7	BRASS	1-66358-5	66360-9
	STANDARD	1	PHOSPHOR BRONZE	1-66358-3	66360-8
OBSOLETE	STANDARD	2	PHOSPHOR BRONZE	1-66358-2	66360-7
	STANDARD	9	BRASS	66358-4	66360-4
	STANDARD	4	BRASS	66358-3	66360-3
	STANDARD	2	BRASS	66358-2	66360-2
	STANDARD	3	BRASS	66358-1	66360-1
	PACKAGING	BODY FINISH	BODY MATERIAL	STRIP P/N REF	PART NUMBER

THIS DRAWING IS A CONTROLLED DOCUMENT.

DIMENSIONS: mm [INCHES]	TOLERANCES UNLESS OTHERWISE SPECIFIED:	DWN L.SIPE 06/03/92	 TE Connectivity
	0 PLC ± -	CHK W.LENKER 6-11-92	
	1 PLC ± -	APVD G.STEINHAUER 7-8-92	
	2 PLC ± 0.13 [.005]	NAME	
MATERIAL SEE CALLOUTS	FINISH SEE TABLE	PRODUCT SPEC	SOCKET ASSEMBLY, LOOSE PIECE, TYPE III+
		APPLICATION SPEC	SIZE A2 CAGE CODE 00779 DRAWING NO C=66360
		WEIGHT -	RESTRICTED TO -
		CUSTOMER DRAWING	SCALE 8:1 SHEET 1 OF 1 REV J