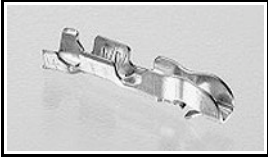


170262-1 Product Details

[Share](#) [Print](#) [Email](#)




170262-1

TE Internal Number: 170262-1

 Active

 [View 3D PDF](#)

Crimp Termination

-  Always EU RoHS/ELV Compliant
(Statement of Compliance)

Product Highlights:

- Contact
- Contact Type = Socket
- Applies To Wire/Cable
- Without PCB Mount Retention
- Wire Range = 0.12-0.50² [26-20] mm [AWG]

[View all Features](#)

Quick Links

- ▶ [Pricing & Availability](#)
- ▶ [Search for Tooling](#)
- ▶ [View Housings \(80\)](#)
- ▶ [Product Feature Selector](#)
- ▶ [Contact Us About This Product](#)

[Add to My Part List](#)

[Request Sample](#)

[Find Similar Products](#)

[Buy Product](#)

Documentation & Additional Information

Product Drawings:

- [CONTACT, AMP EI SERIES CONNECTOR](#) (PDF, English)

Catalog Pages/Data Sheets:

- None Available

Product Specifications:

- [AMP EI Series, Connector](#) (PDF, Japanese)

Application Specifications:

- [Crimping of AMP EI Series Connector Contacts](#) (PDF, Japanese)

Instruction Sheets:

- [AMP "EI" Series Connector](#) (PDF, English)

CAD Files: (CAD Format & Compression Information)

- [2D Drawing](#) (DXF, Version N)
- [3D Model](#) (IGES, Version N)
- [3D Model](#) (STEP, Version N)

[List all Documents](#)

Related Products:

- [Tooling](#)
- [Housings \(80\)](#)

Product Features (Please use the Product Drawing for all design activity)

Product Type Features:

- [Product Type](#) = Contact
- [PCB Mount Retention](#) = Without
- [Wire Insulation Diameter \(mm \[in\]\)](#) = 1.09 - 1.91 [0.043 - 0.075]

Body Features:

- [Wire Range \(mm \[AWG\]\)](#) = 0.12-0.50² [26-20]

Contact Features:

- [Contact Type](#) = Socket
- [Contact Base Material](#) = Brass
- [Contact Plating, Mating Area, Material](#) = Pre-Tin

Industry Standards:

- [RoHS/ELV Compliance](#) = RoHS compliant, ELV compliant
- [Lead Free Solder Processes](#) = Not relevant for lead free process
- [RoHS/ELV Compliance History](#) = Always was RoHS compliant

Conditions for Usage:

- [Applies To](#) = Wire/Cable
- [For Use With](#) = Standard Profile Housing

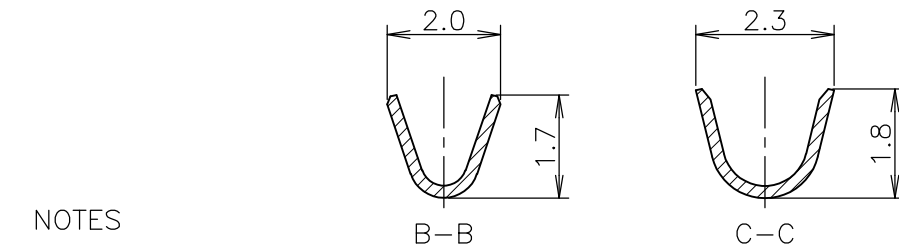
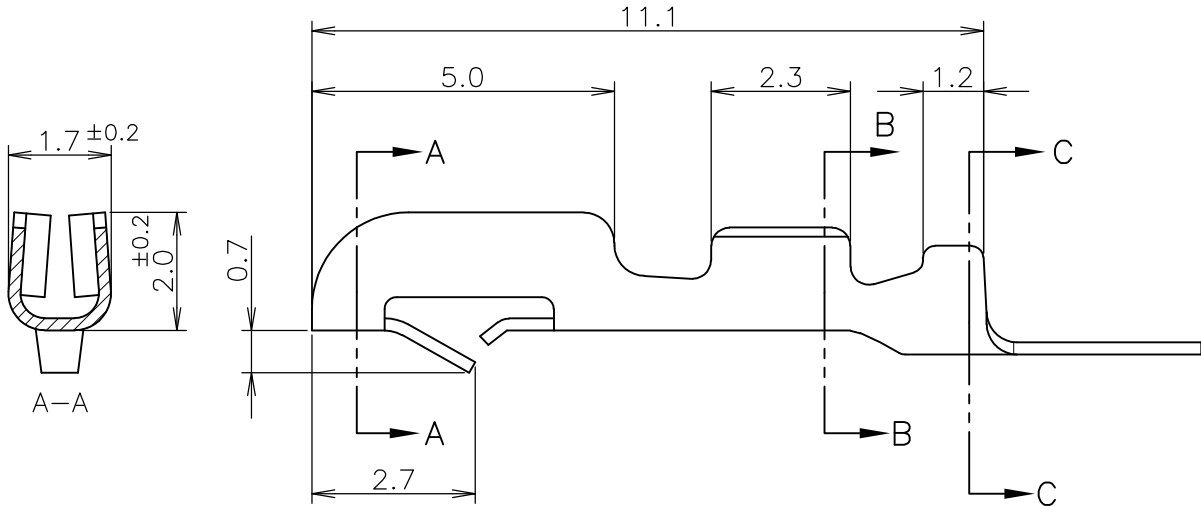
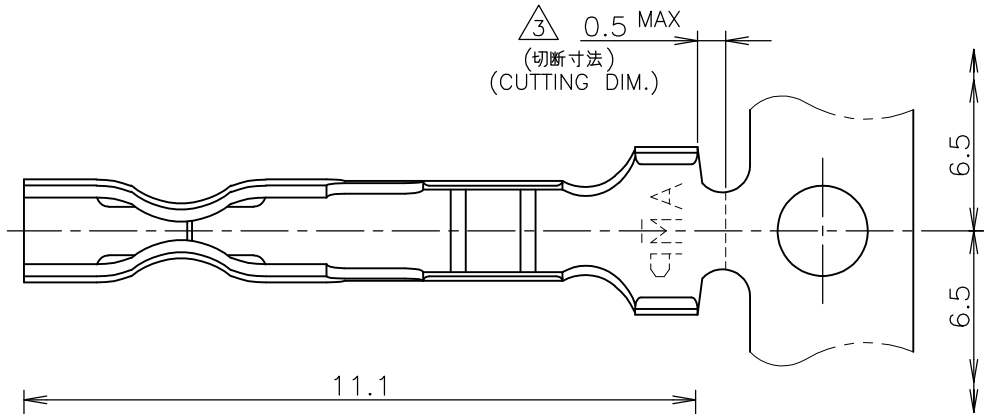
Packaging Features:

- [Packaging Method](#) = Strip

Other:

- [Brand](#) = AMP

LOC J	DIST /	REVISIONS 変更			DATE	DWN	APVD
P	LTR	DESCRIPTION			13APR11	RK	HMR
	E1	REVISED PER ECO-11-005294					



NOTES

- HOUSINGS, P/N: 171822 AND 171880 ARE USED.
- L/P CONTACT P/N: 170204-1
- △ HAND TOOL P/N: 722560-1

筆記

- 使用ハウジングは製品型番：171822及び171880
- L/P端子 製品型番：170204-1
- △ 適用手動工具 製品型番：722560-1

GENERAL TOLERANCE
一般公差

10 ≥ : ± 0.4
30 ≥ > 10 : ± 0.4
100 ≥ > 30 : ± 0.4
ANGLES: ± 1°

WIRE RANGE 抱合電線断面積	(AWG26~20) 0.14~0.52 mm ²	INSULATION DIA 被覆外径	1.1~1.9 mm ϕ
-----------------------	---	------------------------	-------------------

DIMENSIONS:
単位： 耗
mm

DWN	H.HOSHINO	05DEC1997
CHK	K.ASAKAWA	08DEC1997
APVD	S.KUBOUCHI	08DEC1997

MATERIAL	0.2mm THICKNESS 材料	BRASS	FINISH 仕上	PRE-TIN
----------	-----------------------	-------	--------------	---------



TE Connectivity

PRODUCT SPEC
製品規格
108-5118

NAME
名称
CONTACT, AMP EI SERIES CONNECTOR
コンタクト AMP EI シリーズ コネクタ

APPLICATION SPEC
取付適用規格
114-5035

SIZE	CAGE CODE	DRAWING NO 番号	RESTRICTED TO
A4	00779	170262-1	

WEIGHT

CUSTOMER DRAWING

SCALE 尺度	8:1	SHEET	1 OF 1	REV	E1
-------------	-----	-------	--------	-----	----

THIS DRAWING IS UNPUBLISHED. DEC 1, 1997.

ALL RIGHTS RESERVED.

© COPYRIGHT 1997 By -

0 PLC	± -
1 PLC	± -
2 PLC	± -
3 PLC	± -
4 PLC	± -
ANGLES	± -

