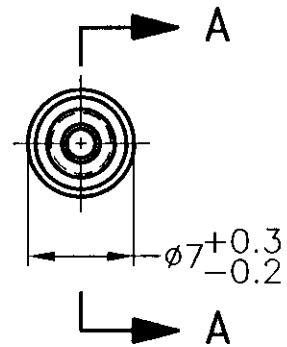
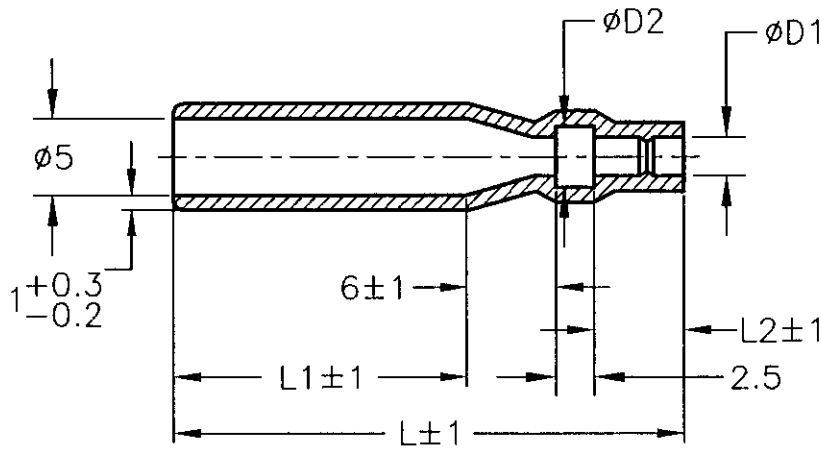


LOC	DIST	REVISIONS 変更						
—	—	P	LTR	DESCRIPTION	ECN	DATE	DWN	APVD
		B1		REDRAWN W/CHANGE	FJ00-1162-00	31 AUG 00	AY	KB



X-170892-X	SEE 170892
X-170893-X	SEE 170893
X-170887-X	SEE 170887
X-170888-X	SEE 170888
X-170890-X	SEE 170890
X-170891-X	SEE 170891
X-170823-X	SEE 170823
AMP PN	REMARK

1. 材質：SS-108 (一般)
2. 一般公差：±0.5
3. 適用製品規格は無し

△ 品川商工発行のカタログと本図で寸法が異なる場合は本図を優先する。

1. MATERIAL:SS-108(GENERAL)
2. GENERAL TOLERANCE: ±0.5
3. APPLICABLE PRODUCT SPEC NOT AVAILABLE

△ IN THE EVENT OF CONFLICT BETWEEN THE REQUIREMENTS OF THIS CUSTOMER DRAWING AND THE SHINAGAWA SHOKO CO LTD CATALOG THIS CUSTOMER DRAWING SHALL TAKE PRECEDENCE

CLEAR	26	2	15.5	4	2	215020	170889-4
					3.5	215035	170889-3
	34	6	19.5	4.5	3.2	215032	170889-2
				4	2.5	215025	170889-1
COLOR	L	L2	L1	φ d2	φ d1	△ SHINAGAWA SHOKO PN	AMP PN

WIRE RANGE 総合電線断面積	INSULATION DIA 被覆外径
—	—

DWN	31 AUG 00	A.YAMAGUCHI
CHK	31 AUG 00	D.MATSUURA
APVD	31 AUG 00	K.BETSUI
PRODUCT SPEC 製品規格	—	
APPLICATION SPEC 取付適用規格	—	
WEIGHT	—	

MATERIAL 材料	FINISH 仕上
—	—

AMP Tyco Electronics AMP K.K.
Kawasaki, Japan

NAME
名称
CONNECT SLEEVE FOR
5DIA SERIES SHUR PLUG RECEPTACLE

SIZE	CAGE CODE	DRAWING NO 番号	RESTRICTED TO
A4	00779	170889	—

CUSTOMER DRAWING	SCALE 尺度	2:1	SHEET	1	OF	1	REV	B1
------------------	-------------	-----	-------	---	----	---	-----	----

RELEASED FOR PUBLICATION

ALL RIGHTS RESERVED.

© COPYRIGHT BY TYCO ELECTRONICS CORPORATION.

THIS DRAWING IS UNPUBLISHED.

00/08/31 12:06