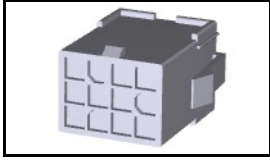


## 172333-1 Product Details

[Share](#) [Print](#) [Email](#)




**172333-1**

TE Internal Number: 172333-1

 Active

[View 3D PDF](#)

**.163" Centerline, 600 V, 9.5 A max.**

 Always EU RoHS/ELV Compliant  
(Statement of Compliance)

**Product Highlights:**

- Mini-Universal MATE-N-LOK Product Line
- Wire-to-Panel, Wire-to-Wire
- Applies To Panel, Applies To Wire/Cable
- Connector
- Glow Wire Rating = Standard Part - Not Glow Wire

[View all Features](#)

**Quick Links**

- ▶ [Pricing & Availability](#)
- ▶ [Search for Tooling](#)
- ▶ [View Mating Products \(1\)](#)
- ▶ [View Contacts \(85\)](#)
- ▶ [Product Feature Selector](#)
- ▶ [Contact Us About This Product](#)

[Add to My Part List](#) [Request Sample](#) [Find Similar Products](#)

[Buy Product](#)

### Documentation & Additional Information

**Product Drawings:**

- [MINI UNIVERSAL MATE N LOK CONN. CAP HOUSING 12 POS. ...](#) (PDF, English)

**Catalog Pages/Data Sheets:**

- [1-1773458-0\\_MINI\\_UNIVERSAL\\_MATE\\_N\\_LOK\\_CONNECTOR\\_SYST...](#) (PDF, English)
- [SOFT\\_SHELL\\_PIN\\_AND\\_SOCKET\\_CONNECTORS\\_CATALOG](#) (PDF, English)

**Product Specifications:**

- [Mini-Universal MATE-N-LOK Connector\(UL 94V-2\)](#) (PDF, English)

**Application Specifications:**

- [Mini-Universal MATE-N-LOK Connectors](#) (PDF, English)

**Instruction Sheets:**

- [Mini-Universal MATE-N-LOK Connectors](#) (PDF, English)

**CAD Files:** (CAD Format & Compression Information)

- [2D Drawing](#) (DXF, Version A1)
- [3D Model](#) (IGES, Version A1)
- [3D Model](#) (STEP, Version A1)

[List all Documents](#)

**Additional Information:**

- [Product Line Information](#)

**Related Products:**

- [Tooling](#)
- [Mating Products \(1\)](#)
- [Contacts \(85\)](#)

### Product Features (Please use the Product Drawing for all design activity)

**Product Type Features:**

- Product Line = Mini-Universal MATE-N-LOK
- Product Type = Connector
- Connector Type = Housing
- PCB Mount Retention = Without
- Sealed = No
- CSA File Number = LR 7189

**Mechanical Attachment:**

- Contact Retention = Without
- Mating Retention Type = Locking Tab
- Panel Mount Retention = With
- Panel Mount Retention Type = Mounting Ear(s)

**Configuration Features:**

- Number of Rows = 3
- Number of Positions = 12
- Strain Relief = Without

**Industry Standards:**

- [RoHS/ELV Compliance](#) = RoHS compliant, ELV compliant
- [Lead Free Solder Processes](#) = Not relevant for lead free process
- [RoHS/ELV Compliance History](#) = Always was RoHS compliant
- [VDE Tested](#) = Yes
- [Agency/Standard](#) = UL, CSA

**Electrical Characteristics:**

- Operating Voltage Reference = AC/DC
- Operating Voltage (VAC) = 600
- Operating Voltage (VDC) = 600

**Dimensions:**

- Panel Thickness (mm [in]) = 0.80 - 2.00 [0.031 - 0.078]

**Body Features:**

- Used With = Plug Housing
- Mating Retention = With
- Row-to-Row Spacing (mm [in]) = 4.14 [0.163]
- Assembly Integration Feature = Without

**Contact Features:**

- Contact Type = Pin
- Contact Layout = Matrix
- Shunts/Shorting Bars = Without
- Multiple Contact Types = Without

**Housing Features:**

- Connector Style = Receptacle
- Housing Material = Nylon 6/6
- Housing Color = Natural
- Mating Alignment = With
- Mating Alignment Type = Polarization
- Centerline (mm [in]) = 4.14 [0.163]

- UL Rating = Recognized
- CSA Rating = Certified
- UL File Number = E28476
- UL Flammability Rating = UL 94V-2

**Environmental:**

- Operating Temperature (°C [°F]) = -20 - +105 [-4 - +221]

**Conditions for Usage:**

- Applies To = Panel, Wire/Cable
- Glow Wire Rating = Standard Part - Not Glow Wire

**Operation/Application:**

- Application Use = Wire-to-Panel, Wire-to-Wire

**Packaging Features:**

- Packaging Method = Bag
- Packaging Quantity = 500

**Other:**

- Brand = AMP

**Corporate Information**

- [About TE](#)
- [Investors](#)
- [News Room](#)
- [Supplier Portal](#)
- [Careers](#)
- [Terms & Conditions](#)
- [Privacy Policy](#)
- [AODA Accessibility Policy](#)
- [AODA Multi-Year Accessibility Plan](#)

**Quick Links**

- [Distributor Inventory](#)
- [Product Cross Reference](#)
- [Documents & Drawings](#)
- [Product Compliance Support Center](#)
- [Site Map](#)

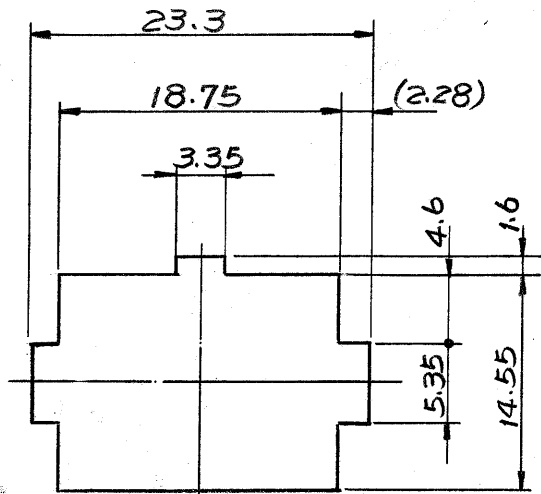
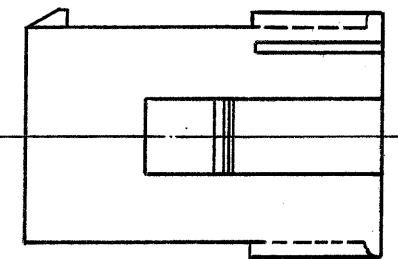
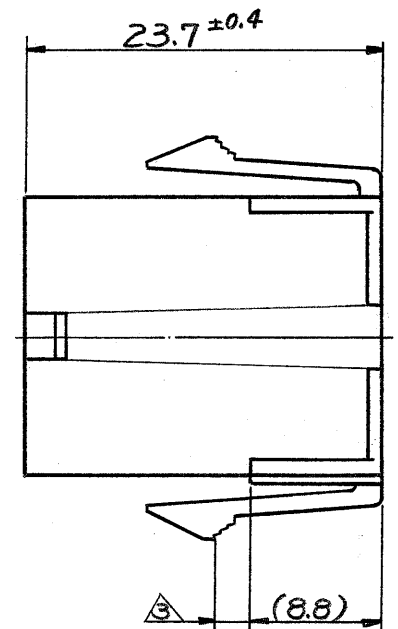
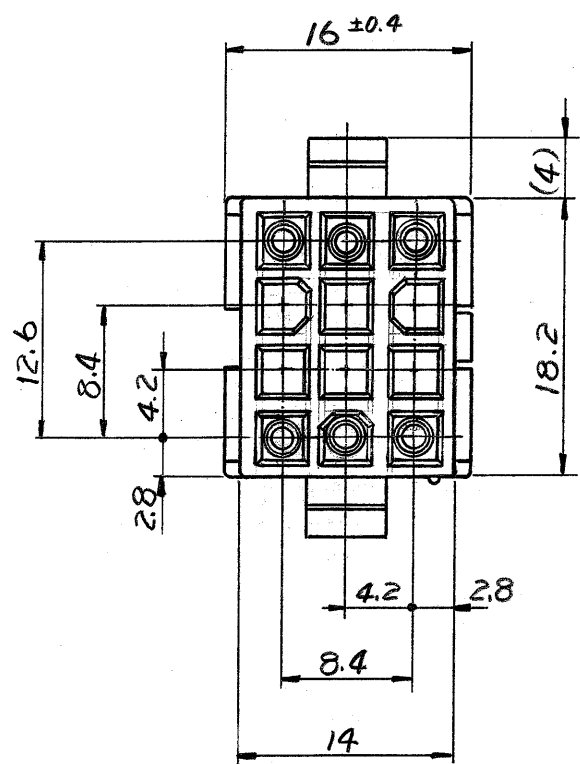
**Customer Support**

- [Email or Chat With Us](#)
- [Find a Phone Number](#)
- [Knowledge Base](#)
- [Manage Your Account](#)

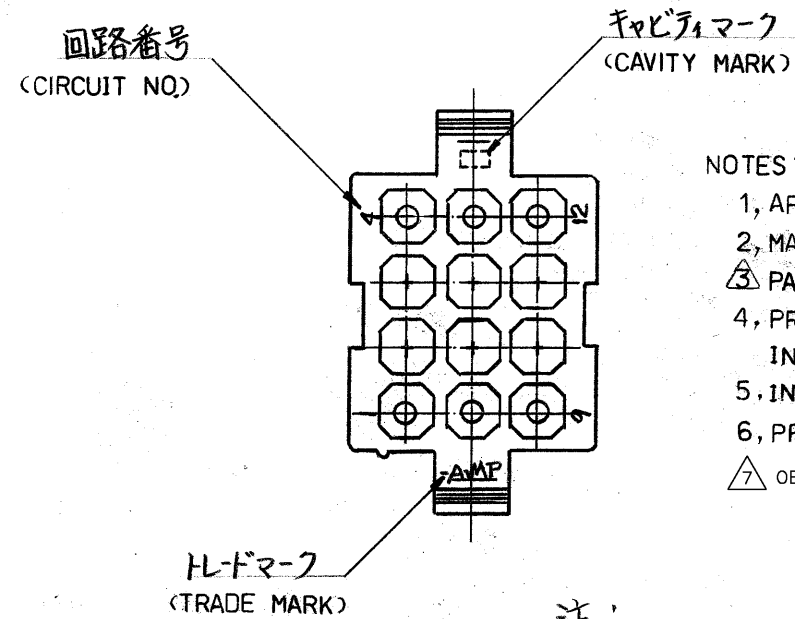
**Keep Me Informed**

© 1980 年 日本エー・エム・ピー株式会社  
AMP 社の諸製品は特許又は特許出願中

© 1980 BY AMP (Japan) Ltd.  
ALL RIGHTS RESERVED. AMP  
PRODUCTS COVERED BY PATENTS  
AND/OR PATENTS PENDING



寸法公差は 0.20  
(TOLERANCE: ±0.2)  
パネル取付穴 (DIMENSION OF PANEL)



- NOTES:
- 1, APPLIED CONTACT P/N: 170359, 170360, 17361, 170362
  - 2, MATING CONN: PLUG HOUSING P/N 172341
  - 3 PANEL THICKNESS: 0.8 ~ 2.0 mm
  - 4, PRESS DIRECTION OF PANEL MUST BE SAME AS HOUSING INSERTED DIRECTION.
  5. INSTRUCTION SHEET: IS - 105J
  - 6, PRODUCT SPEC: 108 - 5151
  - 7 OBSOLETE PARTS: OBSOLETE CIS STREAMLINING PER D.RENAUD/D.SINISI

- 注:
1. 使用端子型番は 170359, 170360, 170361, 170362
  2. 嵌合相手ハウジング型番は 172341.
  3. 適用パネル厚 0.8 ~ 2.0 mm
  4. 取付穴打抜方向とハウジングの挿入方向は同じとする.
  5. 取扱説明書: IS-105J
  6. 適用製品仕様書: 108-5151

OBSOLETE	黄 (YELLOW)	1	172333	-4
	黒 (BLACK)	1		-9
	青 (BLUE)	1		-6
	緑 (GREEN)	1		-5
	赤 (RED)	1		-2
	自然色 (NATURAL)		172333	-1
	色 (COLOR)			型番 (P/N)

A2	ECO-10-000444	KK	AEG	JAN 10
A1	黄色追加 J-10297	T.O	M.S	9/28
A	変更 J-9972	A.K		8/31
0	変更 J81-5998	2.3	Z.T	4/21
0	作成 J81-5987	X.Y	Z.T	3/6
LTR.	変更 (REVISION RECORD)	DR.	CHK.	DATE

材料 (MATERIAL) 6/6 ナイロン (UL94V-2) (NYLON 6/6 UL94V-2)	一般公差 TOLERANCE ± 0.3 EXCEPT ± 1.0 AS NOTED	日本エー・エム・ピー株式会社 TOKYO, JAPAN 名称 (NAME) MINI-UNIVERSAL MATE-N-LOK CONN CAP HOUSING 12 Pos. (UL94V-2) 12 極 ミニユニバーサル Xイテン ロック コネクタ キャップハウジング (UL94V-2) SIZE LOC 番号 (NO.) B J C-172333 尺度 (SCALE) REV. A2 SHEET # 2:1
仕上 (FINISH) 色: 表参照 HOUSING COLOR: SEE TABLE	DR. K. yama 20/81 CHK. A. taniguchi 4/21/81 DE. APP.	

単位: 概 DIMENSIONS IN MM DO NOT SCALE PRINT