

Distributed by:

JAMECO[®]
ELECTRONICS

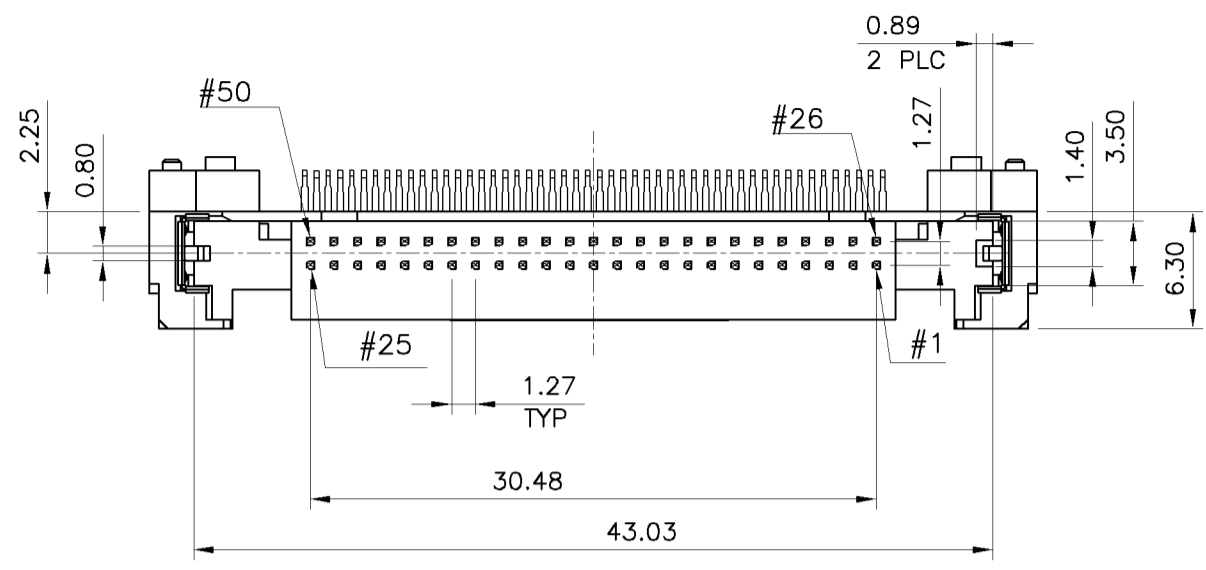
www.Jameco.com ♦ 1-800-831-4242

The content and copyrights of the attached
material are the property of its owner.

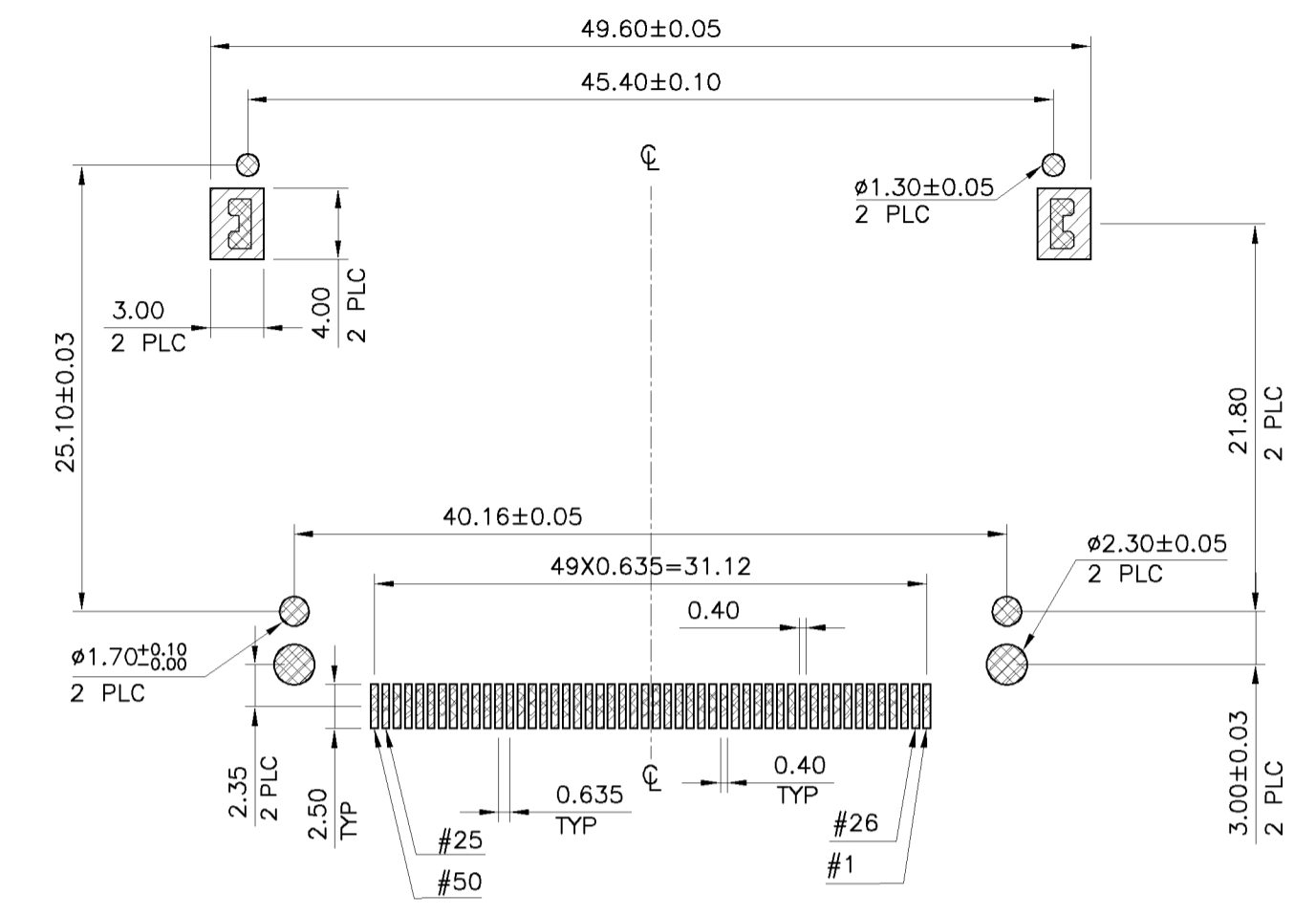
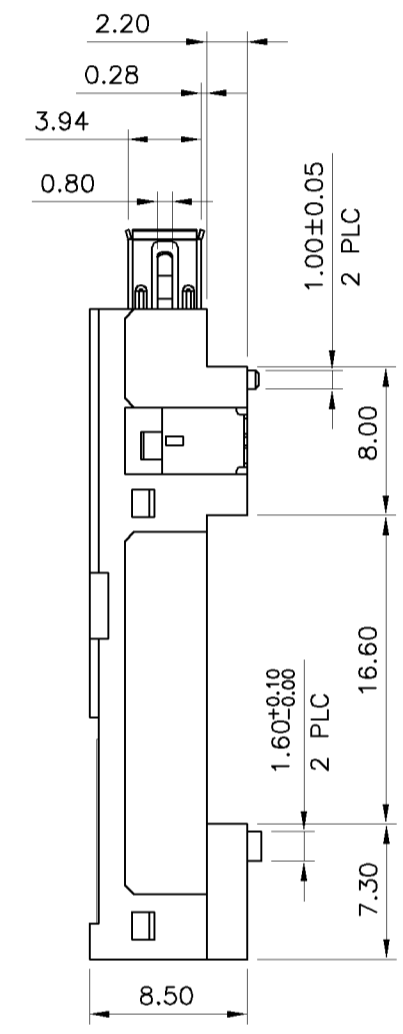
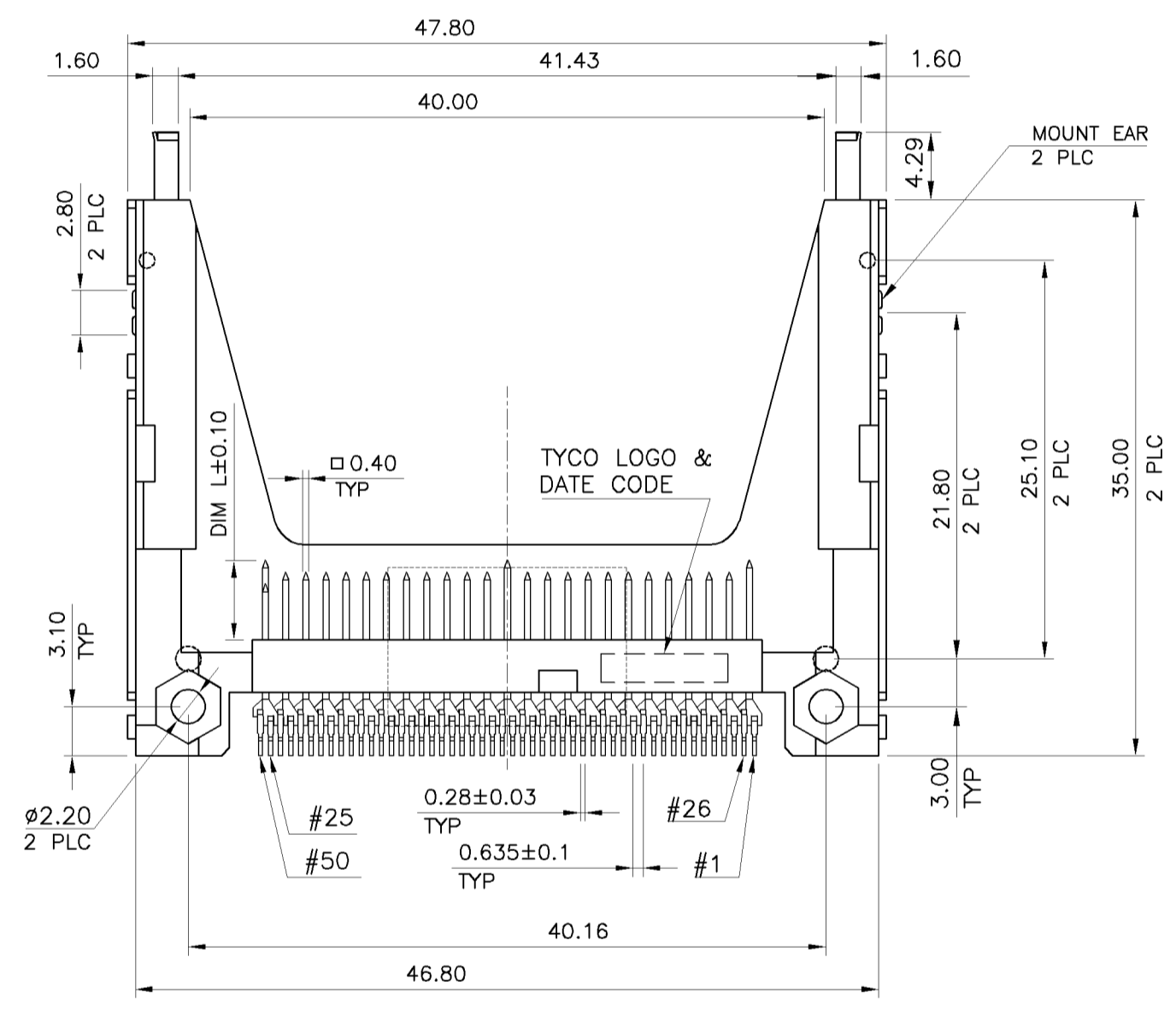
Jameco Part Number 1930189

THIS DRAWING IS UNPUBLISHED. RELEASED FOR PUBLICATION
 © COPYRIGHT BY TYCO ELECTRONICS CORPORATION. ALL RIGHTS RESERVED.

LOC	DIST	REVISIONS			
P	LTR	DESCRIPTION	DATE	DWN	APVD
DW	—	ECR-07-010411, CHANGE TERMINAL'S PROFILE	04MAY07	OH	WK

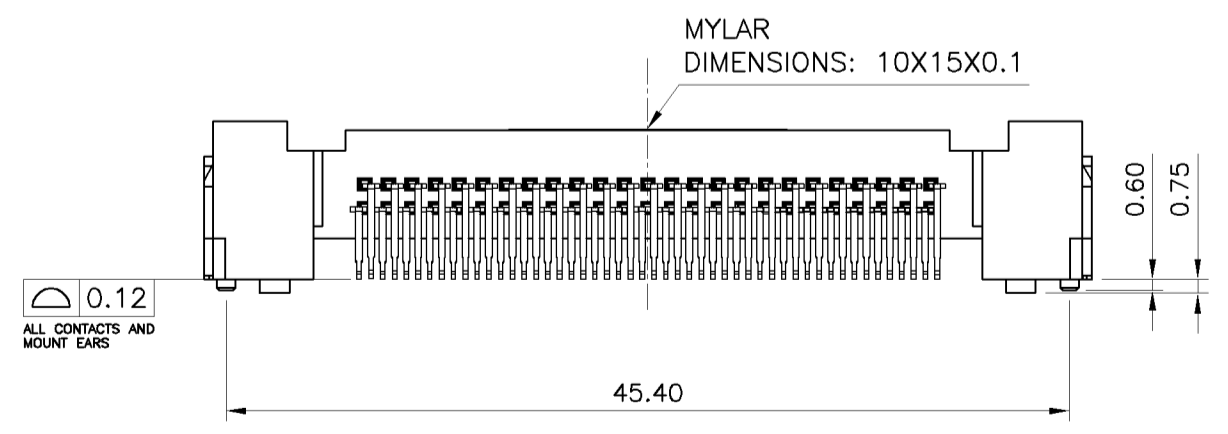
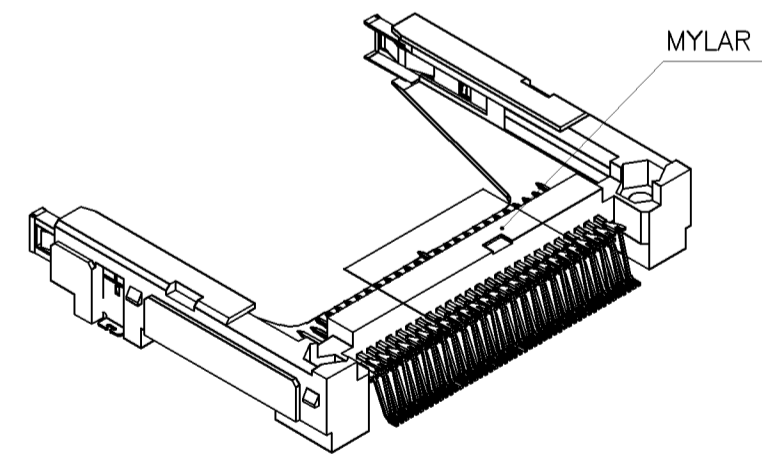


POWER	5.00mm
GENERAL	4.25mm
DETECT	3.50mm
PIN TYPE	INTERFACE DIM. L



☒ AREA OF ACTUAL TERMINAL CONTACT WITH P.C.B.
 ☒ RECOMMENDED P.C.B. LAYOUT

- NOTE:
- MATERIAL:
 HOUSING: LCP WITH 30% GF, UL 94V-0, WHITE COLOR.
 CONTACTS: BRASS.
 MOUNT EAR: BRASS.
 GROUNDING: PHOSPHOR BRONZE.
 - FINISH:
 CONTACTS: 0.381µm [15µ"] GOLD PLATED ON CONTACT AREA,
 2.54µm [100µ"] MIN. MATTE-TIN ON SOLDER TAIL, WITH
 ENTIRE CONTACT UNDERPLATED 1.27µm [50µ"] MIN. NICKEL.
 MOUNT EAR: 2.54µm [100µ"] MIN. TIN PLATED ON SOLDER AREA
 1.27µm [50µ"] MIN. NIKEL UNDERPLATED ALL OVER.
 GROUNDING: 2.03µm [80µ"] MIN. NIKEL UNDERPLATED ALL OVER.
 - REFLOW SOLDER CAPABLE TO 260°C PER TYCO TEST SPEC.
 109-201, CONDITION B.

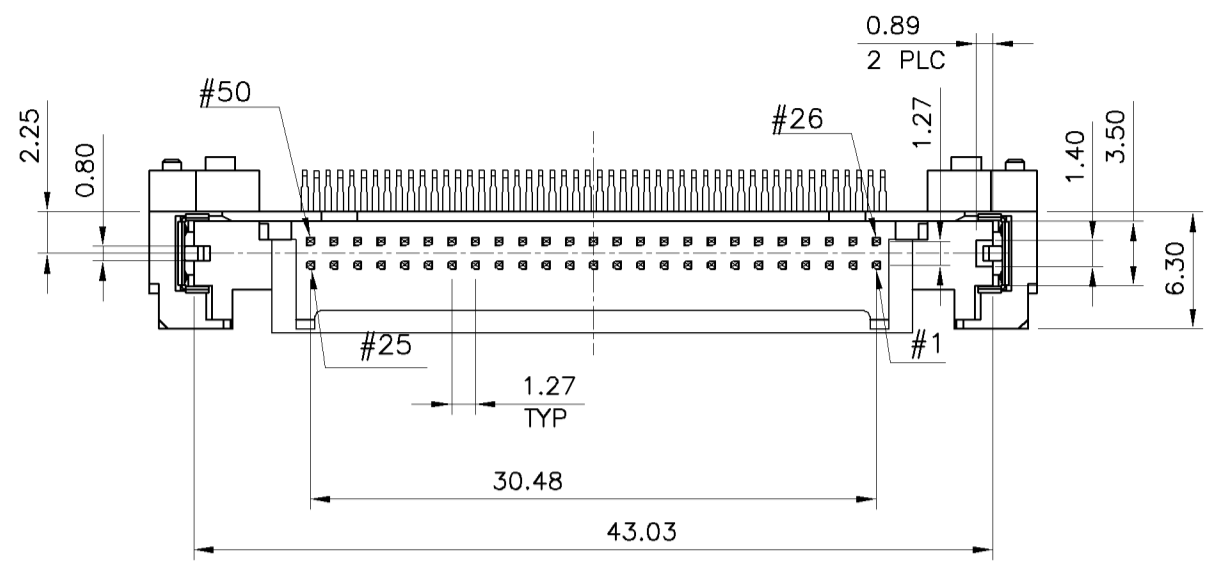


TRAY	W/	1-1734450-1
	W/O	1734450-1
PACKAGE	MYLAR	PART NUMBER

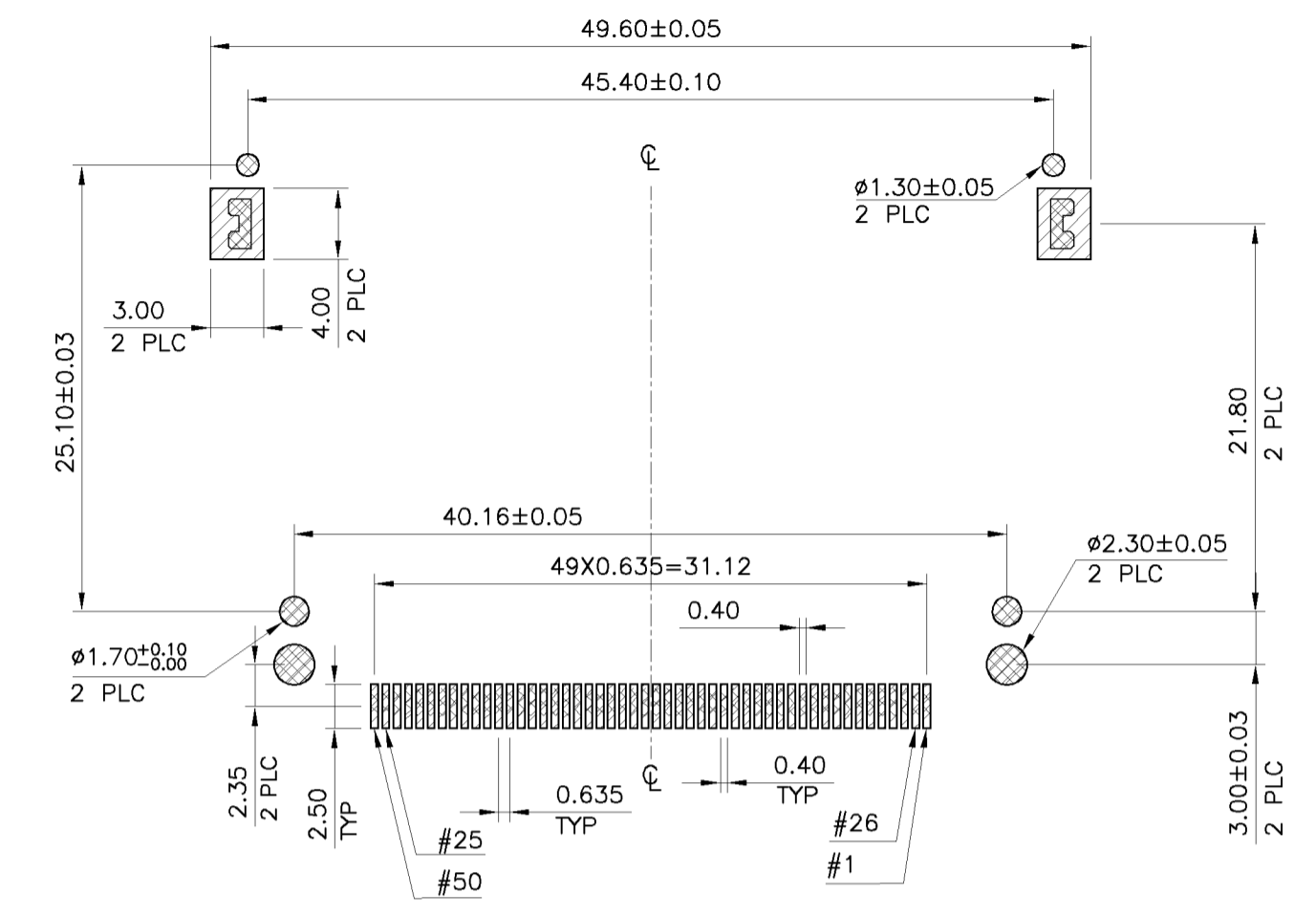
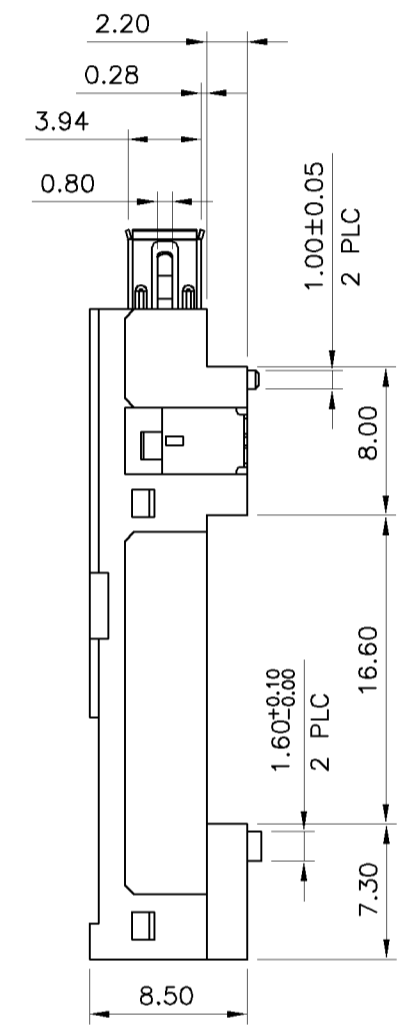
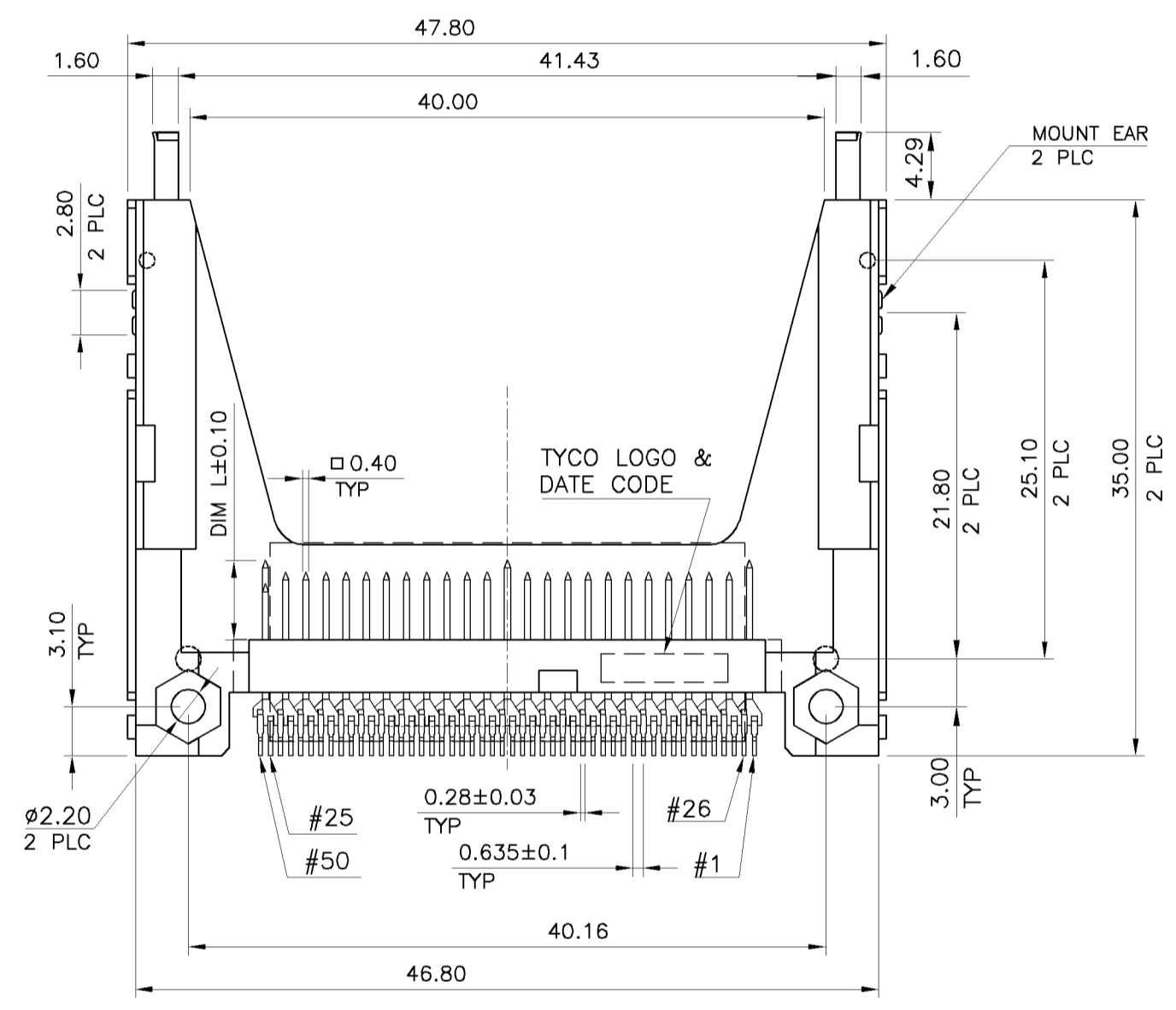
THIS DRAWING IS A CONTROLLED DOCUMENT.		DWN O. HU 03MAY2007	Tyco Electronics Corporation Taipei, Taiwan	
DIMENSIONS: MM		CHK S. HOU 03MAY2007		
TOLERANCES UNLESS OTHERWISE SPECIFIED:		APVD W.J. KE 03MAY2007	NAME	
0 PLC ± 0.5		PRODUCT SPEC	PIN HEADER TYPE 2, 50 POS, SMT, TOP BOARD, COMPACT FLASH CARD, STAND OFF 2.2	
1 PLC ± 0.3		108-57134	QUALIFICATION TEST REPORT	
2 PLC ± 0.2		501-57118	SIZE CAGE CODE DRAWING NO RESTRICTED TO	
3 PLC ± -		WEIGHT 4.64 GRAMS	A3 00779 C=1734450	
4 PLC ± -		CUSTOMER DRAWING	SCALE SHEET 1 OF 4 REV A	
ANGLES ± 2°				
FINISH SEE NOTE				

THIS DRAWING IS UNPUBLISHED. RELEASED FOR PUBLICATION
 © COPYRIGHT BY TYCO ELECTRONICS CORPORATION. ALL RIGHTS RESERVED.

LOC	DIST	REVISIONS					
DW	—	P	LTR	DESCRIPTION	DATE	DWN	APVD
			A	ADD PACKAGE OF TAPE AND REEL, ECR-06-0XXXXX	17NOV06	OH	WK

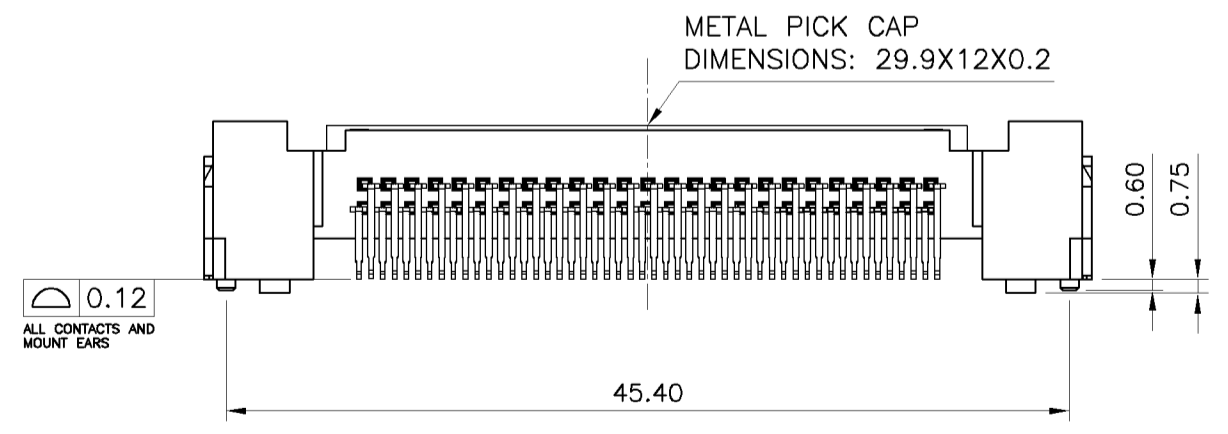
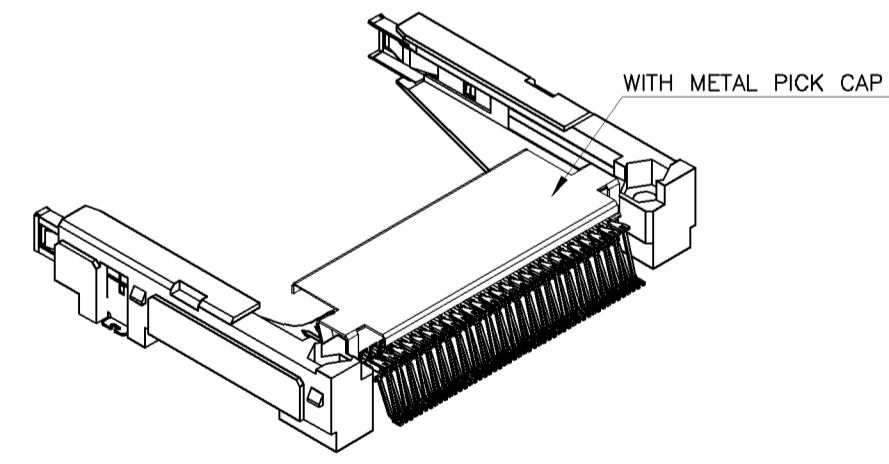


POWER	5.00mm
GENERAL	4.25mm
DETECT	3.50mm
PIN TYPE	INTERFACE DIM. L



☒ AREA OF ACTUAL TERMINAL CONTACT WITH P.C.B.
 ☒ RECOMMENDED P.C.B. LAYOUT

- NOTE:
- MATERIAL:
 HOUSING: LCP WITH 30% GF, UL 94V-0, WHITE COLOR.
 CONTACTS: BRASS.
 MOUNT EAR: BRASS.
 GROUNDING: PHOSPHOR BRONZE.
 PICKCAP: STEEL.
 - FINISH:
 CONTACTS: 0.381µm [15µ"] GOLD PLATED ON CONTACT AREA,
 2.54µm [100µ"] MIN. MATTE-TIN ON SOLDER TAIL, WITH
 ENTIRE CONTACT UNDERPLATED 1.27µm [50µ"] MIN. NICKEL.
 MOUNT EAR: 2.54µm [100µ"] MIN. TIN PLATED ON SOLDER AREA
 1.27µm [50µ"] MIN. NIKEL UNDERPLATED ALL OVER.
 GROUNDING: 2.03µm [80µ"] MIN. NIKEL UNDERPLATED ALL OVER.
 - REFLOW SOLDER CAPABLE TO 260°C PER TYCO TEST SPEC.
 109-201, CONDITION B.

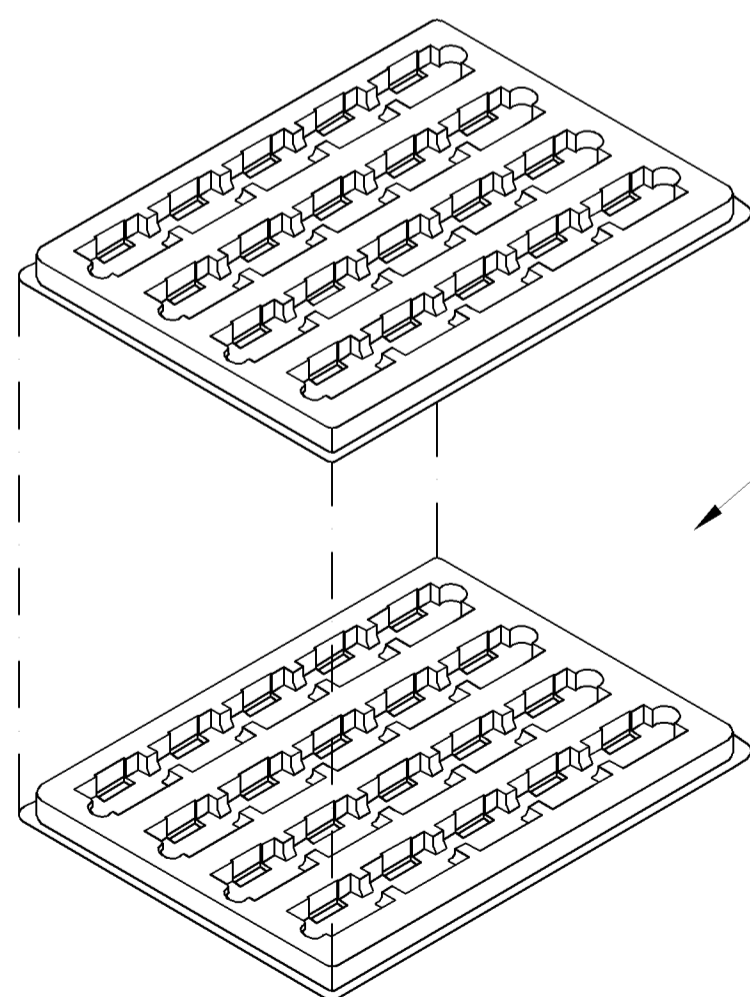
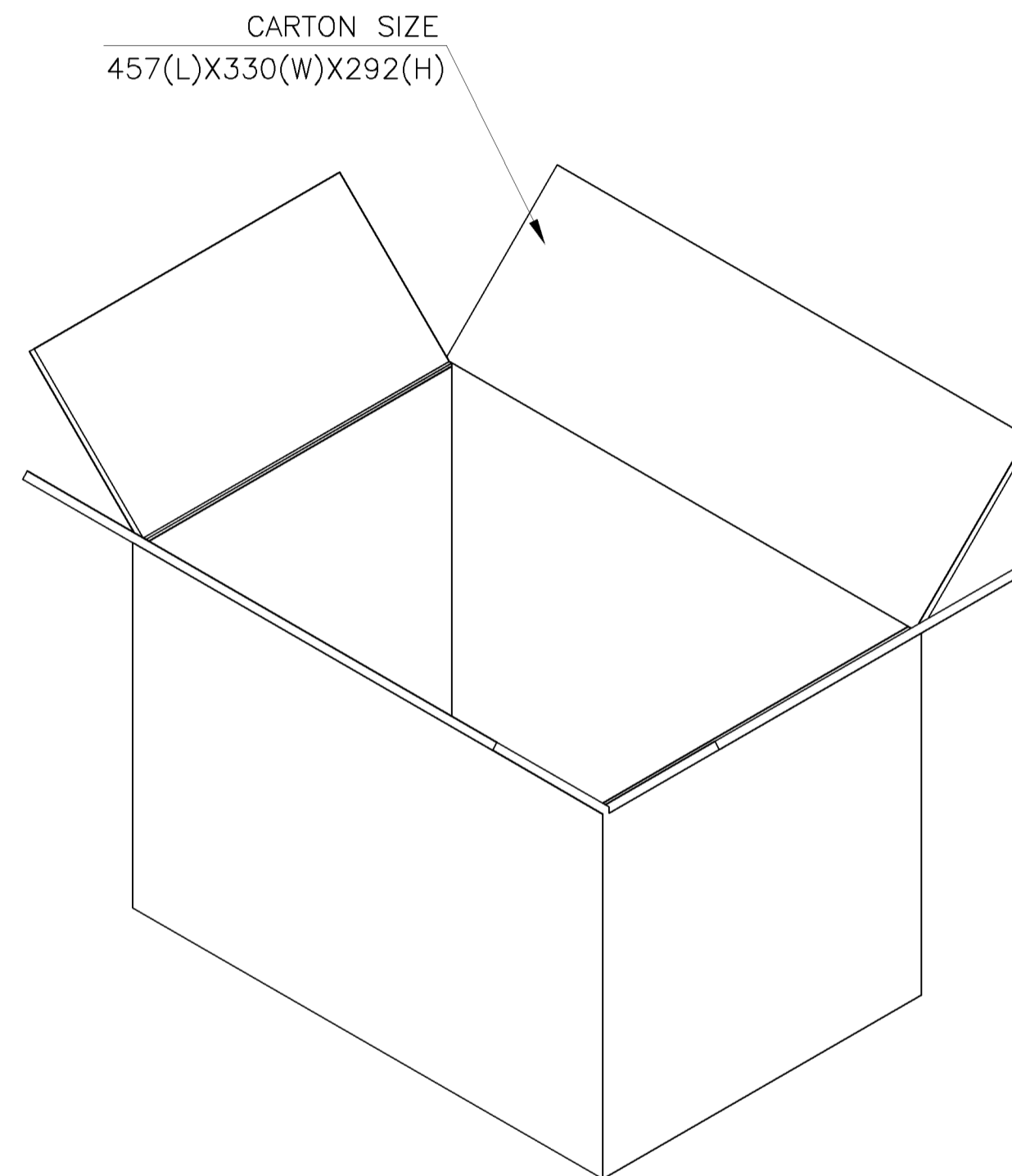
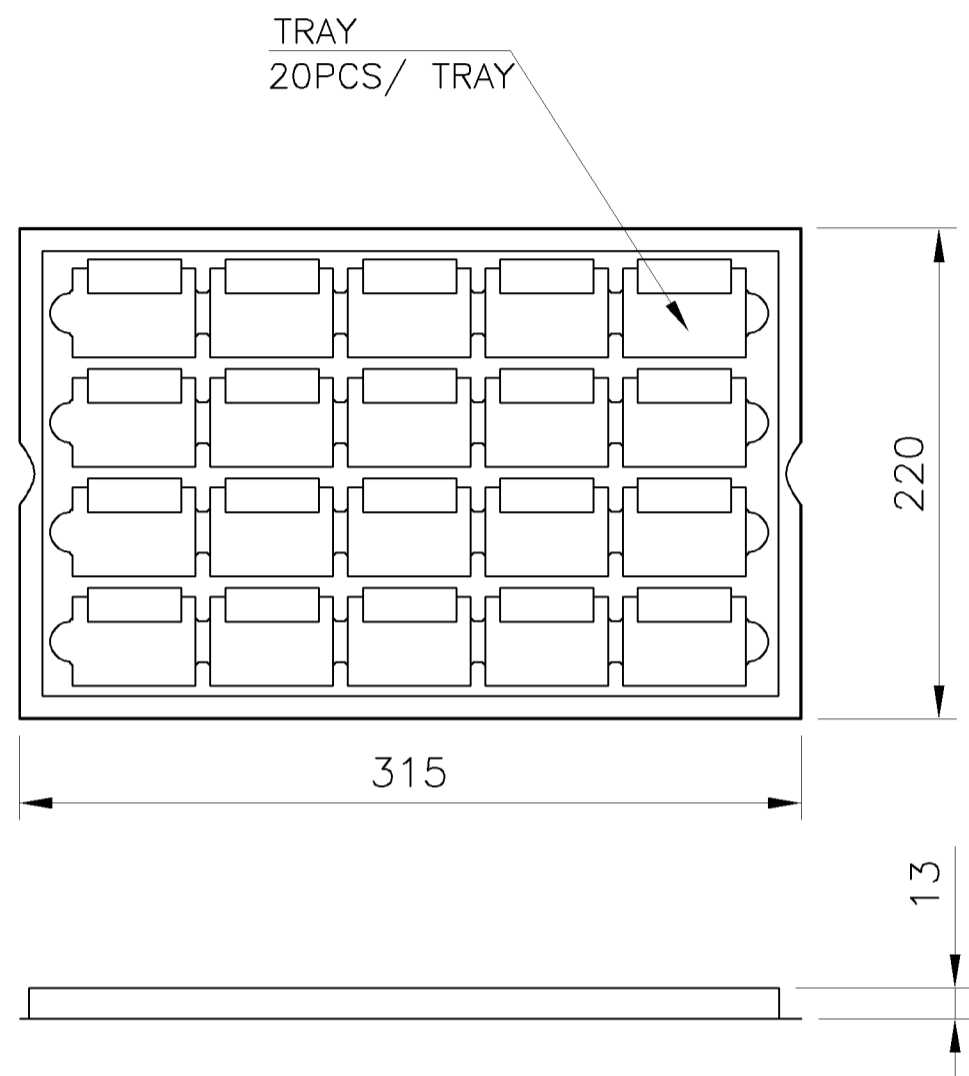


REEL	W/	1-1734450-2
PACKAGE	METAL CAP	PART NUMBER

THIS DRAWING IS A CONTROLLED DOCUMENT.		DWN O. HU 03MAY2007	tyco Tyco Electronics Corporation	
DIMENSIONS: MM		CHK S. HOU 03MAY2007	Electronics Taipei, Taiwan	
TOLERANCES UNLESS OTHERWISE SPECIFIED:		APVD W.J. KE 03MAY2007	NAME	
0 PLC ± 0.5		PRODUCT SPEC	PIN HEADER TYPE 2, 50 POS, SMT, TOP BOARD, COMPACT FLASH CARD, STAND OFF 2.2	
1 PLC ± 0.3		108-57134	RESTRICTED TO	
2 PLC ± 0.2		QUALIFICATION TEST REPORT	SIZE	CAGE CODE
3 PLC ± -		501-57118	DRAWING NO	
4 PLC ± -		WEIGHT 4.64 GRAMS	A300779 C=1734450	
ANGLES ± 2°		CUSTOMER DRAWING	SCALE	SHEET
MATERIAL SEE NOTE		FINISH SEE NOTE		2 OF 4
				REV A

THIS DRAWING IS UNPUBLISHED. RELEASED FOR PUBLICATION
 © COPYRIGHT BY TYCO ELECTRONICS CORPORATION. ALL RIGHTS RESERVED.

LOC	DIST	REVISIONS					
DW	—	P	LTR	DESCRIPTION	DATE	DWN	APVD
				SEE SHEET 1.			



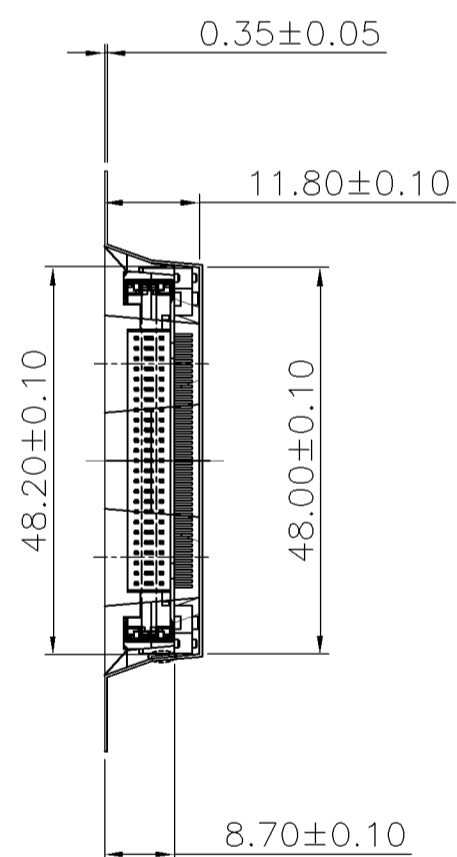
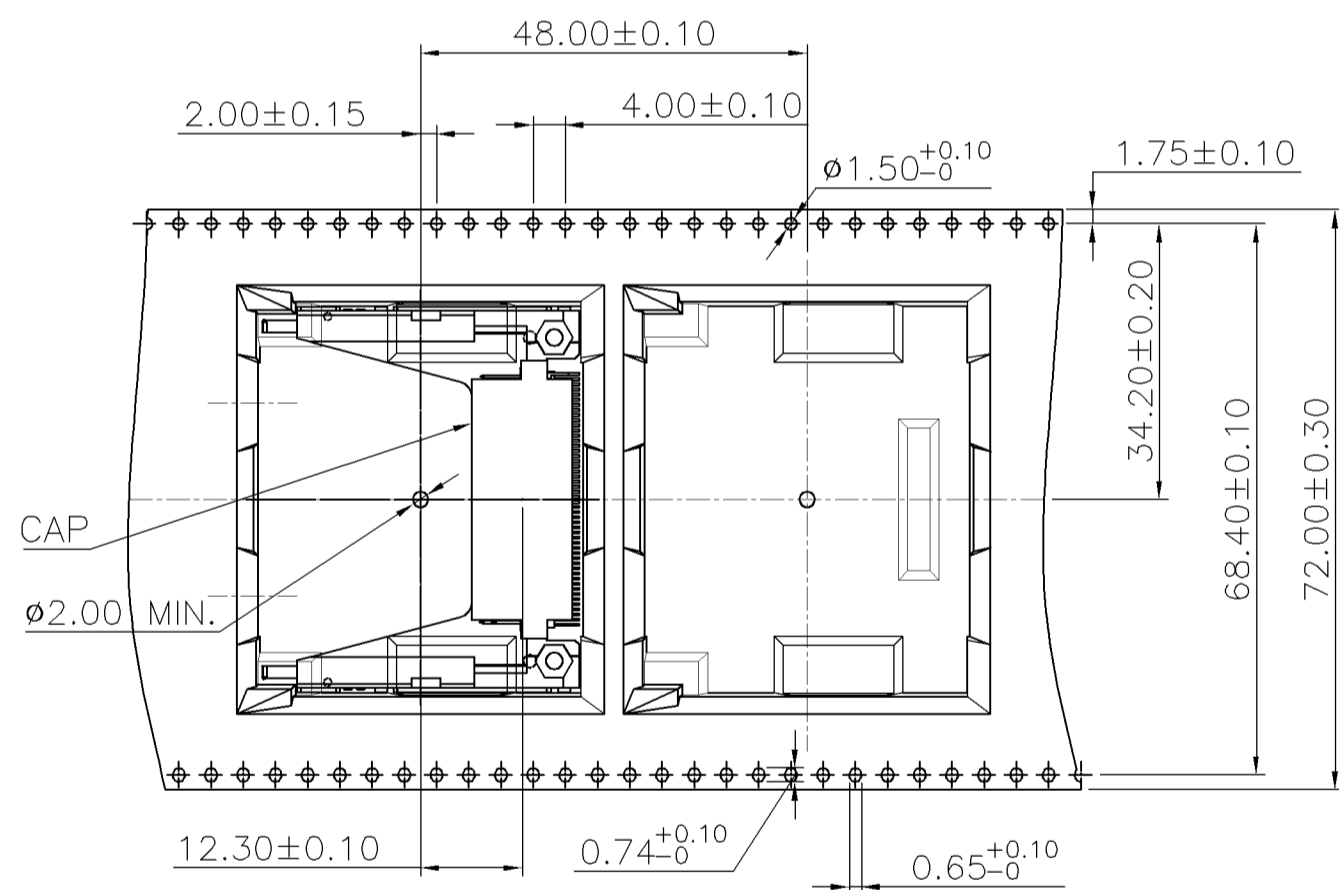
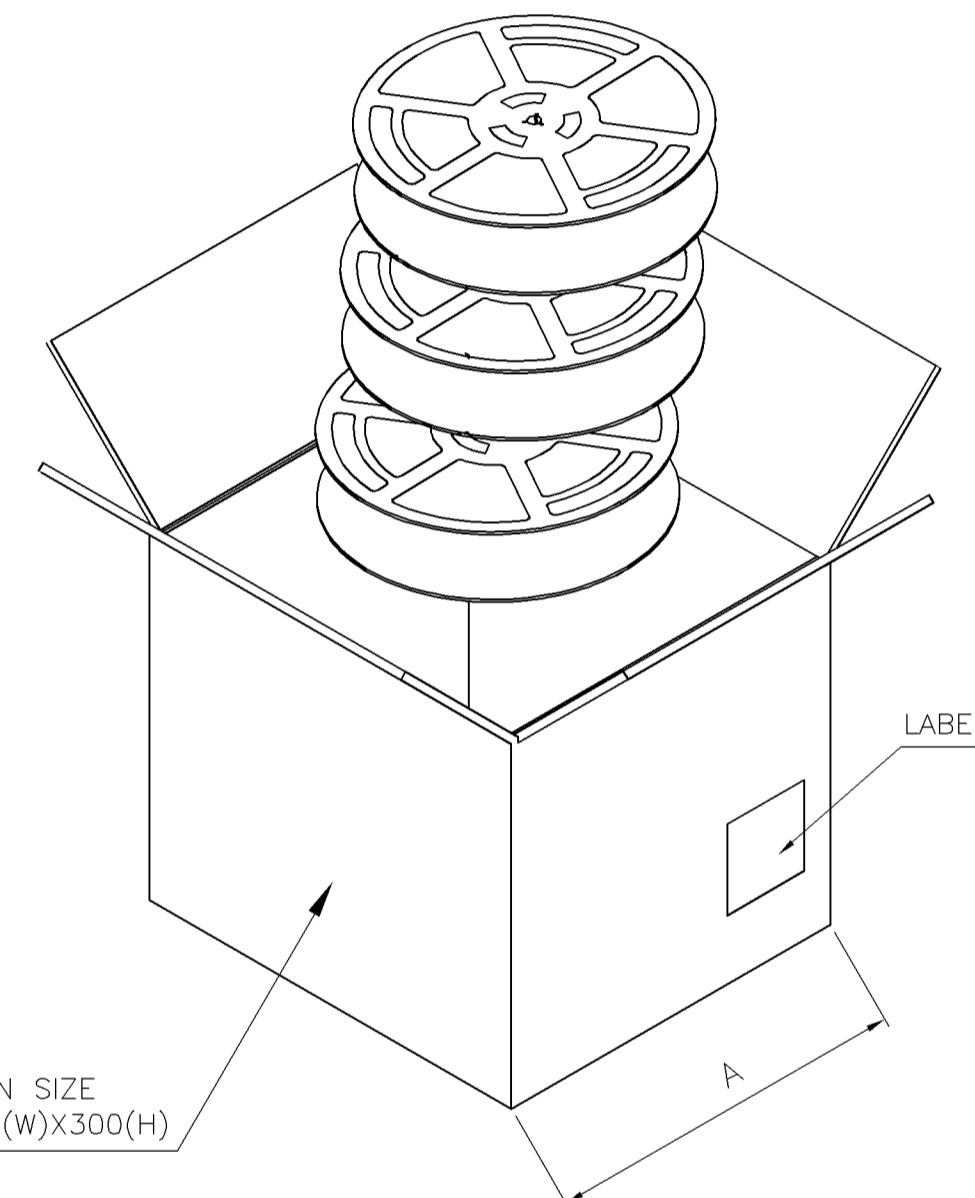
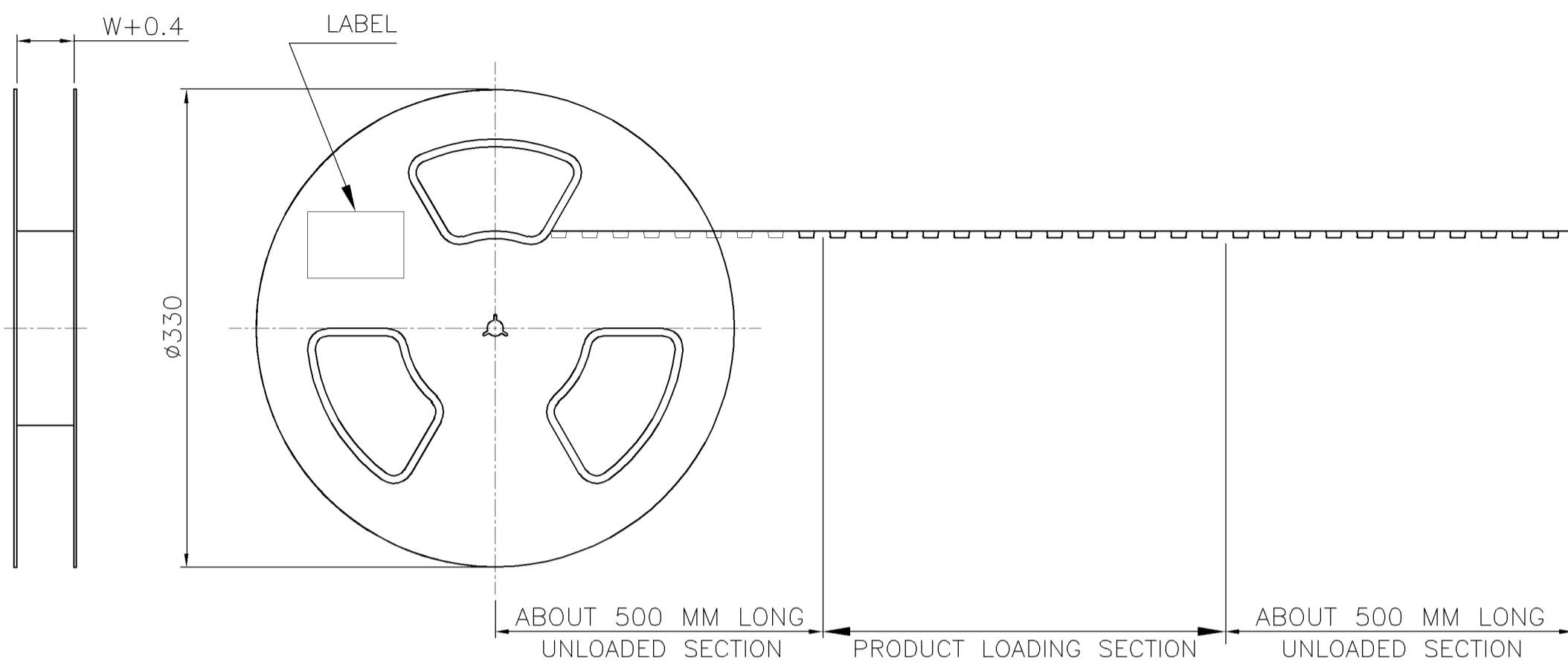
NOTE:
1. TOP LAYER IS EMPTY.

7.3 Kg	6.5 Kg	800
G.W	N.W	QUANTITY

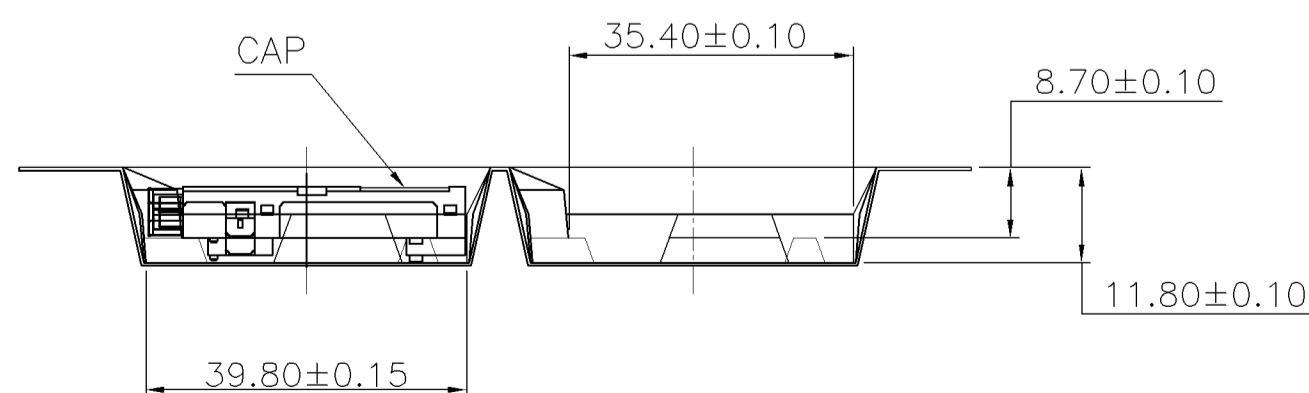
THIS DRAWING IS A CONTROLLED DOCUMENT.		DWN O. HU	03MAY2007	tyco Tyco Electronics Corporation	
DIMENSIONS: MM		CHK S. HOU	03MAY2007	Electronics Taipei, Taiwan	
TOLERANCES UNLESS OTHERWISE SPECIFIED:		APVD W.J. KE	03MAY2007	NAME	
0 PLC ± -		PRODUCT SPEC		PIN HEADER TYPE 2, 50 POS, SMT, TOP BOARD, COMPACT FLASH CARD, STAND OFF 2.2	
1 PLC ± -		APPLICATION SPEC		SIZE	CAGE CODE
2 PLC ± -		WEIGHT		A3	00779
3 PLC ± -		CUSTOMER DRAWING		DRAWING NO	RESTRICTED TO
4 PLC ± -		SCALE		C=1734450	—
ANGLES ± -		SHEET		3 OF 4	REV
FINISH		REV		A	

THIS DRAWING IS UNPUBLISHED. RELEASED FOR PUBLICATION
 © COPYRIGHT BY TYCO ELECTRONICS CORPORATION. ALL RIGHTS RESERVED.

LOC	DIST	REVISIONS			
DW	—	P	LTR	DESCRIPTION	DATE
				SEE SHEET 1.	



24	1500	7	10500	5	6
DIM W	PCS/TAPE	REELS/CARTON	QUANTITY (PCS)	G/W (Kg)	N/W (Kg)



THIS DRAWING IS A CONTROLLED DOCUMENT.		DWN O. HU 03MAY2007	tyco Tyco Electronics Corporation		
DIMENSIONS: MM		CHK S. HOU 03MAY2007	Electronics Taipei, Taiwan		
TOLERANCES UNLESS OTHERWISE SPECIFIED:		APVD W.J. KE 03MAY2007	NAME		
0 PLC ± -		PRODUCT SPEC	PIN HEADER TYPE 2, 50 POS, SMT, TOP BOARD, COMPACT FLASH CARD, STAND OFF 2.2		
1 PLC ± -		APPLICATION SPEC	SIZE	CAGE CODE	DRAWING NO
2 PLC ± -		WEIGHT	A3 00779		RESTRICTED TO
3 PLC ± -		CUSTOMER DRAWING	C=1734450		—
4 PLC ± -		SCALE	—		SHEET 4 OF 4
ANGLES ± -		REV	A		
FINISH					