



**Have a Question?**  
 Chat with a Product  
 Information Specialist

What can we help you find?

[Products](#) | 
 [Industries](#) | 
 [Resources](#) | 
 [About TE](#) | 
 [My Account](#) | 
 [Innovation](#) | 
 [Support Center](#)

## 1-745491-7 Product Details

[Share](#) | 
 [Print](#) | 
 [Email](#)



**1-745491-7**

TE Internal Number: 1-745491-7

Active

View 3D PDF

### Standard Cable Connectors

Always EU RoHS/ELV Compliant (Statement of Compliance)

#### Product Highlights:

- Connector
- Product Series = HDE-20 (IDC)
- 9 Positions
- Without Enclosure
- Connector Style = Receptacle

[View all Features](#)

### Quick Links

- ▶ [Pricing & Availability](#)
- ▶ [Search for Tooling](#)
- ▶ [View Mating Products \(73\)](#)
- ▶ [Product Feature Selector](#)
- ▶ [Contact Us About This Product](#)

[Add to My Part List](#) | 
 [Request Sample](#) | 
 [Find Similar Products](#) | 
 [Buy Product](#)

### Documentation & Additional Information

#### Product Drawings:

- [RECEPTACLE ASSEMBLY, METAL SHELL, SIZE 1, 9 POSITION...](#) (PDF, English)

#### Catalog Pages/Data Sheets:

- [AMPLIMITE Subminiature D Connectors - Cable Connectors](#) (PDF, English)

#### Product Specifications:

- [AMPLIMITE HDE-20 Insulation Displacement Connector](#) (PDF, English)

#### Application Specifications:

- [AMPLIMITE HDE-20 IDC Connectors](#) (PDF, English)

#### Instruction Sheets:

- [AMPLIMITE High Den. \(HDE-20\) Insulation Displacement...](#) (PDF, English)

#### CAD Files: (CAD Format & Compression Information)

- [2D Drawing](#) (DXF, Version M1)
- [3D Model](#) (IGES, Version M1)
- [3D Model](#) (STEP, Version M1)

[List all Documents](#)

#### Additional Information:

- [Product Line Information](#)

#### Related Products:

- [Tooling](#)
- [Mating Products \(73\)](#)

### Product Features (Please use the Product Drawing for all design activity)

#### Product Type Features:

- **Product Type** = Connector
- **Product Series** = HDE-20 (IDC)
- **Wire/Cable Type** = Discrete Wire, Round Jacketed Cable
- **Termination Method to Wire/Cable** = Insulation Displacement Crimp (IDC)
- **Wire Insulation Diameter (mm [in])** = 1.52 [0.060]
- **Mating Connector Lock** = With
- **Mating Connector Lock Type** = Mounting Holes
- **Shell Size** = 1
- **Shell Type** = Full Metal Shell
- **Grounding Indents** = Without
- **Grade** = Standard
- **Color** = Black
- **Shell Material** = Steel

#### Termination Features:

- **Solder Tail Contact Plating** = Tin over Nickel

#### Body Features:

- **Wire Range (mm<sup>2</sup> [AWG])** = 0.15 - 0.40 [26-22]
- **Shell Plating** = Tin
- **Insert Material** = Thermoplastic

#### Contact Features:

- **Contact Type** = Socket
- **Contact Base Material** = Phosphor Bronze
- **Contact Plating, Mating Area, Material** = Gold (30)
- **Contact Size** = 20

#### Housing Features:

- **Enclosure** = Without
- **Connector Style** = Receptacle

#### Configuration Features:

- **Number of Positions** = 9
- **Preloaded** = Yes

#### Industry Standards:

- **RoHS/ELV Compliance** = RoHS compliant, ELV compliant
- **Lead Free Solder Processes** = Not relevant for lead free process
- **RoHS/ELV Compliance History** = Always was RoHS compliant
- **Insert Flammability Rating** = UL 94V-0

#### Packaging Features:

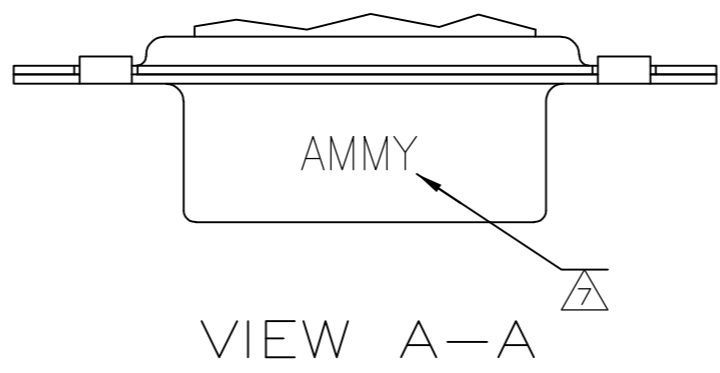
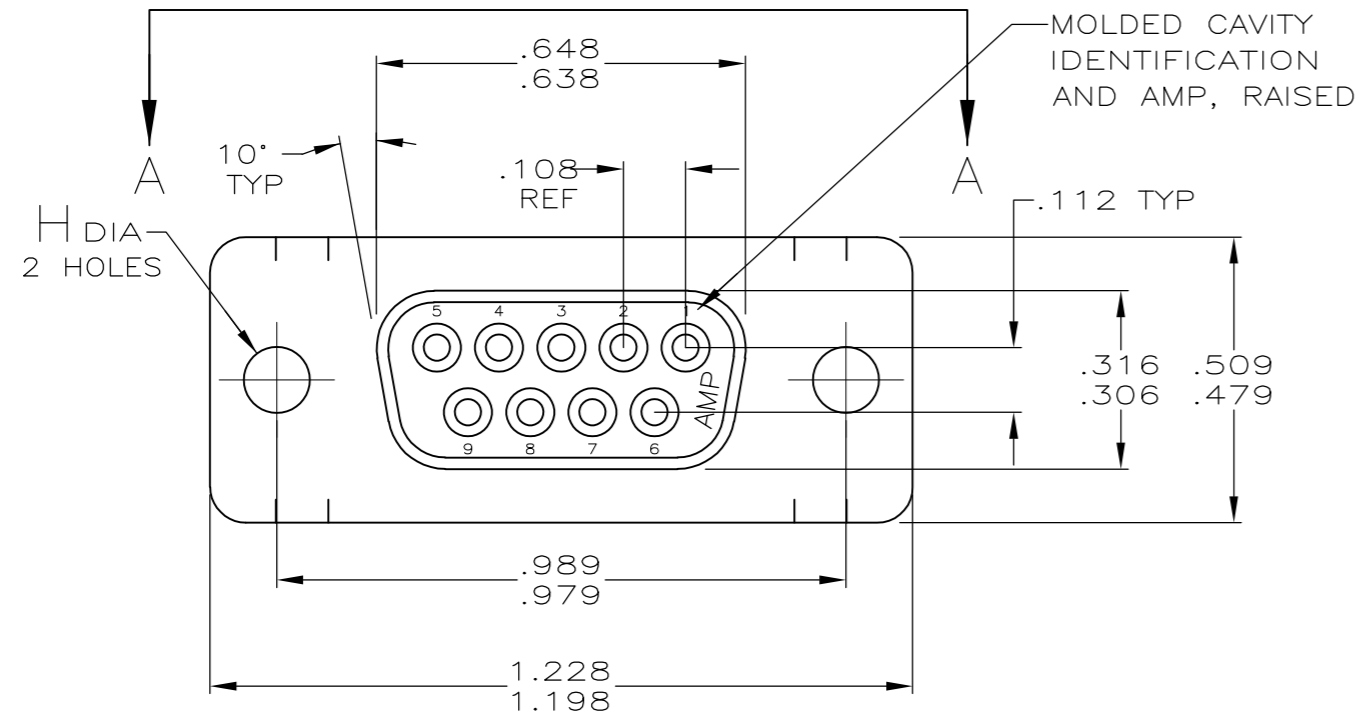
- **Packaging Quantity** = 140

#### Other:

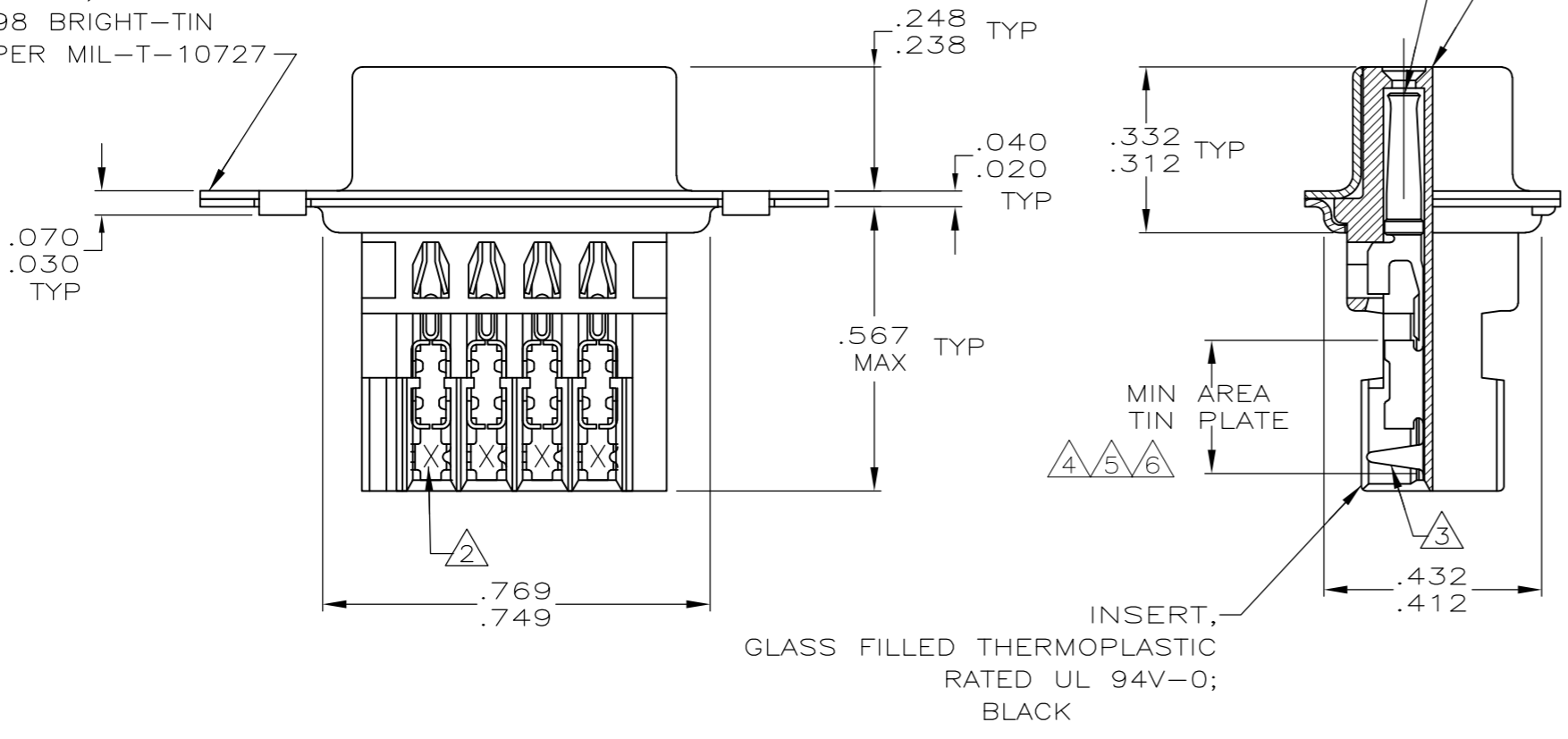
- **Brand** = AMP
- **Comment** = All connectors are preloaded. Individual conductor strands should be larger than 0.13 [.005] diameter. Contacts accept a max. wire insulation thickness of 0.38 [.015]. HDE connectors are designed for terminating solid or stranded (7-strand max.) wire.; HDE connectors are designed for terminating solid or stranded (7-strand max.) wire.; Individual conductor strands should be larger than 0.127 in. [.005] diameter.; Connectors can be made available with clinch nuts, contact AMP Incorporated

THIS DRAWING IS UNPUBLISHED. RELEASED FOR PUBLICATION  
 © COPYRIGHT - By - ALL RIGHTS RESERVED.

LOC	DIST	REVISIONS			
P	LTR	DESCRIPTION	DATE	DWN	APVD
GP	00	M3	REVISED PER ECO-11-004835	11MAR11	RK HMR



SHELL, STEEL, PER QQ-S-698 BRIGHT-TIN PLATED PER MIL-T-10727



- 1 HOUSING FULLY LOADED WITH CONTACTS.
- 2 NUMBER ON CONTACT INDICATES WIRE RANGE.
- 3 CONTACT INSULATION RANGE: .060 MAXIMUM O.D.
- 4 .000030 GOLD ON MATING END FOR .100 MIN LENGTH. .000100-.000200 BRIGHT TIN OR BRIGHT TIN-LEAD IN AREA SHOWN. .000050 NICKEL UNDERPLATE ON ENTIRE CONTACT.
- 5 .000001 MIN GOLD ON MATING END FOR .100 MIN LENGTH. .000100-.000200 BRIGHT TIN OR BRIGHT TIN-LEAD IN AREA SHOWN. .000030 NICKEL UNDERPLATE ON ENTIRE CONTACT.
- 6 .000050 MIN GOLD FOR A LENGTH OF .100 MIN FROM MATING END. .000100 MIN TIN OR TIN-LEAD IN TIN PLATE AREA. BOTH OVER .000050 MIN NICKEL.
- 7 SPECIAL DATE CODE IN THIS APPROXIMATE AREA. A; MM = MONTH; Y = LAST DIGIT OF YEAR.
- 8 SUPERSEDED BY 745491-5
- 9 SUPERSEDED BY 745491-3
- 10 SUPERSEDED BY 745491-1
- 11 .000030 GOLD ON MATING END FOR .100 MIN LENGTH. .000100-.000200 MATTE TIN IN AREA SHOWN. .000050 NICKEL UNDERPLATE ON ENTIRE CONTACT.
- 12 .000001 MIN GOLD ON MATING END FOR .100 MIN LENGTH. .000100-.000200 MATTE TIN IN AREA SHOWN. .000030 NICKEL UNDERPLATE ON ENTIRE CONTACT.

STANDARD	PLC	FINISH	CONTACT FINISH	AWG WIRE RANGE	PART NUMBER
STANDARD	.125 .115	11	3	#20-22	1-745491-9
STANDARD	.125 .115	12	2	#22-26	1-745491-8
STANDARD	.125 .115	11	2	#22-26	1-745491-7
STANDARD	.125 .115	11	1	#26-30	1-745491-6
SMALL PACK	.125 .115	5	2	#22-26	1-745491-5
7 OBSOLETE	STANDARD .120	6	2	#22-26	1-745491-3
OBSOLETE			3	#20-22	1-745491-2
OBSOLETE	STANDARD .156 .146	5	2	#22-26	1-745491-1
OBSOLETE			1	#26-30	1-745491-0
OBSOLETE			3	#20-22	745491-9
OBSOLETE	STANDARD .156 .146	4	2	#22-26	745491-8
OBSOLETE			1	#26-30	745491-7
OBSOLETE			3	#20-22	745491-6
OBSOLETE	STANDARD .125 .115	5	2	#22-26	745491-5
OBSOLETE			1	#26-30	745491-4
OBSOLETE			3	#20-22	745491-3
OBSOLETE	STANDARD .125 .115	4	2	#22-26	745491-2
OBSOLETE			1	#26-30	745491-1
PACKAGING	H	CONTACT FINISH	2	AWG WIRE RANGE	PART NUMBER

THIS DRAWING IS A CONTROLLED DOCUMENT.

DIMENSIONS: INCHES	TOLERANCES UNLESS OTHERWISE SPECIFIED:	DWN L. VARELA - DOCK5 CHK J. GERACE APVD M. WALMSLEY	11-16-04 4-12-90 11-16-04	NAME	TE Connectivity
MATERIAL SEE CALL OUT	FINISH SEE TABLE	PRODUCT SPEC 108-40011 APPLICATION SPEC 114-40002	SIZE A2	CAGE CODE 00779	DRAWING NO C-745491
CUSTOMER DRAWING			SCALE 4:1	SHEET 1 of 1	REV M3