

Distributed by:

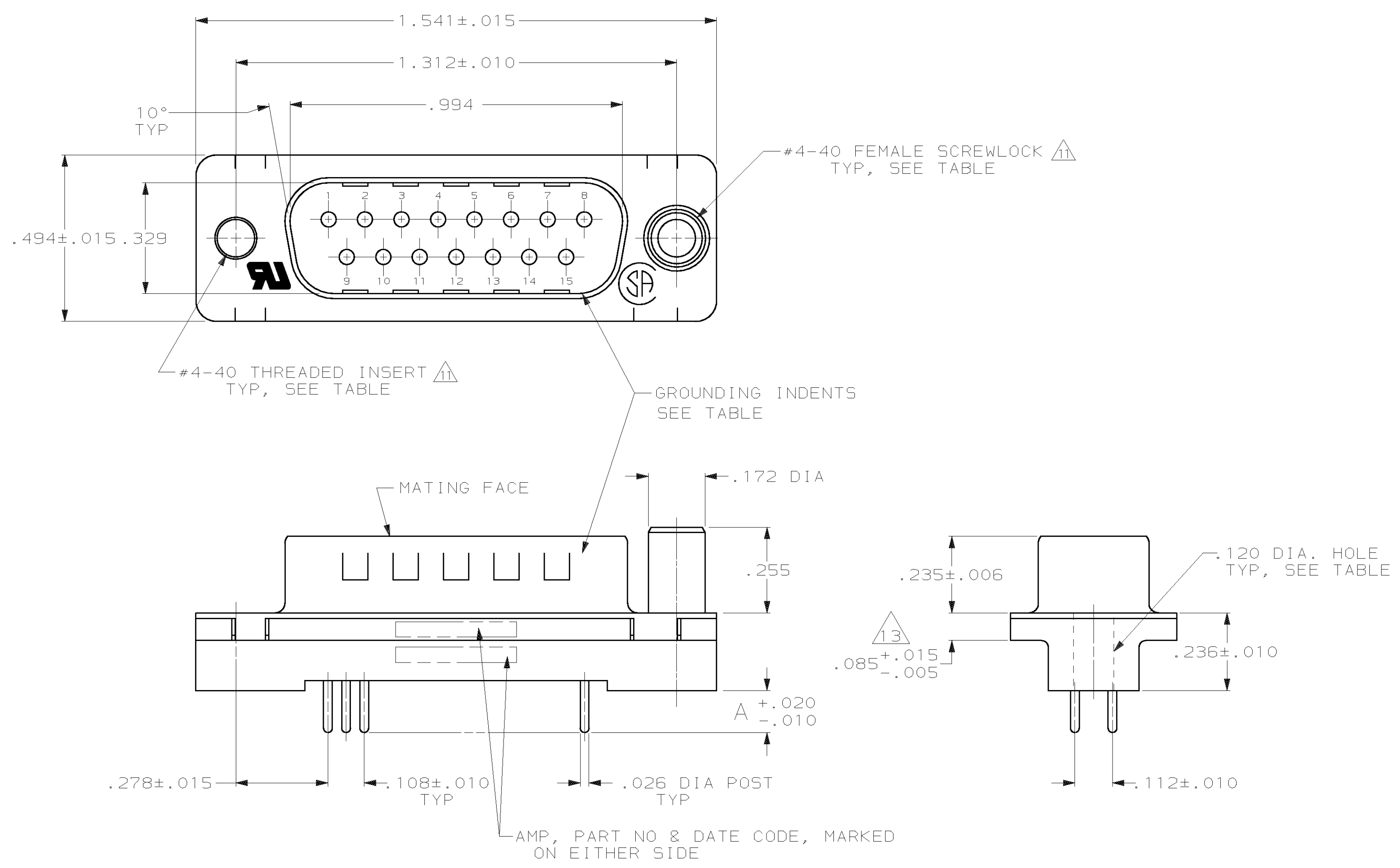
JAMECO[®]
ELECTRONICS

www.Jameco.com ♦ 1-800-831-4242

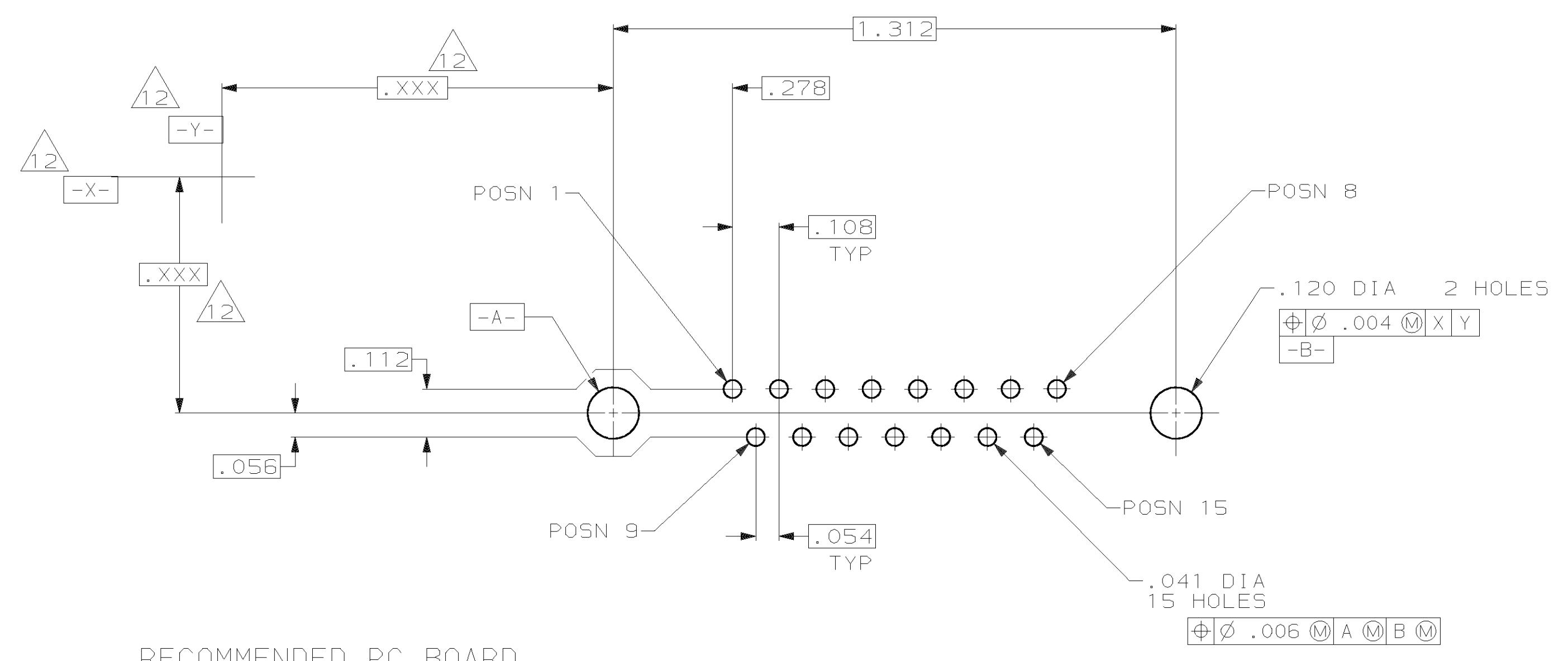
The content and copyrights of the attached
material are the property of its owner.

Jameco Part Number 742750

LOC		DIST		P		F		ZONE		LTR		REVISIONS	
DESCRIPTION	DATE	APPD											
J	REVISED PER EC 0513-0460-02	07MAR03	JG										



- △ CONNECTOR MATES WITH ANY 15 POS. RECEPTACLE IN AMPLIMITE SERIES & COMPLIES WITH AMP SPEC. 108-40025 WHERE APPLICABLE.
- △ FLAME RETARDANT 94V-0 RATED THERMOPLASTIC; COLOR: BLACK.
- △ STEEL PER ASTM A109.
- △ BRASS PER MIL-C-50.
- △ INSERTS: BRASS PER QQ-B-626, SCREWLOCKS: ZINC.
- △ GOLD PLATING PER MIL-G-45204, TIN PLATING PER MIL-T-10727, NICKEL PLATING PER QQ-N-290.
- △ .000200-.000400 BRIGHT TIN.
- △ INSERTS: UNPLATED, SCREWLOCKS: UNPLATED.
- △ GOLD FLASH FOR A LENGTH OF .150 MINIMUM FROM MATING END, .000100 MINIMUM TIN-LEAD ON OPPOSITE END, BOTH OVER .000050 MINIMUM NICKEL.
- △ GOLD PLATED FOR A LENGTH OF .150 FROM MATING END, .000030 MIN GOLD IN MATED AREA, .000100 MIN TIN OR TIN-LEAD FOR A LENGTH OF DIMENSION A FROM OPPOSITE END, ALL OVER .000050 MIN NICKEL.
- △ INSERTS & SCREWLOCKS WILL WITHSTAND 10 IN. LBS. TORQUE AND 50 LBS. PULL OUT FORCE FROM MATING FACE SIDE.
- △ DATUMS AND BASIC DIMENSIONS ESTABLISHED BY CUSTOMER.
- △ .110 MAX IN SHELL TAB CLINCH AREAS.



OBSOLETE	NO	W/THREADED INSERTS	△	.125	1-747872-9
OBSOLETE	YES	W/FEMALE SCREWLOCKS	△	.250	1-747872-8
OBSOLETE	YES	W/FEMALE SCREWLOCKS	△	.250	1-747872-7
	YES	W/FEMALE SCREWLOCKS	△	.170	1-747872-6
SUPERSEDED BY 1-747872-6	YES	W/FEMALE SCREWLOCKS	△	.170	1-747872-5
SUPERSEDED BY 1-747872-6	YES	W/FEMALE SCREWLOCKS	△	.125	1-747872-4
OBSOLETE	YES	W/FEMALE SCREWLOCKS	△	.125	1-747872-3
OBSOLETE	YES	W/THREADED INSERTS	△	.250	1-747872-2
OBSOLETE	YES	W/THREADED INSERTS	△	.250	1-747872-1
OBSOLETE	YES	W/THREADED INSERTS	△	.170	1-747872-0
OBSOLETE	YES	W/THREADED INSERTS	△	.170	747872-9
	YES	W/THREADED INSERTS	△	.125	747872-8
OBSOLETE	YES	W/THREADED INSERTS	△	.125	747872-7
OBSOLETE	YES	W/.120 DIA. HOLE	△	.250	747872-6
OBSOLETE	YES	W/.120 DIA. HOLE	△	.250	747872-5
	YES	W/.120 DIA. HOLE	△	.170	747872-4
OBSOLETE	YES	W/.120 DIA. HOLE	△	.170	747872-3
SUPERSEDED BY 747872-4	YES	W/.120 DIA. HOLE	△	.125	747872-2
OBSOLETE	YES	W/.120 DIA. HOLE	△	.125	747872-1

GROUNDING INDENTS		REMARKS	CONTACT FINISH	A	PART NUMBER
PART NO					
DO NOT SCALE PRINT. UNLESS SPECIFIED DIMENSIONS IN INCHES TOLERANCES ON:		DR 12-25-85 S. WELDON	AMP AMP Incorporated Harrisburg, PA 17105-3608		
2 PLC DEC ±		CHK 12-25-85 C. RICHARD			
3 PLC DEC ± .005		APPD 12-2-85 R. BRANDT	NAME		
ANGLES ± 2°		APPD 12-13-85 R. BAER	PLUG ASSEMBLY, SIZE 2, 15 POS., VERTICAL, .026 DIA. POSTS, FRONT SHELL, AMPLIMITE™HDP		
MATERIAL	PRODUCT SPEC	SIZE			
HOUSING: △	△	APPLICATION SPEC	CAGE CODE	DRAWING NO	
SHELLS: △	△	114-40023	D 00779	C-747872	
CONTACTS: △	△	WEIGHT	SCALE	SHEET	
HARDWARE: △	△	-	NTS	1 OF 1	
FINISH: △	△	CUSTOMER DRAWING			
SHELLS: △	△				
CONTACTS: SEE TABLE	△				
HARDWARE: △	△				

THIS DRAWING IS A CONTROLLED DOCUMENT FOR AMP INCORPORATED. IT IS SUBJECT TO CHANGE AND THE CONTROLLING ENGINEERING ORGANIZATION SHOULD BE CONTACTED FOR THE LATEST REVISION.