

Distributed by:

JAMECO[®]
ELECTRONICS

www.Jameco.com ♦ 1-800-831-4242

The content and copyrights of the attached
material are the property of its owner.

Jameco Part Number 1930285

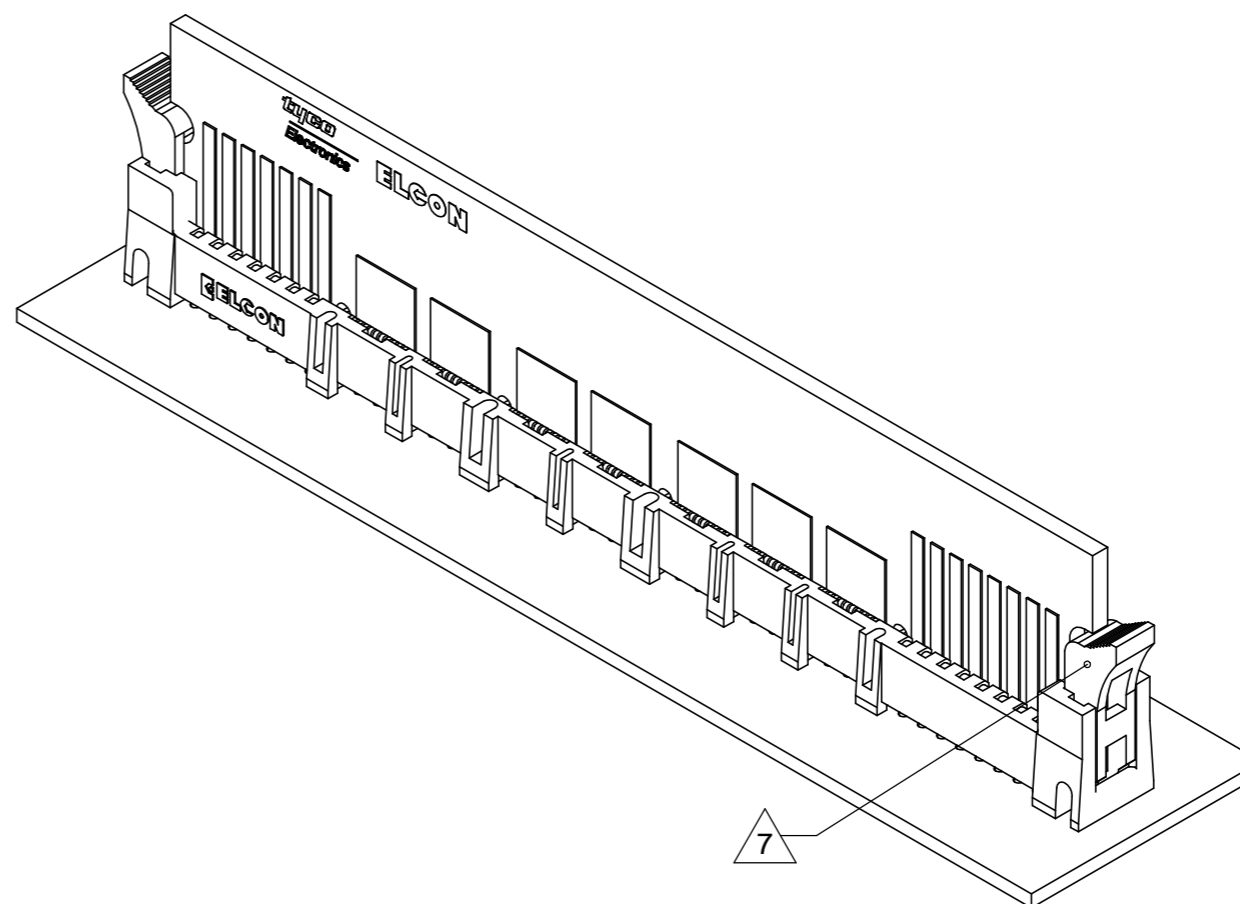
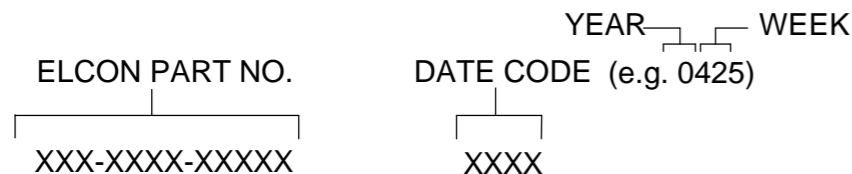
This drawing involves proprietary design rights of Tyco Electronics Corporation, and all design, manufacture, reproduction, use and sale rights regarding the same are expressly reserved. It is submitted for a specific purpose and the recipient by accepting this drawing, assumes custody and control and agrees to take reasonable precautions: (a) that this drawing will not be copied and reproduced, in whole or in part, or its contents revealed in any manner, or to any person except to meet the purpose for which it was delivered and (b) that any special features peculiar to this design will not be incorporated in other projects without the expressed written permission of Tyco Electronics Corporation.

TYCO CONFIDENTIAL

REVISIONS			
EC	REV	DESCRIPTION	DATE
—	A	INITIAL RELEASE, WAS ESK-1750B (SURFACE MOUNT)	03/24/04
—	B	REPLACED FROM SURFACE MOUNT CONFIGURATION TO SOLDER TAIL: STANDARD TAIL & SHORT TAIL ADDED NOTE 10	03/30/04
0S1Q-0288-04	C	CHANGED SOLDER TAIL LENGTH FROM STANDARD(4.5) & SHORT(3.0) TO SPECIAL LENGTH(3.6) REMOVED PART NUMBER TABLE (OLD NOTE 10) CHANGED CUD TO C-1766308, PREVIOUSLY 998-148-2	08/09/04
0S1Q-0314-04	C1	ADDED KEY FEATURE DIMENSIONS 4X 1.50, 23.95, 2X 19.50, 29.20 ON TOP VIEW SHEET 2 & 3	08/30/04
—	C2	CHANGED CARD SLOTS TOLERANCE TO $\pm 0.10\text{mm}$	09/16/04
0S1Q-0339-04	C3	CHANGED CONN KEY TOLERANCE TO $\pm 0.10\text{mm}$	09/17/04

11. REFERENCE TYCO PART NUMBER 1766308-1 (ELCON PN 284-0313-01303)

10. ITEMS PROVIDED TO THIS SPECIFICATION TO BE PERMANENTLY IDENTIFIED PER THE FOLLOWING IDENTIFIER:



- 9 MACHINED PART 284-0313-00900 WILL BE REPLACED BY MOLDED PART 284-0313-01303 WHEN TOOLING BECOMES AVAILABLE.
- 8 RECOMMENDED GOLD FINGER LENGTH FOR RELIABLE CONTACT.
- 7 CAUTION: LATCHES ARE INTENDED FOR RETENTION OF PC BOARD TO CONNECTOR. DO NOT ATTEMPT TO FULLY EJECT PC BOARD FROM CONNECTOR WHILE DISENGAGING LATCHES, DAMAGE TO LATCHES AND OR CONNECTOR MAY OCCUR.
- 6 FEATURE REQUIRED FOR USE WITH EJECTOR.
- 5 KEEP OUT AREA FOR COMPONENTS ONLY.
- 4 CONNECTOR ACCEPT 2.36 ± 0.13 [.093 \pm .005] THICK PCB.

3. FINISHES:
CONTACTS: SELECTIVE GOLD PLATE PER MIL-G-45204, OVER NICKEL PER QQ-N-290

TERMINALS: TIN PLATE PER ASTM B 545 OVER NICKEL PER QQ-N-290

2. MATERIALS:
INSULATORS: THERMOPLASTIC, GLASS REINFORCED UL94V-0 FLAMMABILITY RATED
CONTACTS: COPPER ALLOY

1. PART NUMBER CHANGES AND OR DESIGN CHANGES AFFECTING ITEM INTERCHANGEABILITY REQUIRE PRIOR ELCON APPROVAL AND AUTHORIZATION BY REVISION TO THIS DRAWING.

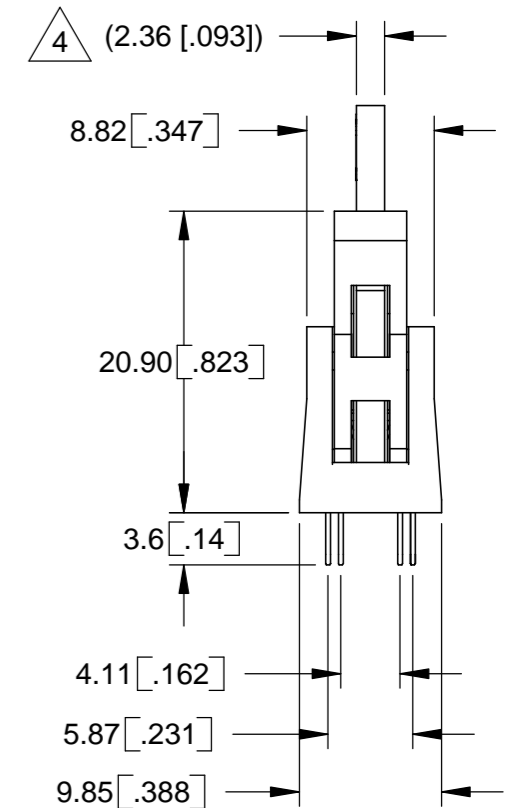
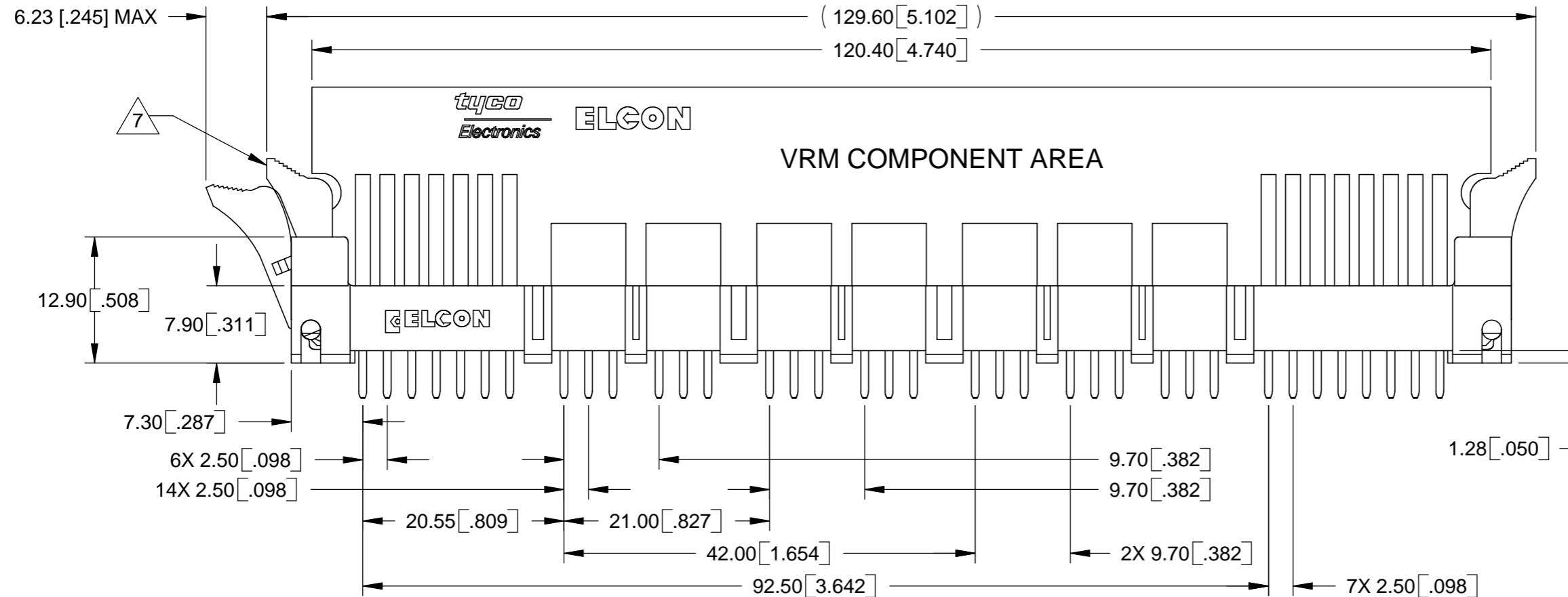
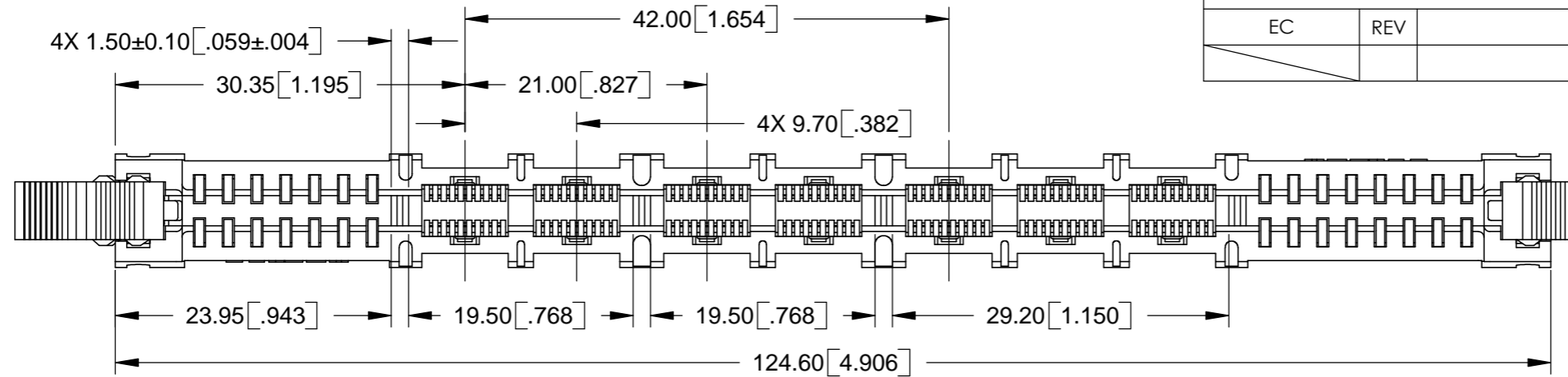
NOTES: UNLESS OTHERWISE SPECIFIED

<p>THIRD ANGLE PROJECTION</p> <p>UNLESS OTHERWISE SPECIFIED DIMENSIONS ARE IN METRIC [INCHES]</p> <p>TOLERANCES</p> <p>ANGLES $\pm 2.0^\circ$</p> <p>DECIMALS</p> <p>.XX ± 0.25 [.010]</p> <p>.X ± 0.5 [.02]</p>	DRAWN HA NGUYEN DATE 03/22/04	Tyco Electronics Corporation Menlo Park, CA 94025
	CHECKED	TITLE
	APPROVED	MC-P7S15 MINI CROWNEDGE W/LATCHES 14 POWERS, 30 SIGNALS, SOLDER TAIL PN: 284-0313-01303 (MOLDED) PN: 284-0313-00900 (MACHINED) 9
	APPROVED D. CHAU 10/26/04	SIZE DWG NUMBER B C = 1766308
DCA APPROVED M. ALIM 10/26/04	REV. C3	
FILE NAME	C1766308C3.SLDDRW	DWG SCALE: 2 = 1 SH 1 OF 5

This drawing involves proprietary design rights of Tyco Electronics Corporation, and all design, manufacture, reproduction, use and sale rights regarding the same are expressly reserved. It is submitted for a specific purpose and the recipient by accepting this drawing, assumes custody and control and agrees to take reasonable precautions: (a) that this drawing will not be copied and reproduced, in whole or in part, or its contents revealed in any manner, or to any person except to meet the purpose for which it was delivered and (b) that any special features peculiar to this design will not be incorporated in other projects without the expressed written permission of Tyco Electronics Corporation.

REVISIONS

EC	REV	DESCRIPTION	DATE
SEE SHEET 1			

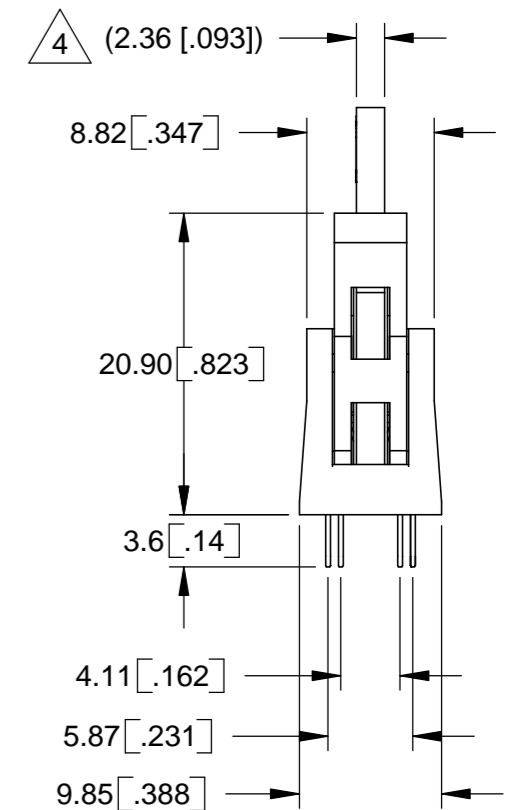
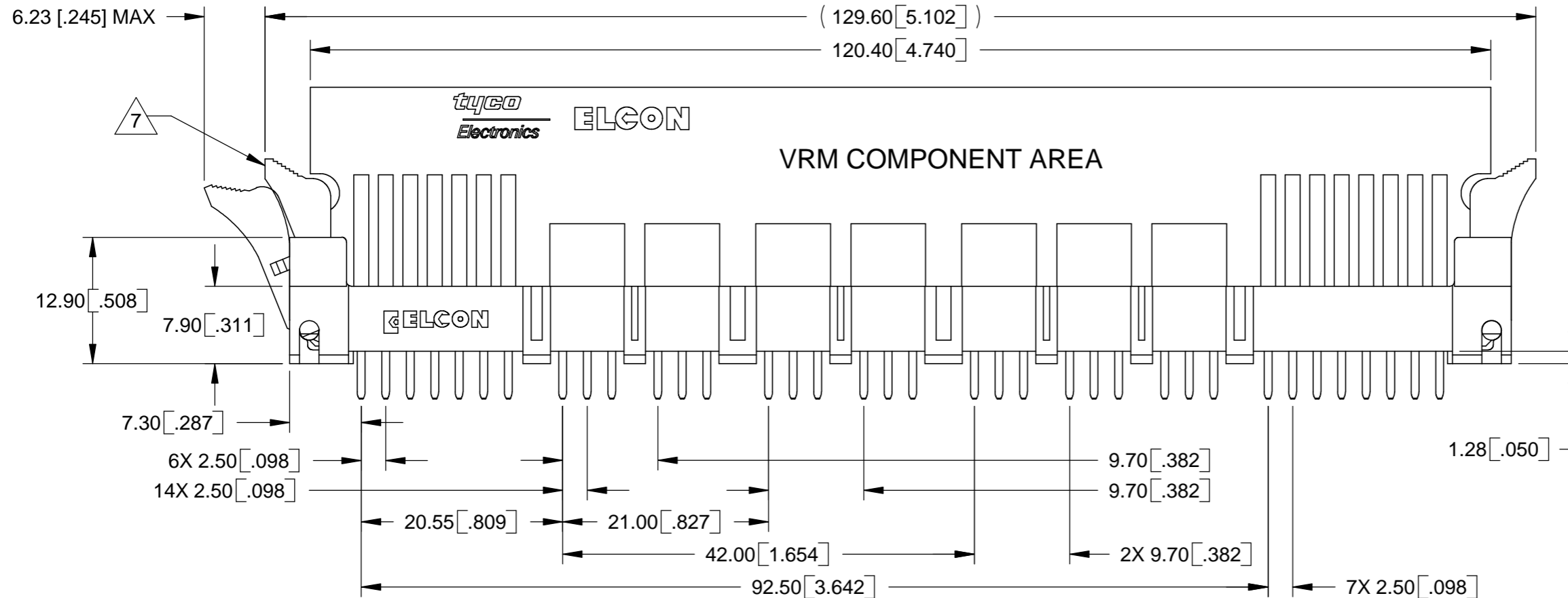
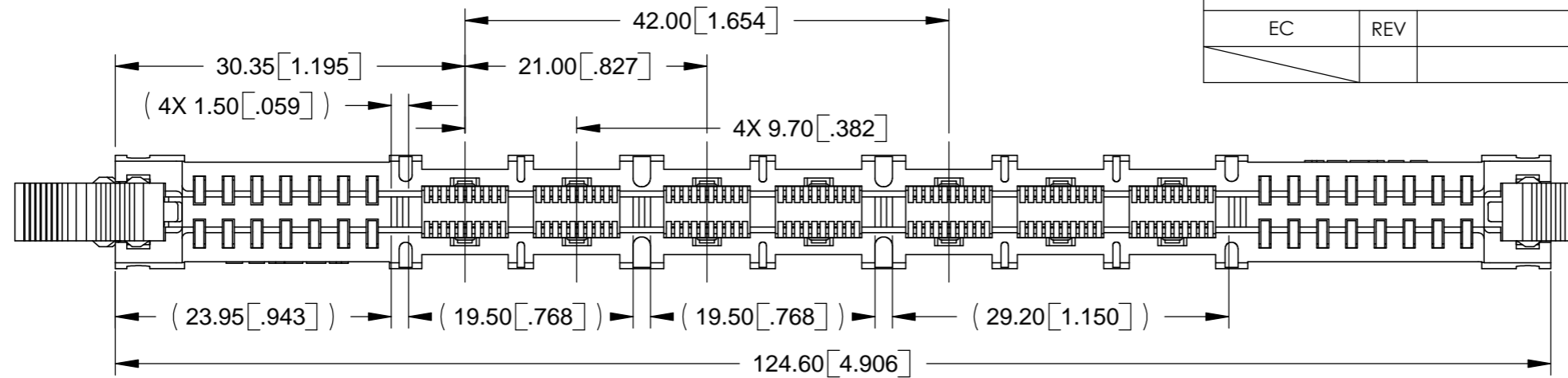


TYCO CONFIDENTIAL

<p>THIRD ANGLE PROJECTION</p> <p>UNLESS OTHERWISE SPECIFIED DIMENSIONS ARE IN METRIC [INCHES]</p> <p>TOLERANCES</p> <p>ANGLES ± 2.0°</p> <p>DECIMALS</p> <p>.XX ± 0.25 [.010]</p> <p>.X ± 0.5 [.02]</p>	<p>DRAWN HA NGUYEN</p> <p>CHECKED</p> <p>APPROVED</p> <p>APPROVED D. CHAU</p> <p>DCA APPROVED M. ALIM</p> <p>FILE NAME C1766308C3.SLDDRW</p>	<p>DATE 03/22/04</p> <p>10/26/04</p> <p>10/26/04</p>	<p>Tyco Electronics Corporation Menlo Park, CA 94025</p> <p>ELCON</p> <p>TITLE SOCKET CONNECTOR MC-P7S15 MINI CROWNEDGE WITH LATCHES 14 POWERS, 30 SIGNALS, SURFACE MOUNT PN: 284-0313-01303 (MOLDED)</p>	<p>SIZE B</p> <p>DWG NUMBER C = 1766308</p>	<p>REV. C3</p>
	<p>DWG SCALE: 2 = 1</p>		<p>SH 2 OF 5</p>		

This drawing involves proprietary design rights of Tyco Electronics Corporation, and all design, manufacture, reproduction, use and sale rights regarding the same are expressly reserved. It is submitted for a specific purpose and the recipient by accepting this drawing, assumes custody and control and agrees to take reasonable precautions: (a) that this drawing will not be copied and reproduced, in whole or in part, or its contents revealed in any manner, or to any person except to meet the purpose for which it was delivered and (b) that any special features peculiar to this design will not be incorporated in other projects without the expressed written permission of Tyco Electronics Corporation.

REVISIONS			
EC	REV	DESCRIPTION	DATE
		SEE SHEET 1	

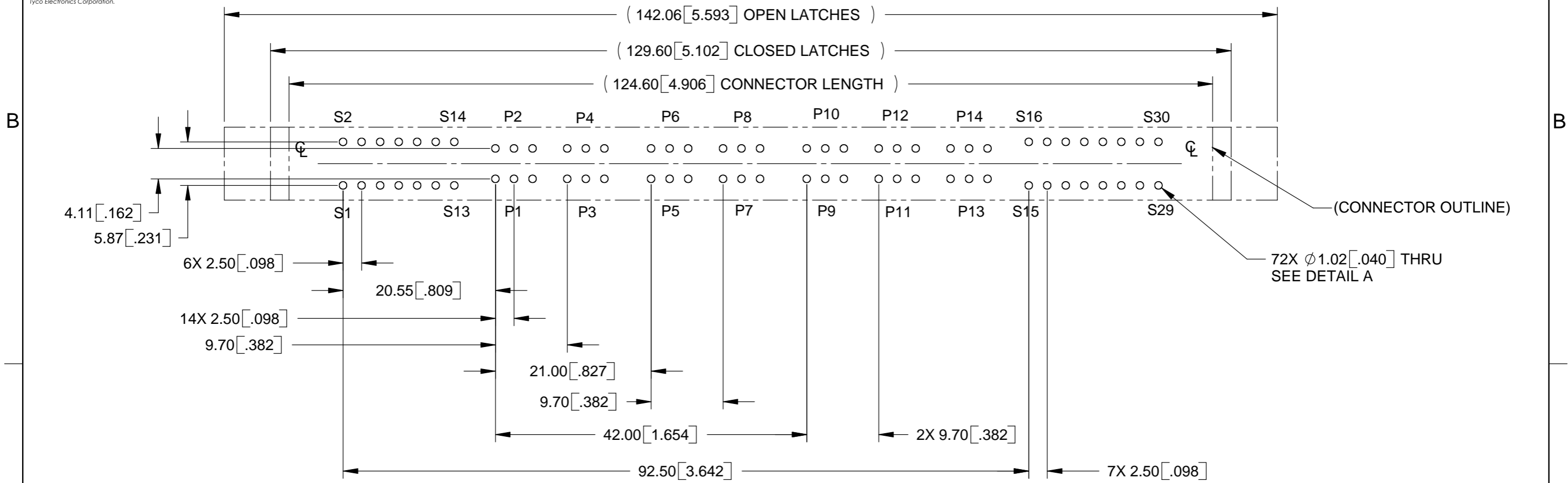


TYCO CONFIDENTIAL

<p>THIRD ANGLE PROJECTION</p> <p>UNLESS OTHERWISE SPECIFIED DIMENSIONS ARE IN METRIC [INCHES]</p> <p>TOLERANCES</p> <p>ANGLES ± 2.0°</p> <p>DECIMALS</p> <p>.XX ± 0.25 [010]</p> <p>.X ± 0.5 [02]</p>	<p>DRAWN</p> <p>HA NGUYEN</p>	<p>DATE</p> <p>03/22/04</p>	<p>Tyco Electronics Corporation</p> <p>Menlo Park, CA 94025</p>	<p>ELCON</p>		
	<p>CHECKED</p>	<p>APPROVED</p>	<p>APPROVED</p> <p>D. CHAU</p> <p>10/26/04</p>	<p>TITLE</p> <p>SOCKET CONNECTOR</p> <p>MC-P7S15 MINI CROWNEDGE WITH LATCHES</p> <p>14 POWERS, 30 SIGNALS, SOLDER TAIL</p> <p>PN: 284-0313-00900 (MACHINED) ⁹</p>	<p>SIZE</p> <p>B</p>	<p>DWG NUMBER</p> <p>C = 1766308</p>
<p>FILE NAME</p> <p>C1766308C3.SLDDRW</p>		<p>DWG SCALE: 2 = 1</p>		<p>SH 3 OF 5</p>		

This drawing involves proprietary design rights of Tyco Electronics Corporation, and all design, manufacture, reproduction, use and sale rights regarding the same are expressly reserved. It is submitted for a specific purpose and the recipient by accepting this drawing, assumes custody and control and agrees to take reasonable precautions: (a) that this drawing will not be copied and reproduced, in whole or in part, or its contents revealed in any manner, or to any person except to meet the purpose for which it was delivered and (b) that any special features peculiar to this design will not be incorporated in other projects without the expressed written permission of Tyco Electronics Corporation.

REVISIONS			
EC	REV	DESCRIPTION	DATE
		SEE SHEET 1	



RECOMMENDED PCB LAYOUT
AS VIEW FROM CONNECTOR MOUNTING SIDE

TYCO CONFIDENTIAL

RECOMMENDED PRINTED CIRCUIT HOLE

FINISHED HOLE: ϕ 1.02 [.040] \pm 0.08 [.003]
 RILLED HOLE: ϕ 1.15 [.0453] \pm 0.013 [.0005]
 UPPER PLATE: 0.025 [.0010] MINIMUM (PER SURFACE)
 TIN PLATE: 0.008 [.0003] MINIMUM (PER SURFACE)

DETAIL A

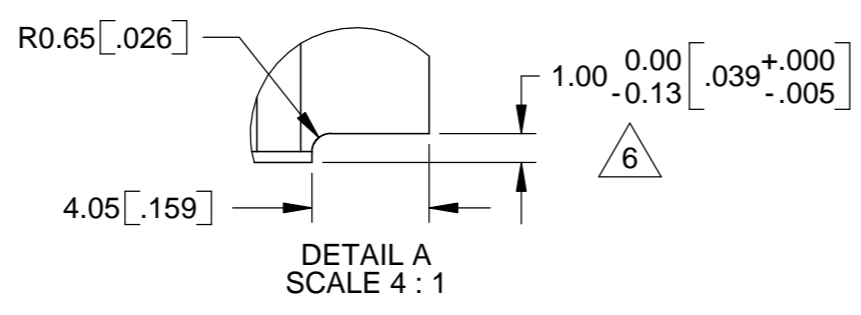
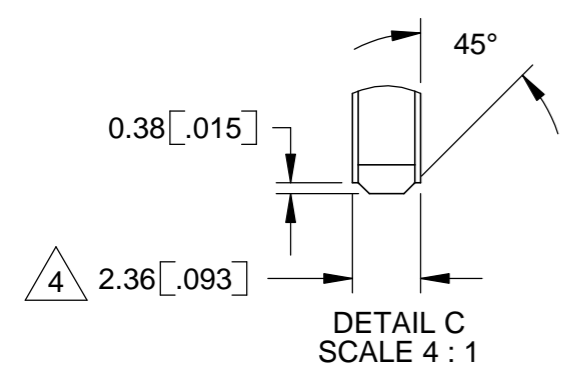
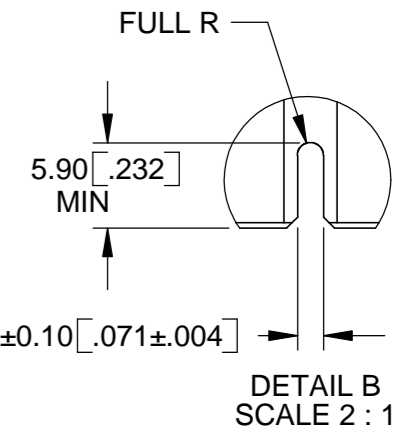
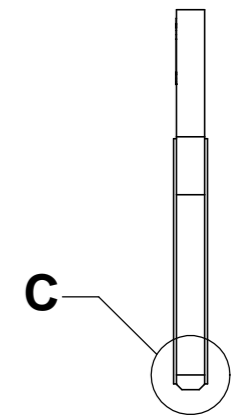
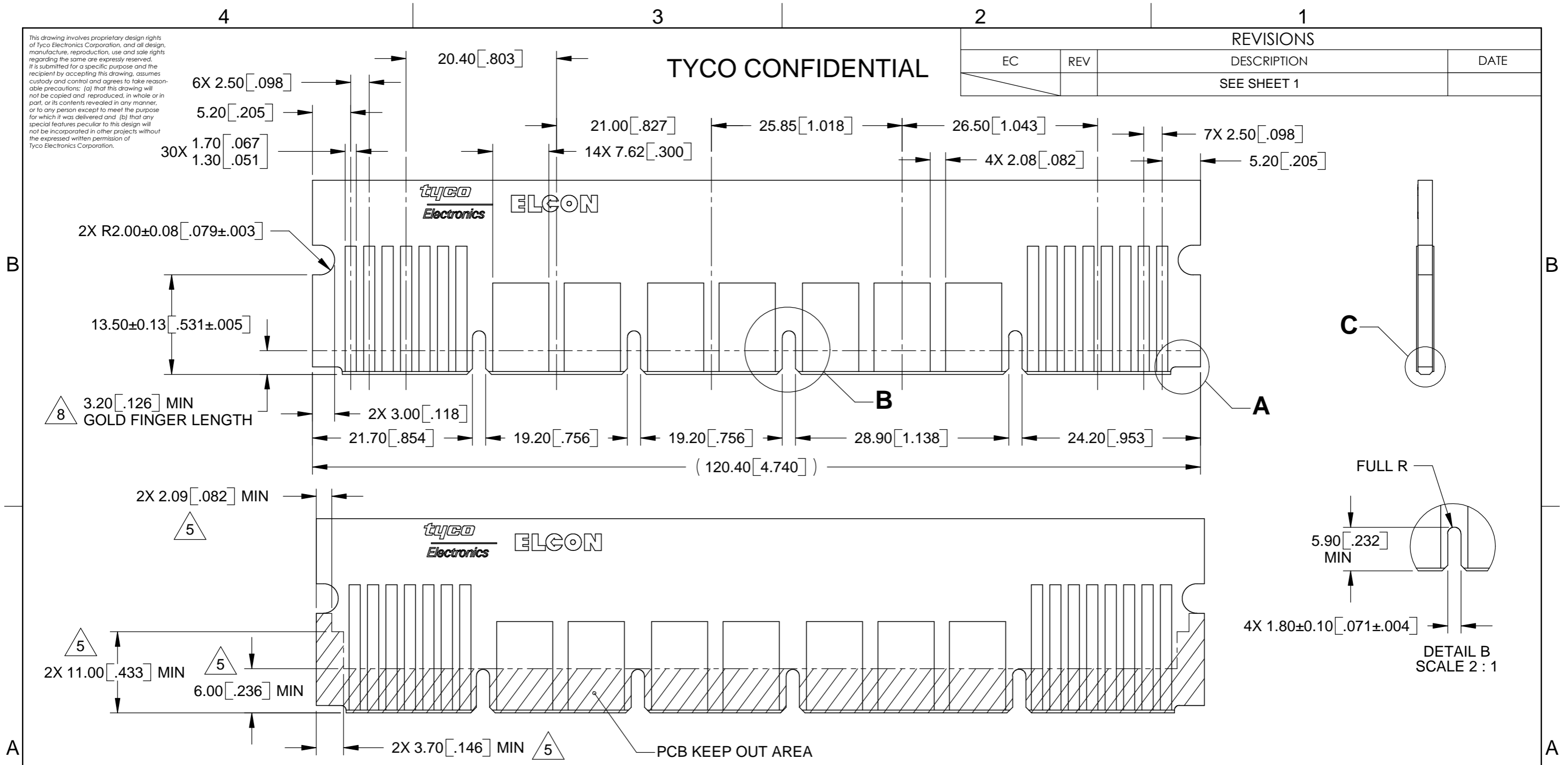
 THIRD ANGLE PROJECTION UNLESS OTHERWISE SPECIFIED DIMENSIONS ARE IN METRIC [INCHES] TOLERANCES ANGLES \pm 2.0° DECIMALS .XX \pm 0.25 [.010] .X \pm 0.5 [.02]	DRAWN HA NGUYEN	DATE 03/22/04	Tyco Electronics Corporation Menlo Park, CA 94025	
	CHECKED	APPROVED	APPROVED D. CHAU	10/26/04
DCA APPROVED M. ALIM	10/26/04	SIZE B	DWG NUMBER C = 1766308	REV. C3
FILE NAME C1766308C3.SLDDRW	DWG SCALE: 2 = 1	SH 4 OF 5		

This drawing involves proprietary design rights of Tyco Electronics Corporation, and all design, manufacture, reproduction, use and sale rights regarding the same are expressly reserved. It is submitted for a specific purpose and the recipient by accepting this drawing, assumes custody and control and agrees to take reasonable precautions: (a) that this drawing will not be copied and reproduced, in whole or in part, or its contents revealed in any manner, or to any person except to meet the purpose for which it was delivered and (b) that any special features peculiar to this design will not be incorporated in other projects without the expressed written permission of Tyco Electronics Corporation.

TYCO CONFIDENTIAL

REVISIONS

EC	REV	DESCRIPTION	DATE
		SEE SHEET 1	



<p>THIRD ANGLE PROJECTION</p> <p>UNLESS OTHERWISE SPECIFIED DIMENSIONS ARE IN METRIC [INCHES]</p> <p>TOLERANCES</p> <p>ANGLES ± 2.0°</p> <p>DECIMALS</p> <p>.XX ± 0.25 [.010]</p> <p>.X ± 0.5 [.02]</p>	<p>DRAWN</p> <p>HA NGUYEN</p>	<p>DATE</p> <p>03/22/04</p>	Tyco Electronics Corporation Menlo Park, CA 94025
	<p>CHECKED</p>		<p>TITLE</p> <p>USER INFORMATION FOR MATING BOARD AND RECOMMENDED PCB KEEP OUT AREA</p>
	<p>APPROVED</p>		<p>SIZE</p> <p>B</p>
	<p>APPROVED</p> <p>D. CHAU</p>	<p>10/26/04</p>	<p>DWG NUMBER</p> <p>C = 1766308</p>
	<p>DCA APPROVED</p> <p>M. ALIM</p>	<p>10/26/04</p>	<p>REV.</p> <p>C3</p>
<p>FILE NAME</p> <p>C1766308C3.SLDDRW</p>	<p>DWG SCALE: 2 = 1</p>		<p>SH 5 OF 5</p>