



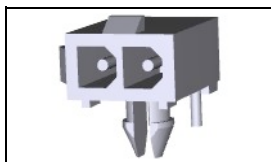
Have a Question?
 Chat with a Product
 Information Specialist

What can we help you find?

[Products](#) |
 [Industries](#) |
 [Resources](#) |
 [About TE](#) |
 [My Account](#) |
 [Innovation](#) |
 [Support Center](#)

1-770966-0 Product Details

[Share](#) |
 [Print](#) |
 [Email](#)



1-770966-0

TE Internal Number: 1-770966-0

Active

[View 3D PDF](#)

.163" Centerline, 600 V, 9.5 A max.

Always EU RoHS/ELV Compliant (Statement of Compliance)

Product Highlights:

- Mini-Universal MATE-N-LOK Product Line, Mini-Universal MATE-N-LOK 2 Product Line
- Wire-to-Board
- Applies To Printed Circuit Board
- Connector
- Glow Wire Rating = Standard Part - Not Glow Wire

[View all Features](#)

Quick Links

- ▶ [Pricing & Availability](#)
- ▶ [Search for Tooling](#)
- ▶ [View Mating Products \(3\)](#)
- ▶ [Product Feature Selector](#)
- ▶ [Contact Us About This Product](#)

[Add to My Part List](#) |
 [Request Sample](#) |
 [Find Similar Products](#) |
 [Buy Product](#)

Documentation & Additional Information	
<p>Product Drawings:</p> <ul style="list-style-type: none"> • HEADER ASSEMBLY, RIGHT ANGLE, WITH SHORT PEG, 2 CIRC... (PDF, English) <p>Catalog Pages/Data Sheets:</p> <ul style="list-style-type: none"> • 1-1773458-0_MINI_UNIVERSAL_MATE_N_LOK_CONNECTOR_SYST... (PDF, English) • SOFT_SHELL_PIN_AND_SOCKET_CONNECTORS_CATALOG (PDF, English) <p>Product Specifications:</p> <ul style="list-style-type: none"> • None Available <p>Application Specifications:</p> <ul style="list-style-type: none"> • Mini-Universal MATE-N-LOK Splash-Proof Sealed Connectors (PDF, English) • Mini-Universal MATE-N-LOK Connectors (PDF, English) <p>Instruction Sheets:</p> <ul style="list-style-type: none"> • None Available <p>CAD Files: (CAD Format & Compression Information)</p> <ul style="list-style-type: none"> • 2D Drawing (DXF, Version F) • 3D Model (IGES, Version F) • 3D Model (STEP, Version F) 	<p>Additional Information:</p> <ul style="list-style-type: none"> • Product Line Information <p>Related Products:</p> <ul style="list-style-type: none"> • Tooling • Mating Products (3)

[List all Documents](#)

Product Features (Please use the Product Drawing for all design activity)	
<p>Product Type Features:</p> <ul style="list-style-type: none"> • Product Line = Mini-Universal MATE-N-LOK, Mini-Universal MATE-N-LOK 2 • Product Type = Connector • Connector Type = Header • Termination Method to Wire/Cable = Solder • PCB Mounting Orientation = Right Angle • PCB Mount Retention = With • Sealed = No • Termination Method to PC Board = Through Hole - Solder <p>• PCB Mount Retention Type = Boardlock(s)</p> <p>• PCB Mount Alignment = Without</p> <p>• Strain Relief = Without</p> <p>• UL File Number = E28476</p> <p>• CSA File Number = LR 7189</p> <p>Mechanical Attachment:</p> <ul style="list-style-type: none"> • Contact Retention = Without • Mating Retention Type = Locking Tab • Panel Mount Retention = Without <p>Electrical Characteristics:</p> <ul style="list-style-type: none"> • Contact - Rated Current (A) = 9.5 • Operating Voltage Reference = AC/DC • Operating Voltage (VAC) = 600 • Operating Voltage (VDC) = 600 	<p>Housing Features:</p> <ul style="list-style-type: none"> • Connector Style = Plug • Housing Material = Nylon • Housing Color = White • Mating Alignment = With • Mating Alignment Type = Chamfered Edges • Centerline (mm [in]) = 4.14 [0.163] • UL Flammability Rating = UL 94V-0 <p>Configuration Features:</p> <ul style="list-style-type: none"> • Number of Rows = 1 • Number of Positions = 2 <p>Industry Standards:</p> <ul style="list-style-type: none"> • RoHS/ELV Compliance = RoHS compliant, ELV compliant • Lead Free Solder Processes = Wave solder capable to 260°C, Wave solder capable to 240°C, Wave solder capable to 265°C • RoHS/ELV Compliance History = Always was RoHS compliant • VDE Tested = Yes • Agency/Standard = CSA, UL • UL Rating = Recognized • CSA Rating = Certified <p>Environmental:</p> <ul style="list-style-type: none"> • Operating Temperature (°C [°F]) = -20 - +85 [-4 - +185] <p>Conditions for Usage:</p> <ul style="list-style-type: none"> • Applies To = Printed Circuit Board

Termination Features:

- Tail Length (mm [in]) = 3.68 [0.145]

Dimensions:

- PCB Thickness, Recommended (mm [in]) = 1.57 [0.062]

Body Features:

- Used With = Plug Housing
- Mating Retention = With
- Underplate Material Thickness (μm [μin]) = 1.27 [50.000]
- Assembly Integration Feature = Without

Contact Features:

- Contact Type = Pin
- Contact Layout = In-Line
- Contact Diameter (mm [in]) = 0.99 [0.039]
- Contact Base Material = Brass
- Contact Plating, Mating Area, Material = Matte Tin
- Contact Plating, Mating Area, Thickness (μm [μin]) = 3.81 [150]
- Tail Plating Material = Matte Tin
- [Solder Process Drain Hole](#) = Without
- Shunts/Shorting Bars = Without
- Multiple Contact Types = Without
- Tail Plating Thickness (μm [μin]) = 3.81 [150]
- Underplate Material = Nickel

- Glow Wire Rating = Standard Part - Not Glow Wire

Operation/Application:

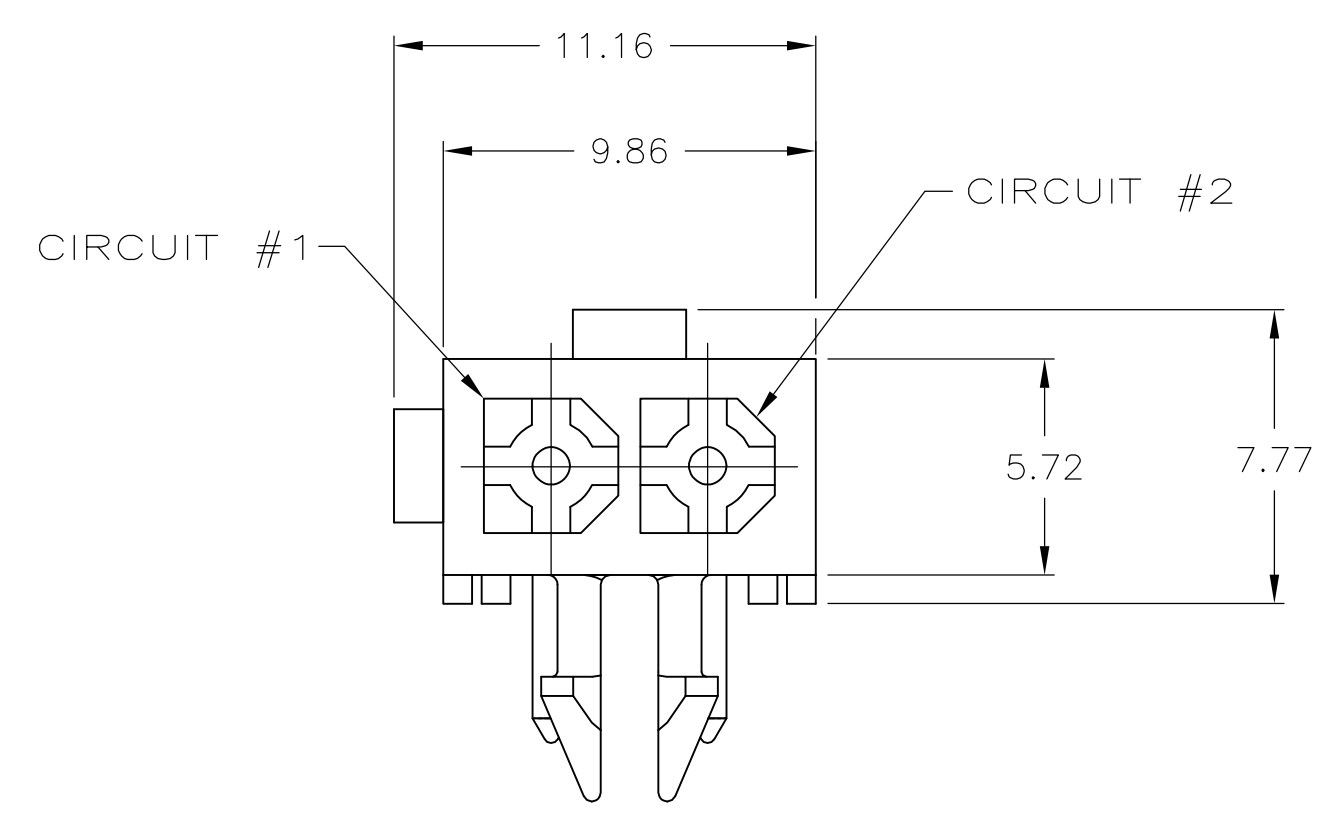
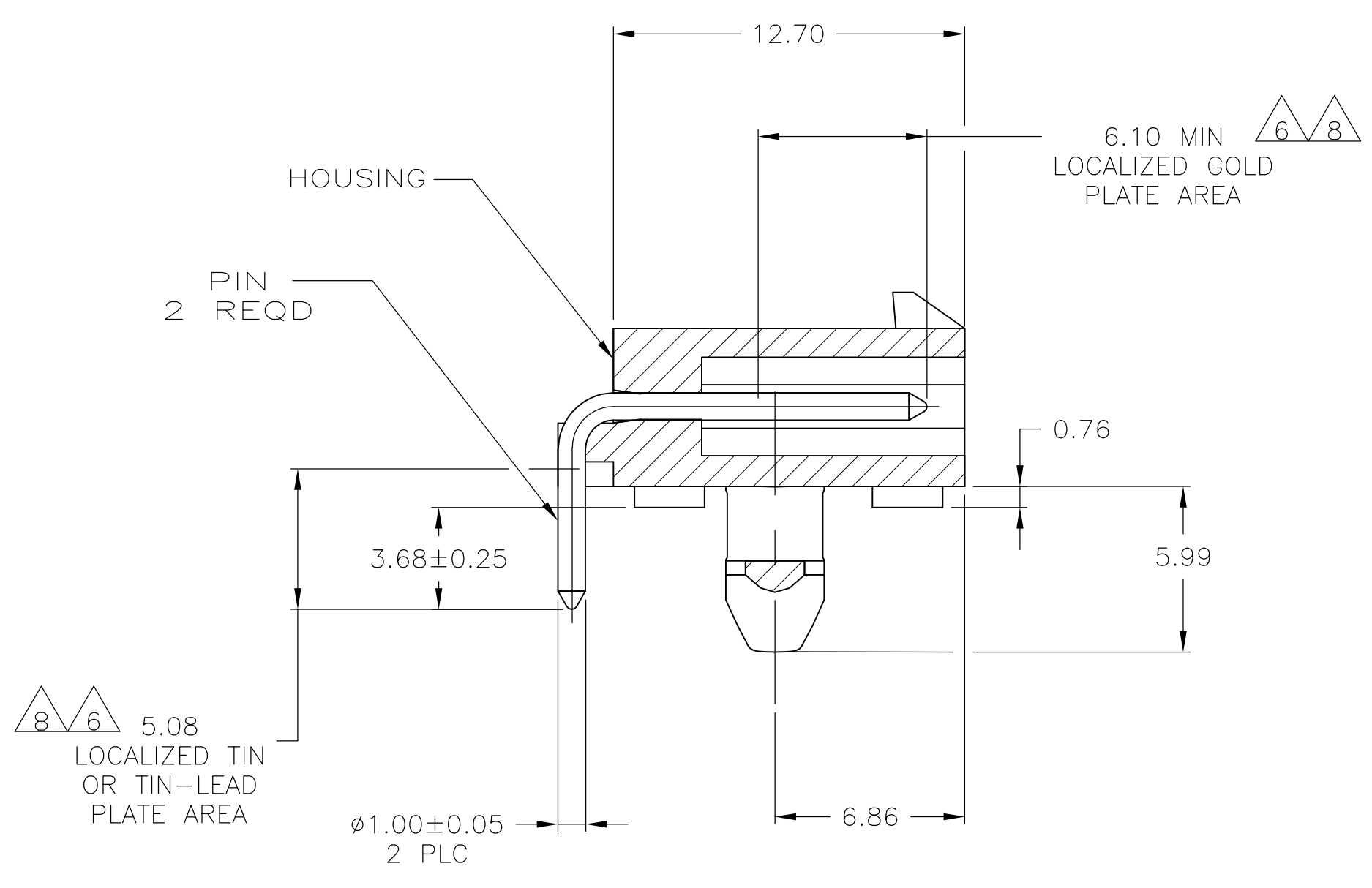
- Application Use = Wire-to-Board

Packaging Features:

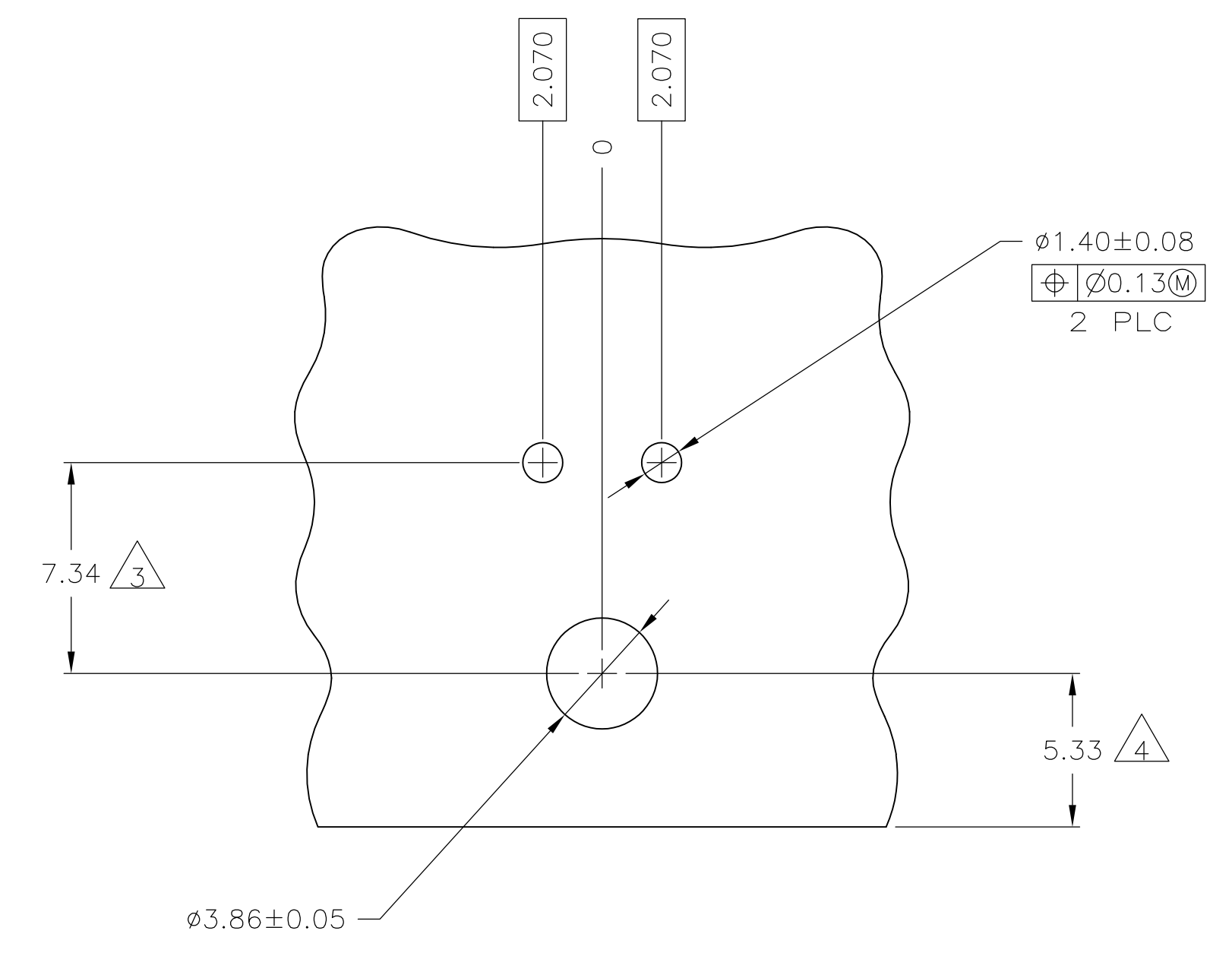
- Packaging Method = Bag
- Packaging Quantity = 200

Other:

- Brand = AMP



- PINS TO COMPLY WITH AMP SOLDERABILITY SPEC 109-11-3.
- MATES WITH PLUG P/N 172165-1.
- COORDINATE DIMENSION APPLIES FROM CENTER OF ACTUAL FEATURE.
- RECOMMENDED FOR EDGE MOUNTING.
- 0.00381 MIN MATTE TIN LEAD OVER 0.00127 MIN NICKEL ENTIRE LENGTH OF PIN.
- 0.00076 MIN GOLD PLATE IN THE LOCALIZED PLATE AREA, 0.00381 MIN MATTE TIN LEAD IN THE LOCALIZED PLATE AREA, BOTH OVER 0.00127 MIN NICKEL.
- 0.00381 MIN MATTE TIN OVER 0.00127 MIN NICKEL ENTIRE LENGTH OF PIN.
- 0.00076 MIN GOLD PLATE IN THE LOCALIZED GOLD PLATE AREA, 0.00381 MIN MATTE TIN IN THE LOCALIZED TIN PLATE AREA, BOTH OVER 0.00127 MIN NICKEL.



RECOMMENDED MOUNTING HOLE PATTERN FOR 1.57 THICK P.C. BOARD

2.070	.0815	-	-
1.57	.062	12.70	.500
1.40	.055	9.86	.388
1.00	.039	7.34	.289
0.76	.030	6.86	.270
0.25	.010	6.10	.240
0.13	.005	5.99	.236
0.08	.003	5.72	.225
0.05	.002	5.33	.210
0.00381	0.000150	5.08	.200
0.00127	0.000050	3.86	.152
0.00076	0.000030	3.68	.145
MM	IN	MM	IN

BRASS	8	NYLON, UL94V-0	WHITE	1-770966-1
BRASS	7	NYLON, UL94V-0	WHITE	1-770966-0
BRASS	6	NYLON, UL94V-0	WHITE	770966-2
BRASS	5	NYLON, UL94V-0	WHITE	770966-1
MATERIAL FINISH		MATERIAL	COLOR	PART NO.
PIN		HOUSING		

THIS DRAWING IS A CONTROLLED DOCUMENT.

DIMENSIONS: mm	TOLERANCES UNLESS OTHERWISE SPECIFIED:	DIN S. CARPENTER 24JUL2003	APVD C. JONES 24JUL2003
0 PLC ± -	1 PLC ± -	2 PLC ± -	3 PLC ± 0.13
4 PLC ± -	ANGLES ± -	NAME: HEADER ASSEMBLY, RIGHT ANGLE, WITH SHORT PEG, 2 CIRCUIT, MINI UNIVERSAL MATE-N-LOK(TM)	
MATERIAL SEE TABLE	FINISH SEE TABLE	WEIGHT -	SIZE: A1 00779 C=770966
CUSTOMER DRAWING		SCALE: 5:1	SHEET 1 OF 1 REV F1

