

179609-1 Product Details

[Share](#) [Print](#) [Email](#)



179609-1

TE Internal Number: 179609-1

Active

[View 3D PDF](#)

2mm AMP CT Connectors

Always EU RoHS/ELV Compliant
(Statement of Compliance)

Product Highlights:

- Wire-to-Board, Wire-to-Board / Wire-to-Wire, Wire-to-Wire
- Applies To Wire/Cable
- Contact
- Contact Type = Socket
- Wire/Cable Size = 26 - 30 AWG

[View all Features](#)

Quick Links

- ▶ [Pricing & Availability](#)
- ▶ [Search for Tooling](#)
- ▶ [View Housings \(14\)](#)
- ▶ [Product Feature Selector](#)
- ▶ [Contact Us About This Product](#)

[Add to My Part List](#)

[Request Sample](#)

[Find Similar Products](#)

[Buy Product](#)

Documentation & Additional Information

Product Drawings:

- [CRIMP TYPE II RECEPTACLE CONTACT \(AMP CT CONNECTOR 2... \(PDF, English\)](#)

Catalog Pages/Data Sheets:

- [2.0MM_AMP_CT_CONNECTOR_SERIES_QUICK_REF_GUIDE \(PDF, English\)](#)
- [POWER_CONNECTORS_CATALOG_SEC02_CABLE_MOUNTED \(PDF, English\)](#)

Product Specifications:

- [AMP Common Termination\(CT\), Conn, 2mm Pitch, Crimp T... \(PDF, English\)](#)
- [AMP Common Termination \(CT\) Connector, 2mm Pitch Cri... \(PDF, English\)](#)

Application Specifications:

- [Crimping of AMP 2.0mm Pitch, CT Crimp TypeII Rec Contact \(PDF, English\)](#)

Instruction Sheets:

- None Available

CAD Files: (CAD Format & Compression Information)

- [2D Drawing \(DXF, Version B1\)](#)
- [3D Model \(IGES, Version B1\)](#)
- [3D Model \(STEP, Version B1\)](#)

[List all Documents](#)

Related Products:

- [Tooling](#)
- [Housings \(14\)](#)

Product Features (Please use the Product Drawing for all design activity)

Product Type Features:

- [Product Type](#) = Contact
- Termination Method to Wire/Cable = Crimp

Electrical Characteristics:

- Contact - Rated Current (A) = 2
- Operating Voltage Reference = AC/DC, AC, DC
- Operating Voltage (VAC) = 125
- Operating Voltage (VDC) = 125

Industry Standards:

- [RoHS/ELV Compliance](#) = RoHS compliant, ELV compliant
- [Lead Free Solder Processes](#) = Not relevant for lead free process
- [RoHS/ELV Compliance History](#) = Always was RoHS compliant

Environmental:

- [Operating Temperature \(°C \[°F\]\)](#) = -30 - +105 [-22

Termination Features:

- Wire/Cable Size (AWG) = 26 - 30

Body Features:

- Mating Retention = Without

Contact Features:

- Contact Type = Socket
- Contact Plating, Mating Area, Material = Pre-Tin

- +221J

Conditions for Usage:

- Applies To = Wire/Cable
- Accepts Wire Insulation Diameter, Range (mm [in]) = 0.65 - 1.35 [0.0255 - 0.053]

Operation/Application:

- Application Use = Wire-to-Board, Wire-to-Board / Wire-to-Wire, Wire-to-Wire
- Contact Transmits (Typical Application) = Signal (Data)

Packaging Features:

- Packaging Method = Strip

Other:

- Brand = AMP

Corporate Information

[About TE](#)
[Investors](#)
[News Room](#)
[Supplier Portal](#)
[Careers](#)
[Terms & Conditions](#)
[Privacy Policy](#)

Quick Links

[Distributor Inventory](#)
[Product Cross Reference](#)
[Documents & Drawings](#)
[Product Compliance Support Center](#)
[Site Map](#)

Customer Support

[Email or Chat With Us](#)
[Find a Phone Number](#)
[Knowledge Base](#)
[Manage Your Account](#)

Keep Me Informed

NUMBER C-179609

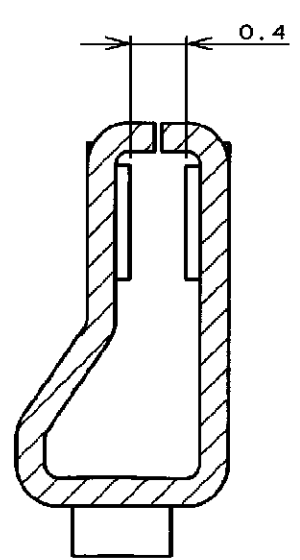
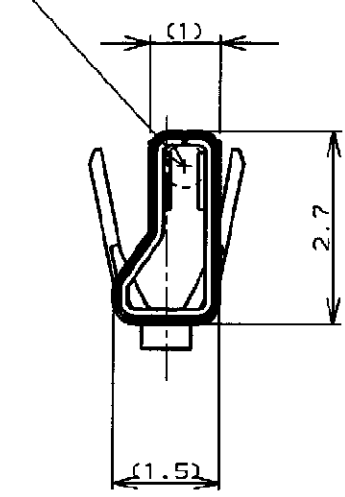


METRIC

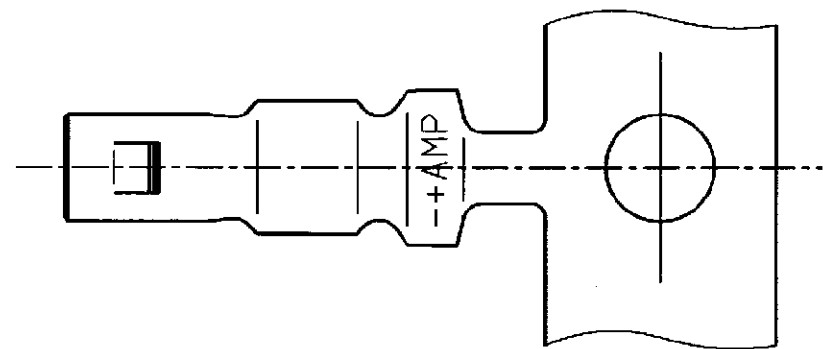
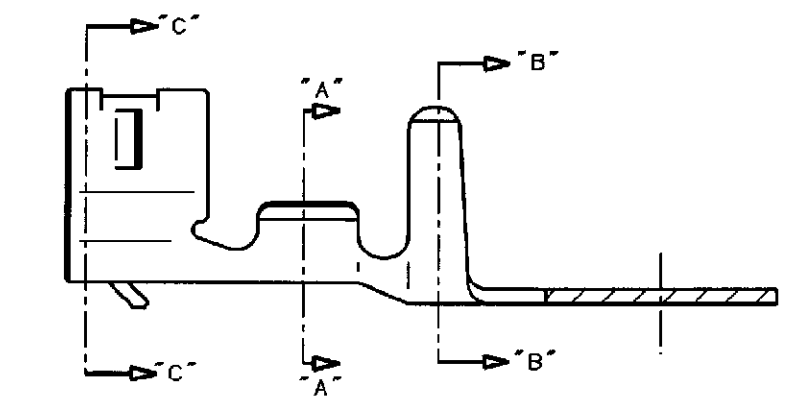
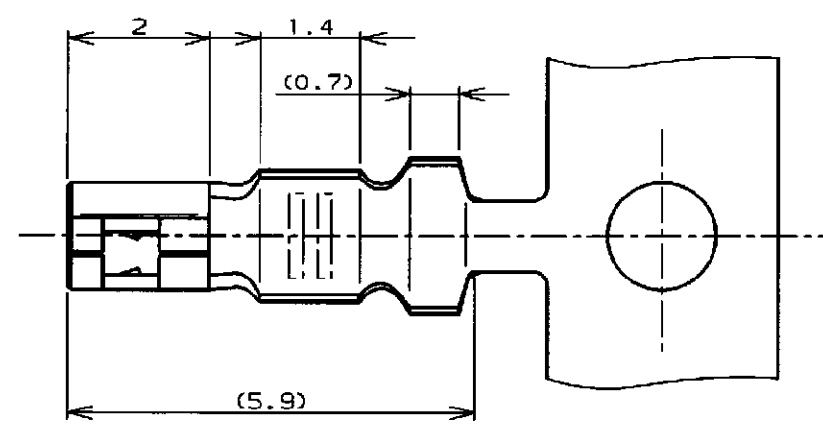
DIMENSIONS IN MILLIMETERS. DO NOT SCALE PRINT

PRINT DIST

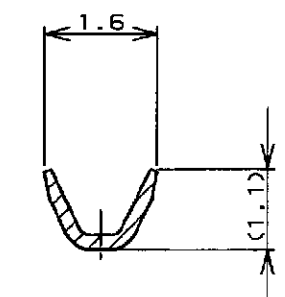
MATE 0.6 DIA POST
Ø0.6ポストと嵌合



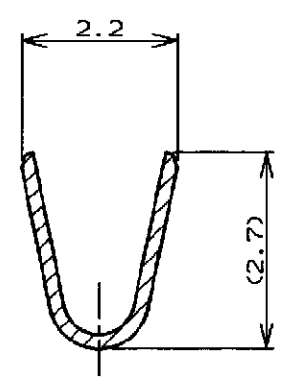
SECT "C" - "C"
(SCALE 20-1)



SECT "A" - "A"



SECT "B" - "B"



注:

1. 使用ハウジングは型番 179228
2. 製品規格 : 108-5408
3. 取付適用規格 , 114-5179

NOTES,

1. USE HOUSING ; P/N 179228
2. PRODUCT SPEC ; 108-5408
3. APPLICATION SPEC ; 114-5179

PRE TINNED PHOSPHOR BRONZE (0.2t) 錫めっき赤磷黄銅、(板厚0.2)	179609-1
MATERIAL & FINISH 材質	PART NO. 型番



WIRE RANGE 0.05 ~0.12 mm ² (AWG30-26)	INSULATION DIA 0.65-1.35 mmφ	NAME 圧着タイプIIリセコンタクト CRIMP TYPE II RECEPTACLE CONTACT (AMP CT CONNECTOR 2mm PITCH)		
MATERIAL SEE TABLE 表参照	FINISH SEE TABLE 表参照	GENERAL TOLERANCE	SIZE B	LOC J
DR. T. FURUYA 1/23 '95 DE. T. FURUYA 1/23 '96		10<= 30 : ±0.25	NUMBER C-179609	
CHK. S. KUBOUCHI 1/23 '96 APP. S. Kubouchi 1/23 '96		30<= 100 : ±0.3	SCALE 10-1	REV. B2
B2 REVISED PER ECO-11-005294 RK HMR 5APR11		ANGLES : ±3°	SHEET 1 OF 1	
LTR REVISION RECORD DR CHK DATE				