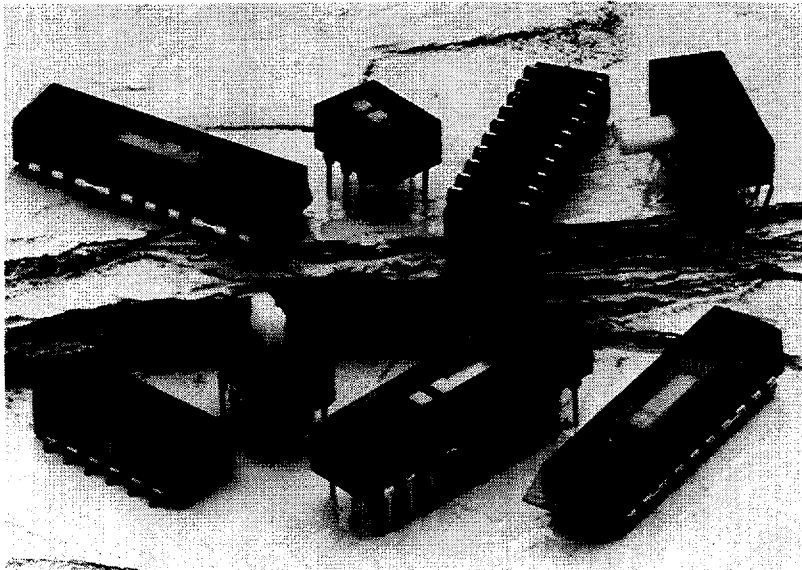


ASE/F SERIES

Auto Insertable Slide Switch • Telecom Grade



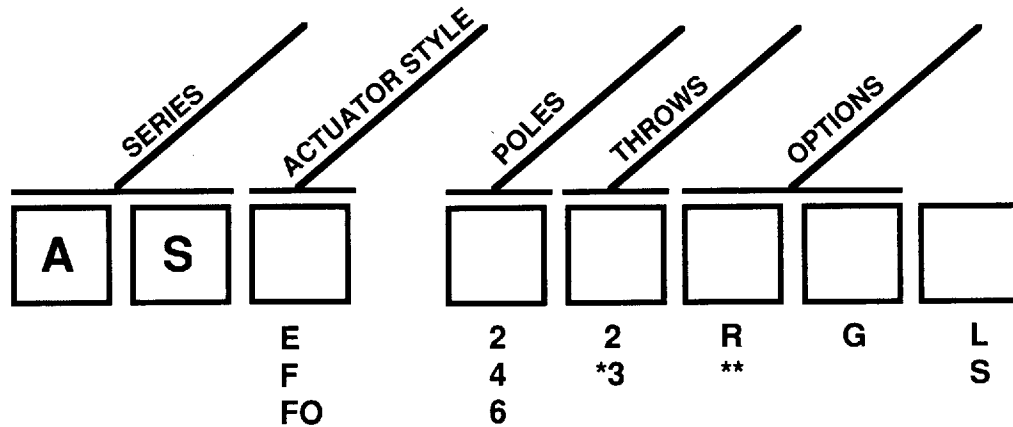
FEATURES

- Unique design allows ASE/F to withstand aqueous or solvent cleaning processes.
- High temperature anti-static plastic construction will withstand surface mount, vapor phase reflow or wave soldering conditions.
- Three standard types:
 ASF -DIP package with flush actuator allows auto insertion on standard IC equipment . Standard tape seal and closed case construction provide process seal.
 ASFO- Open ended flush actuator with tape seal
 ASE- extended actuator open-ended case allows washout after process cleaning.
- 2,4 and 6 pole versions available with top or side actuator
- Bifurcated double wipe contacts provide dependable , telecom grade switching.
- Industry standard .100x .300 pin spacing
- Patent No. 4075442

SPECIFICATIONS

Contacts: Gold : .000030" over .000100" nickel
 silver: .000050" over nickel flash
Contact Rating gold: 0.4VA 20 VDC max. shorting type
 silver: 300mA @ 115VAC 28VDC
Insulation Resistance: 1000 megohms at 500VDC min.
Dielectric Strength: 1000 volts RMS at sea level
Life Expectancy: 10,000 cycles min.
Solder Heat Resistance: see page 11

Case Material: thermoplastic
Actuator Material: thermoplastic
Terminals: 0000200" 60/40 - tin/lead
Packaging: 22" anti-static tube
Operating Temperature: -40°C to +200°C(-40°F to 392°F)
Storage Temperature: -20°C to +100°C(-4°F to 212°F)
Terminals/Fixed Contacts: copper alloy



ASF: Tape seal, closed (sealed) case, flush top actuator.
ASE: Open ended case, extended top or side actuator.
ASFO: Open ended case, extended top or side actuator.

Silver plated contacts/terminals on all models. Standard actuator color is white.

- E= EXTENDED ACTUATOR
- F= FLUSH ACTUATOR
- FO= OPEN ENDED FLUSH ACTUATOR WITH TAPE SEAL
- G=GOLD CONTACTS
- R=SIDE ACTUATOR
- *3= THROWAVAILABLE IN 4 POLE ONLY
- L=SMT TERMINAL CONFIGURATION
- S=SMT TERMINAL REVERSE L CONFIGURATION

** Flush side actuator "R" versions are supplied with open ended case and without tape seal.
 NOTE: For SPDT requirements, order DPDT version and use either set of contacts for SPDT switching.

SPECIFICATIONS SUBJECT TO CHANGE WITHOUT NOTICE.



Alcoswitch®

1551 Osgood Street

N. Andover, MA 01845 USA

Tel: (508)685-4371

FAX: (508)686-9545

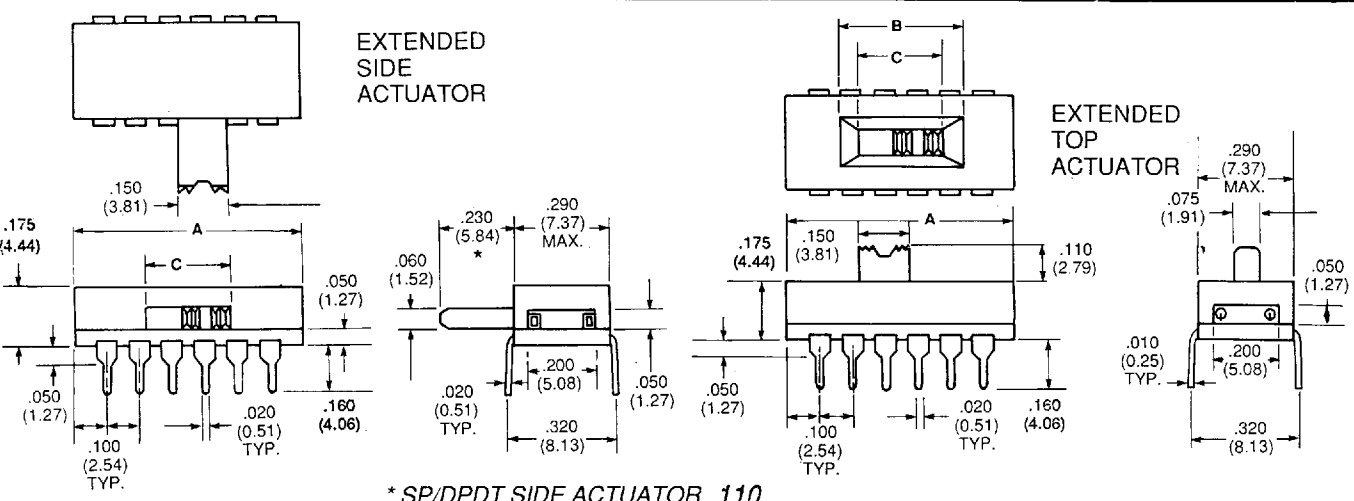
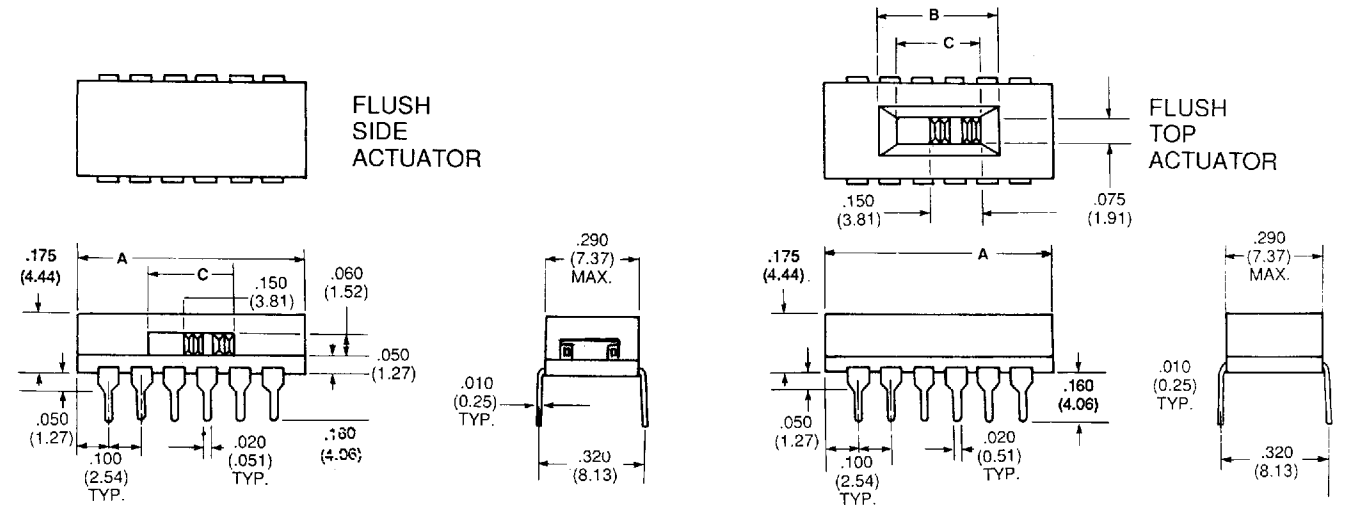
TLX: 275423

M1

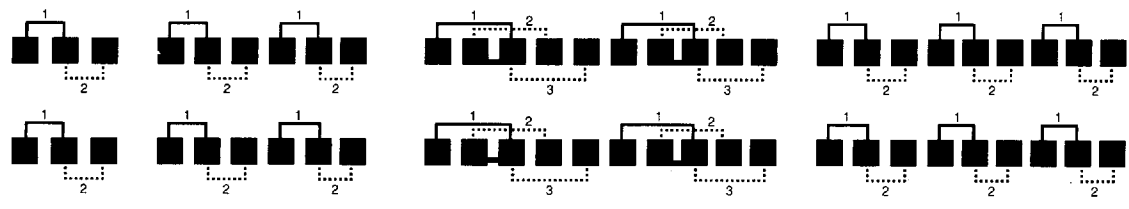
ASE/F SERIES

Auto Insertable Slide Switch • Telecom Grade

ASE/F SERIES DIMENSIONS



CIRCUIT DIAGRAMS



NOTE: For SPDT requirements order DPDT version and use either set of contacts for SPDT switching.

DIMENSION CHART

PATENT PENDING

CONFIGURATION	BODY LENGTH DIMENSION "A"	SLOT LENGTH DIMENSION "B"	BEVEL LENGTH DIMENSION "C"
DPDT	.400/10.2mm	.370/9.4mm	.260/6.6mm
4PDT	.700/17.8mm	.370/9.4mm	.260/6.6mm
4P3T	1.10/27.9mm	.470/11.9mm	.360/9.1mm
6PDT	1.00/25.4mm	.370/9.4mm	.260/6.6mm

AUTO-SLIDE T.M.

DIMENSION CHART

SPECIFICATIONS SUBJECT TO CHANGE WITHOUT NOTICE.

AUGAT
M2

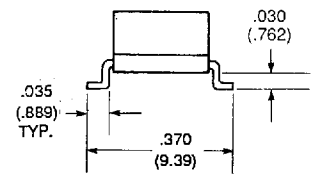
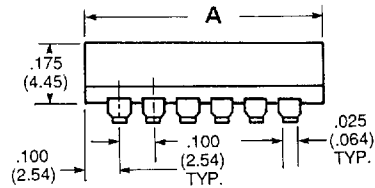
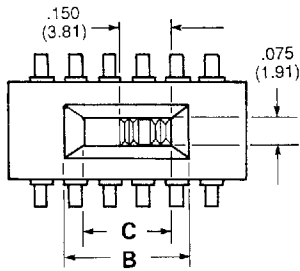
Alcoswitch® 1551 Osgood Street N. Andover, MA 01845 USA Tel: (508)685-4371 FAX: (508)686-9545 TLX: 275423



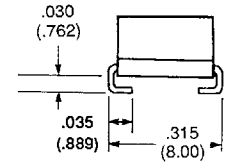
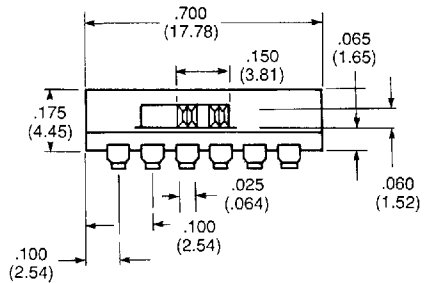
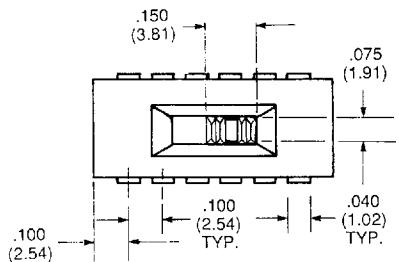
ASE/F SERIES

Auto Insertable Slide Switch • Telecom Grade

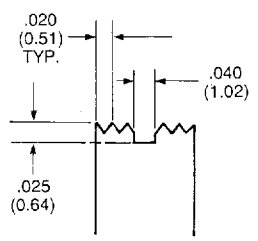
"L" PAD



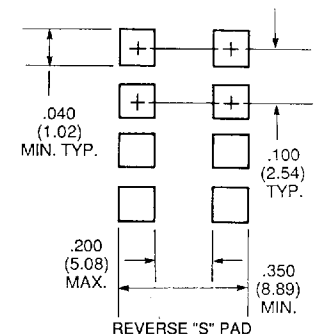
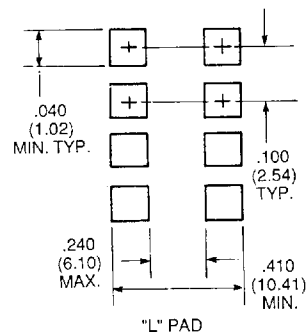
REVERSE "S" PAD



ACTUATOR DETAILS



PAD LAYOUT



Additional surface mount lead configurations are available. Contact factory for details. All body and actuator dimensions are identical to standard ASE/F.

SPECIFICATIONS SUBJECT TO CHANGE WITHOUT NOTICE.



Alcoswitch®

1551 Osgood Street

N. Andover, MA 01845 USA

Tel: (508)685-4371

FAX: (508)686-9545

TLX: 275423

M3