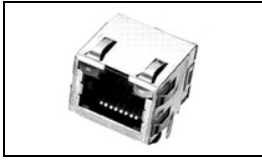


## 1888566-1 Product Details

[Share](#) [Print](#) [Email](#)



**1888566-1**

TE Internal Number: 1888566-1

 Active

 [View 3D PDF](#)

### PCB Mounted Jacks - Single Port, Multi-port and Stacked

 Always EU RoHS/ELV Compliant (Statement of Compliance)

#### Product Highlights:

- Connector
- Preloaded
- Single Port Configuration
- 1 x 1 Jack Configuration
- Jack Type = RJ45

[View all Features](#)

### Quick Links

- [▶ Pricing & Availability](#)
- [▶ Search for Tooling](#)
- [▶ Product Feature Selector](#)
- [▶ Contact Us About This Product](#)

[Add to My Part List](#)

[Request Sample](#)

[Find Similar Products](#)

[Buy Product](#)

### Documentation & Additional Information

#### Product Drawings:

- [INVERTED MODULAR JACK ASSEMBLY, 1X1, SHIELDED, PANEL...](#) (PDF, English)

#### Catalog Pages/Data Sheets:

- [1-1773464-9\\_MODULAR JACKS\\_SINGLE\\_PORT\\_PCB\\_MOUNT](#) (PDF, English)

#### Product Specifications:

- None Available

#### Application Specifications:

- None Available

#### Instruction Sheets:

- None Available

#### CAD Files: ([CAD Format & Compression Information](#))

- [2D Drawing \(DXF, Version B1\)](#)
- [3D Model \(IGES, Version B1\)](#)
- [3D Model \(STEP, Version B1\)](#)

[List all Documents](#)

#### Additional Information:

- [Product Line Information](#)

#### Related Products:

- [Tooling](#)

### Product Features (Please use the Product Drawing for all design activity)

#### Product Type Features:

- Product Type = Connector
- Jack Type = RJ45
- PCB Mounting Orientation = Side Entry (Right Angle)
- PCB Mount Style = Through Hole
- Performance Category = Cat 5
- LED = With
- Grounding Options = Panel Ground and PCB Ground
- Panel Stops = Without
- Keyed = No
- Profile = Standard
- Color = Black

#### Mechanical Attachment:

- Panel Mount Retention = With
- Flanged = No

#### Termination Features:

- Termination Method to PC Board = Solder

#### Dimensions:

- Height (mm [in]) = 13.34 [0.525]
- PCB Tail Length (mm [in]) = 3.58 [0.141]
- PCB Thickness, Recommended (mm [in]) = 1.57 [0.062]

#### Body Features:

- Inverted Jack Face = Yes
- Shield Plating = Tin
- Shield Material = Copper Alloy
- PCB Ground Tab Location (mm [in]) = 3.68 [0.145]

#### Contact Features:

- Solder Tail Contact Plating = Matte Tin over Nickel
- Contact Plating, Mating Area, Material = Gold (50)
- Contact Base Material = Phosphor Bronze

#### Housing Features:

- Housing Material = High Temperature Thermoplastic
- UL Flammability Rating = UL 94V-0

#### Configuration Features:

- Preloaded = Yes
- Port Configuration = Single
- Jack Configuration = 1 x 1
- Number of Positions = 8
- Shielded = Yes
- Number of Contacts Loaded = 8
- Number of PCB Ground Tabs = 2
- Panel Ground Location = Top and Side

#### Industry Standards:

- RoHS/ELV Compliance = RoHS compliant, ELV compliant
- Lead Free Solder Processes = Wave solder capable to 240°C, Wave solder capable to 260°C, Wave solder capable to 265°C
- RoHS/ELV Compliance History = Always was RoHS compliant

#### Identification Marking:

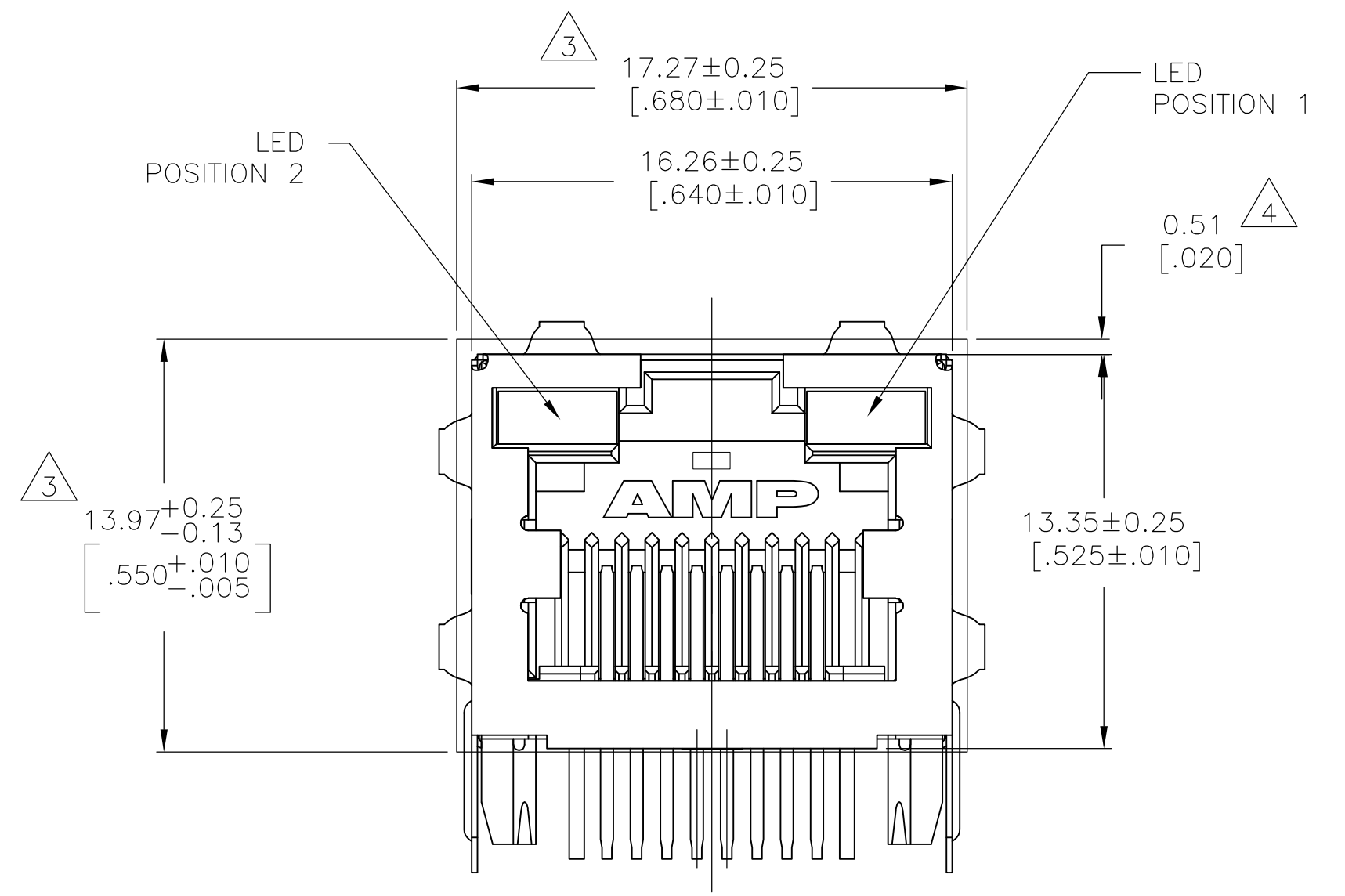
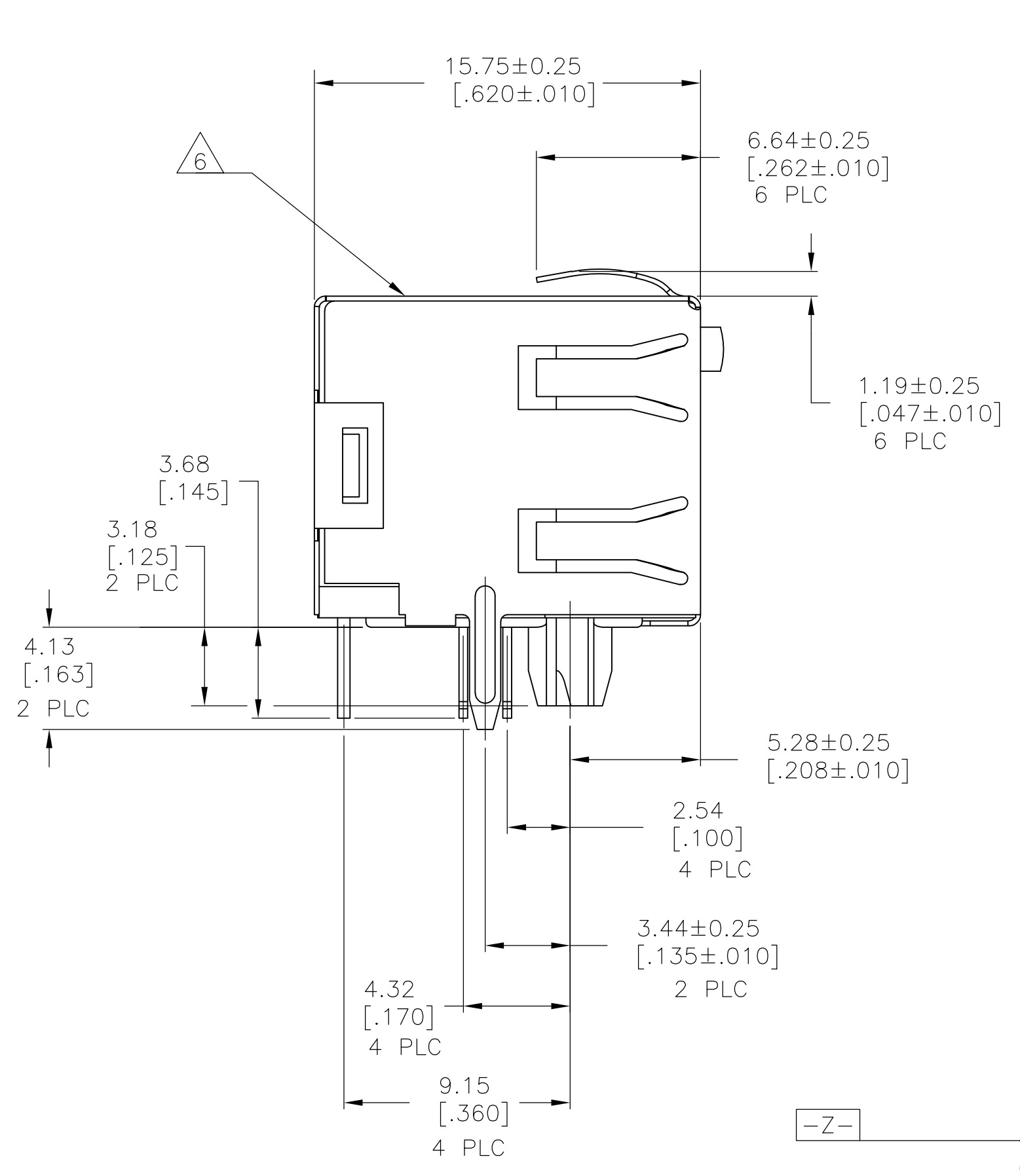
- LED Position 1 Color = Yellow/Green
- LED Position 2 Color = Yellow/Green
- LED Position 3 Color = None

#### Product Availability:

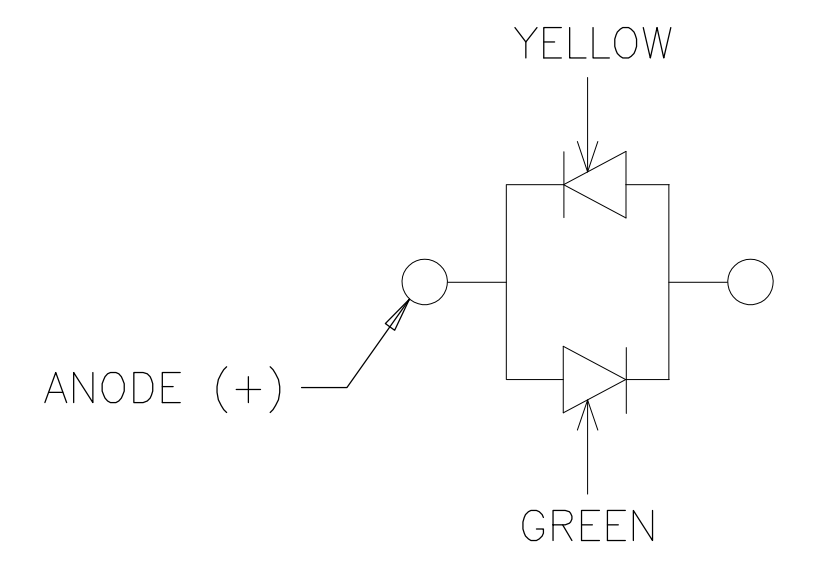
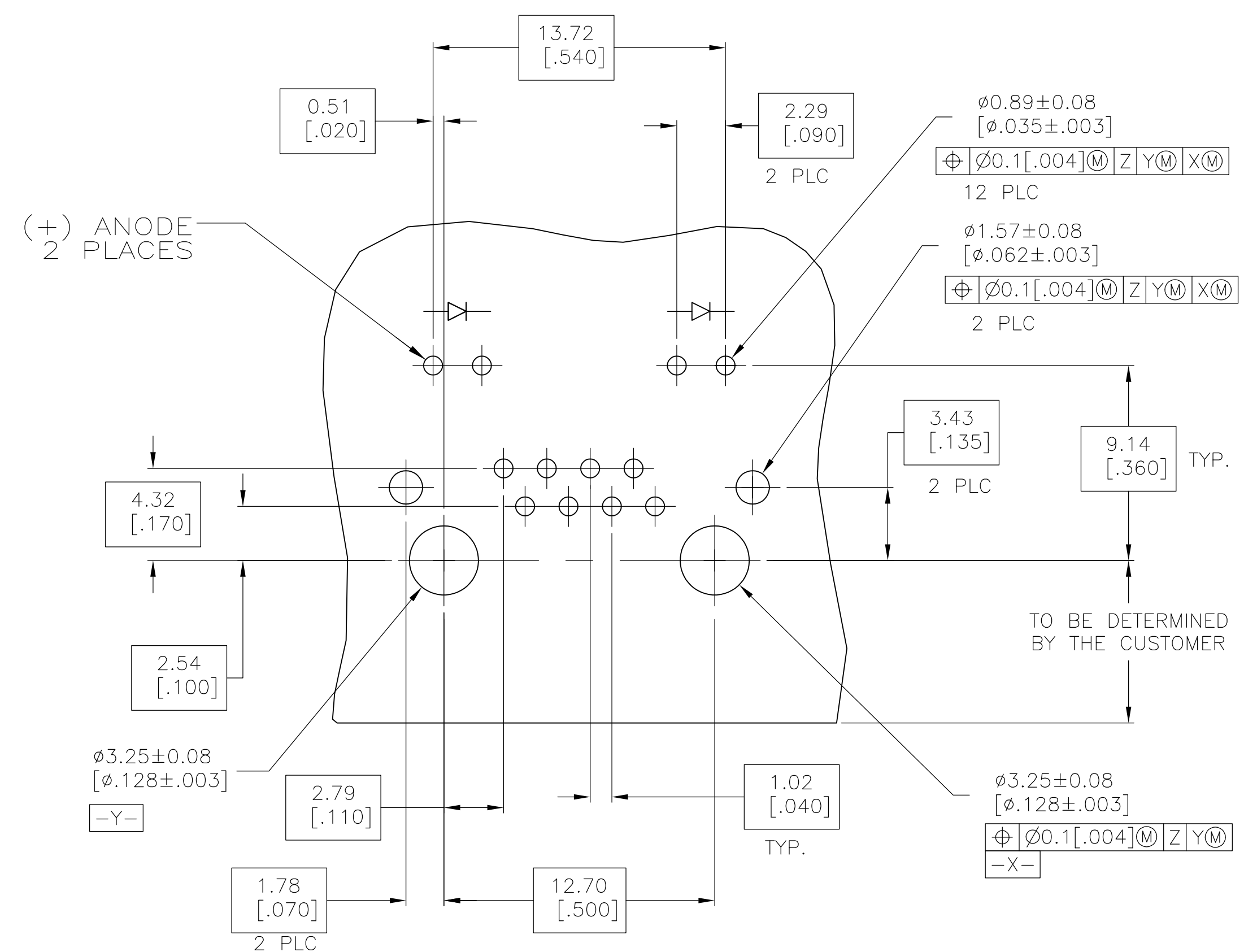
- Region = Asia, North America

#### Other:

- Brand = AMP
- Comment = Recommended applications: Fast Ethernet, 10Base-T Ethernet, and 10/100 Base-T Ethernet (Cat 5 on two pair 1/2, 3/6).



- 1 MATERIAL: HOUSING - HIGH TEMPERATURE THERMOPLASTIC, BLACK, UL94V-0.  
 TERMINALS - 0.36[.014] THICK PHOS BRONZE PLATED WITH 3.81μm[.000150] MINIMUM THICK MATTE TIN IN SOLDER AREA. 1.27μm [.000050] MINIMUM GOLD IN LOCALIZED PLATE AREA. ENTIRE TERMINAL PLATED WITH 1.27μm [.000050] MINIMUM THICK NICKEL.  
 SHIELD - 0.196[.0077] THICK COPPER ZINC ALLOY PREPLATED WITH 1.27μm[.000050] MINIMUM SATIN NICKEL WITH 2.03μm[.000080] MINIMUM TIN POST DIPPED ON PCB GROUND TABS.  
 LIGHT EMITTING DIODE (LED) - DIFFUSED EPOXY LENS, 0.51 x 0.51[.020 x .020] CARBON STEEL WIREFRAME LEADS - 8.89μm[.000350] THICK Sn/Cu OVER 2.03μm[.000080] THICK Ag OVER 1.02μm[.000040] THICK Cu OVER 3.56μm[.000140] THICK Ni OVER 1.02μm[.000040] THICK Cu UNDERPLATE
2. JACK CAVITY CONFORMS TO FCC RULES AND REGULATIONS PART 68, SUBPART F.
- 3 SUGGESTED PANEL OPENING DIMENSIONS.
- 4 SUGGESTED CLEARANCE BETWEEN TOP OF CONNECTOR AND TOP PANEL OPENING.
5. THIS MODULAR JACK WITH INTEGRATED LED IS NOT IR REFLOW SOLDERING PROCESS COMPATIBLE.
- 6 MANUFACTURING DATE CODE: LOCATED APPROX. AS SHOWN.  
 FIRST 2 DIGITS = LAST 2 DIGITS OF YEAR.  
 NEXT 2 DIGITS = MANUFACTURING WORK WEEK.  
 LAST DIGIT = DAY OF WEEK WITH SUNDAY = 1.



LED CURRENT DIAGRAM  
1888566-1

SUGGESTED PRINTED CIRCUIT BOARD LAYOUT  
(COMPONENT SIDE)

YELLOW	GREEN	1888566-2
YELLOW/GREEN	YELLOW/GREEN	1888566-1
POSITION 2	POSITION 1	PART NUMBER
INDICATOR COLOR		

THIS DRAWING IS A CONTROLLED DOCUMENT.		DWN: R. GRZYBOWSKI / L. A. MAYER 20JUNE2006		Tyco Electronics Corporation Harrisburg, Pa 17105-3608	
DIMENSIONS: mm [INCHES]		TOLERANCES UNLESS OTHERWISE SPECIFIED:		NAME: S. FLICKINGER 20JUNE2006	
0 PLC ± -		1 PLC ± -		PRODUCT SPEC: 108-1163-4	
1 PLC ± -		2 PLC ± 0.25[.01]		APPLICATION SPEC: 114-2154	
2 PLC ± -		3 PLC ± 0.13[.005]		SIZE: A1	
3 PLC ± -		4 PLC ± -		CAGE CODE: 00779	
4 PLC ± -		ANGLES ± -		DRAWING NO: 1888566	
FINISH SEE NOTE 1		FINISH SEE NOTE 1		RESTRICTED TO: -	
MATERIAL SEE NOTE 1		WEIGHT: -		CUSTOMER DRAWING: -	
		SCALE: 4:1		SHEET: 1 OF 1	
				REV: C1	