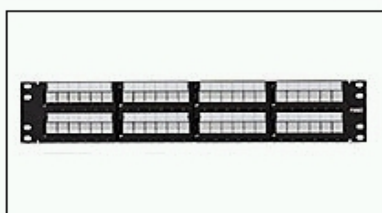



1933307-1 Product Details

[Share](#) [Print](#) [Email](#)


1933307-1

TE Internal Number: 1933307-1

 Active

 [View 3D PDF](#)

Copper Patch Panels

 [Always EU RoHS/ELV Compliant \(Statement of Compliance\)](#)

Product Highlights:

- Product Category = Multimedia SL Series Patch Panel
- Patch Panel
- Front Connector Interface = RJ21
- Accepts = SL Series Jacks, Inserts
- 24 Ports

[View all Features](#)

Quick Links

- ▶ [Check Pricing & Availability](#)
- ▶ [Search for Tooling](#)
- ▶ [Product Feature Selector](#)
- ▶ [Contact Us About This Product](#)

 [Add to My Part List](#)  [Request Sample](#)  [Find Similar Products](#)  [Buy Product](#)

Documentation & Additional Information

Product Drawings:

- [ASSY, SHIELDED HSG, 1U, 24P, MM, FLAT](#) (PDF, English)

Catalog Pages/Data Sheets:

- None Available

Product Specifications:

- None Available

Application Specifications:

- None Available

Instruction Sheets:

- None Available

CAD Files: ([CAD Format & Compression Information](#))

- [2D Drawing](#) (DXF, Version E)
- [3D Model](#) (IGES, Version E)
- [3D Model](#) (STEP, Version E)

Related Products:

- [Tooling](#)

[List all Documents](#)

Product Features (Please use the Product Drawing for all design activity)

Product Type Features:

- Product Category = Multimedia SL Series Patch Panel
- Product Type = Patch Panel
- Number of Ports = 24
- Footprint = Flat
- Industry Application = NETCONNECT
- Integrated Management = No

Electrical Characteristics:

- Shielded = Yes

Dimensions:

- Height (mm [in]) = 44.45 [1.750]

Body Features:

- Accepts = SL Series Jacks, Inserts
- Mount Style = 19" Rack
- Rack Mounted = Yes

Configuration Features:

- Front Connector Interface = RJ21
- Custom Configurable = Yes
- Rack Units = 1
- Connectivity Included = No

Industry Standards:

- [RoHS/ELV Compliance](#) = RoHS compliant, ELV compliant
- [Lead Free Solder Processes](#) = Not relevant for lead free process
- RoHS/ELV Compliance History = Always was RoHS compliant

Conditions for Usage:

- AMPTRAC Enabled = No

Other:

- Industry = Enterprise Network Solutions
- Brand = Tyco Electronics

Corporate Information

[Who We Are](#)
[Investors](#)
[News Room](#)
[Supplier Portal](#)
[Careers](#)

Quick Links

[Check Distributor Inventory](#)
[Cross Reference](#)
[Find Documents & Drawings](#)
[Product Compliance Support Center](#)
[Site Map](#)

Customer Support

[Email or Chat With Us](#)
[Find a Phone Number](#)
[Search Knowledge Base](#)
[Manage your Account](#)

Keep Me Informed

Receive TE News, Events & Technology Updates

Enter your email address

