



**Have a Question?**  
 Chat with a Product  
 Information Specialist

What can we help you find?

[Products](#) | 
 [Industries](#) | 
 [Resources](#) | 
 [About TE](#) | 
 [My Account](#) | 
 [Innovation](#) | 
 [Support Center](#)

## 193841-1 Product Details

[Share](#) | 
 [Print](#) | 
 [Email](#)



**193841-1**

TE Internal Number: 193841-1  
✔ Active

[View 3D PDF](#)

### .250" Centerline, 600 V, 19 - 36 A max

✔ Always EU RoHS/ELV Compliant (Statement of Compliance)

#### Product Highlights:

- Universal MATE-N-LOK II Product Line
- Wire-to-Wire
- Applies To Wire/Cable
- Contact
- Contact Type = Pin

[View all Features](#)

#### Quick Links

- ▶ [Pricing & Availability](#)
- ▶ [Search for Tooling](#)
- ▶ [View Housings \(15\)](#)
- ▶ [Product Feature Selector](#)
- ▶ [Contact Us About This Product](#)

[Add to My Part List](#) | 
 [Request Sample](#) | 
 [Find Similar Products](#) | 
 [Buy Product](#)

### Documentation & Additional Information

#### Product Drawings:

- [PIN, 2mm, 12-14 AWG HIGH CURRENT MATE-N-LOK II](#) (PDF, English)

#### Catalog Pages/Data Sheets:

- [SOFT\\_SHELL\\_PIN\\_SOCKET\\_CONNECTORS\\_STANDARD\\_DENSITY](#) (PDF, English)

#### Product Specifications:

- None Available

#### Application Specifications:

- [MATE-N-LOK II Connectors with High Current Contacts](#) (PDF, English)

#### Instruction Sheets:

- None Available

#### CAD Files: [\(CAD Format & Compression Information\)](#)

- [2D Drawing](#) (DXF, Version C1)
- [3D Model](#) (IGES, Version C1)
- [3D Model](#) (STEP, Version C1)

[List all Documents](#)

#### Additional Information:

- [Product Line Information](#)

#### Additional Product Images:

- [Product Photo](#)

#### Related Products:

- [Tooling](#)
- [Housings \(15\)](#)

### Product Features (Please use the Product Drawing for all design activity)

#### Product Type Features:

- Product Line = Universal MATE-N-LOK II
- Product Type = Contact
- Termination Method to Wire/Cable = Crimp
- Strain Relief = Without
- Sealed = No
- Wire/Cable Type = Discrete Wire
- UL File Number = E28476
- CSA File Number = LR 16455

#### Mechanical Attachment:

- Contact Retention = Without

#### Electrical Characteristics:

- Contact - Rated Current (A) = 32
- Operating Voltage Reference = AC
- Operating Voltage (VAC) = 600

#### Termination Features:

- Wire/Cable Size (mm<sup>2</sup>) = 2.08 - 3.31
- Wire/Cable Size (AWG) = 12 - 14

#### Body Features:

- Wire Type = Stranded
- Underplate Material Thickness (µm [µin]) = 1.02 - 2.03 [40.000 - 79.920]

#### Contact Features:

- Contact Type = Pin
- Contact Base Material = Copper Alloy
- Contact Plating, Mating Area, Material = Silver
- Multiple Contact Types = Without
- Contact Plating, Mating Area, Thickness (µm [µin]) = 5.08 - 10.16 [200 - 400]
- Underplate Material = Nickel

#### Industry Standards:

- Agency/Standard = CSA, UL
- [RoHS/ELV Compliance](#) = RoHS compliant, ELV compliant
- [Lead Free Solder Processes](#) = Not relevant for lead free process
- RoHS/ELV Compliance History = Always was RoHS compliant
- VDE Tested = Yes
- UL Rating = Recognized
- CSA Rating = Certified

#### Environmental:

- Operating Temperature (°C [°F]) = -55 - +105 [-67 - +221]

#### Conditions for Usage:

- Applies To = Wire/Cable
- Glow Wire Rating = Standard Part - Not Glow Wire
- For Use With = Mates with 193842-1

#### Operation/Application:

- Application Use = Wire-to-Wire

#### Packaging Features:

- Packaging Method = Bag
- Packaging Quantity = 600

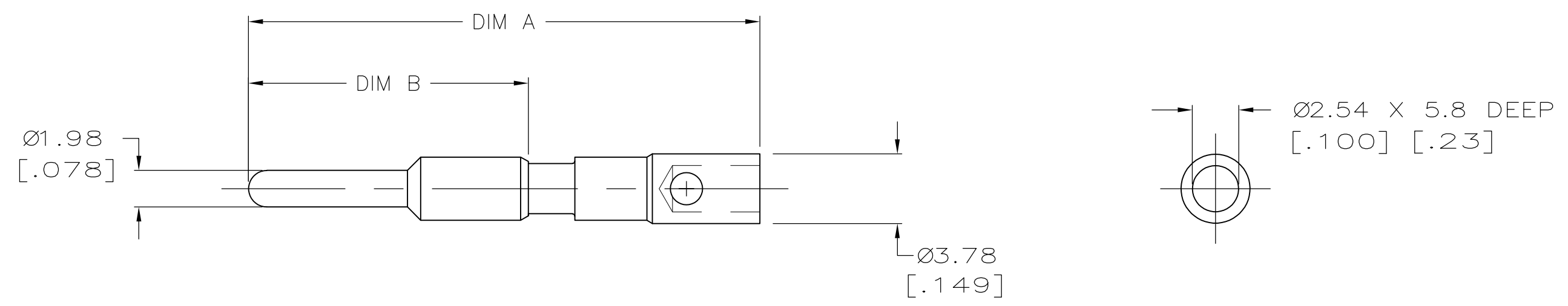
#### Other:

- Brand = AMP

THIS DRAWING IS UNPUBLISHED. RELEASED FOR PUBLICATION  
 © COPYRIGHT - By - ALL RIGHTS RESERVED.

LOC	DIST	REVISIONS			
P	LTR	DESCRIPTION	DATE	DWN	APVD
FT	0	C3	REVISED PER ECO-11-005027	11MAR11	RK HMR

- 1 MATERIAL:  
BODY: COPPER ALLOY
- 2 FINISH—BODY AND BAND, .0002 IN. SILVER.
- 3. WIRE BARREL WILL ACCEPT 12–14 AWG WIRE.
- 4. MATES WITH AMP PART NUMBER 193842–1.



.650	1.15	193841–2
.602	1.10	193841–1
DIM B	DIM A	PART NUMBER

THIS DRAWING IS A CONTROLLED DOCUMENT.		DWN	03-18-94		<b>STE</b> TE Connectivity
		CHK	CRAIG M. SVOBODA		
		APVD	-		
		PRODUCT SPEC	-		
DIMENSIONS: mm [INCHES]		TOLERANCES UNLESS OTHERWISE SPECIFIED:		NAME	
		0 PLC	± -	PIN, 2mm, 12–14 AWG HIGH CURRENT MATE–N–LOK II	
		1 PLC	± -		
		2 PLC	± 0.5[.02]		
		3 PLC	± 0.25[.010]		
		4 PLC	± -	SIZE	
		ANGLES	± -	CAGE CODE	
		FINISH	± -	DRAWING NO	
MATERIAL		-		A300779	
		- 1		C=193841	
		- 2		RESTRICTED TO	
				-	
CUSTOMER DRAWING			SCALE	SHEET	REV
			4:1	1 OF 1	C3