



Have a Question?
 Chat with a Product
 Information Specialist

What can we help you find?

[Products](#) |
 [Industries](#) |
 [Resources](#) |
 [About TE](#) |
 [My Account](#) |
 [Innovation](#) |
 [Support Center](#)

193990-2 Product Details

[Share](#) |
 [Print](#) |
 [Email](#)



193990-2

TE Internal Number: 193990-2

Active

View 3D PDF

Multimate

Always EU RoHS/ELV Compliant (Statement of Compliance)

Product Highlights:

- Contact Type = Socket
- Contact Classification = Power
- Type XII Series
- High Current
- Silver Contact Plating, Mating Area, Material

[View all Features](#)

Quick Links

- ▶ [Pricing & Availability](#)
- ▶ [Search for Tooling](#)
- ▶ [Product Feature Selector](#)
- ▶ [Contact Us About This Product](#)

[Add to My Part List](#) |
 [Request Sample](#) |
 [Find Similar Products](#) |
 [Buy Product](#)

Documentation & Additional Information

Product Drawings:

- [SOCKET ASSEMBLY, TYPE XII HIGH CURRENT #8 AWG \(PDF, English\)](#)

Catalog Pages/Data Sheets:

- [M_SERIES_PIN_AND_SOCKET_CONNECTORS \(PDF, English\)](#)

Product Specifications:

- None Available

Application Specifications:

- None Available

Instruction Sheets:

- None Available

CAD Files: (CAD Format & Compression Information)

- [2D Drawing \(DXF, Version D\)](#)
- [3D Model \(IGES, Version D\)](#)
- [3D Model \(STEP, Version D\)](#)

[List all Documents](#)

Additional Information:

- [Product Line Information](#)

Additional Product Images:

- [Product Photo](#)

Related Products:

- [Tooling](#)

Product Features (Please use the Product Drawing for all design activity)

Product Type Features:

- Series = Type XII
- Insulation Support = No
- Termination Method to Wire/Cable = Crimp
- Retention Clip = With
- Grade = Commercial

Electrical Characteristics:

- High Current = Yes

Body Features:

- Wire Range (mm [AWG]) = 8.00² [8]
- Louvertac Band Material = Copper Alloy
- Louvertac Band Plating = Silver
- Retention Clip Material = Stainless Steel
- Used With = G Series Connectors, CMPC (Circular Multipin Connector), CMC (Circular Metal Connector), M Series Connectors, CPC Connectors

Contact Features:

- Contact Type = Socket
- Contact Classification = Power
- Contact Plating, Mating Area, Material = Silver
- Contact Base Material = Copper Alloy
- Contact Size = 8

Industry Standards:

- [RoHS/ELV Compliance](#) = RoHS compliant, ELV compliant
- [Lead Free Solder Processes](#) = Not relevant for lead free process
- RoHS/ELV Compliance History = Always was RoHS compliant

Conditions for Usage:

- [Applies To](#) = Wire/Cable
- Test Current (A) = 60.0

Packaging Features:

- [Packaging Method](#) = Loose Piece/Bulk

Other:

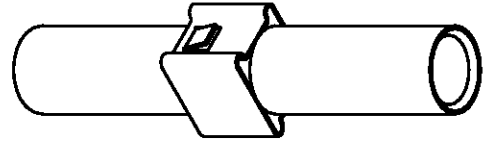
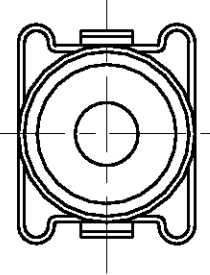
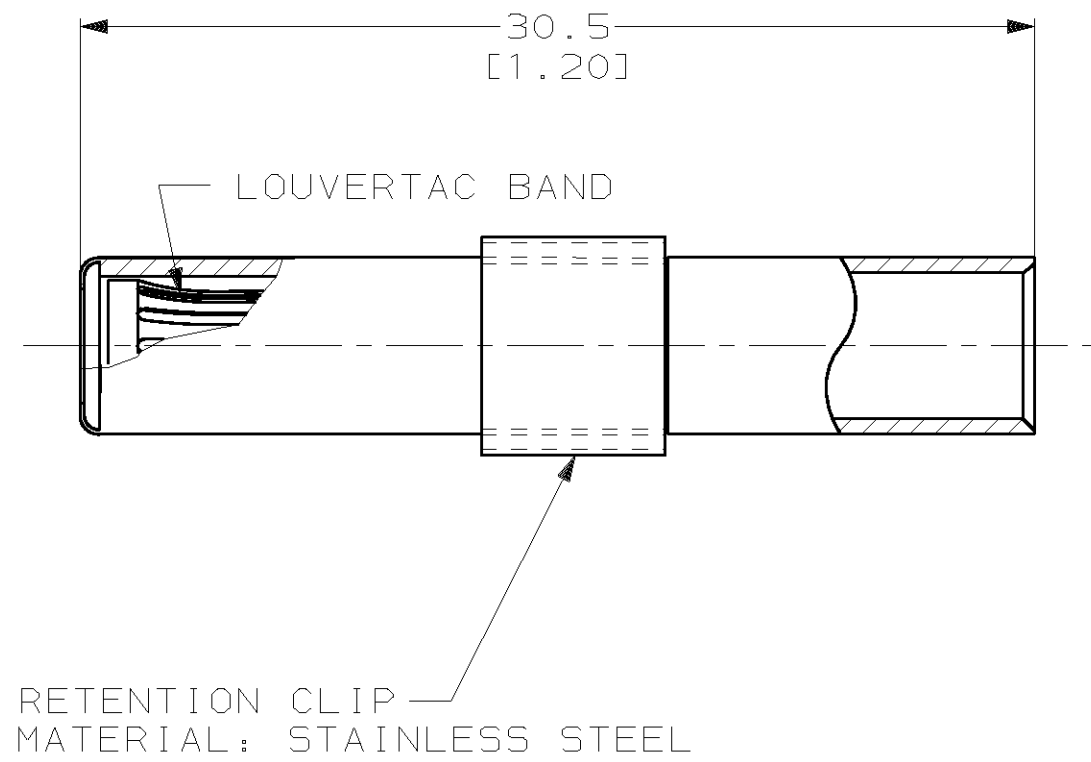
- Brand = AMP
- Comment = Mates with Part Number 193991-4.

THIS DRAWING IS UNPUBLISHED. RELEASED FOR PUBLICATION, 19 .
 © COPYRIGHT 19 BY AMP INCORPORATED. ALL INTERNATIONAL RIGHTS RESERVED.

LOC CH DIST 11 P F

REVISIONS				
ZONE	LTR	DESCRIPTION	DATE	APPD
	D	EC 0B20-0791-98	30/JUN/98	DAP
	C	EC 0B20-0671-98	27/MAY/98	RNP
	B	ECN 95013002	01-30-95	CMS

1. MATERIAL: COPPER ALLOY
2. FINISH: 30 MICROINCHES MIN. GOLD OVER 50 MICROINCHES MIN. NICKEL.
3. WIRE BARREL WILL ACCEPT #8 AWG WIRE
4. MATES WITH AMP P/N 193991-X.
5. FINISH: 200 MICROINCHES MIN. SILVER OVER 40 MICROINCHES MIN. NICKEL.
6. ALL DIMENSIONS ARE REFERENCE ONLY.



OBSOLETE

5	193990-2
2	193990-1
FINISH	PART NO

DO NOT SCALE PRINT. UNLESS SPECIFIED DIMENSIONS IN mm [INCHES] TOLERANCES ON: 2 PLC DEC ± - 3 PLC DEC ± - ANGLES ± -		DR 04-13-94 D.A.P.	AMP AMP Incorporated Harrisburg, PA 17105-3608	
MATERIAL 1		CHK -		
FINISH 2 5		APPD -	SIZE B	CAGE CODE 00779
		APPD -	DRAWING NO C-193990	
		PRODUCT SPEC -	SCALE	SHEET 1 OF 1
		APPLICATION SPEC -		
		WEIGHT -		

THIS DRAWING IS A CONTROLLED DOCUMENT FOR AMP INCORPORATED. IT IS SUBJECT TO CHANGE AND THE CONTROLLING ENGINEERING ORGANIZATION SHOULD BE CONTACTED FOR THE LATEST REVISION.