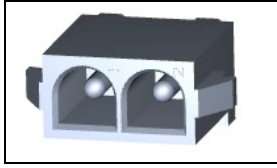


194009-1 Product Details



194009-1

TE Internal Number: 194009-1



.250" Centerline, 600 V, 19 - 36 A max



Product Highlights:

- Universal MATE-N-LOK II Product Line
- Wire-to-Board
- Applies To Printed Circuit Board
- Connector
- Header

Documentation & Additional Information

Product Drawings:

- [HIGH CURRENT VERT. PIN HEADER ASSY, MATE-N-LOK 11, 2...](#) (PDF, English)

Catalog Pages/Data Sheets:

- [SOFT_SHELL_PIN_SOCKET_CONNECTORS_STANDARD_DENSITY](#) (PDF, English)

Product Specifications:

- None Available

Application Specifications:

- None Available

Instruction Sheets:

- None Available

CAD Files: ([CAD Format & Compression Information](#))

- [2D Drawing](#) (DXF, Version D)
- [3D Model](#) (IGES, Version D)
- [3D Model](#) (STEP, Version D)

Additional Information:

- [Product Line Information](#)

Related Products:

- [Tooling](#)

Product Features (Please use the Product Drawing for all design activity)

Product Type Features:

- Product Line = Universal MATE-N-LOK II
- Product Type = Connector
- Connector Type = Header
- Termination Method to Wire/Cable = Solder
- PCB Mounting Orientation = Vertical
- PCB Mount Retention = Without
- PCB Mount Alignment = With
- Strain Relief = Without
- Sealed = No
- Termination Method to PC Board = Through Hole - Solder
- PCB Mount Alignment Type = Standard Polarized Tail
- UL File Number = E28476
- CSA File Number = LR 16455

Mechanical Attachment:

- Contact Retention = Without
- Mating Retention Type = Locking Tab

Electrical Characteristics:

- Contact - Rated Current (A) = 36
- Operating Voltage Reference = AC
- Operating Voltage (VAC) = 600

Termination Features:

- Tail Length (mm [in]) = 3.68 [0.145]

Dimensions:

- PCB Thickness, Recommended (mm [in]) = 1.57 [0.062]

Body Features:

- Mating Retention = With
- Underplate Material Thickness (μm [μin]) = 1.02 [40.000]
- Assembly Integration Feature = Without

Contact Features:

Housing Features:

- Connector Style = Plug
- Centerline (mm [in]) = 6.35 [0.2499]
- Housing Material = Nylon
- Housing Color = White
- UL Flammability Rating = UL 94V-0
- Mating Alignment = With
- Mating Alignment Type = Polarization

Configuration Features:

- Number of Positions = 2
- Number of Rows = 1

Industry Standards:

- Agency/Standard = UL, CSA
- [RoHS/ELV Compliance](#) = RoHS compliant, ELV compliant
- [Lead Free Solder Processes](#) = Wave solder capable to 240°C, Wave solder capable to 260°C, Wave solder capable to 265°C
- RoHS/ELV Compliance History = Always was RoHS compliant
- VDE Tested = Yes
- UL Rating = Recognized
- CSA Rating = Certified

Environmental:

- Operating Temperature ($^{\circ}\text{C}$ [$^{\circ}\text{F}$]) = -55 - +105 [-67 - +221]

Conditions for Usage:

- Applies To = Printed Circuit Board
- Glow Wire Rating = Standard Part - Not Glow Wire
- For Use With = Plug with High Current Socket Contacts

Operation/Application:

- Application Use = Wire-to-Board
- Contact Transmits (Typical Application) = Power

Packaging Features:

- Contact Type = Pin
- Contact Style = Straight
- Contact Layout = In-Line
- Contact Base Material = Copper Alloy
- Contact Plating, Mating Area, Material = Silver
- Tail Plating Material = Silver
- Multiple Contact Types = Without
- Contact Plating, Mating Area, Thickness (μm [μin]) = 5.08 [200]
- Tail Plating Thickness (μm [μin]) = 5.08 [200]
- Underplate Material = Nickel

- Packaging Method = Bag
- Packaging Quantity = 100

Other:

- Brand = AMP

THIS DRAWING IS UNPUBLISHED.

RELEASED FOR PUBLICATION

© COPYRIGHT - By -

ALL RIGHTS RESERVED.

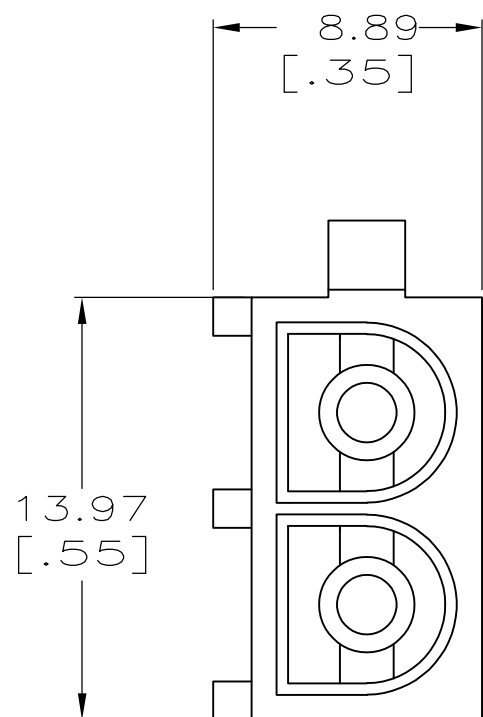
LOC FT DIST 0

REVISIONS

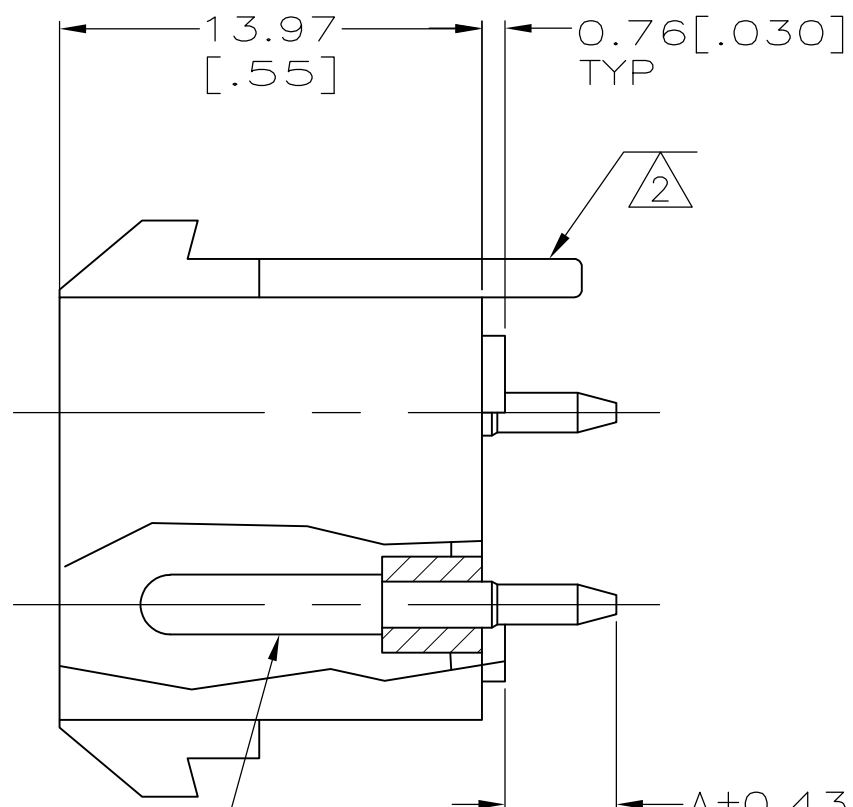
P	LTR	DESCRIPTION	DATE	DWN	APVD
	H3	REVISED PER ECO-11-004917	11MAR11	RK	HMR

1 PRELIMINARY PART NUMBER.

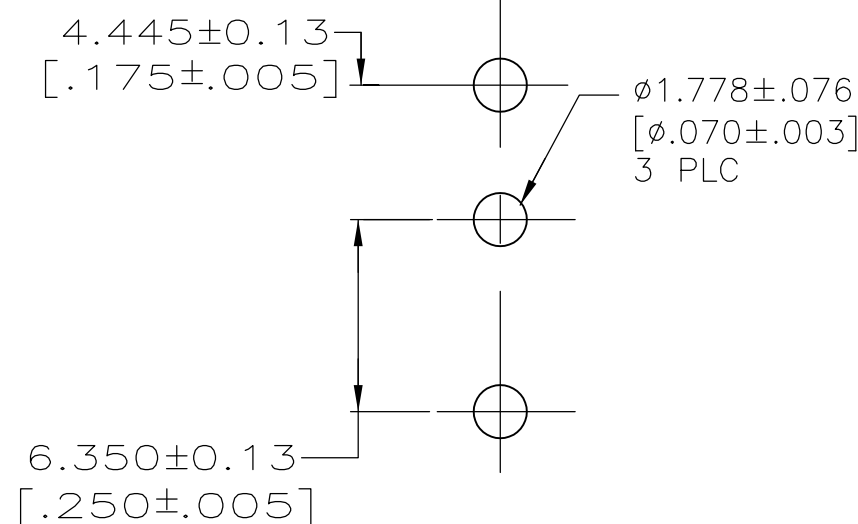
2 NO LOCATION TAB.



HOUSING MATERIAL: NYLON 94V-0



CONTACT MATERIAL: COPPER ALLOY
 FINISH: 5 um [200uIN] MIN SILVER
 OVER 1um [40uIN] MIN NICKEL (-1 & -2).
 30 uIN MIN GOLD OVER 50 uIN MIN NICKEL. (-3).



RECOMMENDED LAYOUT FOR 1.57 [.062] THICK P.C. BOARD

2	3.68 [.145]	194009-4
1	3.68 [.145]	194009-3
1	7.62 [.300]	194009-2
	3.68 [.145]	194009-1
	DIM A	PART NUMBER

THIS DRAWING IS A CONTROLLED DOCUMENT.		DWN R.N. POLK 03NOV94	STE TE Connectivity				
DIMENSIONS: mm		CHK G.STEINHAUER 03NOV94					
TOLERANCES UNLESS OTHERWISE SPECIFIED:		APVD G.STEINHAUER 03NOV94	NAME HIGH CURRENT VERT. PIN HEADER ASSY, MATE-N-LOK 11, 2 CIRCUIT				
0 PLC ± - 1 PLC ± - 2 PLC ± 0.25[.01] 3 PLC ± - 4 PLC ± - ANGLES ± -		PRODUCT SPEC -	APPLICATION SPEC -				
MATERIAL -		FINISH -	WEIGHT -	SIZE A3	CAGE CODE 00779	DRAWING NO C-194009	RESTRICTED TO -
CUSTOMER DRAWING			SCALE 4:1	SHEET 1 OF 1	REV H3		