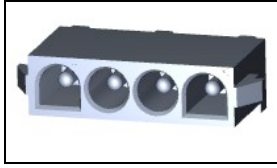


194010-1 Product Details



194010-1

TE Internal Number: 194010-1



.250" Centerline, 600 V, 19 - 36 A max



Product Highlights:

- Universal MATE-N-LOK II Product Line
- Wire-to-Board
- Applies To Printed Circuit Board
- Connector
- Header

Documentation & Additional Information

Product Drawings:

- [HIGH CURRENT VERT. PIN HEADER ASSY, MATE-NLOK II, 4 ...](#) (PDF, English)

Catalog Pages/Data Sheets:

- [SOFT_SHELL_PIN_SOCKET_CONNECTORS_STANDARD_DENSITY](#) (PDF, English)

Product Specifications:

- None Available

Application Specifications:

- None Available

Instruction Sheets:

- None Available

CAD Files: ([CAD Format & Compression Information](#))

- [2D Drawing](#) (DXF, Version F)
- [3D Model](#) (IGES, Version F)
- [3D Model](#) (STEP, Version F)

Additional Information:

- [Product Line Information](#)

Related Products:

- [Tooling](#)

Product Features (Please use the Product Drawing for all design activity)

Product Type Features:

- Product Line = Universal MATE-N-LOK II
- Product Type = Connector
- Connector Type = Header
- Termination Method to Wire/Cable = Solder
- PCB Mounting Orientation = Vertical
- PCB Mount Retention = Without
- PCB Mount Alignment = With
- Strain Relief = Without
- Sealed = No
- Termination Method to PC Board = Through Hole - Solder
- PCB Mount Alignment Type = Standard Polarized Tail
- UL File Number = E28476
- CSA File Number = LR 16455

Mechanical Attachment:

- Contact Retention = Without
- Mating Retention Type = Locking Tab

Electrical Characteristics:

- Contact - Rated Current (A) = 36
- Operating Voltage Reference = AC
- Operating Voltage (VAC) = 600

Termination Features:

- Tail Length (mm [in]) = 3.68 [0.145]

Dimensions:

- PCB Thickness, Recommended (mm [in]) = 1.57 [0.062]

Body Features:

- Mating Retention = With
- Underplate Material Thickness (μm [μin]) = 1.02 [40.000]
- Assembly Integration Feature = Without

Contact Features:

Housing Features:

- Connector Style = Plug
- Centerline (mm [in]) = 6.35 [0.2499]
- Housing Material = Nylon
- Housing Color = White
- UL Flammability Rating = UL 94V-0
- Mating Alignment = With
- Mating Alignment Type = Polarization

Configuration Features:

- Number of Positions = 4
- Number of Rows = 1

Industry Standards:

- Agency/Standard = CSA, UL
- [RoHS/ELV Compliance](#) = RoHS compliant, ELV compliant
- [Lead Free Solder Processes](#) = Wave solder capable to 240°C, Wave solder capable to 260°C, Wave solder capable to 265°C
- RoHS/ELV Compliance History = Always was RoHS compliant
- VDE Tested = Yes
- UL Rating = Recognized
- CSA Rating = Certified

Environmental:

- Operating Temperature ($^{\circ}\text{C}$ [$^{\circ}\text{F}$]) = -55 - +105 [-67 - +221]

Conditions for Usage:

- Applies To = Printed Circuit Board
- Glow Wire Rating = Standard Part - Not Glow Wire
- For Use With = Plug with High Current Socket Contacts

Operation/Application:

- Application Use = Wire-to-Board
- Contact Transmits (Typical Application) = Power

Packaging Features:

- Contact Type = Pin
- Contact Style = Straight
- Contact Layout = In-Line
- Contact Base Material = Copper Alloy
- Contact Plating, Mating Area, Material = Silver
- Tail Plating Material = Silver
- Multiple Contact Types = Without
- Contact Plating, Mating Area, Thickness (μm [μin]) = 5.08 [200]
- Tail Plating Thickness (μm [μin]) = 5.08 [200]
- Underplate Material = Nickel

- Packaging Method = Bag
- Packaging Quantity = 50

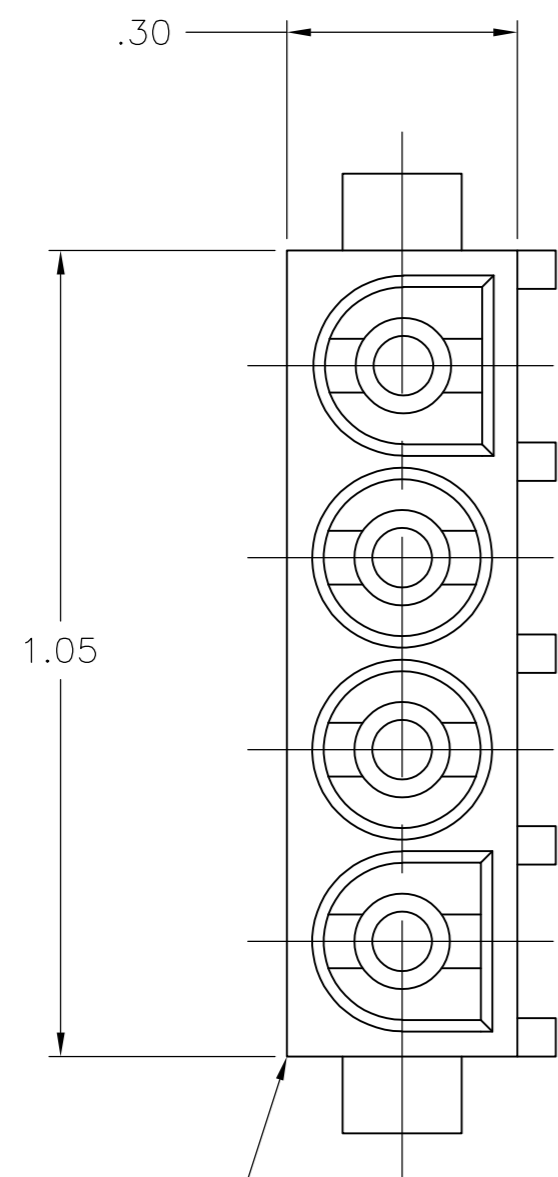
Other:

- Brand = AMP
- Comment = Using 193797-1 Socket contacts

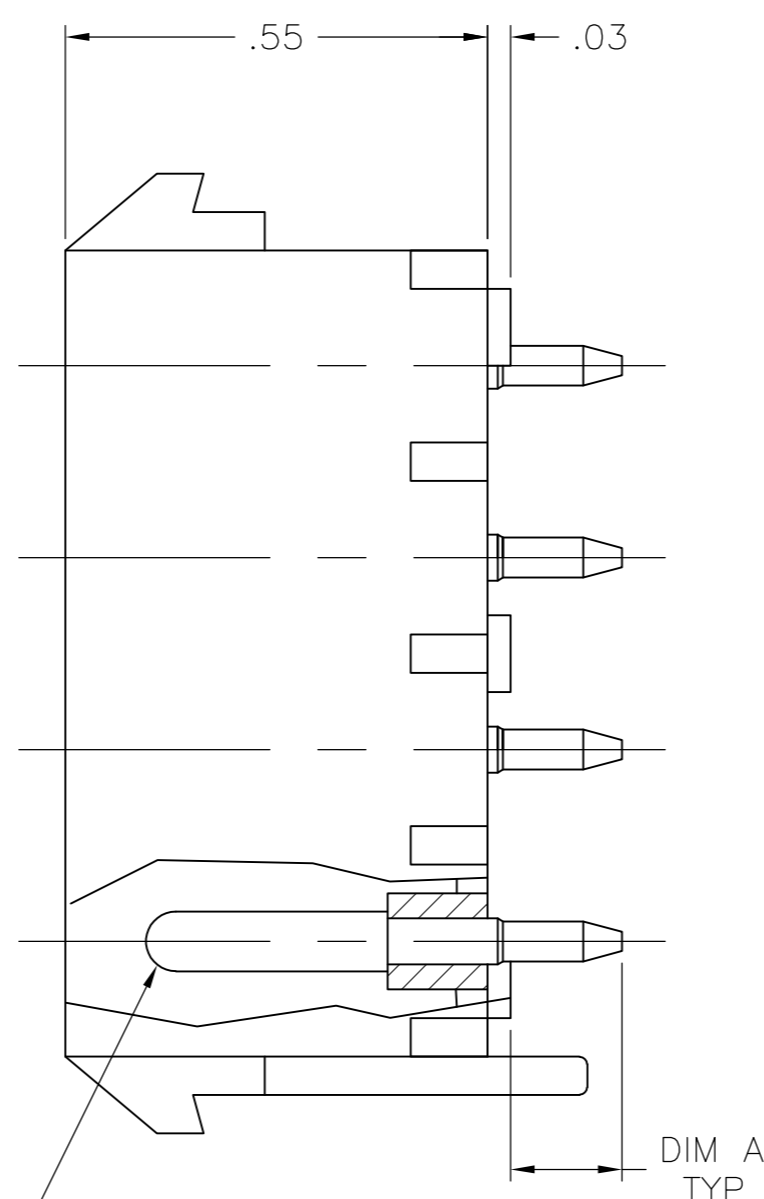
THIS DRAWING IS UNPUBLISHED. RELEASED FOR PUBLICATION
 © COPYRIGHT - By - ALL RIGHTS RESERVED.

LOC		DIST		REVISIONS			
P	LTR	DESCRIPTION	DATE	DWN	APVD		
FT	0	F1	REVISED PER ECO-11-005027	11MAR11	RK	HMR	

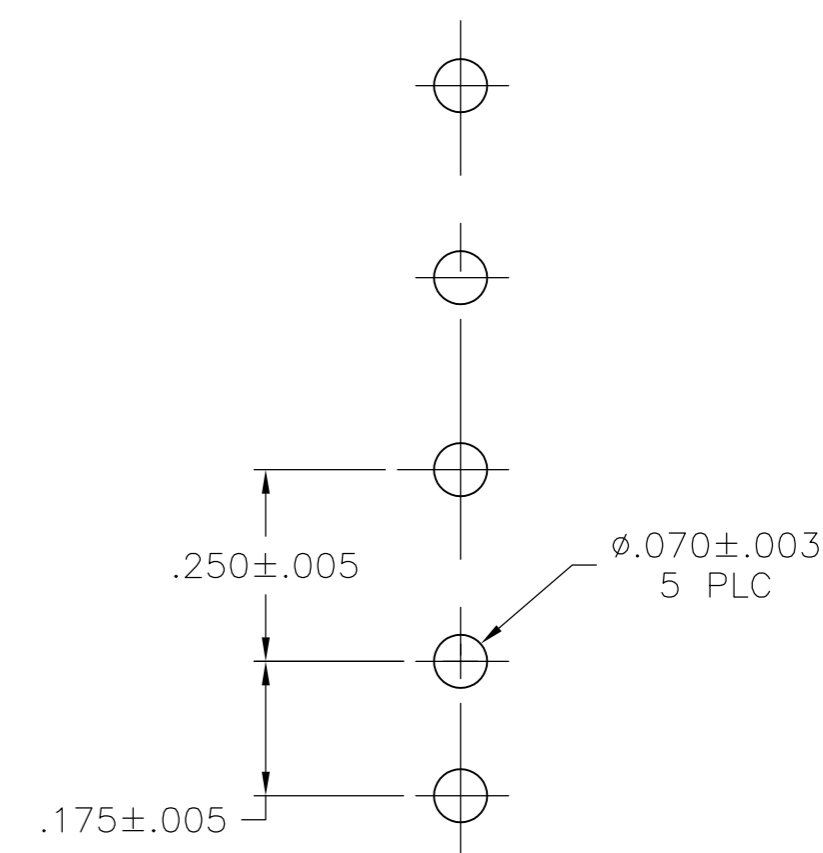
- MATES WITH MATE-N-LOK II PLUG CONNECTOR USING P/N 193797-1 SOCKET CONTACTS.
- ALL DIMENSIONS ARE REFERENCE ONLY EXCEPT P.C. LAYOUT.



HOUSING MATERIAL:
 NYLON 94V-0



CONTACT MATERIAL:
 COPPER ALLOY
 FINISH: 200 uIN MIN SILVER
 OVER 40 uIN MIN NICKEL



RECOMMENDED LAYOUT FOR
 1.57 [.062] THICK P.C. BOARD

.145	GREEN	194010-3
.275	WHITE	194010-2
.145	WHITE	194010-1
DIM A	COLOR	PART NO.

THIS DRAWING IS A CONTROLLED DOCUMENT.		DWN	CMS	26/SEP/94	TE TE Connectivity		
DIMENSIONS: INCHES		CHK	-	26/SEP/94			
TOLERANCES UNLESS OTHERWISE SPECIFIED:		APVD	-	26/SEP/94	NAME		
0 PLC ± -		PRODUCT SPEC		HIGH CURRENT VERT. PIN HEADER ASSY, MATE-NLOK II, 4 CIRCUIT			
1 PLC ± -		APPLICATION SPEC		-			
2 PLC ± -		MATERIAL		SIZE	CAGE CODE	DRAWING NO	RESTRICTED TO
3 PLC ± -		FINISH		A2	00779	C=194010	-
4 PLC ± -		MATERIAL		CUSTOMER DRAWING		SCALE	SHEET
ANGLES ± -		MATERIAL		CUSTOMER DRAWING		NTS	1 of 1
FINISH		MATERIAL		CUSTOMER DRAWING		REV	F1